



# SERVICE PARTS LIST

**BUL.54-44-0200**

## 14 GA. SHEAR

REVISED BUL

DATE

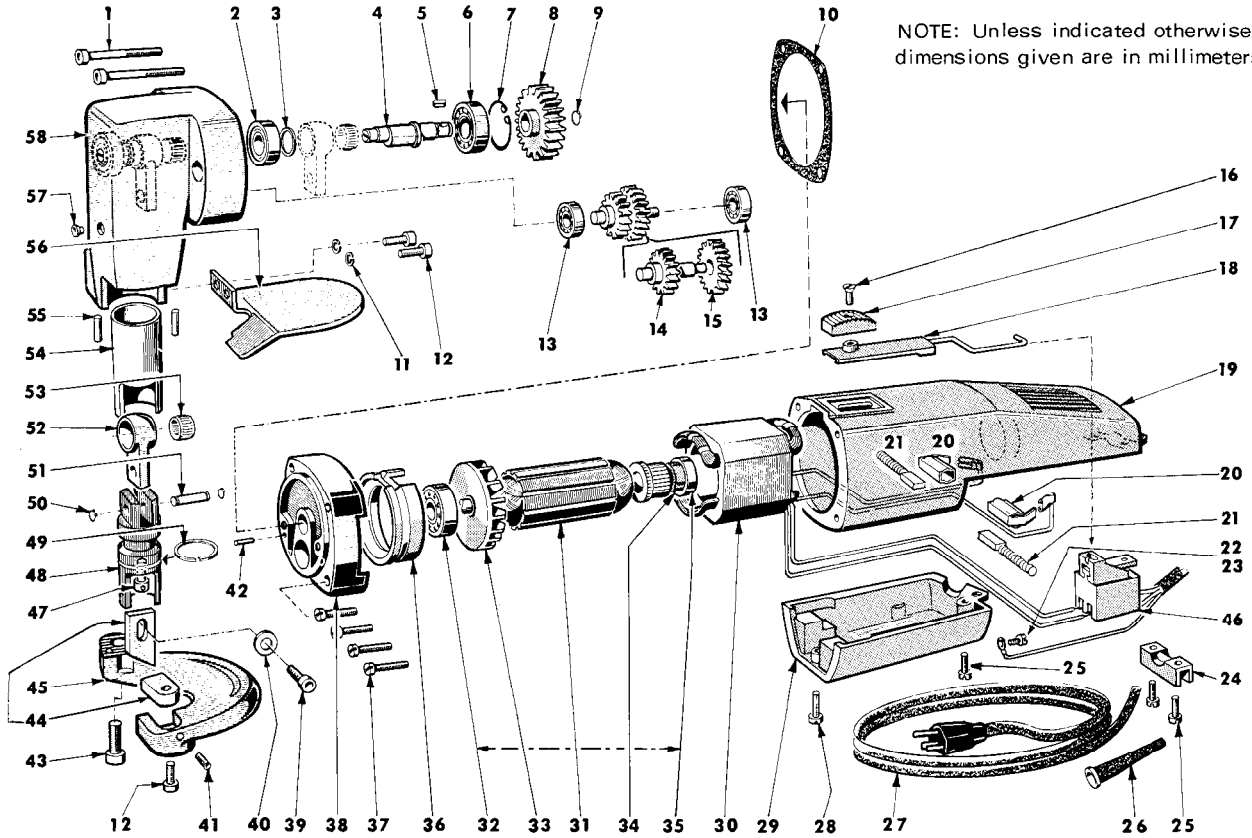
July '72

**Catalog No. 6810**

Starting Serial No. **444-1001**

WIRING INSTR. **58-01-0670**

Both Model and Serial No. must be furnished to obtain correct parts.



NOTE: Unless indicated otherwise, dimensions given are in millimeters

FIG.	PART NO.	DESCRIPTION OF PART	NO. REQ.	FIG.	PART NO.	DESCRIPTION OF PART	NO. REQ.
1	05-74-0530	Socket Hd. Screw 5x30	2	34	31-86-0130	Insulating Disc	1
2	02-04-0906	Ball Bearing	1	35	02-04-0650	Ball Bearing	1
3	44-90-4235	Clamping Ring	1	36	31-05-0020	Air Baffle Ring	1
4	43-16-0075	Eccentric Shaft	1	37	05-81-0320	Pan Hd. Screw	4
5	43-96-0090	Key	1	38	28-28-1455	Diaphragm	1
6	02-04-1020	Ball Bearing	1	39	05-84-0512	Socket Hd. Screw 5x12	1
7	34-80-1525	Retaining Ring	1	40	45-88-7240	Washer	1
8	32-48-0010	Mechanism Gear	1	41	05-86-0510	Set Screw 5x10	1
9	34-60-0815	Retaining Ring	1	42	44-60-0425	Cylindrical Pin	1
10	43-44-0400	Diaphragm Gasket	1	43	05-84-1030	Allen Screw 10x30	1
11	05-90-0105	Lock Washer 5	2	44	48-44-0080	Shear Blade Set	1
12	05-84-0510	Allen Screw 5x10	3	45	45-98-0110	Yoke	1
13	02-04-0500	Ball Bearing	2	46	23-66-0895	Switch	1
14	32-40-1620	Small Intermediate Gear	1	47	45-04-0430	Blade Adjustment Screw	1
15	32-40-1625	Large Intermediate Gear	1	48	44-62-0110	Piston	1
16	05-80-0404	Flat Hd. Screw	1	49	44-90-4215	Piston Ring	1
17	31-92-0010	Trigger	1	50	34-60-0820	Retaining Ring	2
18	44-10-0010	Trigger Lever	1	51	44-60-0385	Piston Pin	1
19	31-50-0010	Motor Housing	1	52	44-94-0195	Connecting Rod	1
20	22-20-0255	Brush Holder	2	53	02-50-2500	Needle Bearing	1
21	22-18-0480	Carbon Brush Assembly	2	54	45-22-0315	Sleeve	1
22	05-89-0025	Pan Hd. Ground Screw 3.5x6	1	55	44-60-0390	Cylindrical Pin	2
23	06-97-1800	Lock Washer	1	56	43-56-0195	Scrap Guide	1
24	31-17-0055	Cord Clamp	1	57	43-33-0100	Grease Nipple	1
25	05-81-0412	Pan Hd. Screw 4x12	3	58	28-14-1340	Gear Case	1
26	23-82-0260	Cord Entry Sleeve	1				
27	22-64-0710	Cord Set	1			NOT SHOWN	
28	05-81-0415	Pan Hd. Screw 4 x 15	1	49-11-0060	Feeler Gauge		
29	31-15-0070	Handle Cover	1	49-80-0010	Blade Adjusting Screw Tool		
30	18-12-0010	110 Volt Field	1	49-11-0065	Cutting Angle Gauge		
31	16-12-0010	110 Volt Armature (Includes Figs. 32 thru 35)	1	49-96-0310	Socket Wrench Set		
32	02-04-0825	Ball Bearing	1	12-98-7090	Nameplate		
33	-	Fan	1	12-98-7080	Warning Plate		
				12-98-7085	Instruction Plate		