



SERVICE PARTS LIST

BULLETIN NO.
54-42-5506

SPECIFY CATALOG NO. AND SERIAL NO. WHEN ORDERING PARTS		REVISED BULLETIN 54-42-5505	DATE Nov. '86
POSITIVE CLUTCH REV. SCREWDRIVER			
CATALOG NO. 6798-1	STARTING SERIAL NO. 450-187100	WIRING INSTRUCTION 58-01-0015	

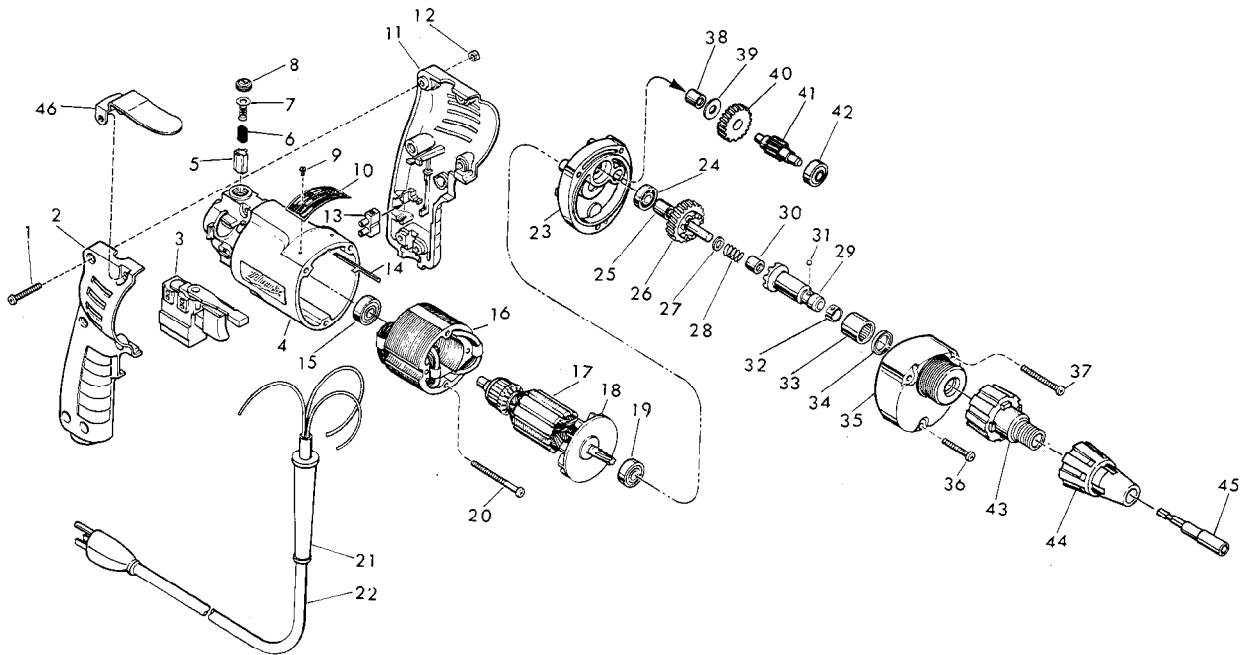


FIG. PART NO.	DESCRIPTION OF PART	NO. REQ;	FIG. PART NO.	DESCRIPTION OF PART	NO. REQ.
1 06-81-0473	8-32 x 1" Pan Hd. Pozi Dr. Screw	(6)	32 40-50-0510	Bit Retaining Spring	(1)
2 31-44-1130	Right Handle Half	(1)	33 02-50-4220	Needle Roller Bearing	(1)
3 23-66-1245	Speed Control Switch	(1)	34 45-06-0106	Oil Seal	(1)
4 31-50-0345	Motor Housing	(1)	35 14-30-0600	Gear Case Assembly	(1)
5 22-20-0530	Brush Tube	(2)	36 06-95-0175	7-18 x 1-1/2" Pan Hd. Pozi Driv Screw	(1)
6 22-16-0275	Carbon Brush	(2)	37 06-95-0155	7-18 x 2-1/2" Pan Hd. Pozi Dr. Screw	(2)
7 23-52-0210	Brush Spring Assembly	(2)	38 02-50-2410	Needle Bearing	(1)
8 23-44-0120	Brush Retaining Screw	(2)	39 45-88-7990	Thrust Washer	(1)
9 06-85-0200	Nameplate Screw	(2)	40 32-40-1612	Intermediate Gear	(1)
10 12-99-0445	Nameplate Blank	(1)	41 36-66-4101	Intermediate Pinion Shaft	(1)
11 31-44-1140	Left Handle Half	(1)	42 02-04-0640	Ball Bearing	(1)
12 06-55-0835	8-32 Hex Nut	(6)	43 48-32-2500	Bit Housing	(1)
13 22-56-0455	Terminal Block	(1)	44 49-26-0250	Locator Assembly - 1/4" Hex Socket	(1)
14 44-60-0530	Ground Pin	(1)	49-26-0312	Locator Assembly - 5/16" Hex Socket	(1)
15 02-04-0645	Ball Bearing	(1)	49-26-0375	Locator Assembly - 3/8" Hex Socket	(1)
16 18-10-0130	120V Field	(1)	45 49-66-3016	5/16" Hex Socket	(1)
17 16-10-0591	120V Armature (Includes Fig. No. 18)	(1)	46 48-67-0101	Belt Clip	(1)
18 22-84-0440	Fan Assembly	(1)			
19 02-04-0848	Ball Bearing	(1)			
20 06-95-0180	7-18 x 2" Pan Hd. Plastite Screw	(2)			
21 44-76-0130	Cord Protector	(1)			
22 22-64-1120	Cord Set	(1)			
23 28-28-1800	Diaphragm	(1)			
24 02-04-0645	Ball Bearing	(1)			
25 45-36-1280	Spacer	(1)			
26 32-10-4045	Clutch Gear Assembly	(1)			
27 45-88-0712	Thrust Washer	(1)			
28 40-50-6600	Separator Spring	(1)			
29 42-66-0766	Clutch Chuck Assy. (Incl. Fig. Nos. 30 Thru 32)	(1)			
30 02-50-2400	Needle Bearing	(1)			
31 02-02-0130	Steel Ball	(1)			

NOTES:

Screws Fig. No. 1, Fig. No. 20 & Fig. Nos. 36 & 37 Should Be Torqued To 15-20 Lbs.

LUBRICATION

Use 1-1/2 Oz. Of Type "E" Grease In Gear Case