



SERVICE PARTS LIST

MAGNUM SCREW-SHOOTER

Catalog No. **6794-1**

Starting Serial No. **547-1001**

Specify Catalog and Serial No. when ordering parts

BUL. 54-42-5425

REVISED BUL. DATE
May '78

WIRING INSTRUCTIONS
58-01-0120

0-2500 R.P.M.
4.5 AMPS

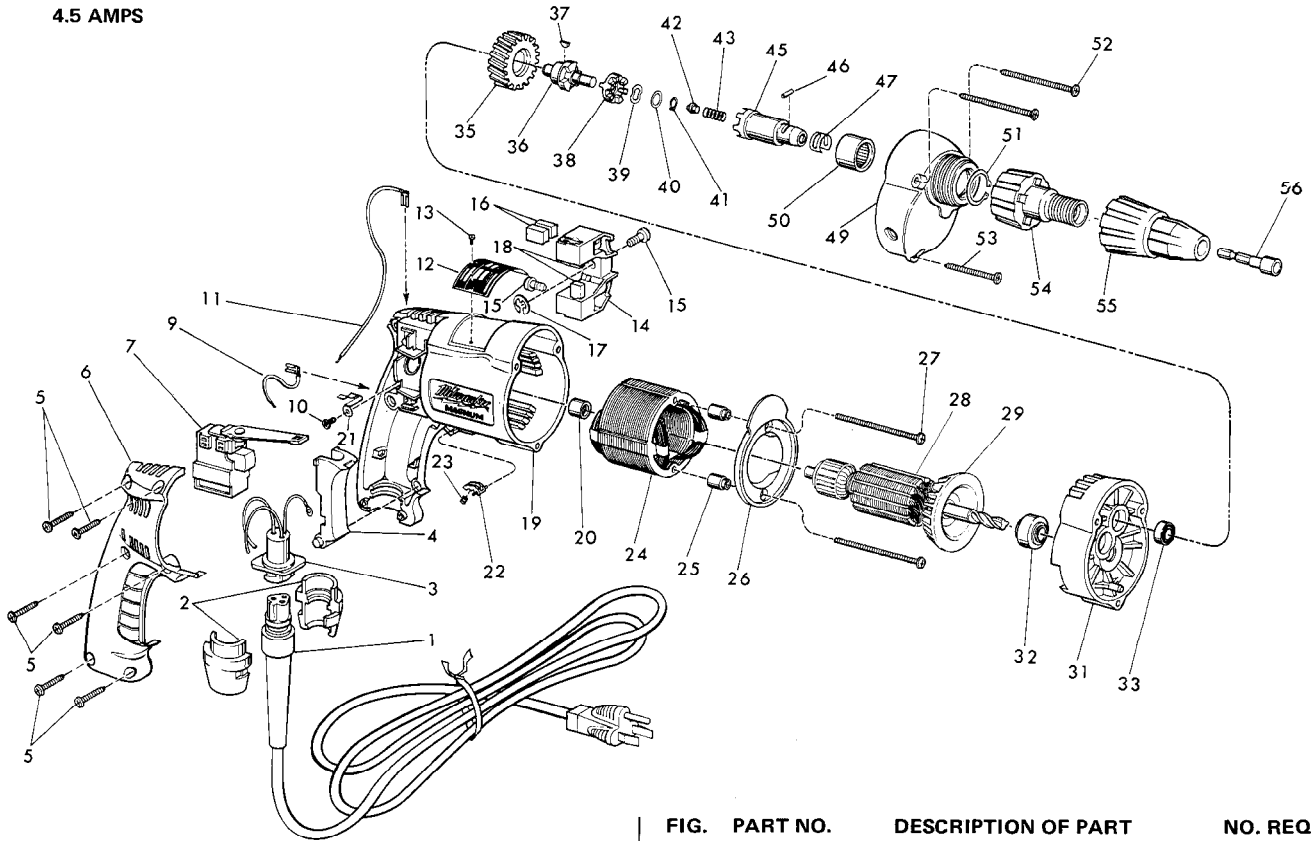


FIG.	PART NO.	DESCRIPTION OF PART	NO. REQ.
1	48-76-3008	Cord Set (Includes Fig. No. 2)	(1)
2	44-40-0440	Cord Nut	(2)
3	22-56-0300	Pin Housing Assembly	(1)
4	45-72-0080	Trigger	(1)
5	06-95-0220	8-18x3/4 Pan Hd. Thread Form Screw	(6)
6	31-15-0100	Handle Cover	(1)
7	23-66-0980	Reversing Speed Control Switch	(1)
8	12-98-7081	Caution Plate (Not Shown)	(1)
9	23-94-9625	2-1/4" Lead Assembly	(1)
10	06-95-5100	6-32x1/4 Phillip Pan Hd. Screw	(1)
11	23-94-9630	7" Lead Assembly	(1)
12	12-99-0080	Nameplate Blank	(1)
13	06-85-0200	Nameplate Screw	(2)
14	22-22-0350	Brush Holder Assy. (Incl. Fig. Nos. 15 thru 17)	(1)
15	31-75-0010	Brush Holder Screw	(2)
16	22-16-0270	Carbon Brush (Spares)	(2)
17	34-60-0500	1/4" Ext. Retaining Ring	(1)
18	22-16-0270	Carbon Brush	(2)
19	14-38-0300	Motor Housing Assy. (Incl. Fig. Nos. 20 & 21)	(1)
20	02-50-2025	Needle Thrust Bearing	(1)
21	23-74-0530	Ground Terminal	(1)
22	42-42-0150	Lock Button	(1)
23	40-50-0085	Lock Button Spring	(1)
24	18-10-0040	120 Volt Field	(1)
25	45-36-0810	Baffle Spacer	(2)
26	31-05-0060	Baffle	(1)
27	06-95-0280	8-18x2-3/8 Pan Hd. Thread Form Screw	(2)
28	16-10-0205	120 Volt Armature (Incl. fig. No. 29)	(1)

FIG.	PART NO.	DESCRIPTION OF PART	NO. REQ.
29	22-84-0650	Fan Assembly	(1)
30	14-13-0310	Diaphragm Assy. (Fig. Nos. 31 thru 33)	(1)
31	31-20-0035	Diaphragm	(1)
32	02-04-0885	Ball Bearing	(1)
33	02-08-0215	Ball Bearing	(1)
34	32-10-0150	Clutch Gear Assy. (Fig. Nos. 35 thru 41)	(1)
35	32-75-2750	Spindle Gear	(1)
36	36-14-0081	Gear Shaft	(1)
37	06-42-0400	Woodruff Key	(1)
38	42-70-5030	Drive Clutch	(1)
39	45-88-0700	Shakeproof Spring Washer	(1)
40	45-88-5240	Flat Washer	(1)
41	34-60-0510	External Retaining Ring	(1)
42	44-60-0500	Thrust Pin	(1)
43	40-50-0080	Separator Spring	(1)
44	14-73-0090	Chuck Shaft Assy. (Fig. Nos. 45 thru 47)	(1)
45	42-66-0510	Chuck Shaft	(1)
46	02-55-0150	Loose Roller Bearing	(1)
47	40-50-1450	Bit Retaining Spring	(1)
48	14-30-0030	Gear Case Assy. (Fig. Nos. 49 & 51)	(1)
49	31-40-0035	Gear Case	(1)
50	02-50-4050	Needle Bearing	(1)
51	34-80-0800	Internal Retaining Ring	(1)
52	06-95-0270	8-18x2-1/8 Pan Hd. Thread Form Screw	(2)
53	06-95-0250	8-18x1-5/8 Pan Hd. Thread Form Screw	(1)
54	48-32-2505	Bit Housing	(1)
55	49-26-0250	Locator 1/4" Hex Socket	(1)
	49-26-0312	Locator 5/16" Hex Socket	(1)
	49-26-0375	Locator 3/8" Hex Socket	(1)
	49-26-0600	Loactor 7/16" Hex Socket	(1)
56	49-66-3016	5/16" Socket Extension - Magnetic	(1)