



SERVICE PARTS LIST

BULLETIN NO.
54-42-0353

SPECIFY CATALOG NO. AND SERIAL NO. WHEN ORDERING PARTS		REVISED BULLETIN 54-42-0352	DATE April '85
T.S.C. ADJUSTABLE CLUTCH REV. SCREW DRIVER			
CATALOG NO. 6783-1	STARTING SERIAL NO. 471-20000	WIRING INSTRUCTION 58-01-0653	
CAT. NO. 6783-6	START SER. NO. 471-20000	BILINGUAL LABEL 10-98-6405	

SEE REVERSE SIDE

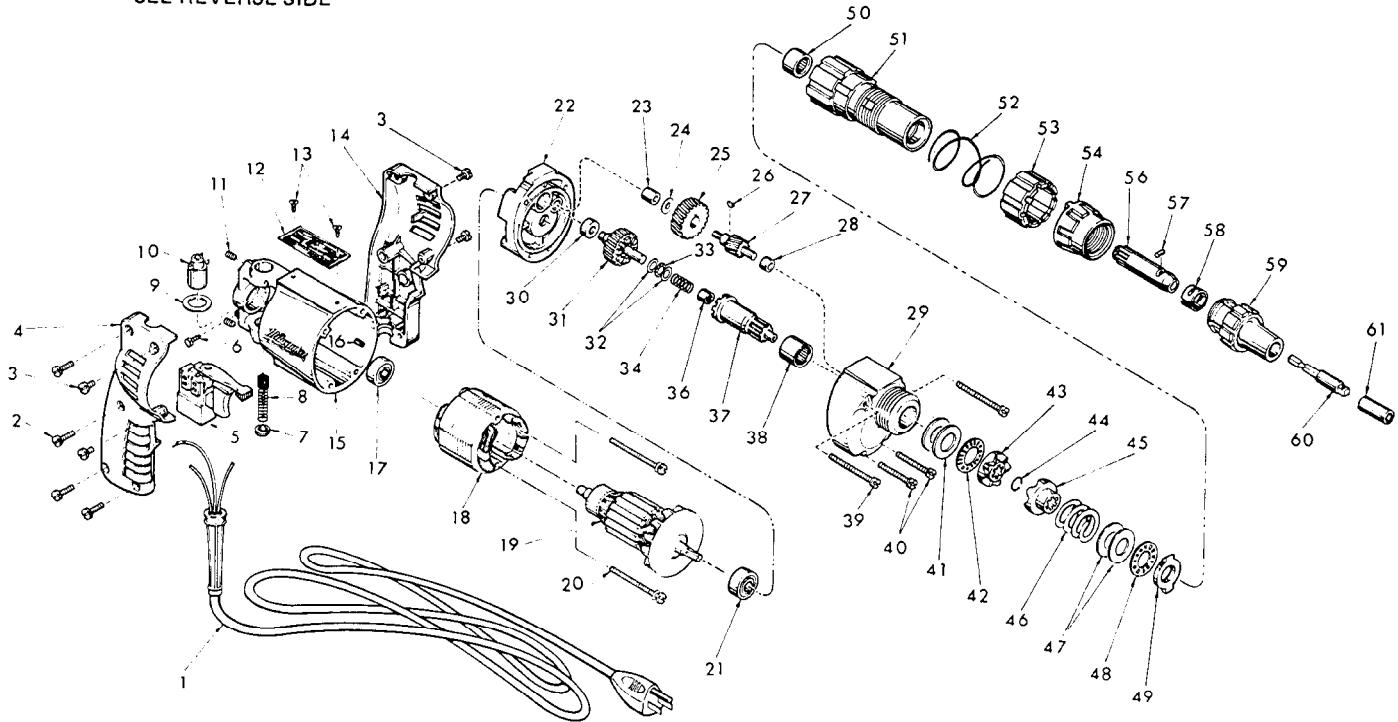


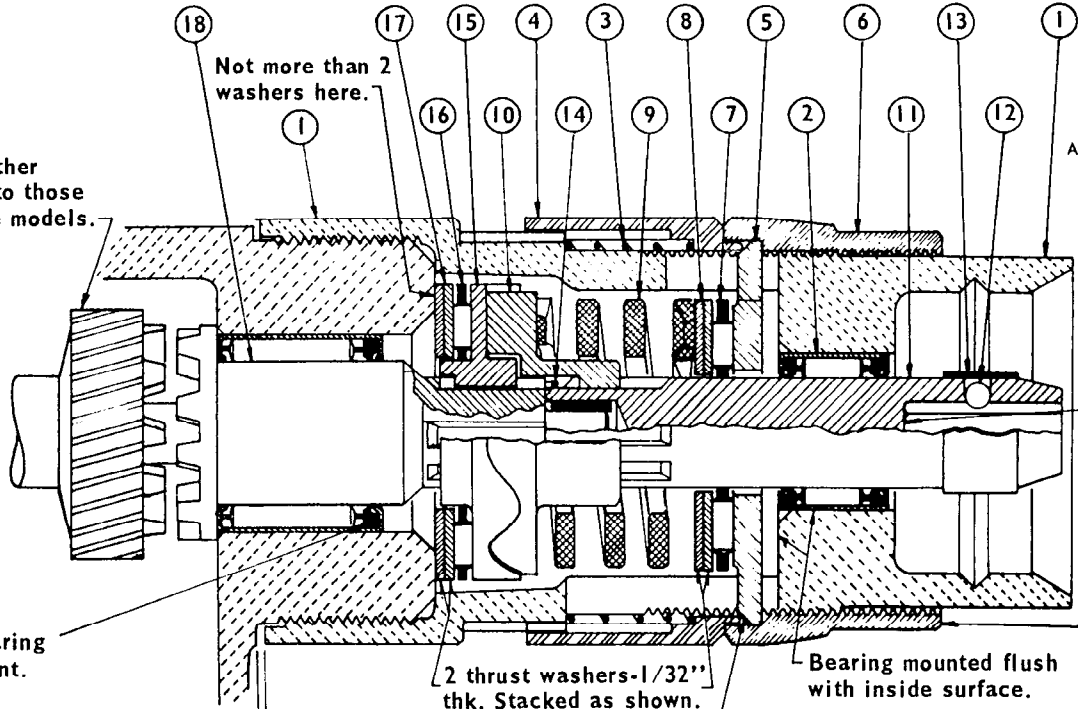
FIG.	PART NO.	DESCRIPTION OF PART	NO. REQ.	FIG.	PART NO.	DESCRIPTION OF PART	NO. REQ.
	1	Cord Set	(1)		34	Separator Spring	(1)
★	2	8-18x3/4 Thread Form Screw	(4)		35	Clutch Shaft Assembly (Includes Fig. Nos. 36 & 37)	(1)
★	3	8-32 x 3/8 Taptite Screw	(4)		36	Needle Bearing	(1)
★	4	31-44-1360 R. H. Handle Half	(1)		37	Clutch Shaft	(1)
★	5	23-66-1240 Rev. Speed Control Switch	(1)		38	Needle Bearing	(1)
	6	06-81-8625 6-32x1/4 Ground Screw	(1)		39	8-32x2 Fil. Hd. Sem	(2)
	7	23-44-0020 Brush Retaining Screw	(2)		40	8-32x1-1/2 Fil. Hd. Sem	(2)
	8	22-18-0362 Carbon Brush	(2)		41	Thrust Washer	(2)
	9	23-86-0105 Washer	(2)		42	Thrust Bearing	(1)
	10	22-22-1251 Brush Holder Assy.	(2)		43	Drive Clutch	(1)
★	11	06-83-2430 10-32x1/4 Hds. Skt. Screw	(2)		44	Retaining Ring	(1)
★	12	12-99-0019 Nameplate	(1)		45	Driven Clutch	(1)
	13	06-85-0200 6x1/4 Round Hd. Type Z Screw	(2)		46	Compression Spring	(1)
★	14	31-44-1355 L. H. Handle Half	(1)		47	Thrust Washer	(2)
★	15	28-50-6096 Motor Housing (Includes Fig. 16)	(1)		48	Thrust Bearing	(1)
	16	45-30-0120 Ball Bearing Retaining Slug	(1)		49	Adjustment Ring	(1)
	17	02-04-0740 Ball Bearing	(1)		50	Needle Bearing	(1)
★	18	18-10-0025 120 V. Field	(1)		51	Clutch Housing	(1)
	19	16-10-0590 120 V. Armature	(1)		52	Spring	(1)
	20	06-81-5950 6-32x1-7/8 Fil. Hd. Sems	(2)		53	Locking Collar	(1)
	21	02-04-0880 Ball Bearing	(1)		54	Adjusting Ring	(1)
	22	28-28-1451 Diaphragm	(1)		55	Chuck Shaft Assembly (Includes Fig. Nos. 56 thru 58)	(1)
	23	02-50-1210 Needle Bearing	(1)		56	Chuck Shaft	(1)
	24	45-88-7280 Nylon Thrust Washer	(1)		57	Loose Roller Bearing	(1)
	25	32-40-1611 Intermediate Gear	(1)		58	Bit Retaining Spring	(1)
	26	06-42-0400 Woodruff Key	(1)		59	1/4 Bit Guide	(1)
	27	36-66-4100 Intermediate Pinion Shaft	(1)			48-32-0312 5/16 Bit Guide	(1)
	28	02-50-1635 Needle Bearing	(1)			48-32-0375 3/8 Bit Guide	(1)
	29	28-14-1210 Gear Case (Includes 06-65-0825 Groove Pin)	(1)		60	1/4 Driver (For Sockets)	(1)
	30	02-08-0210 Ball Bearing	(1)		61	5/16 Hex Socket	(1)
	31	32-10-2500 Clutch Gear	(1)	★	62	Warning Label (Not Shown)	(1)
	32	45-88-0550 Thrust Washer	(2)			Omit For Canadian Tools	
	33	02-80-0100 Thrust Bearing	(1)				

PARTS LISTED IN ORDER OF ASSEMBLY

ITEM NO.	PART NO.	DESCRIPTION
1	28-50-2000	CLUTCH HOUSING
2	02-50-3225	SEALED ROLLER BEARING
3	40-50-0910	SPRING
4	31-58-0030	LOCKING COLLAR
5	42-05-0010	ADJUSTMENT RING
6	42-05-0040	ADJUSTING RING
7	02-80-6020	THRUST BEARING
8	45-88-7150	THRUST WASHERS (2 ea.)
9	40-50-1010	COMPRESSION SPRING
10	42-70-5025	DRIVEN CLUTCH
11	42-66-0670	CHUCK SHAFT
12	02-55-0150	LOOSE ROLLER BNG.
13	40-50-1450	BIT RETAINING SPRING
14	34-60-0840	RETAINING RING
15	42-70-5015	DRIVE CLUTCH
16	02-80-1210	THRUST BEARING
17	45-88-0510	THRUST WASHERS (2 ea.)
18	36-14-0660	CLUTCH SHAFT

CLUTCH SUB-ASSEMBLY

NOT IN ORDER OF ASSEMBLY



Clutch gear & other gears identical to those in positive drive models.

Not more than 2 washers here.

PRE-ASSEMBLE

1/4" hex bits, when installed, should move back & forth freely for about 1/8". If bit jams or sticks near bottom, replace 42-66-0670 chuck shaft.

Single seal bearing seal toward front.

2 thrust washers-1/32" thk. Stacked as shown.

Bearing mounted flush with inside surface.

For ease of assembly, turn adjusting ring to lowest possible setting.

1/32" space is normal- if greater, thrust washer may be caught between clutch housing and gear case.

Bevel must be toward rear of tool - ground surface toward front.

Wavy clutch splines must slide back & forth freely on shaft splines. Defective splines that stick will not allow proper functioning.

LUBRICATION

Apply 1/2 tsp. type A grease on wavy surface of item 15 and small amount on thrust bearings, items 7 & 16. Gear case lub. same as all other screwdrivers.