



# SERVICE PARTS LIST

**0-2500 R.P.M. ADJ. CLUTCH SCREWDRIVER**

**Catalog No. 6783-1**

Starting Serial No. **471-1911**

Specify Catalog and Serial No. when ordering parts

**BUL. 54-42-0351**

REVISED BUL. 54-42-0350 DATE Mar. '74

WIRING INSTRUCTIONS 58-01-0645

FOR 230V TOOL USE:  
 22-64-2665 CORD SET  
 22-18-0375 CARBON BRUSH  
 18-26-1160 FIELD  
 16-26-1295 ARMATURE

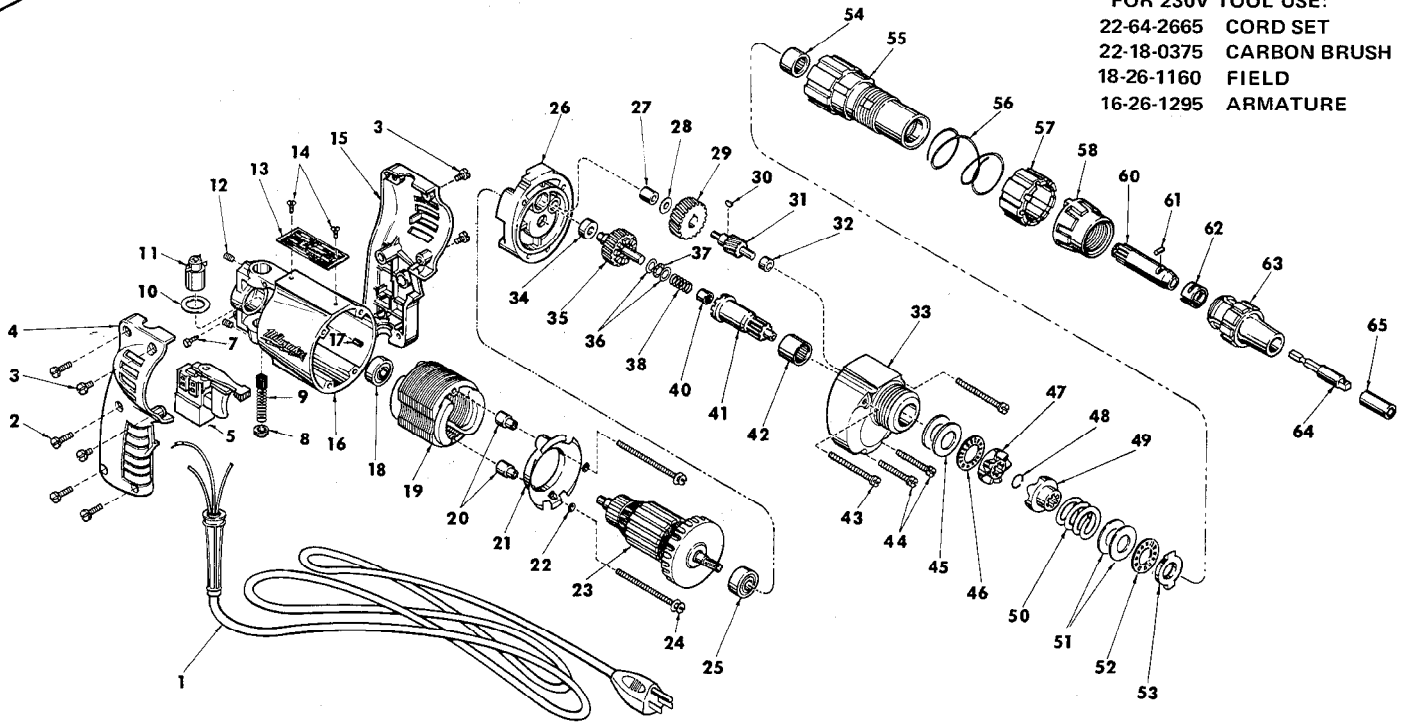


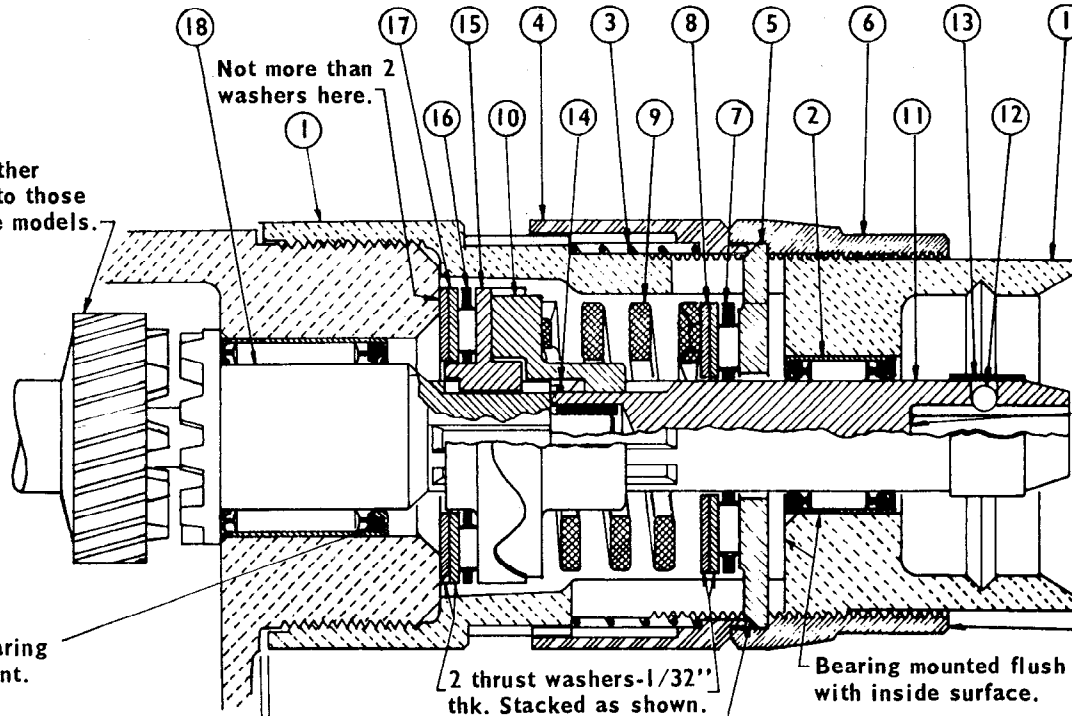
FIG.	PART NO.	DESCRIPTION OF PART	NO. REQ.	FIG.	PART NO.	DESCRIPTION OF PART	NO. REQ.
★ 1	22-64-0665	Cord Set	(1)	36	45-88-0550	Thrust Washer	(2)
2	06-81-0400	8-32x3/4 Pan Head Screw	(4)	37	02-80-0100	Thrust Bearing	(1)
3	06-81-0450	8-32x3/8 Pan Head Screw	(4)	38	40-50-6600	Separator Spring	(1)
★ 4	31-44-0280	R.H. Handle Half	(1)	39	36-14-0675	Clutch Shaft Assembly (includes fig. nos. 40 and 41)	(1)
★ 5	23-66-0792	Rev. Speed Control Switch	(1)	40	02-50-1610	Needle Bearing	(1)
7	06-81-8625	6-32x1/4 Ground Screw	(1)	41	36-14-0660	Clutch Shaft	(1)
8	23-44-0020	Brush Retaining Screw	(2)	42	02-50-4035	Needle Bearing	(1)
★ 9	22-18-0155	Carbon Brush	(2)	43	06-81-6740	8-32x2 Fil. Hd. Sem	(2)
10	23-86-0105	Washer	(2)	44	06-81-6550	8-32x1-1/2 Fil. Hd. Sem	(2)
11	22-22-0251	Brush Holder Assy.	(2)	★ 45	45-88-0510	Thrust Washer	(2)
12	06-83-2430	10-32x1/4 Hdls. Skt. Screw	(2)	★ 46	02-80-1210	Thrust Bearing	(1)
★ 13	12-99-0021	Nameplate	(1)	★ 47	42-70-5014	Drive Chuck (High Range)	(1)
14	06-85-0200	6x1/4 Round Hd. Type Z Screw	(2)	48	34-60-0840	Retaining Ring	(1)
★ 15	31-44-0290	L.H. Handle Half	(1)	★ 49	42-70-5024	Driven Clutch (High Range)	(1)
16	28-50-6091	Motor Housing (Incl. Fig. 17)	(1)	50	40-50-1010	Compression Spring	(1)
17	45-30-0120	Ball Brg. Retaining Slug	(1)	★ 51	45-88-7150	Thrust Washer	(2)
18	02-04-0740	Ball Bearing	(1)	52	02-80-6020	Thrust Bearing	(1)
19	18-22-1160	115 V. Field	(1)	53	42-05-0010	Adjustment Ring	(1)
20	45-36-0601	Baffle Spacer	(2)	54	02-50-3225	Needle Bearing	(1)
21	31-05-0010	Baffle	(1)	55	28-50-2000	Clutch Housing	(1)
22	45-88-7170	Washer	(2)	56	40-50-0910	Spring	(1)
23	16-22-1295	115 V. Armature	(1)	57	31-58-0030	Locking Collar	(1)
24	06-81-8695	6-32x2-7/16 Round Hd. Sems	(2)	58	42-05-0040	Adjusting Ring	(1)
25	02-04-0880	Ball Bearing	(1)	59	42-66-0675	Chuck Shaft Assembly (includes fig. nos. 60 thru 62)	(1)
26	28-28-1451	Diaphragm	(1)	60	42-66-0670	Chuck Shaft	(1)
27	02-50-1210	Needle Bearing	(1)	61	02-55-0150	Loose Roller Bearing	(1)
28	45-88-7280	Nylon Thrust Washer	(1)	★ 62	40-50-1450	Bit Retaining Spring	(1)
29	32-40-1611	Intermediate Gear	(1)	63	48-32-0250	1/4 Bit Guide	(1)
30	06-42-0400	Woodruff Key	(1)		48-32-0312	5/16 Bit Guide	(1)
31	36-66-4100	Intermediate Pinion Shaft	(1)		48-32-0375	3/8 Bit Guide	(1)
32	02-50-1635	Needle Bearing	(1)	64	48-32-2050	1/4 Driver (For Sockets)	(1)
33	28-14-1210	Gear Case (Includes 06-65-0825 Groove Pin)	(1)	65	49-66-3010	5/16 Hex Socket	(1)
34	02-08-0210	Ball Bearing	(1)	★ 66	12-98-7081	Caution Plate (Not Shown)	
35	32-10-2500	Clutch Gear	(1)				

**PARTS LISTED IN ORDER OF ASSEMBLY**

ITEM NO.	PART NO.	DESCRIPTION
1	28-50-2000	CLUTCH HOUSING
2	02-50-3225	SEALED ROLLER BEARING SPRING
3	40-50-0910	LOCKING COLLAR
4	31-58-0030	ADJUSTMENT RING
5	42-05-0010	ADJUSTING RING
6	42-05-0040	THRUST BEARING
7	02-80-6020	THRUST WASHERS (2 ea.)
8	45-88-7150	COMPRESSION SPRING
9	40-50-1010	DRIVEN CLUTCH
10	42-70-5025	CHUCK SHAFT
11	42-66-0670	LOOSE ROLLER BNG.
12	02-55-0150	BIT RETAINING SPRING
13	40-50-1450	RETAINING RING
14	34-60-0840	DRIVE CLUTCH
15	42-70-5015	THRUST BEARING
16	02-80-1210	THRUST WASHERS (2 ea.)
17	45-88-0510	CLUTCH SHAFT
18	36-14-0660	

CLUTCH SUB-ASSEMBLY

NOT IN ORDER OF ASSEMBLY



Clutch gear & other gears identical to those in positive drive models.

Single seal bearing seal toward front.

Not more than 2 washers here.

1/32" space is normal - if greater, thrust washer may be caught between clutch housing and gear case.

2 thrust washers-1/32" thk. Stacked as shown.

Bevel must be toward rear of tool - ground surface toward front.

Wavy clutch splines must slide back & forth freely on shaft splines. Defective splines that stick will not allow proper functioning.

Bearing mounted flush with inside surface.

PRE-ASSEMBLE

1/4" hex bits, when installed, should move back & forth freely for about 1/8". If bit jams or sticks near bottom, replace 42-66-0670 chuck shaft.

For ease of assembly, turn adjusting ring to lowest possible setting.

**LUBRICATION**

Apply 1/2 tsp. type A grease on wavy surface of item 15 and small amount on thrust bearings, items 7 & 16. Gear case lub. same as all other screwdrivers.