



# SERVICE PARTS LIST

**BULLETIN NO.**  
**54-42-5532**

SPECIFY CATALOG NO. AND SERIAL NO. WHEN ORDERING PARTS		REVISED BULLETIN 54-42-5531	DATE July '94
<b>MAGNUM SCREW-SHOOTER</b>			
CATALOG NO. <b>6754-1</b>	STARTING SERIAL NO. <b>572-56462</b>	WIRING INSTRUCTION <b>58-01-0123</b>	

**EXAMPLE:**  
Component Parts ( Small #)  
Are Included When Ordering  
The Assembly (Large #).

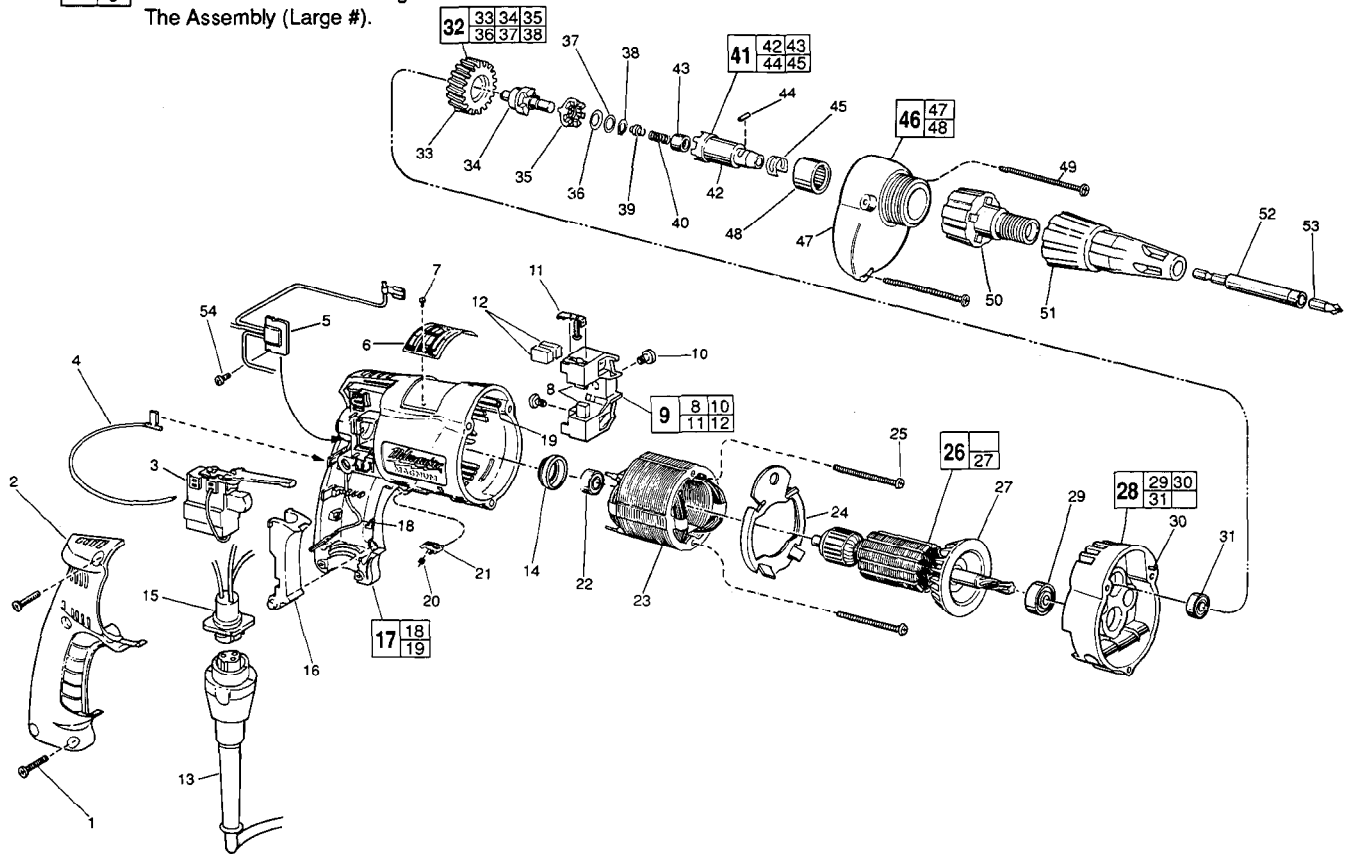


FIG.	PART NO.	DESCRIPTION OF PART	NO.	REQ.
1	06-82-7266	7-18 x 11/16" Plastite T-20	(5)	
2	31-15-0401	Handle Cover	(1)	
3	23-66-1665	Reversing Switch	(1)	
4	23-94-6245	2-1/4" Lead Assembly	(1)	
5	14-20-0250	Remote Electronic Assembly	(1)	
6	12-99-0081	Nameplate Blank	(1)	
7	06-85-0200	Nameplate Screw	(2)	
8	22-16-0275	Carbon Brush	(2)	
9	22-22-0351	Brush Holder Assembly	(1)	
10	31-75-0040	Brush Holder Screw	(2)	
11	22-20-0345	Brush Spring Assembly	(2)	
12	22-16-0275	Carbon Brush (Spares)	(2)	
13	48-76-4008	Cord Set	(1)	
14	22-72-0100	Bearing Cup	(1)	
15	22-56-0630	Pin Housing Assembly	(1)	
16	45-72-0080	Trigger	(1)	
17	14-38-0540	Motor Housing Assembly	(1)	
18	23-94-9960	Ground Wire Assembly	(1)	
19	44-60-1290	Grounding Pin	(1)	
20	40-50-0085	Lock Button Spring	(1)	
21	42-42-0150	Lock Button	(1)	
22	02-04-0645	Ball Bearing	(1)	
23	18-11-0075	120 Volt Field	(1)	
24	42-14-0345	Baffle	(1)	
25	06-82-7393	7-18 x 2" Pan Hd. T-20	(2)	
26	16-10-0510	120 Volt Armature Assembly	(1)	
27	22-84-0650	Fan Assembly	(1)	
★ 28	14-13-0485	Diaphragm Assembly	(1)	

FIG.	PART NO.	DESCRIPTION OF PART	NO.	REQ.
29	02-04-0847	Ball Bearing	(1)	
30	06-65-0825	1/8" x 1/2" Groove Pin No. 5	(1)	
31	02-04-0645	Ball Bearing	(1)	
32	32-10-4040	Clutch Gear Assembly	(1)	
33	32-75-2930	Spindle Gear	(1)	
34	36-14-0685	Gear Shaft	(1)	
35	42-70-5030	Drive Clutch	(1)	
36	45-88-0705	Spring Washer	(1)	
37	45-88-0550	Flat Washer	(1)	
38	34-60-0510	External Retaining Ring	(1)	
39	44-60-0500	Thrust Pin	(1)	
40	40-50-0080	Separator Spring	(1)	
41	14-73-0120	Chuck Shaft Assembly	(1)	
42	42-66-6770	Chuck Shaft	(1)	
43	02-50-1615	Needle Bearing	(1)	
44	02-55-0150	Loose Roller Bearing	(1)	
45	40-50-1450	Bit Retaining Spring	(1)	
46	14-30-0350	Gear Case Assembly	(1)	
47	-----	Gear Case	(1)	
48	02-50-4050	Needle Bearing	(1)	
49	06-82-7380	7-18 x 1-7/8" Pan Hd. T-20	(3)	
50	48-32-2500	Bit Housing	(1)	
51	49-26-1040	Locator Assembly	(1)	
52	48-32-3025	Magnet Bit Holder 1/4" Hex	(1)	
53	48-32-1050	Insert Bit No. 2 Phil 1/4" Hex	(1)	
54	06-82-7212	4-20x1/4" Pan Hd. Plastite T-10	(1)	
	10-98-5986	Warning Label	(1)	

**FIG. LUBRICATION**

47 1-1/2 Oz. Type "E" Grease , No. 49-08-4122.

**MILWAUKEE ELECTRIC TOOL CORPORATION**  
**13135 W. LISBON RD., BROOKFIELD, WI 53005**