



SERVICE PARTS LIST

BULLETIN NO.
54-42-5155

SPECIFY CATALOG NO. AND SERIAL NO. WHEN ORDERING PARTS		REVISED BULLETIN 54-42-5154	DATE Oct. '86
0-2500 R.P.M. REV. DRYWALL SCREWDRIVER		WIRING INSTRUCTION ^o 58-01-0015	
CATALOG NO. 6747-1	STARTING SERIAL NO. 453-105000		

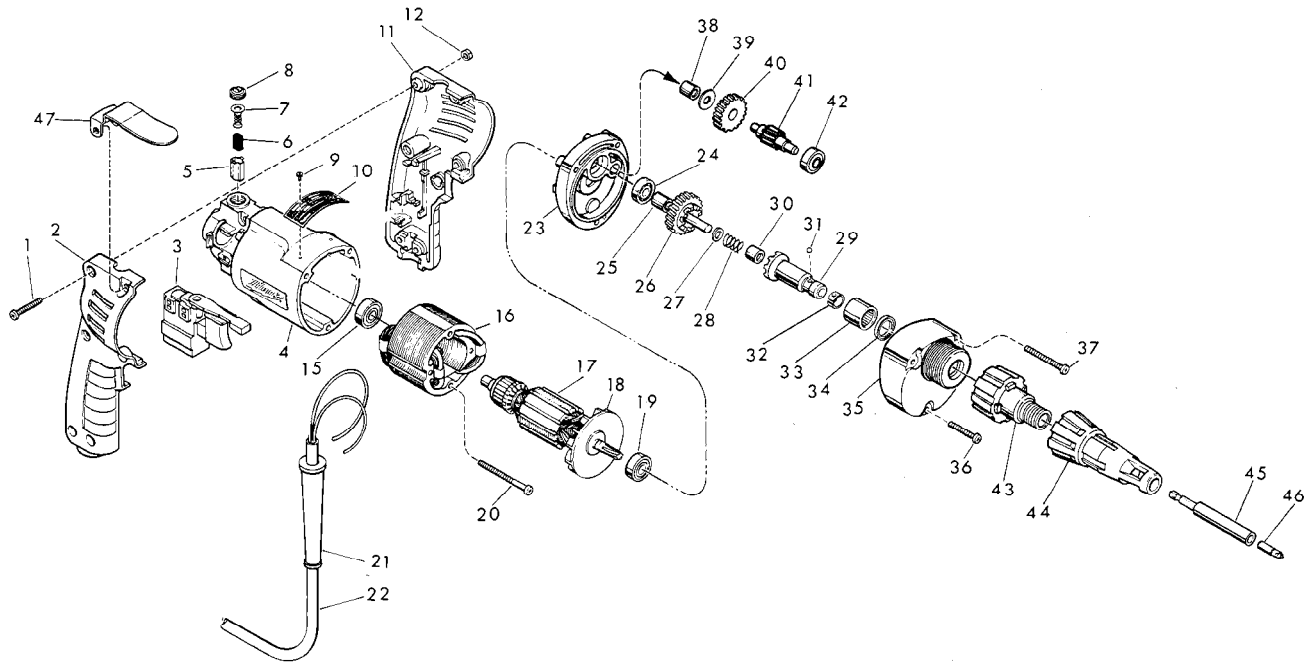


FIG. PART NO.	DESCRIPTION OF PART	NO. REQ.
★ 1 06-81-0473	8-32 x 1" Pan Hd. Pozi Dr. Screw	(6)
★ 2 31-44-1130	Right Handle Half	(1)
★ 3 23-66-1465	Speed Control Switch	(1)
★ 4 31-50-0345	Motor Housing	(1)
★ 5 22-20-0530	Brush Tube	(2)
★ 6 22-16-0275	Carbon Brush	(2)
★ 7 23-52-0210	Brush Spring Assembly	(2)
★ 8 23-44-0120	Brush Retaining Screw	(2)
9 06-85-0200	Nameplate Screw	(2)
★ 10 12-99-0445	Nameplate Blank	(1)
★ 11 31-44-1140	Left Handle Half	(1)
★ 12 06-55-0835	8-32 Hex Nut	(6)
★ 13 22-56-0455	Terminal Block	(1)
★ 14 44-60-0530	Ground Pin	(1)
★ 15 02-04-0645	Ball Bearing	(1)
★ 16 18-10-0130	120V Field	(1)
★ 17 16-10-0591	120V Armature (Includes Fig. No. 18)	(1)
18 22-84-0440	Fan Assembly	(1)
★ 19 02-04-0848	Ball Bearing	(1)
★ 20 06-95-0180	7-18 x 2" Pan Hd. Plastite Screw	(2)
★ 21 44-76-0130	Cord Protector	(1)
★ 22 22-64-1120	Cord Set	(1)
★ 23 28-28-1800	Diaphragm	(1)
★ 24 02-04-0645	Ball Bearing	(1)
★ 25 45-36-1280	Spacer	(1)
★ 26 32-10-4045	Clutch Gear Assembly	(1)
★ 27 45-88-0712	Thrust Washer	(1)
28 40-50-6600	Separator Spring	(1)
★ 29 42-66-0766	Clutch Chuck Assy. (Incl. Fig. Nos. 30 Thru 32)	(1)
★ 30 02-50-2400	Needle Bearing	(1)

FIG. PART NO.	DESCRIPTION OF PART	NO. REQ.
★ 31 02-02-0130	Steel Ball	(1)
★ 32 40-50-0510	Bit Retaining Spring	(1)
★ 33 02-50-4220	Needle Roller Bearing	(1)
★ 34 45-06-0106	Oil Seal	(1)
★ 35 14-30-0600	Gear Case Assembly	(1)
★ 36 06-95-0175	7-18 x 1-1/2" Pan Hd. Plastite Screw	(1)
★ 37 06-95-0155	7-18 x 2-1/2" Pan Hd. Pozi Dr. Screw	(2)
★ 38 02-50-2410	Needle Bearing	(1)
★ 39 45-88-7990	Thrust Washer	(1)
★ 40 32-40-1612	Intermediate Gear	(1)
★ 41 36-66-4101	Intermediate Pinion Shaft	(1)
★ 42 02-04-0640	Ball Bearing	(1)
43 48-32-2500	Bit Housing	(1)
★ 44 49-26-1040	Locator Assembly	(1)
★ 45 48-32-3065	Magnetic Bit Holder	(1)
46 48-32-1050	#2 Insert Bit	(1)
★ 47 48-67-0101	Belt Clip	(1)

NOTES:

Screws Fig. No. 1, Fig. No. 20 & Fig. Nos. 36 & 37 Should Be Torqued To 15-20 Lbs.

LUBRICATION

Use 1-1/2 Oz. Of Type "E" Grease In Gear Case