



SERVICE PARTS LIST

BULLETIN NO.
54-42-6200

SPECIFY CATALOG NO. AND SERIAL NO. WHEN ORDERING PARTS		REVISED BULLETIN	DATE
DRYWALL SCREWDRIVER			Mar. 2002
CATALOG NO. 6743-20	STARTING SERIAL NO. 159A	WIRING INSTRUCTION 58-01-1800	

EXAMPLE:

00	0
----	---

 Component Parts (Small #) Are Included
 When Ordering The Assembly (Large #).

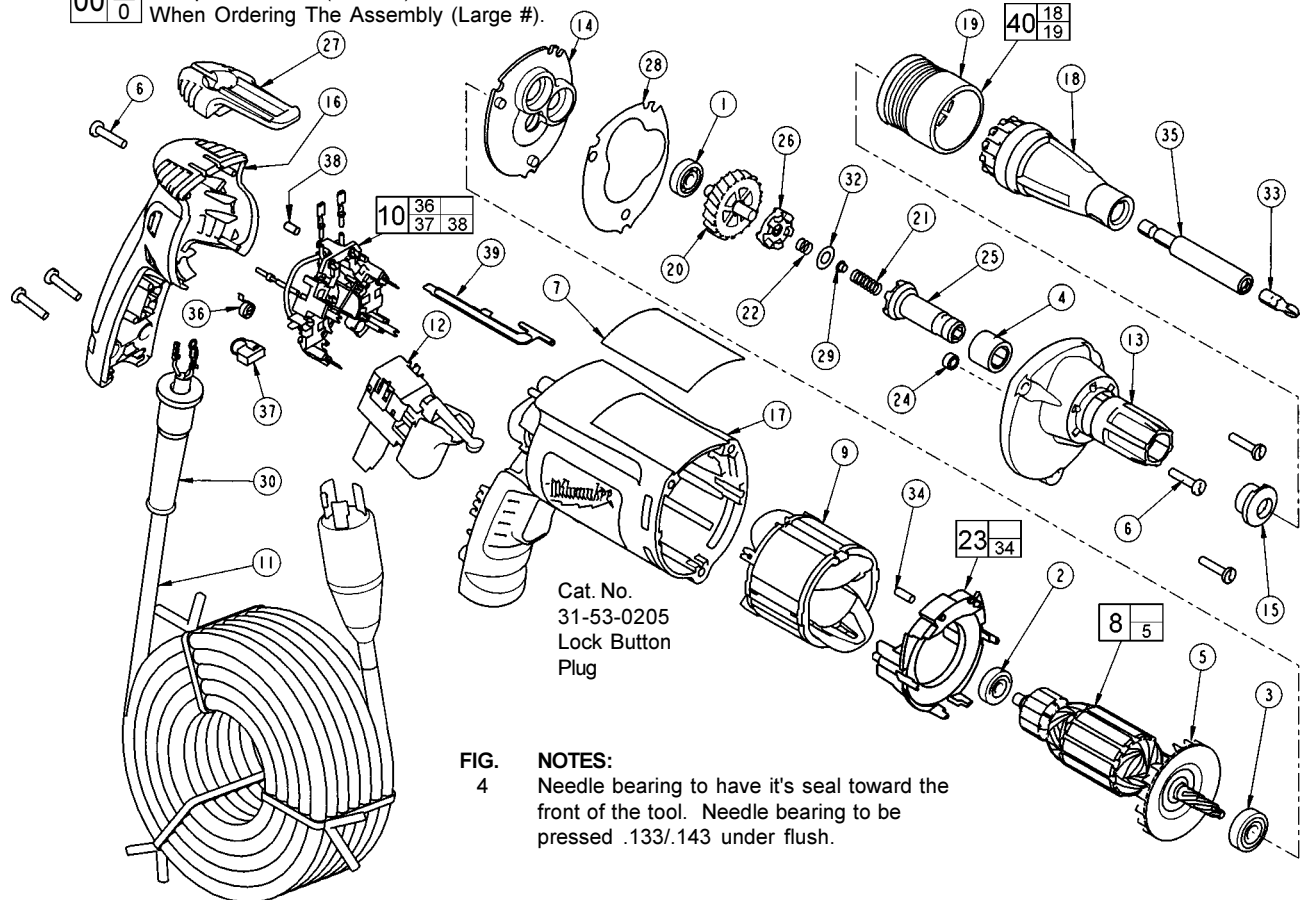


FIG.	PART NO.	DESCRIPTION OF PART	NO. REQ.	FIG.	PART NO.	DESCRIPTION OF PART	NO. REQ.
1	02-04-0640	Ball Bearing	(1)	32	45-88-0555	Clutch Thrust Washer	(1)
2	02-04-0645	Ball Bearing	(1)	33	48-32-1040	#2 Phillips Insert Bit	(1)
3	02-04-0852	Ball Bearing	(1)	34	45-30-0030	Slug	(2)
4	02-50-3245	Needle Bearing	(1)	35	48-32-3065	Magnetic Bit Holder	(1)
5	22-84-0840	Fan	(1)	36	23-52-1610	Brush Spring	(2)
6	06-82-7275	7-18 x 3/4" Slotted Plastite Torx T-20	(6)	37	22-18-1310	Brush Assembly	(2)
7	12-99-2565	Service Nameplate	(1)	38	45-30-0035	Slug	(1)
8	16-10-2200	Armature	(1)	39	44-60-1700	Ground Pin	(1)
9	18-07-2200	Field	(1)	40	49-26-1036	Drywall Locator Assembly	(1)
10	22-18-1210	Brush Card Assembly	(1)				
11	22-64-3251	50 Ft. Lock Plug Cord Assembly	(1)				
12	23-66-2585	Switch	(1)				
13	28-14-2375	Gearcase	(1)				
14	28-28-2315	Diaphragm	(1)				
15	30-37-0046	Drywall Nose Guide	(1)				
16	31-15-2010	Handle Halve	(1)				
17	31-50-2010	Motor Housing	(1)				
18	31-51-0095	Drywall Locator	(1)				
19	31-58-0515	Snap Sleeve	(1)				
20	32-10-0520	Clutch Gear Assembly	(1)				
21	40-50-0095	Separator Spring	(1)				
22	40-50-8515	Bias Spring	(1)				
23	42-14-0460	Baffle Assembly	(1)				
24	42-40-0045	Armature Bushing	(1)				
25	42-66-0715	Clutch Chuck Assembly	(1)				
26	42-70-0310	Drive Clutch	(1)				
27	42-70-5280	Belt Clip	(1)				
28	43-44-0985	Gasket	(1)				
29	44-60-0505	Thrust Pin	(1)				
30	44-76-0210	Cord Protector	(1)				

FIG. LUBRICATION:
 20,22 Place .02 oz. (.5 grams) of type "Y" grease, No 49-08-5270, on bias spring. Place .02 oz. (.5 grams) total of grease in the clutch pockets of clutch gear.
 8,13 Place .27 oz. (7.6 grams) of type "Y" grease at the armature pinion location in the gearcase pocket and push down .20".
 13,14 Apply a light film of type "Y" grease to needle and ball bearing pockets in diaphragm and gearcase prior to pressing bearings in.
 21,32 Place .02 oz. (.5 grams) of type "Y" grease to clutch thrust washer, thrust pin and separator spring during assembly.