



SERVICE PARTS LIST

BUL. 54-42-5001

DRYWALL SCREWDRIVER

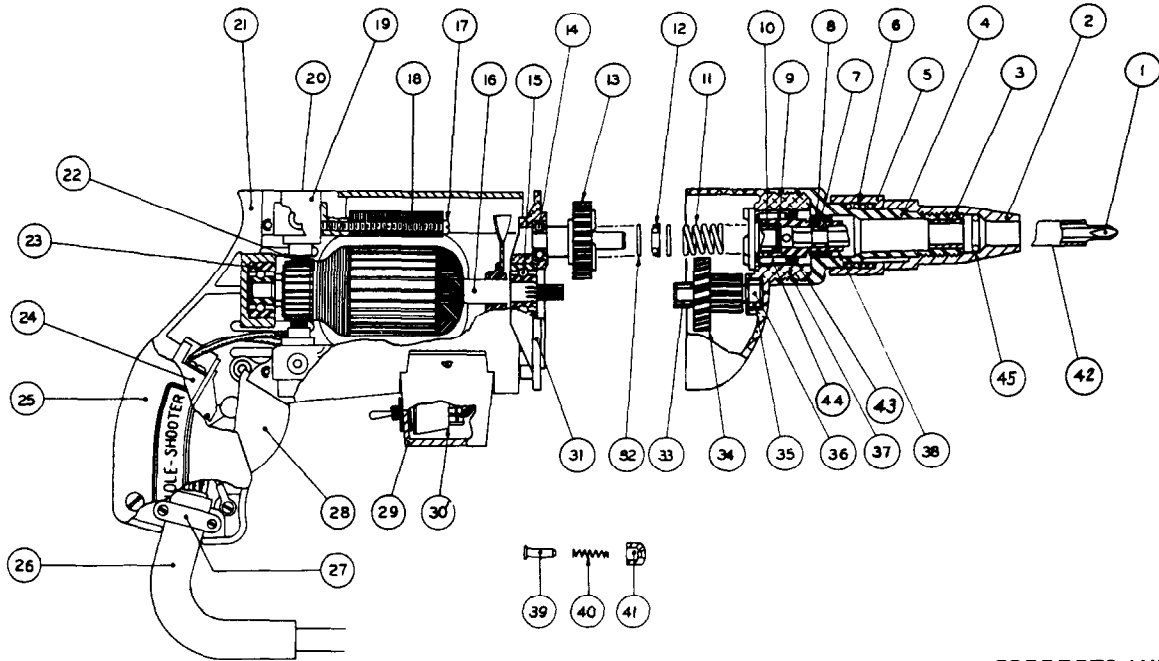
REVISED BUL 6337-2 DATE Feb. '68

Catalog No. 6740-1

Starting Serial No. **337-2242**

WIRING INSTR.

Both Model and Serial No. must be furnished to obtain correct parts.



CORRECTS AND SUPERSEDES SERVICE BULLETIN 6227-2A DATED 4/8/66

ILLUSTRATED PARTS

FIG.	PART NO.	DESCRIPTION OF PART	FIG.	PART NO.	DESCRIPTION OF PART
1	48-32-1050	No. 2 Phillips Insert	22	22-18-0090	Carbon Brush Assembly (2)
2	44-18-0051	Locator	23	02-04-0740	Ball Bearing
3	42-40-0320	Bushing	24	23-66-0280	Switch
4	43-76-0151	Bit Housing	25	28-20-3002	Handle Cover
5	42-76-0151	Locking Collar	26	22-64-0170	Cord Set
6	40-50-6700	Locking Collar Spring	27	28-17-0400	Cord Clamp
7	02-02-0150	5/32 Dia. Ball	*28	31-92-0101	Switch Trigger
8	40-50-1400	Bit Retaining Spring	29	28-50-7041	Reversing Switch Housing
9	45-88-0540	Backup Washer	30	23-66-0220	Reversing Switch
10	02-50-1610	Needle Bearing	31	28-28-1381	Diaphragm
11	40-50-6600	Separator Spring	32	45-88-0550	Thrust Washer (2)
12	02-80-0100	Thrust Bearing	33	02-50-1210	Needle Bearing
13	32-10-0071	Clutch Gear	34	32-40-1041	Intermediate Gear
14	02-08-0210	Ball Bearing	35	02-50-1620	Needle Bearing
15	02-04-0880	Ball Bearing	36	36-66-3801	Intermediate Pinion Shaft
16	16-22-1231	Armature	37	28-14-1201	Gear Case
17	06-81-5950	6-32x1-7/8 Fil.Hd. Field Screws (2)	38	42-66-0321	Chuck
18	18-22-1121	Field Assembly	39	44-70-0071	Trigger Lock Plunger
19	22-22-0050	Brush Holder Assembly (2)	40	40-50-1200	Trigger Lock Spring
20	23-44-0020	Brush Retaining Cap (2)	41	42-42-0061	Trigger Lock Button
21	28-50-4523	Motor Housing	42	48-32-3025	Magnetic Bit Holder
			43	45-06-0065	Spindle Oil Seal
			44	02-50-4030	Needle Bearing
			45	34-40-0950	'O' Ring

MISCELLANEOUS PARTS NOT SHOWN

PART NO.	DESCRIPTION OF PART	PART NO.	DESCRIPTION OF PART
06-42-0400	Woodruff Key	12-98-0600	Name Plate
06-81-6350	8-32x1 Fil.Hd. Gear Case Sems (2)	06-65-1524	5/64x3/16 Roll Pin
06-65-0825	Type 5 1/8x1/2 Groove Pin	06-81-6550	8-32x1-1/2 Fil.Hd. Sem Gear Case Scs. (2)
06-81-5800	6-32x5/16 Fil.Hd. Sem Switch Mtg. Screw	06-81-4300	3-48x3/16 Rd.Hd. Name Plate Screw (2)
06-81-6150	8-32x1/2 Fil.Hd. Sems Handle Cover Screws (3)	42-14-0060	Baffle
06-81-8625	6-32x1/4 (Brass) Rd.Hd. Ground Screw Sem	45-30-0060	Ball Bearing Ret. Slug
48-03-0010	Attachment Plug Adaptor	06-81-5800	6-32 x 5/16 Fil. Hd. Sem. Rev. Switch Hsg. Scs. (2)
06-83-0100	10-24x1/4 Hd'less Slotted Brush Holder Scs. (2)	06-81-6150	8-32x1/2 Fil.Hd. Cord Clamp Sems (2)
*23-16-0265	Switch Insulator		