



# SERVICE PARTS LIST

**BULLETIN NO.**  
**55-42-8075**

SPECIFY CATALOG NO. AND SERIAL NO. WHEN ORDERING PARTS		REVISED BULLETIN	DATE
<b>1-1/4"-3" SHARPFIRE</b>			Feb. 2007
<b>CATALOG NO.</b>	<b>6708-56</b>	<b>STARTING SERIAL NO.</b>	<b>A07A</b>
		<b>WIRING INSTRUCTION</b> <b>58-03-1805</b>	

**EXAMPLE:**  

00	0
----	---

 Component Parts (Small #) Are Included When Ordering The Assembly (Large #).

**NOTE: 6708-55 Includes Magazine Attachment No. 48-05-1005 and Extension. See Reverse Side.**

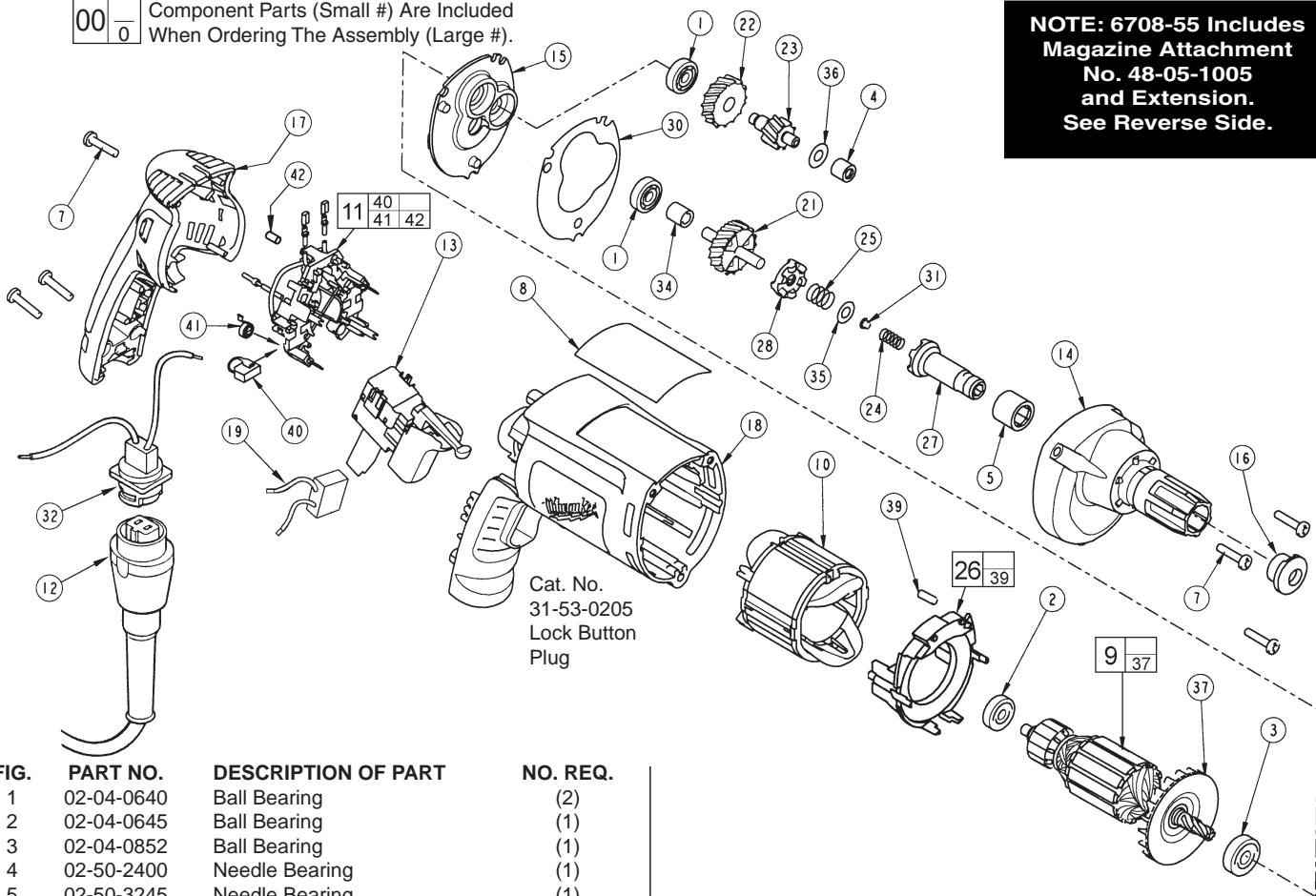


FIG.	PART NO.	DESCRIPTION OF PART	NO. REQ.
1	02-04-0640	Ball Bearing	(2)
2	02-04-0645	Ball Bearing	(1)
3	02-04-0852	Ball Bearing	(1)
4	02-50-2400	Needle Bearing	(1)
5	02-50-3245	Needle Bearing	(1)
7	06-82-7275	7-18 x 3/4 Slotted Plastite Torx T-20	(6)
8	12-99-2740	Service Nameplate	(1)
9	16-10-2205	Armature	(1)
10	18-07-2200	Field	(1)
11	22-18-1230	Brush Card Assembly	(1)
12	22-64-0676	Quik-Lok Cord Set	(1)
13	23-66-2585	Switch	(1)
14	28-14-2380	Gearcase	(1)
15	28-28-2315	Diaphragm	(1)
16	30-37-0046	Drywall Nose Guide	(1)
17	31-15-2030	Handle Halve	(1)
18	31-50-2030	Motor Housing	(1)
19	22-33-0550	Suppressor	(1)
21	32-10-0525	Clutch Gear Assembly	(1)
22	32-40-0100	Intermediate Gear	(1)
23	36-66-0120	Intermediate Shaft	(1)
24	40-50-0095	Separator Spring	(1)
25	40-50-8515	Bias Spring	(1)
26	42-14-0460	Baffle Assembly	(1)
27	42-66-0715	Clutch Chuck Assembly	(1)
28	42-70-0310	Drive Clutch	(1)
30	43-44-0985	Gasket	(1)
31	44-60-0505	Thrust Pin	(1)
32	22-56-1017	Blade Housing Assembly	(1)
34	45-36-1280	Spacer	(1)
35	45-88-0555	Clutch Thrust Washer	(1)
36	45-88-7990	Thrust Washer	(1)
37	22-84-0845	Fan Assembly	(1)
39	45-30-0030	Slug	(2)
40	22-18-1310	Brush Assembly	(2)
41	23-52-1610	Brush Spring	(2)
42	45-30-0035	Slug	(1)

**FIG. LUBRICATION:**  
 21,25 Place .02 oz. (.5 grams) of type "Y" grease, No 49-08-5270, on bias spring. Place .02 oz. (.5 grams) total of grease in the clutch pockets of clutch gear.

14 Place .11 oz. (3.1 grams) of type "Y" grease on top of the inserted intermediate needle bearing. After inserting the pinion assembly, place .48 oz. (13.6 grams) of grease at the armature pinion location in the gearcase pocket and push down .20".

14,15 Apply a light film of type "Y" grease to needle and ball bearing pockets in diaphragm and gearcase prior to pressing bearings in.

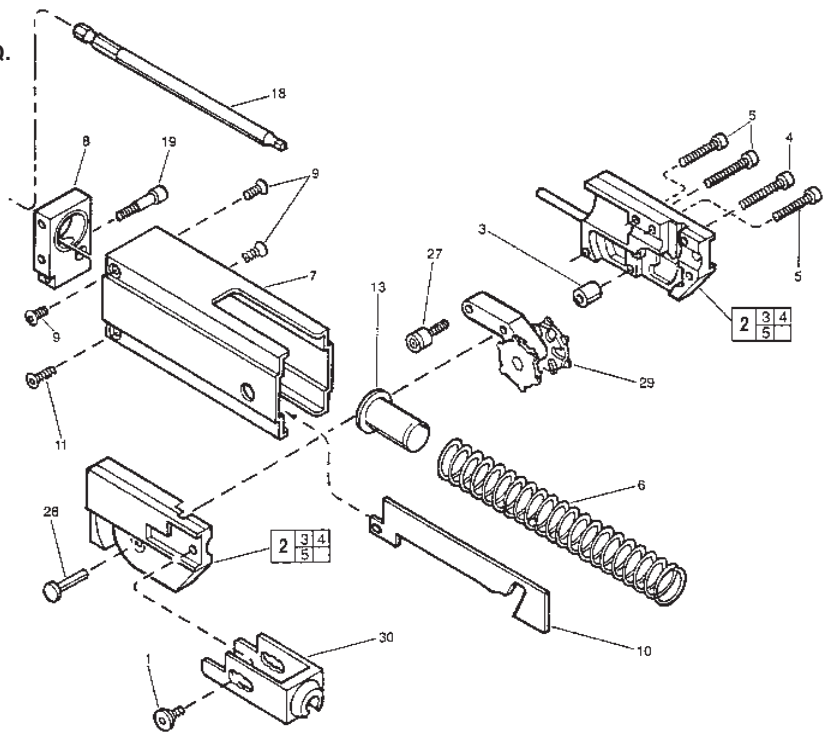
24,31 Place .02 oz. (.5 grams) of type "Y" grease to clutch thrust washer, thrust pin and separator spring during assembly.

**FIG. NOTES:**  
 4 Needle bearings to be pressed flush to .010 under flush, from end which has the vendor identification.

5 Needle bearing to have it's seal toward the front of the tool. Needle bearing to be pressed .133/.143 under flush.

**Cat. No. 48-05-1005 MAGAZINE ATTACHMENT**

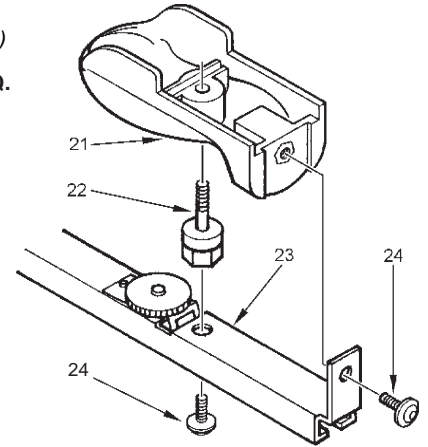
FIG.	PART NO.	DESCRIPTION OF PART	NO. REQ.
1	06-81-1700	M5 x 0.8 x 5. lg, 3mm Skt. Hd. Sld. Sc.	2
2	43-56-0315	Gliding Assembly (Incl. 3,4,5)	1
3	42-40-0001	Distance Bearing Bushing	1
4	06-95-1000	M3.5 x 22. lg, Phillips Pan Hd. Plast. Sc.	1
5	06-95-1005	M3.5 x 24. lg, Phillips Pan Hd. Plast. Sc.	3
6	40-50-0406	Spring (Green)	1
7	43-76-0052	Housing	1
8	44-66-1500	Mounting Plate	1
9	06-81-2000	M4 x 0.7 x 8. lg, 2.5mm Skt. Hd. Flat Sc.	3
10	44-66-0306	Curve Plate	1
11	06-81-2005	M4 x 0.7 x 10. lg, 2.5mm Skt. Hd. Flat Sc.	1
13	43-56-0300	Spring Guide	1
18	48-30-1527	140mm #2 Square Bit	1
18A	48-30-1528	140mm #2 Phillips Bit	1
19	06-81-2010	M5 x 0.8 x 25. lg, 4mm Skt. Hd. Sld. Sc.	1
27	06-81-2025	M5 x 0.8, 3mm Socket Hd. Roller Screw	1
28	44-60-1520	Pivot Pin	1
29	42-74-0095	Gear Wheel Unit	1
30	43-46-0208	Depth Control, 1-1/4" to 3"	1
	49-96-4800	Hex Key Set-2, 2.5, 3 & 4mm (Not Shown)	1
	10-15-6100	Depth Label (Not Shown)	1
	12-25-1470	Warning Label (Not Shown)	1



**FIG. NOTES:**  
9,11 Use Loctite 272 on screws.

**Cat. No. 14-46-0906 2 BEND BELT GUIDE ASSEMBLY**  
(Not Included With 48-05-1005 Screw-Shooter Magazine Attachment)

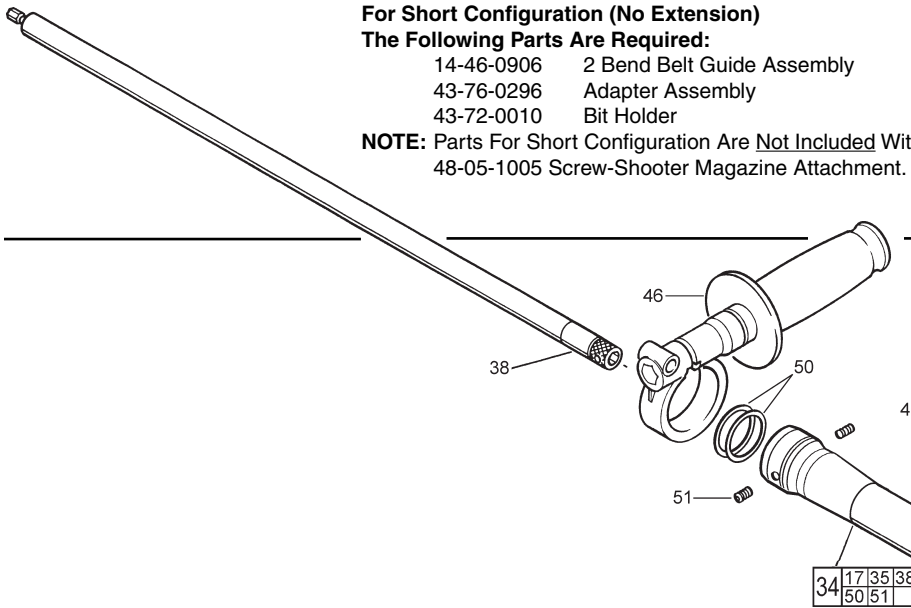
FIG.	PART NO.	DESCRIPTION OF PART	NO. REQ.
21	43-62-1230	Handle	1
22	06-75-0400	Shoulder Bolt	1
23	-----	2 Bend Belt Guide	1
★ 24	-----	Screws	2



**For Short Configuration (No Extension)**  
**The Following Parts Are Required:**

14-46-0906	2 Bend Belt Guide Assembly	1
43-76-0296	Adapter Assembly	1
43-72-0010	Bit Holder	1

**NOTE:** Parts For Short Configuration Are Not Included With 48-05-1005 Screw-Shooter Magazine Attachment.



**20.5" EXTENSION PARTS**

FIG.	PART NO.	DESCRIPTION OF PART	NO. REQ.
17	44-40-0575	Stop Nut	2
34	14-38-0677	Extension Tube & Shaft Subassy (Incl. 17,35,38,50,51)	1
35	45-76-0307	Extension Tube	1
38	45-08-0026	Extension Drive Shaft	1
39	14-38-0685	Screw Guide Subassembly (Incl. 40,41,42,43,44)	1
40	-----	Screw Guide	1
★ 41	-----	Screw	1
42	43-56-0330	Slotted Guide Screw	1
43	06-81-2040	M4 x 0.7 x 25. lg, 3mm Socket Hd. Screw	2
44	-----	Clamp	1
46	14-34-0506	Side Handle Subassembly	1
50	34-40-0700	30 x 25 x 2.5mm O-Ring	2
51	06-83-1400	M6 x 1.0 x 6 lg, 3mm Socket Hd. Set Screw	2

