



SERVICE PARTS LIST

BULLETIN NO.
54-42-6101

SPECIFY CATALOG NO. AND SERIAL NO. WHEN ORDERING PARTS		REVISED BULLETIN	DATE
1" - 1-5/8" SHARPFIRE		54-42-6100	Apr. 2002
CATALOG NO.	6707-20	WIRING INSTRUCTION	
STARTING SERIAL NO.	120B	58-01-1800	

EXAMPLE:

00	0
----	---

 Component Parts (Small #) Are Included
 When Ordering The Assembly (Large #).

NOTE: 6707-20 Includes Magazine Attachment No. 48-05-1000. See Reverse Side.

★=Part number change from previous service parts list.

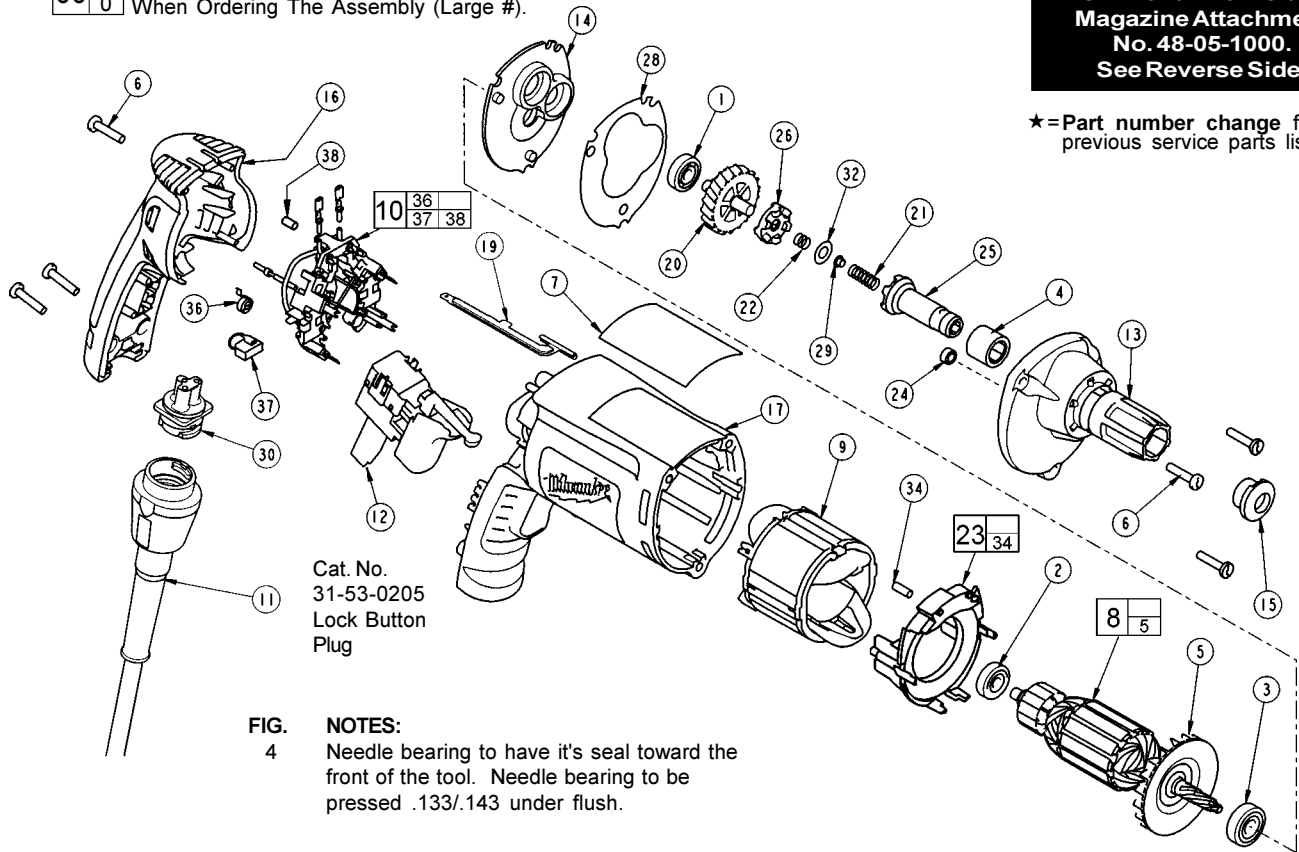


FIG. 4 NOTES:
 4 Needle bearing to have it's seal toward the front of the tool. Needle bearing to be pressed .133/.143 under flush.

FIG.	PART NO.	DESCRIPTION OF PART	NO. REQ.	FIG.	PART NO.	DESCRIPTION OF PART	NO. REQ.
1	02-04-0640	Ball Bearing	(1)	32	45-88-0555	Clutch Thrust Washer	(1)
2	02-04-0645	Ball Bearing	(1)	34	45-30-0030	Slug	(2)
3	02-04-0852	Ball Bearing	(1)	36	23-52-1610	Brush Spring	(2)
4	02-50-3245	Needle Bearing	(1)	37	22-18-1310	Brush Assembly	(2)
5	22-84-0840	Fan	(1)	38	45-30-0035	Slug	(1)
6	06-82-7275	7-18 x 3/4" Slotted Plastite Torx T-20	(6)	FIG. LUBRICATION:			
7	12-99-2565	Service Nameplate	(1)	20,22	Place .02 oz. (.5 grams) of type "Y" grease, No 49-08-5270, on bias spring. Place .02 oz. (.5 grams) total of grease in the clutch pockets of clutch gear.		
8	16-10-2200	Armature	(1)	8,13	Place .27 oz. (7.6 grams) of type "Y" grease at the armature pinion location in the gearcase pocket and push down .20".		
9	18-07-2200	Field	(1)	13,14	Apply a light film of type "Y" grease to needle and ball bearing pockets in diaphragm and gearcase prior to pressing bearings in.		
10	22-18-1210	Brush Card Assembly	(1)	21,32	Place .02 oz. (.5 grams) of type "Y" grease to clutch thrust washer, thrust pin and separator spring during assembly.		
11	48-76-4008	Quik-Lok Cord Set	(1)				
12	23-66-2585	Switch	(1)				
13	28-14-2375	Gearcase	(1)				
14	28-28-2315	Diaphragm	(1)				
15	30-37-0046	Drywall Nose Guide	(1)				
16	31-15-2030	Handle Halve	(1)				
17	31-50-2030	Motor Housing	(1)				
19	44-60-1700	Ground Pin	(1)				
20	32-10-0520	Clutch Gear Assembly	(1)				
21	40-50-0095	Separator Spring	(1)				
22	40-50-8515	Bias Spring	(1)				
23	42-14-0460	Baffle Assembly	(1)				
24	42-40-0045	Armature Bushing	(1)				
25	42-66-0715	Clutch Chuck Assembly	(1)				
26	42-70-0310	Drive Clutch	(1)				
28	43-44-0985	Gasket	(1)				
29	44-60-0505	Thrust Pin	(1)				
30	22-56-1010	Pin Housing Assembly	(1)				



SERVICE PARTS LIST

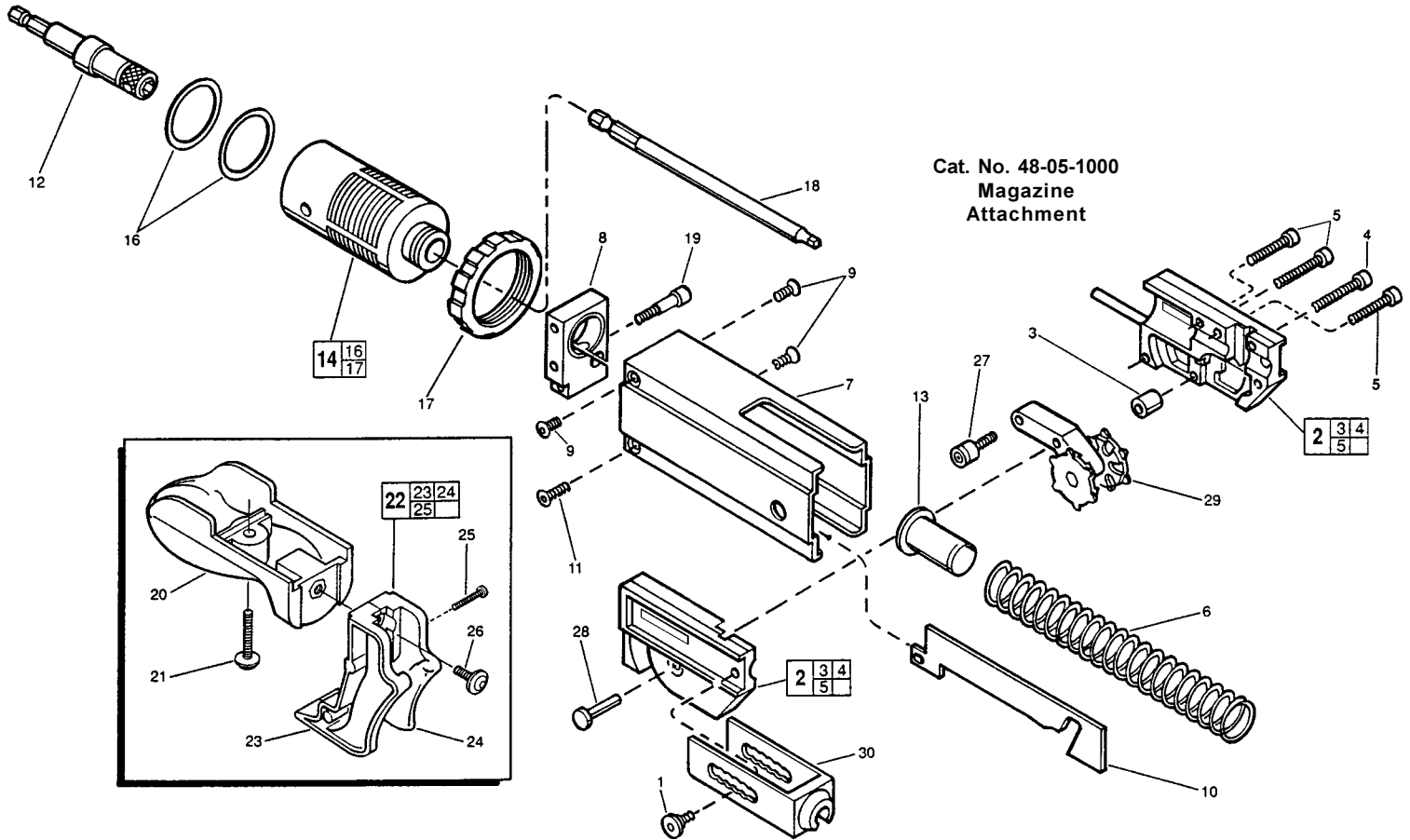
SPECIFY CATALOG NO. AND SERIAL NO. WHEN ORDERING PARTS		REVISED BULLETIN	DATE
SCREW-SHOOTER MAGAZINE ATTACHMENT			
CATALOG NO. 48-05-1000	STARTING SERIAL NO. 119408022	WIRING INSTRUCTION	

EXAMPLE:

00	0
----	---

Component Parts (Small #) Are Included When Ordering The Assembly (Large #).

★ = Part number change from previous service parts list.



Cat. No. 48-05-1000 Magazine Attachment

FIG.	PART NO.	DESCRIPTION OF PART	NO. REQ.
	1	06-81-1700 M5 x 0.8 x 5. lg, 3mm Skt. Hd. Slid. Sc.	2
★	2	43-56-0315 Gliding Assembly (Incl. 3,4,5)	1
	3	42-40-0001 Distance Bearing Bushing	1
★	4	06-95-1000 M3.5 x 22. lg, Phillips Pan Hd. Plast. Sc.	1
★	5	06-95-1005 M3.5 x 24. lg, Phillips Pan Hd. Plast. Sc.	3
	6	40-50-0405 Spring (Blue)	1
	7	43-76-0050 Housing	1
	8	44-66-1500 Mounting Plate	1
	9	06-81-2000 M4 x 0.7 x 8. lg, 2.5mm Skt. Hd. Flat Sc.	3
	10	44-66-0305 Curve Plate	1
	11	06-81-2005 M4 x 0.7 x 10. lg, 2.5mm Skt. Hd. Flat Sc.	1
	12	43-72-0010 Bit Holder	1
	13	43-56-0300 Spring Guide	1
★	14	43-76-0296 Adapter Assembly	1
	16	34-40-0700 O-Ring	2
	17	44-40-0575 Stop Nut	2
	18	48-30-1521 120mm #2 Phillips Bit (Not Shown)	1
18A	48-30-1526	120mm #2 Square Bit	1
	19	06-81-2010 M5 x 0.8 x 25. lg, 4mm Skt. Hd. Slid. Sc.	1
	20	43-62-1230 Handle	1
	21	06-81-2015 M5 x 0.8 x 25. lg, 3mm Skt. Hd. Slid. Sc.	1
	22	43-56-0305 Plastic Belt Guide (Incl. 23,24,25)	1
	23	43-56-0320 Belt Guide-Right	1
	24	43-56-0325 Belt Guide-Left	1
	25	06-95-1010 Assembly Guide Screw	2
	26	06-81-2020 M5 x 0.8 x 12 lg, 4mm Skt.1 Hd. Pan Sc.	1
	27	06-81-2025 M5 x 0.8, 3mm Socket Hd. Roller Screw	1

FIG.	PART NO.	DESCRIPTION OF PART	NO. REQ.
	28	44-60-1520 Pivot Pin	1
	29	42-74-0095 Gear Wheel Unit	1
★	30	43-46-0207 Depth Control, 1" to 2-1/4"	1
		49-96-4800 Hex Key Set-2, 2.5, 3 & 4mm (Not Shown)	1
		10-15-6100 Depth Label (Not Shown)	1
		12-25-1470 Warning Label (Not Shown)	1

FIG. NOTES:
9,11 Use Loctite 272 on screws.