



SERVICE PARTS LIST

BULLETIN NO.
54-42-5825

SPECIFY CATALOG NO. AND SERIAL NO. WHEN ORDERING PARTS		REVISED BULLETIN	DATE
DRYWALL POWER UNIT			May '98
CATALOG NO.	6705-20	SERIAL NUMBER	939A
		WIRING INSTRUCTION 58-01-1591	



EXAMPLE:
Component Parts (Small #) Are Included
When Ordering The Assembly (Large #).

**NOTE: 6705-21 Includes
Magazine Attachment
No. 48-05-1000.
See Reverse Side.**

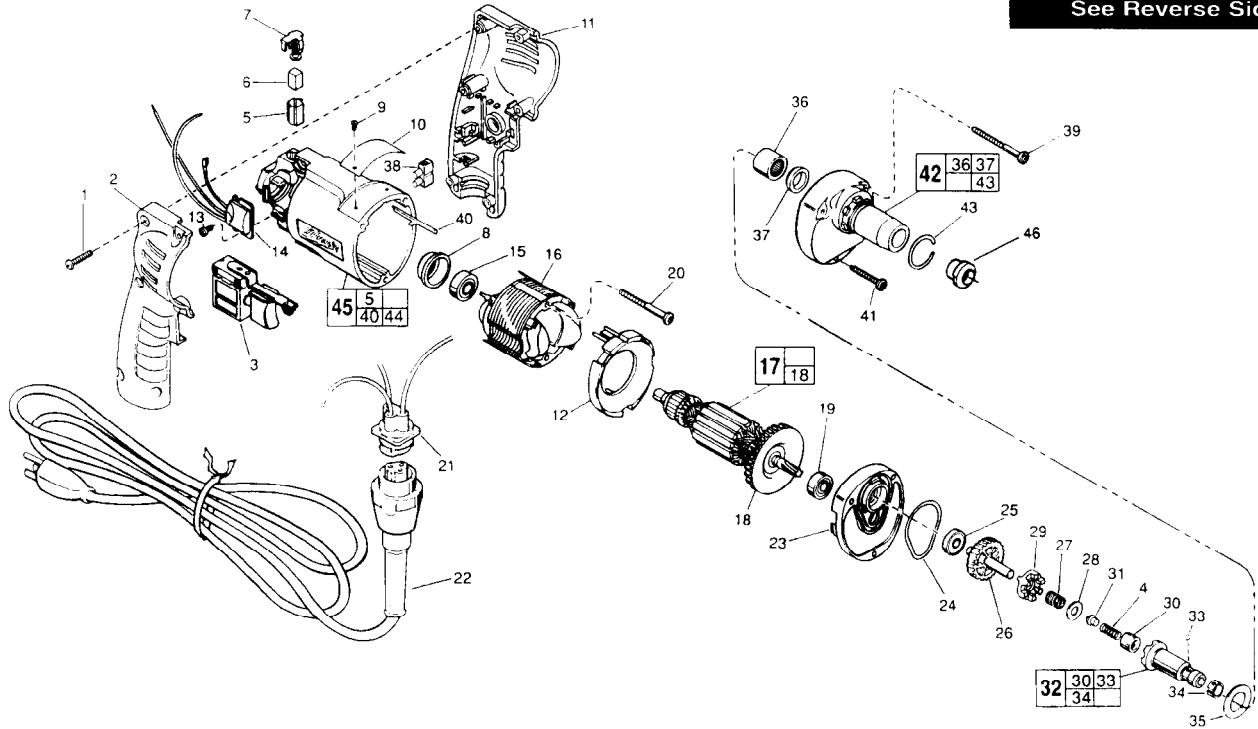


FIG.	PART NO.	DESCRIPTION OF PART	NO. REQ.
1	06-82-7284	8-16 x 3/4" Pan Hd. Plast. T-20	(6)
2	31-44-1845	Right Handle Half	(1)
3	23-66-2145	Switch	(1)
4	40-50-0095	Separator Spring	(1)
5	22-20-0830	Brush Tube	(2)
6	22-16-0275	Carbon Brush	(2)
7	23-52-1570	Brush Spring Assembly	(2)
8	22-72-0100	Bearing Cup	(1)
9	06-72-1720	Nameplate Rivet	(2)
10	12-99-0850	Service Nameplate	(1)
11	31-44-1840	Left Handle Half	(1)
12	42-14-0360	Baffle	(1)
13	06-82-7212	4-20 x 1/4" Pan Hd. Plast. T-10	(1)
14	14-20-0750	Remote Module Assembly	(1)
15	02-04-0645	Ball Bearing	(1)
16	18-11-0150	Field	(1)
17	16-10-0671	Armature Assembly	(1)
18	22-84-0840	Fan Assembly	(1)
19	02-04-0851	Ball Bearing	(1)
20	06-82-7393	7-18 x 2" Pan Hd. Slit. Plast. T-20	(2)
21	22-56-0808	Blade Housing	(1)
22	48-76-4008	Quik-Lok Cord Set	(1)
23	25-28-1990	Diaphragm	(1)
24	43-44-0940	Gasket	(1)
25	02-04-0645	Ball Bearing	(1)
26	32-10-1051	Clutch Gear Assembly	(1)
27	40-50-8515	Bias Spring	(1)
28	45-88-0555	Thrust Washer	(1)
29	42-70-0310	Drive Clutch	(1)
30	02-50-2400	Needle Bearing	(1)
31	44-60-0505	Thrust Pin	(1)
32	42-66-0710	Clutch Chuck Assembly	(1)
33	02-02-0130	9/64" Steel Ball	(1)
34	40-50-0510	Retaining Spring	(1)
35	45-88-8350	Stop Washer	(1)

FIG.	PART NO.	DESCRIPTION OF PART	NO. REQ.
36	02-50-4220	Needle Bearing	(1)
37	45-06-0570	Oil Seal	(1)
38	22-56-0456	Terminal Block	(1)
39	06-82-7368	7-18 x 1-3/4" Pan Hd. Slit. Plast. T-20	(2)
40	44-60-0530	Ground Pin	(1)
41	06-82-7320	7-18 x 1-1/4" Pan Hd. Slit. Plast. T-20	(1)
42	14-30-0435	Gear Case Assembly	(1)
43	44-90-0401	Locator Ring	(1)
44	23-94-6225	Ground Wire Assembly (Not Shown)	(1)
45	14-38-0601	Motor Housing Assembly	(1)
46	30-37-0046	Nose Guide	(1)

FIG. LUBRICATION

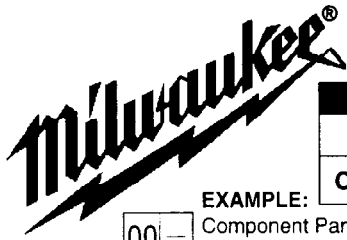
- 17,26,27 1/64 Oz. Type "E" Grease, No. 49-08-4122, On Bias Spring.
- 1/64 Oz. In The Clutch Pockets Of The Clutch Gear.
- 1/64 Oz. On Each Side Of Armature Pinion At Clutch Gear.
- 42 3/16 Oz. In Pinion Pocket Of Gear Case.

Apply A Light Film Of "E" Grease To Ball And Needle Bearing Pockets Of The Diaphragm And Gear Case Prior To Pressing Bearings. Apply A Light Film Of "E" Grease To The Lead Chamfer Of Clutch Chuck, Thrust Pin And Separator Spring Prior To Assembly.

FIG. NOTES

- 1 Torque To 18-28 In./Lbs.
- 20,41,39 Torque To 15-20 In./Lbs.
- 13 Torque To 3-5 In./Lbs.

MILWAUKEE ELECTRIC TOOL CORPORATION
13135 W. LISBON RD., BROOKFIELD, WI 53005



SERVICE PARTS LIST

BULLETIN NO.

SPECIFY CATALOG NO. AND SERIAL NO. WHEN ORDERING PARTS		REVISED BULLETIN	DATE
SCREW-SHOOTER MAGAZINE ATTACHMENT		WIRING INSTRUCTION	
CATALOG NO. 48-05-1000	STARTING SERIAL NO. 001016		

EXAMPLE:

00	0
----	---

 Component Parts (Small #) Are Included When Ordering The Assembly (Large #).

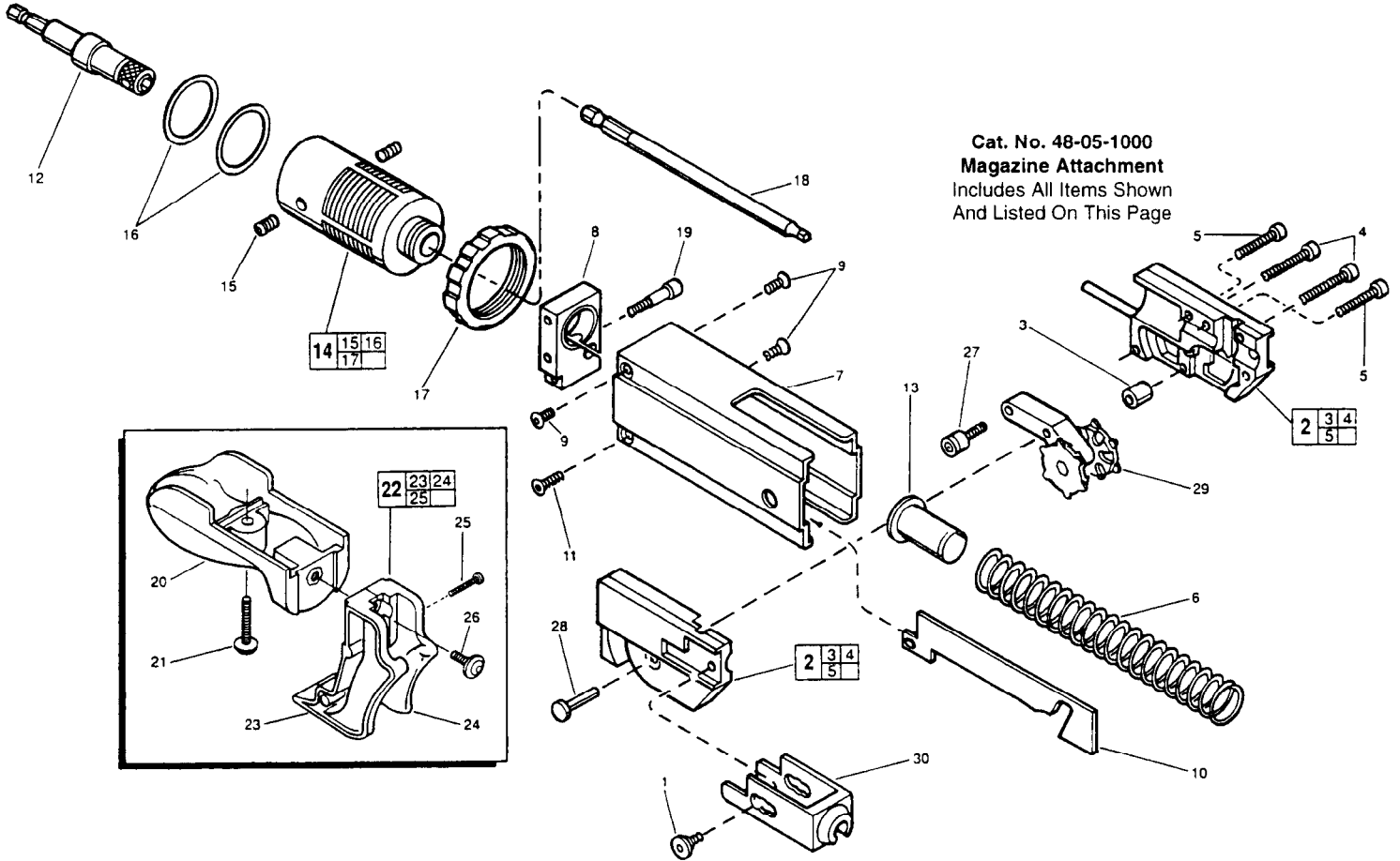


FIG.	PART NO.	DESCRIPTION OF PART	NO. REQ.
1	06-81-1700	M5 x 0.8 x 5. lg, 3mm Skt. Hd. Sld. Sc.	2
2	43-56-0310	Gliding Assembly	1
3	42-40-0001	Distance Bearing Bushing	1
4	06-95-1000	M3.5 x 22. lg, Phillips Pan Hd. Plast. Sc.	2
5	06-95-1005	M3.5 x 24. lg, Phillips Pan Hd. Plast. Sc.	2
6	40-50-0405	Spring (Blue)	1
7	43-76-0050	Housing	1
8	44-66-1500	Mounting Plate	1
9	06-81-2000	M4 x 0.7 x 8. lg, 2.5mm Skt. Hd. Flat Sc.	3
10	44-66-0305	Curve Plate	1
11	06-81-2005	M4 x 0.7 x 10. lg, 2.5mm Skt. Hd. Flat Sc.	1
12	43-72-0010	Bit Holder	1
13	43-56-0300	Spring Guide	1
14	43-76-0295	Adapter Assembly	1
15	06-83-1400	M6 x 1.0 x 6. lg, 3mm Socket Set Screw	2
16	34-40-0700	O-Ring	2
17	44-40-0575	Stop Nut	2
18	48-30-1521	120mm #2 Phillips Bit	1
18A	48-30-1526	120mm #2 Square Bit (Not Shown)	1
19	06-81-2010	M5 x 0.8 x 25. lg, 4mm Skt. Hd. Sld. Sc.	1
20	43-62-1230	Handle	1
21	06-81-2015	M5 x 0.8 x 25. lg, 3mm Skt. Hd. Sld. Sc.	1
22	43-56-0305	Plastic Belt Guide	1
23	43-56-0320	Belt Guide-Right	1
24	43-56-0325	Belt Guide-Left	1

FIG.	PART NO.	DESCRIPTION OF PART	NO. REQ.
25	06-95-1010	Assembly Guide Screw	2
26	06-81-2020	M5 x 0.8 x 12 lg, 4mm Skt.1 Hd. Pan Sc.	1
27	06-81-2025	M5 x 0.8, 3mm Socket Hd. Roller Screw	1
28	44-60-1520	Pivot Pin	1
29	42-74-0095	Gear Wheel Unit	1
30	43-46-0200	Depth Control, 1-5/8" to 2"	1
30A	43-46-0205	Depth Control, 1-1/4" to 1-1/2" (Not Shown)	1
	49-96-4800	Allen Key Set-2, 2.5, 3 & 4mm (Not Shown)	1
	10-15-6100	Depth Label (Not Shown)	1
	12-25-1470	Warning Label (Not Shown)	1
	12-25-1465	Presentation Label (Not Shown)	1

FIG. NOTES:
9,11 Use Loctite 272 on screws.

MILWAUKEE ELECTRIC TOOL CORPORATION
13135 W. LISBON RD., BROOKFIELD, WI 53005