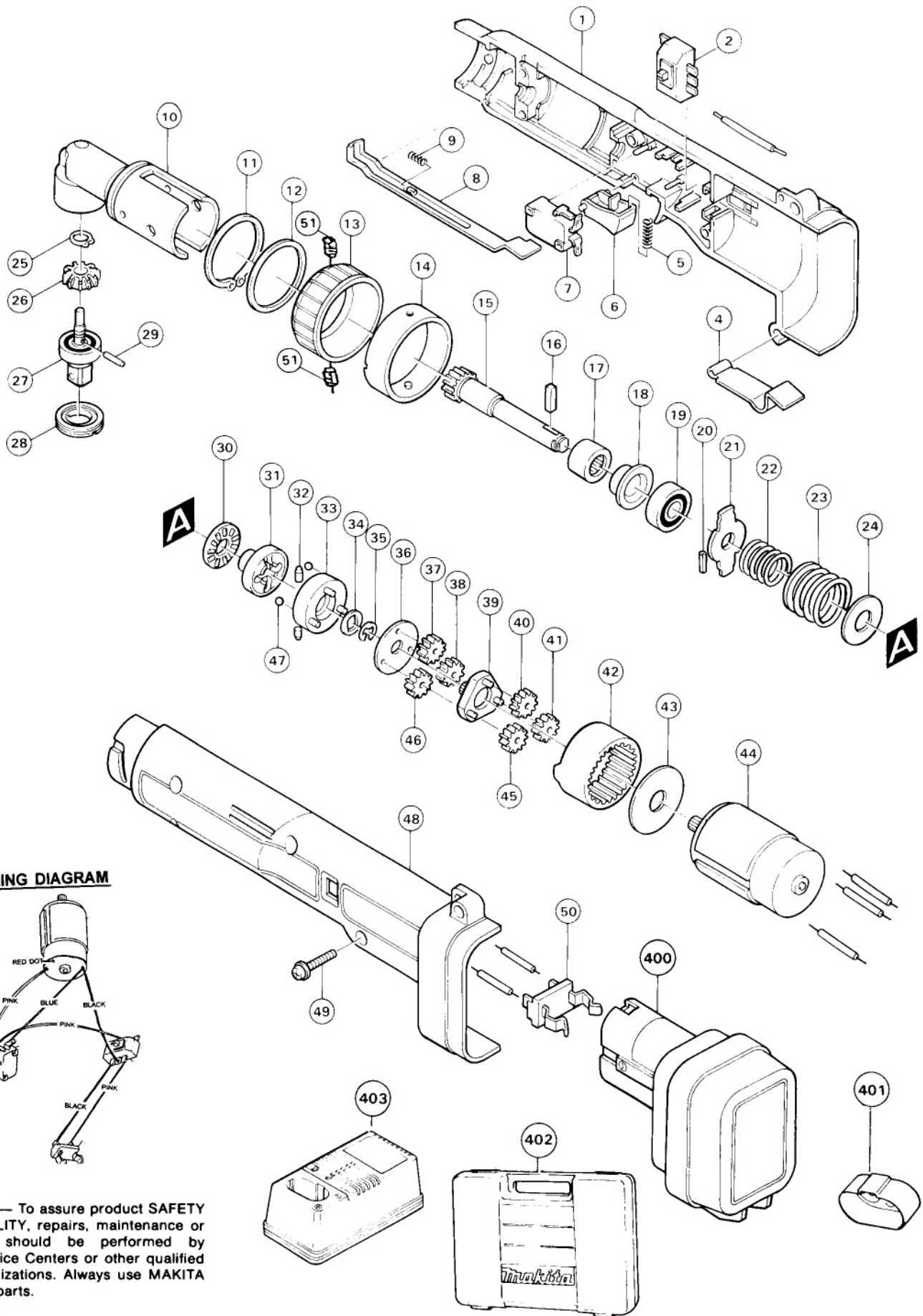


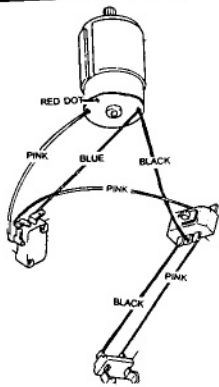


CORDLESS ANGLE SOCKET DRIVER

MODEL 6702D
MODEL 6702DW



WIRING DIAGRAM



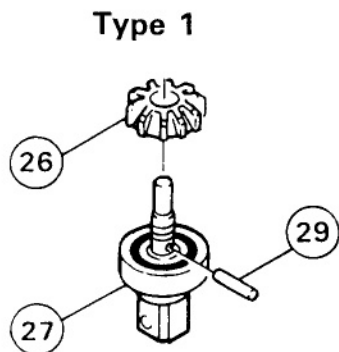
IMPORTANT — To assure product **SAFETY** and **RELIABILITY**, repairs, maintenance or adjustments should be performed by **MAKITA** Service Centers or other qualified service organizations. Always use **MAKITA** replacement parts.

Fig.	Part No.	Qty. Used	Description	Fig.	Part No.	Qty. Used	Description
1	***	1	HOUSING SET (Incl. Fig. 48)	31	322493-4	1	RETAINER
2	***	1	SWTCH	32	256217-5	2	PIN4
4	343579-1	1	SET PLATE	33	152399-0	1	HOLDER COMPLETE
5	233024-3	1	COMPRESSION SPRING 4	34	253998-2	1	LOCK WASHER 10
6	414752-1	1	SWITCH LEVER	35	343945-2	1	(U) PLATE
7	651900-3	1	SWTCH	36	343896-9	1	PLATE
8	343898-5	1	LEVER	37	226204-8	1	SPUR GEAR 28
9	233025-1	1	COMPRESSION SPRING 2	38	226204-8	1	SPUR GEAR 28
10	**	1	HEAD COMPLETE	39	153196-7	1	SPUR GEAR 11 COMPLETE
11	961172-5	1	RETAINING RINGS-34	40	226204-8	1	SPUR GEAR 28
12	267093-2	1	FLAT WASHER 34	41	226204-8	1	SPUR GEAR 28
13	**	1	CHANGING RING	42	226205-6	1	INTERNAL GEAR 67
14	152406-9	1	LOCK SLEEVE COMPLETE	43	267067-3	1	FLAT WASHER 12
15	221390-0	1	BEVEL GEAR 13	44	629624-9	1	DC MOTOR 9.6V (Incl. Spur Gear 11, 226235-7)
16	254235-7	1	KEY 4	45	226204-8	1	SPUR GEAR 28
17	212104-8	1	NEEDLE BEARING 1212	46	226204-8	1	SPUR GEAR 28
18	343798-9	1	SPACER	47	216013-3	2	STEEL BALL 6
19	211061-7	1	BALL BEARING 6000LLB	48	***	1	HOUSING SET (Incl. Fig. 11)
20	258002-2	2	SPRING PIN 3-6	49	911143-2	6	PAN HEAD SCREW M4X22
21	343897-7	1	SLIDE PLATE	50	643909-9	1	BATTERY HOLDER
22	233026-9	1	COMPRESSION SPRING 15	51	**	2	SCREW M4X6
23	233027-7	1	COMPRESSION SPRING 20	ACCESSORIES			
24	267024-1	1	FLAT WASHER 12	400	192019-4	1	BATTERY 9100
25	961023-2	1	RETAINING RINGS-7	401	414938-7	1	BATTERY COVER
26	*	1	BEVEL GEAR 14	402	182439-A	1	PLASTIC TOOL CASE
27	*	1	SPINDLE COMPLETE (Incl. Ball Bearing 608LLB, 211031-6)	403	113103-2	1	1 HOUR CHARGER DC9700
28	285671-6	1	BEARING RETAINER 13-23				
29	*	1	PIN 3				
30	216402-2	1	THRUST NEEDLE GAUGE 1224				

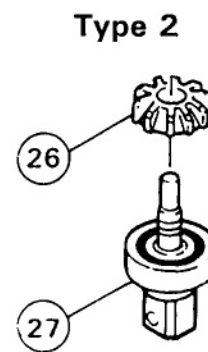
*SEE SERVICE CHANGE 1
**SEE SERVICE CHANGE 2
***SEE SERVICE CHANGE 3

SERVICE CHANGE

1. Change on Spindle.



Pin Hole on Fig. 26, 27



No Pin Hole.

FIG.	DESCRIPTION	TYPE 1	TYPE 2
26	Bevel Gear 14	Part #221391-8 (Discontinued)	Part #221391-8A
27	Spindle	Part #152400-1 (Discontinued)	Part #152400-1A
29	Pin 3	Part #256180-2	-----

The above parts are completely interchangeable as a set.

2. Change on Head Complete for Model 6702D from S/N 503633E; Model 6702DW.

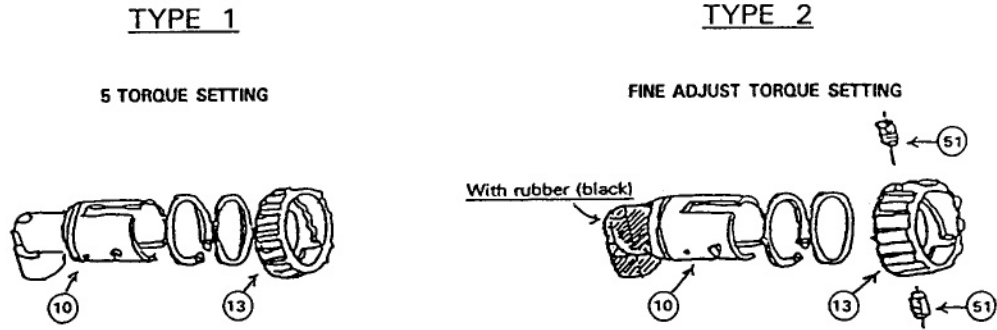


FIG	DESCRIPTION	TYPE 1	TYPE 2	TYPE 3
10	Head Complete	Part# 152402-7	Part# 152444-1 (Discontinued)	Part# 152558-6
13	Change Ring	Part# 414757-1	Part# 415444-5	-----
51	Screw M4x6	-----	Part# 266025-6	-----

The above parts are interchangeable as a set.

3. Change on Switch for Model 6702D form S/N 503633E; Model 6702DW.

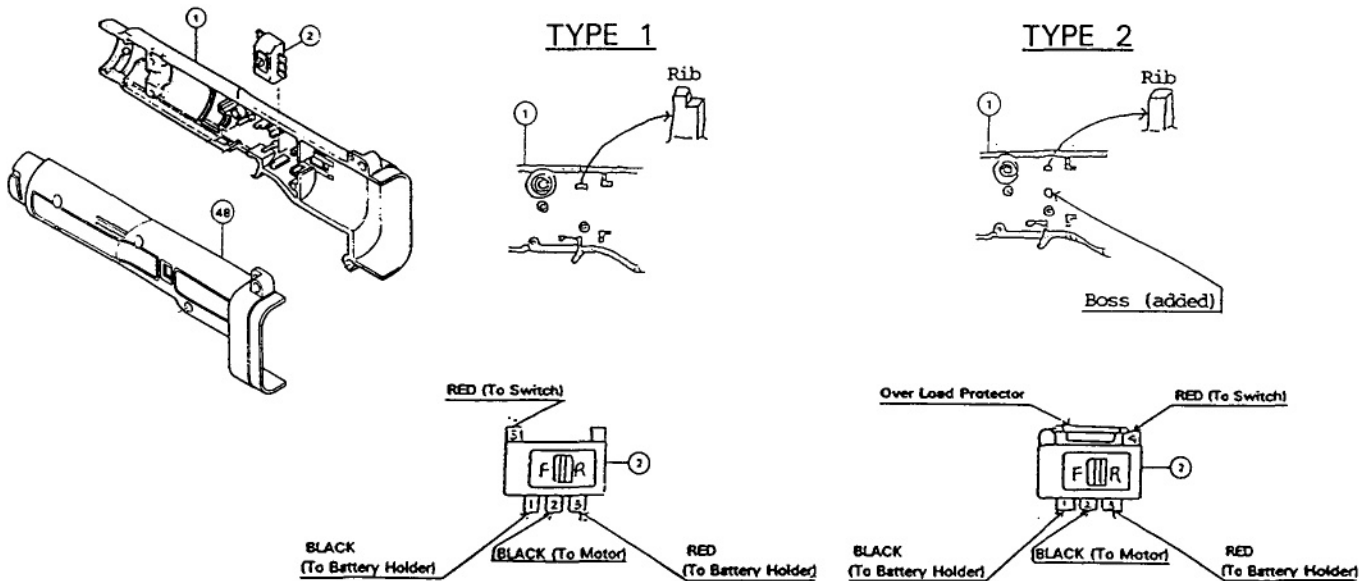


FIG.	DESCRIPTION	TYPE 1	TYPE 2	TYPE 3	TYPE 4	TYPE 5
1, 48	Housing Set	Part # 182441-3 (Discontinued)	Part # 182441-A (Discontinued)	Part # 182884-9 (Discontinued)	Part # 183044-6 (Discontinued)	Part # 183057-7
2	Switch	Part # 651889-5	Part # 651872-2	-----	-----	-----

The above parts are interchangeable as a set.