



SERVICE PARTS LIST

BUL. 54-42-2300

ADJUSTABLE TORQUE SCREWDRIVER

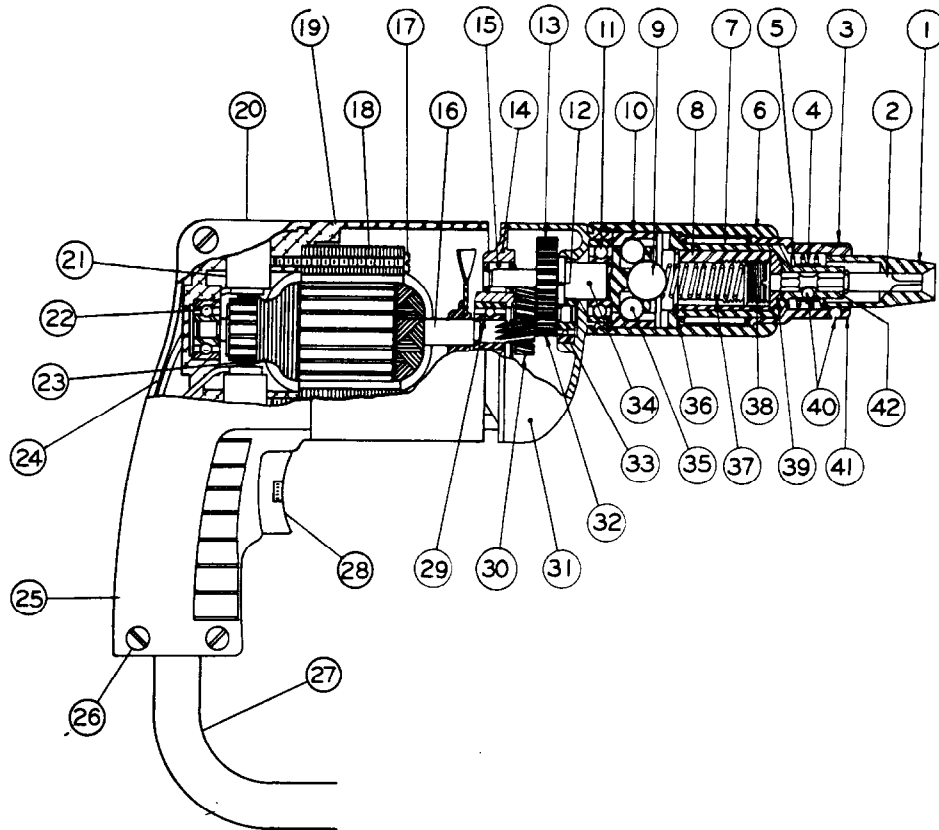
REVISED BUL DATE
May '68

Catalog No. 6611-1

Starting
Serial No. **424-1001**

WIRING INSTR.
58-01-0060

Both Model and Serial No. must be furnished to obtain correct parts.



ILLUSTRATED PARTS

FIG.	PART NO.	DESCRIPTION OF PART	FIG.	PART NO.	DESCRIPTION OF PART
1	Specify Size	Finder Sleeves	23	22-18-0360	Carbon Brush Assy. (2)
2	Specify Size	Hexagonal Bits	24	31-44-0111	Left Hand Handle Half
3	40-50-1800	Finder Retaining Spring	25	31-44-0100	Right Hand Handle Half
4	40-50-1400	Bit Retaining Spring	26	06-81-3650	8-32x3/4 Oval Hd. Handle Screw (4)
5	40-50-1900	Finder Spring	27	22-64-0450	Cord Set
6	45-22-0090	Sleeve	28	23-66-0520	Switch
7	02-50-6440	Needle Bearing	29	02-04-0880	Ball Bearing
8	43-84-0060	Threaded Insert	30	32-40-1041	Intermediate Gear
9	02-02-0560	9/16 Dia. Master Ball	31	28-14-0361	Gear Case
10	42-76-0100	Clutch Collar	32	36-66-3701	Intermediate Pinion Shaft
11	02-04-1020	Ball Bearing	33	02-04-0640	Ball Bearing
12	34-60-0600	Spindle Snap Ring	34	38-50-2251	Spindle
13	32-75-2441	Spindle Gear	35	02-02-0310	5/16 Dia. Driving Balls (3)
14	28-28-0221	Diaphragm	36	34-60-1700	Retaining Ring
15	02-50-1640	Needle Bearing	37	40-50-1500	Torque Limiting Spring (Heavy)
16	16-22-1231	Armature	37a	40-50-1600	Torque Limiting Spring (Medium)
17	06-81-5950	8-32x1-7/8 Fil.Hd. Field Screw (2)	37b	40-50-1700	Torque Limiting Spring (Light)
18	18-22-1121	Field	38	45-04-0090	Adjusting Screw
19	28-50-6091	Motor Housing	39	45-88-0200	Bit Backing Washer
20	23-44-0020	Brush Retaining Cap (2)	40	02-02-0150	Bit and Finder Retaining Ball (2)
21	22-22-0251	Brush Holder Assy. (2)	41	43-56-0060	Finder Guide
22	02-04-0740	Ball Bearing	42	42-66-0230	Chuck

MISCELLANEOUS PARTS NOT SHOWN

PART NO.	DESCRIPTION OF PART	PART NO.	DESCRIPTION OF PART
02-50-1210	Needle Bearing	12-98-0600	Name Plate
34-60-2060	Retaining Ring	06-42-0400	Woodruff Key
06-81-8625	6-32x1/4 Rd.Hd. Brass Ground Screw	06-42-0800	Woodruff Key
48-03-0010	Attachment Plug Adaptor	45-30-0120	Ball Bearing Retaining Slug
06-81-6550	8-32x1 1/2 Fil.Hd. Gear Case Screw Sem. (2)	06-81-4300	3-48x3/16 Rd Hd. Name Plate Screw (2)
06-81-6300	8-32x7/8 Fil.Hd. Gear Case Screw Sem.(2)	06-83-0100	10-32x 1/4 Brush Holder Set Screw (2)
06-81-3600	8-32x3/8 Oval Hd. Handle Mtg. Screw (4)		