



# SERVICE PARTS LIST

BUL. 54-42-2200

## SCREWDRIVER

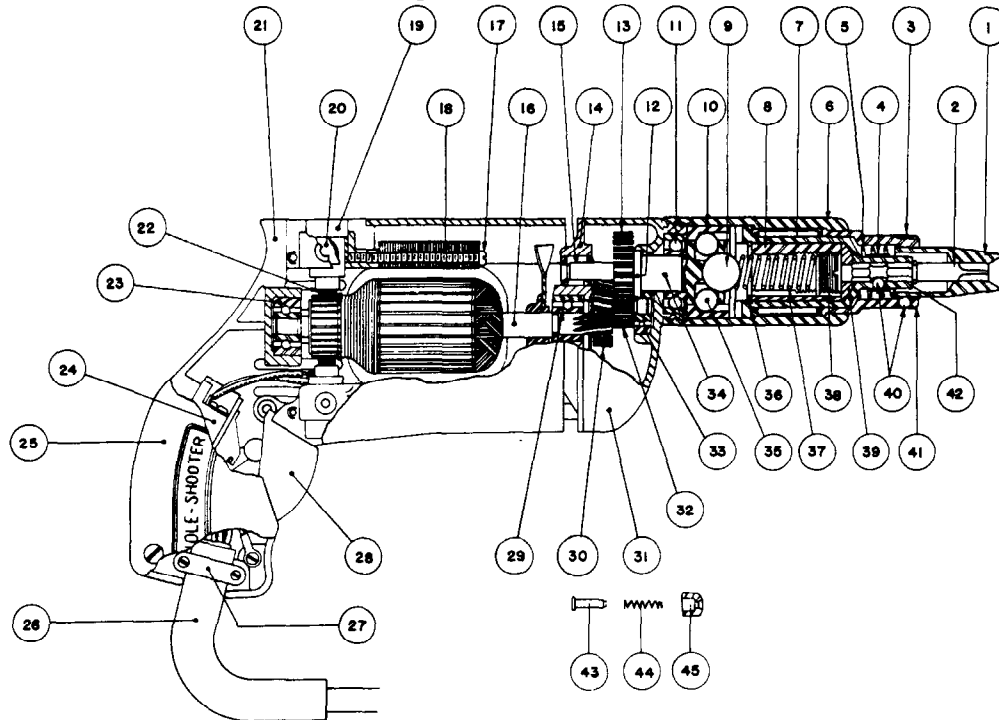
REVISED BUL 6138-1 DATE Feb. '68

MODEL NO. 615M

Starting Serial No. 138-1001

WIRING INSTR.

Both Model and Serial No. must be furnished to obtain correct parts.



### ILLUSTRATED PARTS

FIG.	PART NO.	DESCRIPTION OF PART	PRICE	FIG.	PART NO.	DESCRIPTION OF PART
1	Specify Size	Finder Sleeves	See Price List	25	3B1-1	Handle Cover
2	Specify Size	Hexagonal Bits	See Price List	26	18G-8SR2	Cord Set
3	6A22-1	Finder Retaining Spring		27	8B1-3	Cord Clamp
4	6A21-1	Bit Retaining Spring		28	3B1-2	Switch Trigger
5	6A22-2	Finder Spring		29	WC87037	Armature Ball Brg. (Pinion End)
6	6A-20	Sleeve		30	6A-14	Intermediate Gear
7	B-1616	Clutch Assembly Needle Brg.		31	3A-3C	Gear Case
8	6A21-2A	Threaded Insert		32	6A-13	Intermediate Pinion Shaft
9	9/16 Dia.	Master Ball		33	ND36	Pinion Shaft Ball Bearing
10	6A8-1	Clutch Collar		34	6A-8A	Spindle
11	93L00	Spindle Ball Brg.		35	5/16 Dia.	Driving Balls
12	XSO-219	Spindle Snap Ring		36	XRO-432	Retaining Ring
13	6A-111	Spindle Gear		37	6A21-4	Torque Limiting Spring (Normal)
14	3A-2C	Diaphragm		37a	6A21-5	Torque Limiting Spring (Light)
15	M-471	Spindle Needle Brg.		37b	6A21-7	Torque Limiting Spring (Heavy)
16	7B-600	Armature Assembly		38	6A21-3	Adjusting Screw
17	#6-32x1 1/4	Fil. Hd. Field Screws	(2)	39	6A21-6	Bit Backing Washer
18	8B-704	Field Assembly		40	5/32 Dia.	Bit and Finder Retaining Balls ea.
19	7B-320	Brush Holder Assembly		41	6A-22	Finder Guide
20	3A-40	Brush Retaining Cap	(2)	42	6A-21A	Chuck
21	3B-1A	Motor Housing		43	3B15-1	Trigger Lock Shaft
22	8B-370	Carbon Brush Assembly	(2)	44	3A15-4	Trigger Lock Spring
23	WC87037	Ball Bearing		45	3A15-2	Trigger Lock Button
24	8909K-209	Switch				

### MISCELLANEOUS PARTS NOT SHOWN

SIZE OR PART NO.	DESCRIPTION OF PART	SIZE OR PART NO.	DESCRIPTION OF PART
M-361	Int. Pinion Needle Bearing	#8-32x7/8 Fil. Hd.	Gear Case Screws (2)
#6-32x5/16 Fil. Hd.	Sem Switch Mounting Screw	#4x1/4 Driv-In	Name Plate Screws (2)
#8-32x3/4 Fil. Hd.	Handle Cover Screws (3)	615M-1	Name Plate
#10-32x1/4 Hd'less	Slotted Brush Holder Screws (2)	#201	Woodruff Key
#8-32x1/2 Fil. Hd.	Cord Clamp Screws	#207	Woodruff Key
#6-32x1/4 (Brass)	Rd. Hd.	3PA-1	Attachment Plug Adaptor
#8-32x1-3/8 Fil. Hd.	Gear Case Screws (2)		