



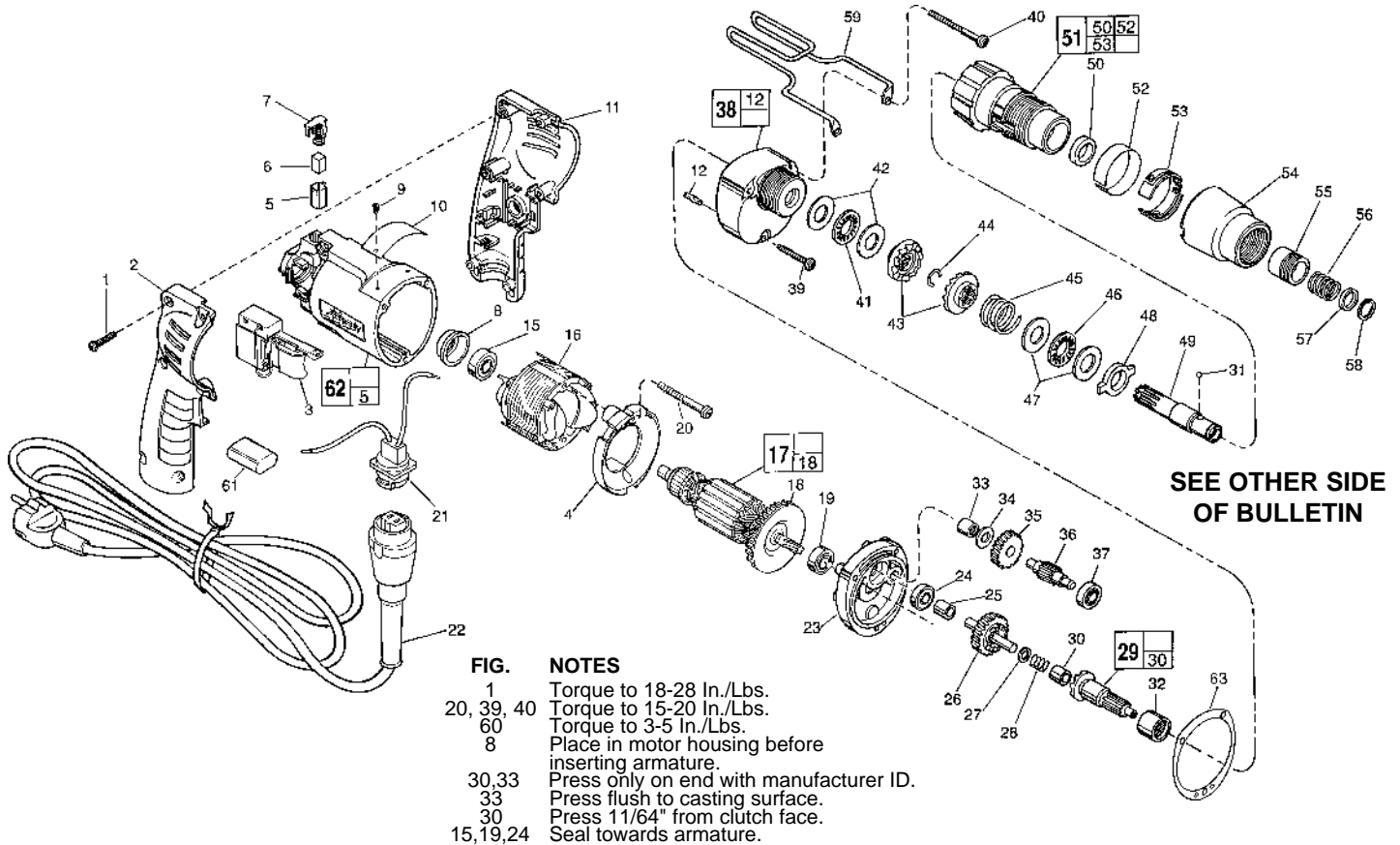
# SERVICE PARTS LIST

**BULLETIN NO.**  
**55-42-0411**

<b>SPECIFY CATALOG NO. AND SERIAL NO. WHEN ORDERING PARTS</b>		REVISED BULLETIN 55-42-0410	DATE Jan. 2000
<b>ADJUSTABLE TORQUE SCREWDRIVER</b>			
<b>CATALOG NO.</b> 6583-50	<b>STARTING SERIAL NO.</b>	<b>470B</b>	
		<b>WIRING INSTRUCTION</b> <b>58-03-0028</b>	

**EXAMPLE:**

Component Parts (Small #) Are Included  
When Ordering The Assembly (Large #).



**SEE OTHER SIDE  
OF BULLETIN**

**FIG. NOTES**

- 1 Torque to 18-28 In./Lbs.
- 20, 39, 40 Torque to 15-20 In./Lbs.
- 60 Torque to 3-5 In./Lbs.
- 8 Place in motor housing before inserting armature.
- 30, 33 Press only on end with manufacturer ID.
- 33 Press flush to casting surface.
- 30 Press 11/64" from clutch face.
- 15, 19, 24 Seal towards armature.

FIG.	PART NO.	DESCRIPTION OF PART	NO. REQ.	FIG.	PART NO.	DESCRIPTION OF PART	NO. REQ.
	1	06-82-7284	(6)	39	06-82-7344	7-18 x 1-1/2" Pan Hd. Slit. Plast. T-20	(1)
★	2	31-44-1845	(1)	40	06-82-7464	7-18 x 2-3/4" Pan Hd. Slit. Plast. T-20	(2)
	3	23-66-2075	(1)	41	02-80-1200	Thrust Bearing	(1)
★	3	4931 3648 01	(1)	42	45-88-0510	Thrust Bearing Washer	(2)
	4	42-14-0380	(1)	43	42-70-5016	Drive Clutch	(2)
	5	22-20-0830	(2)	44	34-60-0545	Retaining Ring	(1)
	6	22-16-0375	(2)	45	40-50-8000	Clutch Spring	(1)
	7	23-52-1570	(2)	46	02-80-6020	Thrust Bearing	(1)
	8	22-72-0100	(1)	47	45-88-7150	Thrust Bearing Washer	(2)
	9	06-72-1700	(2)	48	44-90-4280	Adjustment Ring	(1)
	10	12-77-2805	(1)	49	42-66-0676	Chuck Shaft	(1)
★	11	31-44-1840	(1)	50	45-06-0106	Oil Seal	(1)
	12	06-65-0825	(1)	51	14-08-0190	Clutch Housing Assembly	(1)
	15	02-04-0645	(1)	52	10-79-3100	Torque Setting Label	(1)
	16	18-12-0150	(1)	53	42-16-0140	Adjustment Band	(1)
	17	16-14-0680	(1)	54	42-76-0460	Adjustment Collar	(1)
	18	22-84-0880	(1)	55	42-76-0390	Locking Collar	(1)
	19	02-04-0851	(1)	56	40-50-8005	Compression Spring	(1)
	20	06-82-7203	(2)	57	45-36-1300	Spacer	(1)
★	21	22-56-0696	(1)	58	34-60-2390	Retaining Ring	(1)
★	22	48-76-5012	(1)	59	42-70-5080	Belt Clip	(1)
★	22	22-64-0684	(1)	61	14-20-0530	Suppressor Assembly	(1)
	23	28-28-1961	(1)	62	14-38-0591	Motor Housing Assembly	(1)
	24	02-04-0645	(1)	63	43-44-0925	Gasket	(1)
	25	45-36-1280	(1)				
	26	32-10-4050	(1)				
	27	45-88-0712	(1)				
	28	40-50-6600	(1)				
	29	14-73-0250	(1)				
	30	02-50-2400	(1)				
	31	02-02-0130	(1)				
	32	02-50-4225	(1)				
	33	02-50-2410	(1)				
	34	45-88-7990	(1)				
	35	32-40-1613	(1)				
	36	36-66-4096	(1)				
	37	02-04-0640	(1)				
	38	14-30-0600	(1)				

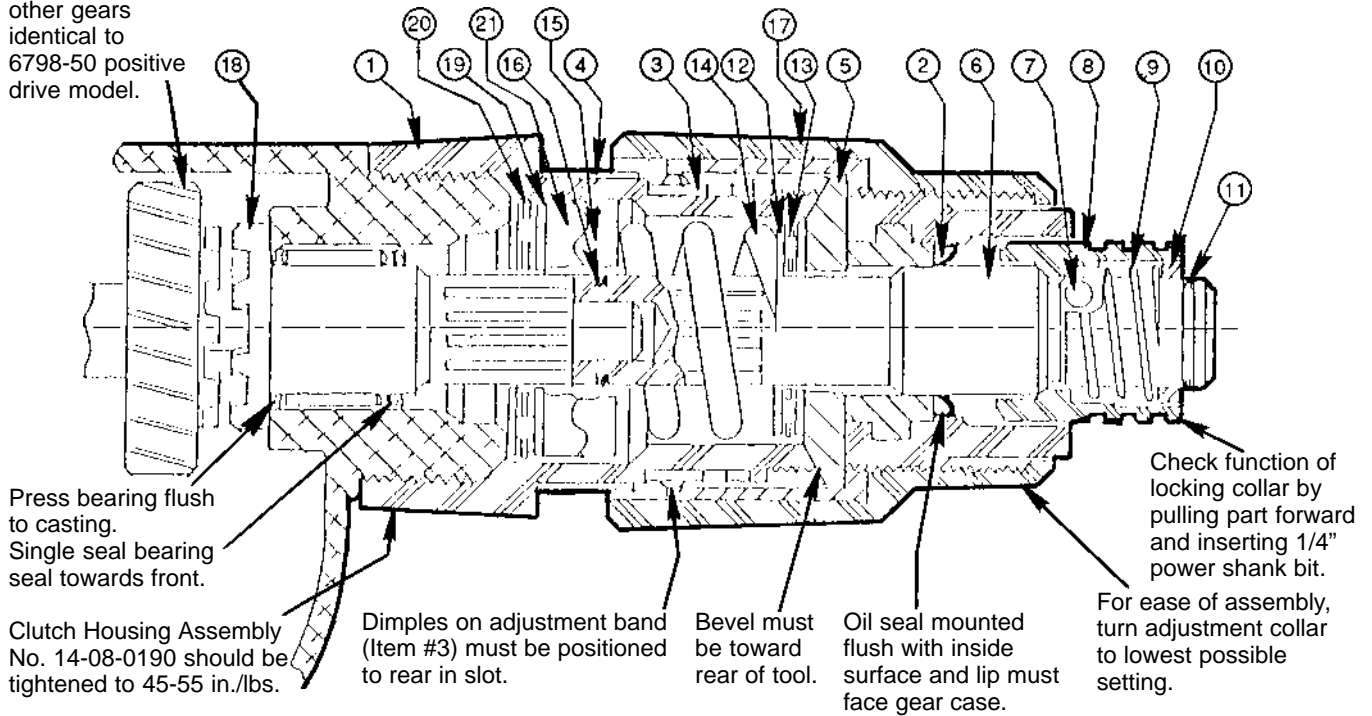
**FIG. LUBRICATION**

- 38 1-1/2 Oz. Type "E" Grease, No. 49-08-4122.
- 43 1/16 Oz. Type "F" Grease, No. 49-08-4160 On Clutch Faces.
- 41, 46, 50 Apply Small Amount Of Type "F" Grease, No. 49-08-4160.
- 48 Apply Small Amount Of Type "F" Grease, No. 49-08-4160, On Tabs.

**MILWAUKEE ELECTRIC TOOL CORPORATION**  
13135 W. LISBON RD., BROOKFIELD, WI 53005

**PARTS LIST IN ORDER OF ASSEMBLY  
ADJUSTABLE TORQUE SCREWDRIVER  
CAT. NO. 6583-50 AND 6783-50**

Clutch gear and other gears identical to 6798-50 positive drive model.



**LUBRICATION**

Apply 1/16 oz. Type "F" Grease on clutch faces of drive clutch (#15 & #21). Apply small amount of Type "F" Grease on thrust bearings (#13 & #20, oil seal lip #2 and tabs of adjustment ring #5).

Drive clutches must slide back and forth freely on shaft splines. Defective splines that stick will not function properly.

	ITEM NO.	PART NO.	DESCRIPTION		
<b>Clutch Housing Assembly No. 14-08-0190</b>	1	43-76-0550	Clutch Housing (Includes Bushing No. 42-40-0920)	} <b>Clutch Sub-Assembly</b>	
	2	45-06-0106	Oil Seal		
	3	42-16-0140	Adjustment Band		
<b>Sub-Assembly</b>	4	10-79-3100	Torque Setting Label		
	5	44-90-4280	Adjustment Ring		
	6	42-66-0676	Chuck Shaft		
	7	02-02-0130	Steel Ball		
	8	42-76-0390	Locking Collar		
	9	40-50-8005	Spring		
	10	45-36-1300	Spacer		
	11	34-60-2390	Retaining Ring		
	12	45-88-7150	Thrust Washers (2 each) (Place on each side of Item #13)		
	13	02-80-6020	Thrust Bearing		
	14	40-50-8000	Clutch Spring		
	15	42-70-5016	Drive Clutch		
	16	34-60-0545	Retaining Ring		
		17	42-76-0460		Adjustment Collar (Includes Insert No. 43-84-0740)
	18	14-73-0250	Clutch Shaft Assembly (Includes Clutch Shaft No. 36-14-0661 and Needle Bearing No. 02-50-2400)		
	19	45-88-0510	Thrust Bearing Washers (2 each) (Place on each side of Item #20)		
	20	02-80-1200	Thrust Bearing		
	21	42-70-5016	Drive Clutch		