



SERVICE PARTS LIST

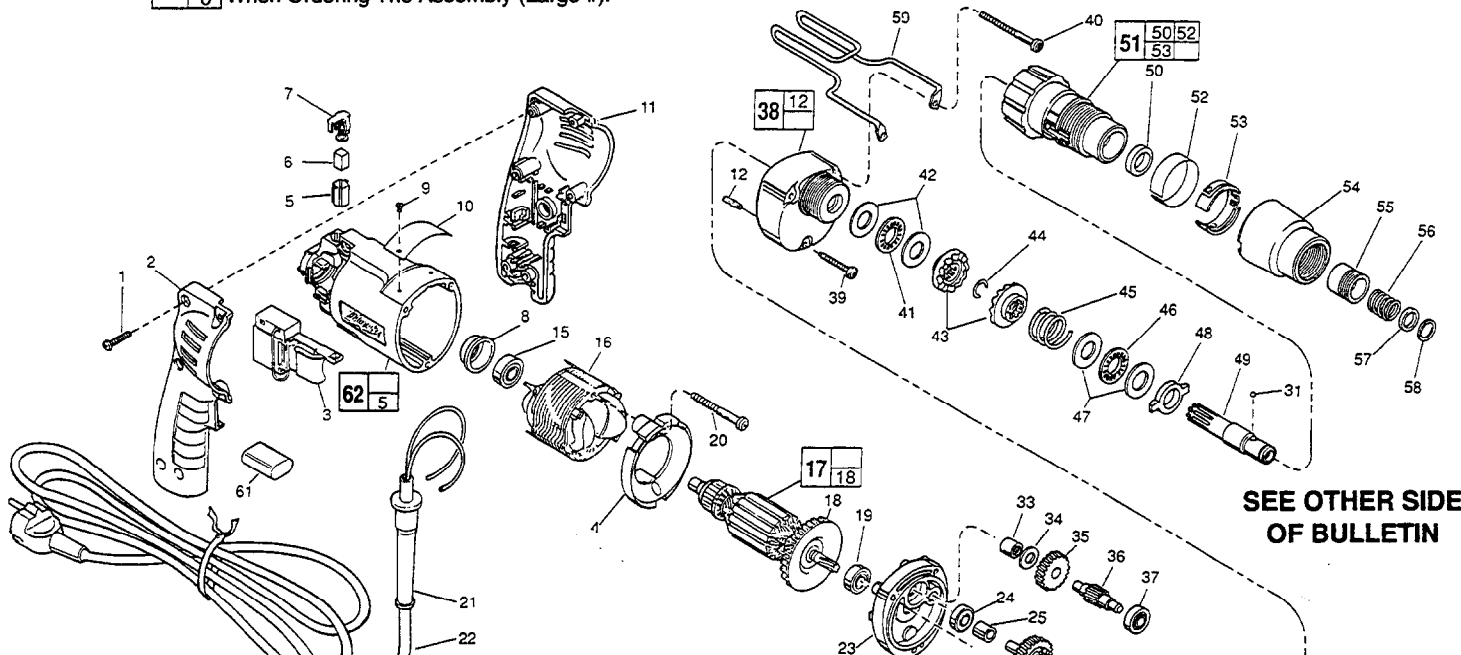
BULLETIN NO.
55-42-0410

SPECIFY CATALOG NO. AND SERIAL NO. WHEN ORDERING PARTS		REVISED BULLETIN	DATE
ADJUSTABLE TORQUE SCREWDRIVER			July '96
CATALOG NO. 6583-4	STARTING SERIAL NO. 470A	WIRING INSTRUCTION 58-03-0023	

EXAMPLE:

00	0
----	---

 Component Parts (Small #) Are Included
When Ordering The Assembly (Large #).



SEE OTHER SIDE OF BULLETIN

- FIG. NOTES**
- 1 Torque to 18-28 In./Lbs.
 - 20, 39, 40 Torque to 15-20 In./Lbs.
 - 60 Torque to 3-5 In./Lbs.
 - 8 Place in motor housing before inserting armature.
 - 30, 33 Press only on end with manufacturer ID.
 - 33 Press flush to casting surface.
 - 30 Press 11/64" from clutch face.
 - 15, 19, 24 Seal towards armature.

FIG.	PART NO.	DESCRIPTION OF PART	NO.	REQ.
1	06-82-7284	8-16 x 3/4" Pan Hd. St. Plast. T-20	(6)	
2	31-44-1745	Right Handle Half	(1)	
3	23-66-2145	Speed Control Switch	(1)	
4	42-14-0380	Baffle	(1)	
5	22-20-0830	Brush Tube	(2)	
6	22-16-0375	Carbon Brush	(2)	
7	23-52-1570	Brush Spring Assembly	(2)	
8	22-72-0100	Bearing Cup	(1)	
9	06-72-1720	Nameplate Rivet	(2)	
10	12-99-0570	Service Nameplate	(1)	
11	31-44-1740	Left Handle Half	(1)	
12	06-65-0825	1/8 x 1/2 Groove Pin No. 5	(1)	
15	02-04-0645	Ball Bearing	(1)	
16	18-12-0150	230 V. Field	(1)	
17	16-14-0680	230 V. Armature	(1)	
18	22-84-0880	Fan Assembly	(1)	
19	02-04-0851	Ball Bearing	(1)	
20	06-82-7203	7-18 x 2-1/8" Pan Hd. St. Plastite T-20	(2)	
21	44-76-0210	Cord Protector	(1)	
22	22-64-4535	Cord Set	(1)	
23	28-28-1961	Diaphragm	(1)	
24	02-04-0645	Ball Bearing	(1)	
25	45-36-1280	Spacer	(1)	
26	32-10-4050	Clutch Gear Assembly	(1)	
27	45-88-0712	Thrust Washer	(1)	
28	40-50-6600	Separator Spring	(1)	
29	14-73-0250	Clutch Shaft Assembly	(1)	
30	02-50-2400	Needle Bearing	(1)	
31	02-02-0130	Steel Ball	(1)	
32	02-50-4225	Needle Roller Bearing	(1)	
33	02-50-2410	Needle Bearing	(1)	
34	45-88-7990	Thrust Washer	(1)	
35	32-40-1613	Intermediate Gear	(1)	
36	36-66-4096	Intermediate Pinion Shaft	(1)	
37	02-04-0640	Ball Bearing	(1)	
38	14-30-0600	Gear Case Assembly	(1)	
39	06-82-7344	7-18 x 1-1/2" Pan Hd. St. Plast. T-20	(1)	

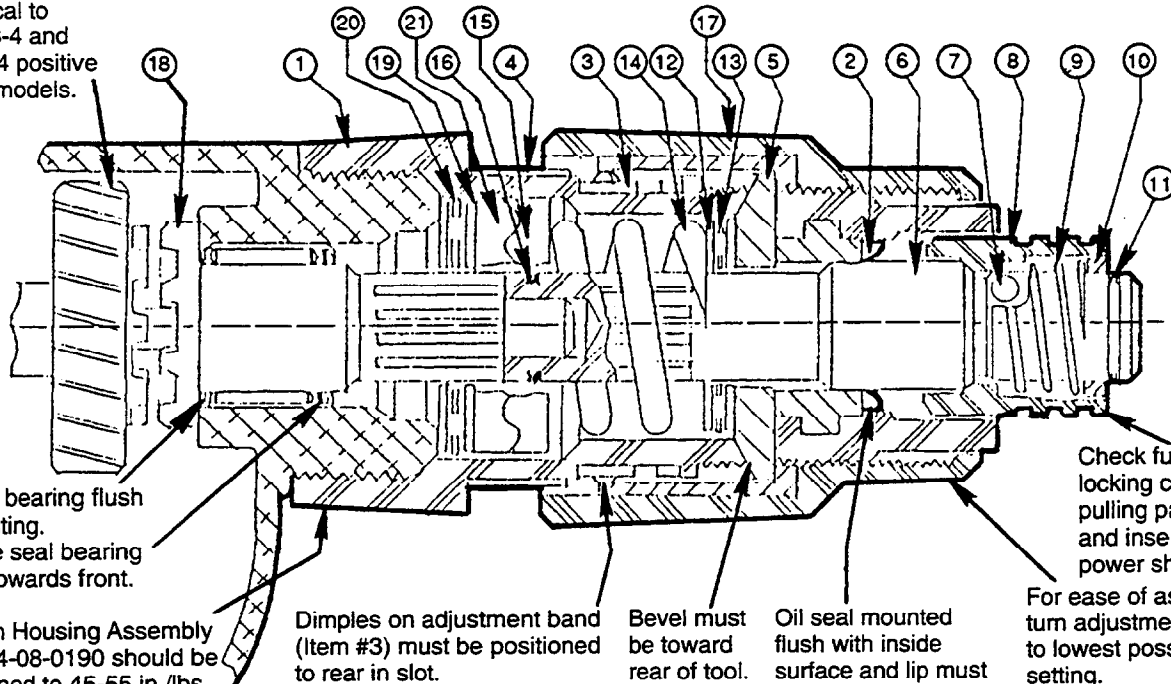
FIG.	PART NO.	DESCRIPTION OF PART	NO.	REQ.
40	06-82-7464	7-18 x 2-3/4" Pan Hd. St. Plast. T-20	(2)	
41	02-80-1200	Thrust Bearing	(1)	
42	45-88-0510	Thrust Bearing Washer	(2)	
43	42-70-5016	Drive Clutch	(2)	
44	34-60-0545	Retaining Ring	(1)	
45	40-50-8000	Clutch Spring	(1)	
46	02-80-6020	Thrust Bearing	(1)	
47	45-88-7150	Thrust Bearing Washer	(2)	
48	44-90-4280	Adjustment Ring	(1)	
49	42-66-0676	Chuck Shaft	(1)	
50	45-06-0106	Oil Seal	(1)	
51	14-08-0190	Clutch Housing Assembly	(1)	
52	10-79-3100	Torque Setting Label	(1)	
53	42-16-0140	Adjustment Band	(1)	
54	42-76-0460	Adjustment Collar	(1)	
55	42-76-0390	Locking Collar	(1)	
56	40-50-8005	Compression Spring	(1)	
57	45-36-1300	Spacer	(1)	
58	34-60-2390	Retaining Ring	(1)	
59	42-70-5080	Belt Clip	(1)	
61	14-20-0530	Suppressor Assembly	(1)	
62	14-38-0591	Motor Housing Assembly	(1)	
63	43-44-0925	Gasket	(1)	
	48-30-2600	Bit and Finder 1/4" Hex	(1)	
	48-30-2650	Bit and Finder 1/4" Hex	(1)	
	48-32-1050	Insert Bit 1/4" Hex	(1)	
	48-32-3050	Bit Holder 1/4" Hex	(1)	

- FIG. LUBRICATION**
- 38 1-1/2 Oz. Type "E" Grease, No. 49-08-4122.
 - 43 1/16 Oz. Type "F" Grease, No. 49-08-4160 On Clutch Faces.
 - 41, 46, 50 Apply Small Amount Of Type "F" Grease, No. 49-08-4160.
 - 48 Apply Small Amount Of Type "F" Grease, No. 49-08-4160, On Tabs.

MILWAUKEE ELECTRIC TOOL CORPORATION
13135 W. LISBON RD., BROOKFIELD, WI 53005

**PARTS LIST IN ORDER OF ASSEMBLY
ADJUSTABLE TORQUE SCREWDRIVER
CAT. NO. 6583-4 AND 6783-4**

Clutch gear and other gears identical to #6543-4 and 6798-4 positive drive models.



Press bearing flush to casting. Single seal bearing seal towards front.

Clutch Housing Assembly No. 14-08-0190 should be tightened to 45-55 in./lbs.

Dimples on adjustment band (Item #3) must be positioned to rear in slot.

Bevel must be toward rear of tool.

Oil seal mounted flush with inside surface and lip must face gear case.

Check function of locking collar by pulling part forward and inserting 1/4" power shank bit.

For ease of assembly, turn adjustment collar to lowest possible setting.

LUBRICATION

Apply 1/16 oz. Type "F" Grease on clutch faces of drive clutch (#15 & #21). Apply small amount of Type "F" Grease on thrust bearings (#13 & #20, oil seal lip #2 and tabs of adjustment ring #5).

Drive clutches must slide back and forth freely on shaft splines. Defective splines that stick will not function properly.

	ITEM NO.	PART NO.	DESCRIPTION		
Clutch Housing Assembly No. 14-08-0190	1	43-76-0550	Clutch Housing (Includes Bushing No. 42-40-0920)	} Clutch Sub-Assembly	
	2	45-06-0106	Oil Seal		
	3	42-16-0140	Adjustment Band		
	4	10-79-3100	Torque Setting Label		
	5	44-90-4280	Adjustment Ring		
	6	42-66-0676	Chuck Shaft		
	Sub-Assembly	7	02-02-0130		Steel Ball
		8	42-76-0390		Locking Collar
		9	40-50-8005		Spring
		10	45-36-1300		Spacer
		11	34-60-2390		Retaining Ring
		12	45-88-7150		Thrust Washers (2 each) (Place on each side of Item #13)
		13	02-80-6020		Thrust Bearing
		14	40-50-8000		Clutch Spring
		15	42-70-5016		Drive Clutch
		16	34-60-0545		Retaining Ring
	17	42-76-0460	Adjustment Collar (Includes Insert No. 43-84-0740)	} Not In Order Of Assembly	
	18	14-73-0250	Clutch Shaft Assembly (Includes Clutch Shaft No. 36-14-0661 and Needle Bearing No. 02-50-2400)		
	19	45-88-0510	Thrust Bearing Washers (2 each) (Place on each side of Item #20)		
	20	02-80-1200	Thrust Bearing		
	21	42-70-5016	Drive Clutch		