

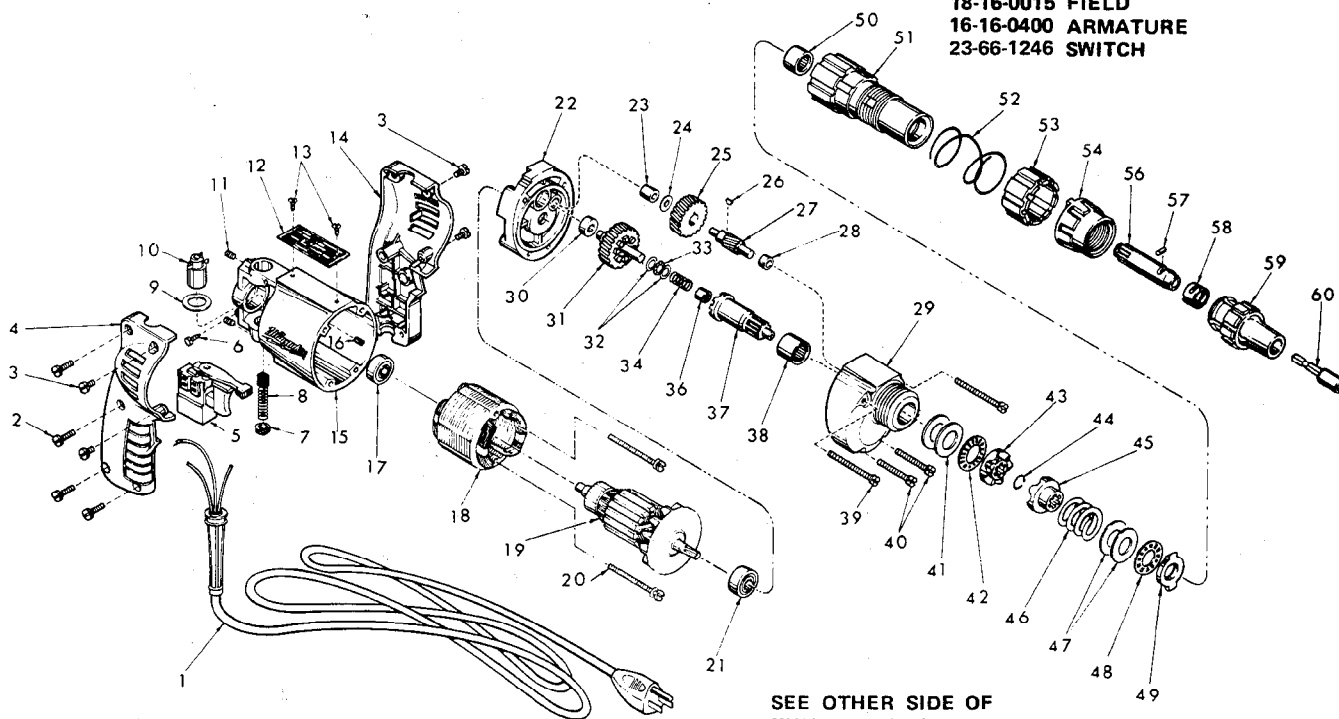


SERVICE PARTS LIST

**BULLETIN NO.
54-42-0403**

| | | | |
|--|--------------------------------------|---|-------------------|
| SPECIFY CATALOG NO. AND SERIAL NO. WHEN ORDERING PARTS | | REVISED BULLETIN 54-42-0402 | DATE April '85 |
| ADJUSTABLE CLUTCH REV. SCREW DRIVER | | | |
| CATALOG NO. 6583-1 | STARTING SERIAL NO. 470-20000 | WIRING INSTRUCTION 58-01-0653 | |
| CAT. NO. 6583-6 | START SER. NO. 470-20000 | BILINGUAL LABEL 10-98-6405 | |

FOR CAT. NO. 6583-3 (240V) TOOL USE:
22-64-4200 CORD SET
22-18-0376 CARBON BRUSH
18-16-0015 FIELD
16-16-0400 ARMATURE
23-66-1246 SWITCH



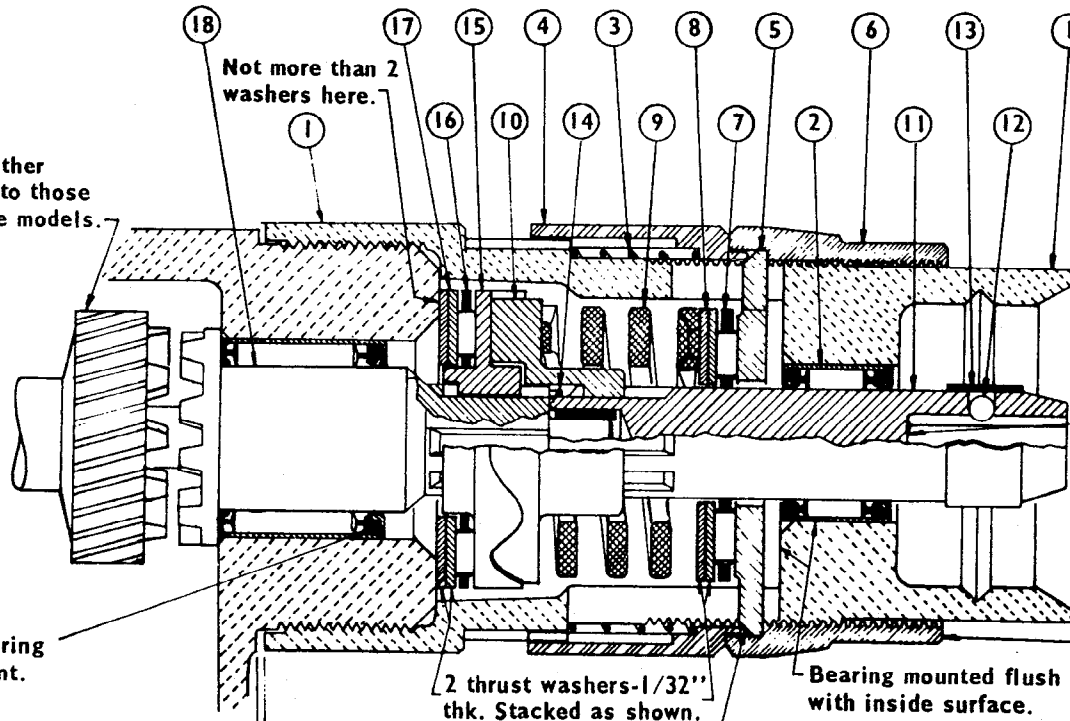
SEE OTHER SIDE OF
THIS BULLETIN

| FIG. | PART NO. | DESCRIPTION OF PART | NO. REQ. | FIG. | PART NO. | DESCRIPTION OF PART | NO. REQ. |
|------|----------|---------------------|----------|------|----------|---------------------|--|
| | 1 | 22-64-0665 | (1) | | 33 | 02-80-0100 | Thrust Bearing (1) |
| ★ | 2 | 06-95-0220 | (4) | | 34 | 40-50-6600 | Separator Spring (1) |
| ★ | 3 | 06-95-0209 | (4) | | 35 | 36-14-0675 | Clutch Shaft Assembly (Includes Fig. Nos. 36 & 37) (1) |
| ★ | 4 | 31-44-1360 | (1) | | 36 | 02-50-1610 | Needle Bearing (1) |
| ★ | 5 | 23-66-1240 | (1) | | 37 | 36-14-0660 | Clutch Shaft (1) |
| | 6 | 06-81-8625 | (1) | | 38 | 02-50-4035 | Needle Bearing (1) |
| | 7 | 23-44-0020 | (2) | | 39 | 06-81-6740 | 8-32x2 Fil. Hd. Sem (2) |
| | 8 | 22-18-0362 | (2) | | 40 | 06-81-6550 | 8-32x1-1/2 Fil. Hd. Sem (2) |
| | 9 | 23-86-0105 | (2) | | 41 | 45-88-0510 | Thrust Washer (2) |
| | 10 | 22-22-1251 | (2) | | 42 | 02-80-1210 | Thrust Bearing (1) |
| | 11 | 06-83-2430 | (2) | | 43 | 42-70-5015 | Drive Clutch (1) |
| ★ | 12 | 12-99-0019 | (1) | | 44 | 34-60-0545 | Retaining Ring (1) |
| | 13 | 06-85-0200 | (2) | | 45 | 42-70-5025 | Driven Clutch (1) |
| ★ | 14 | 31-44-1355 | (1) | | 46 | 40-50-1010 | Compression Spring (1) |
| ★ | 15 | 28-50-6096 | (1) | | 47 | 45-88-7150 | Thrust Washer (2) |
| | 16 | 45-30-0120 | (1) | | 48 | 02-80-6020 | Thrust Bearing (1) |
| | 17 | 02-04-0740 | (1) | | 49 | 42-05-0010 | Adjustment Ring (1) |
| ★ | 18 | 18-10-0025 | (1) | | 50 | 02-50-3225 | Needle Bearing (1) |
| | 19 | 16-10-0590 | (1) | | 51 | 28-50-2000 | Clutch Housing (1) |
| | 20 | 06-81-5950 | (2) | | 52 | 40-50-0910 | Spring (1) |
| | 21 | 02-04-0880 | (1) | | 53 | 31-58-0030 | Locking Collar (1) |
| | 22 | 28-28-1451 | (1) | | 54 | 42-05-0040 | Adjusting Ring (1) |
| | 23 | 02-50-1210 | (1) | | 55 | 42-66-0675 | Chuck Shaft Assembly (Includes Fig. Nos. 56 thru 58) (1) |
| | 24 | 45-88-7280 | (1) | | 56 | 42-66-0670 | Chuck Shaft (1) |
| | 25 | 32-40-1611 | (1) | | 57 | 02-55-0150 | Loose Roller Bearing (1) |
| | 26 | 06-42-0400 | (1) | | 58 | 40-50-1450 | Bit Retaining Spring (1) |
| | 27 | 36-66-4095 | (1) | | 59 | 48-32-0250 | 1/4 Bit Guide (1) |
| | 28 | 02-50-1635 | (1) | | 60 | 48-32-3050 | 1/4 Hex Bit Holder (1) |
| | 29 | 28-14-1210 | (1) | ★ | 61 | 10-98-5986 | Warning Label (Not Shown) (1) |
| | 30 | 02-08-0210 | (1) | | | | Omit For Canadian Tools |
| | 31 | 32-10-1000 | (1) | | | | |
| | 32 | 45-88-0550 | (2) | | | | |

PARTS LISTED IN ORDER OF ASSEMBLY

| ITEM NO. | PART NO. | DESCRIPTION | |
|----------|------------|------------------------|--------------------------|
| 1 | 28-50-2000 | CLUTCH HOUSING | CLUTCH SUB-ASSEMBLY |
| 2 | 02-50-3225 | SEALED ROLLER BEARING | |
| 3 | 40-50-0910 | SPRING | |
| 4 | 31-58-0030 | LOCKING COLLAR | |
| 5 | 42-05-0010 | ADJUSTMENT RING | |
| 6 | 42-05-0040 | ADJUSTING RING | |
| 7 | 02-80-6020 | THRUST BEARING | |
| 8 | 45-88-7150 | THRUST WASHERS (2 ea.) | |
| 9 | 40-50-1010 | COMPRESSION SPRING | |
| 10 | 42-70-5025 | DRIVEN CLUTCH | |
| 11 | 42-66-0670 | CHUCK SHAFT | |
| 12 | 02-55-0150 | LOOSE ROLLER BNG. | |
| 13 | 40-50-1450 | BIT RETAINING SPRING | |
| 14 | 34-60-0840 | RETAINING RING | |
| 15 | 42-70-5015 | DRIVE CLUTCH | NOT IN ORDER OF ASSEMBLY |
| 16 | 02-80-1210 | THRUST BEARING | |
| 17 | 45-88-0510 | THRUST WASHERS (2 ea.) | |
| 18 | 36-14-0660 | CLUTCH SHAFT | |

Clutch gear & other gears identical to those in positive drive models.



1/4" hex bits, when installed, should move back & forth freely for about 1/8". If bit jams or sticks near bottom, replace 42-66-0670 chuck shaft.

For ease of assembly, turn adjusting ring to lowest possible setting.

Single seal bearing seal toward front.

1/32" space is normal - if greater, thrust washer may be caught between clutch housing and gear case.

2 thrust washers - 1/32" thk. Stacked as shown.

Bearing mounted flush with inside surface.

Bevel must be toward rear of tool - ground surface toward front.

Wavy clutch splines must slide back & forth freely on shaft splines. Defective splines that stick will not allow proper functioning.

LUBRICATION

Apply 1/2 tsp. type A grease on wavy surface of item 15 and small amount on thrust bearings, items 7 & 16. Gear case lub. same as all other screwdrivers.