

SERVICE PARTS LIST

BULLETIN NO.
55-42-6000

SPECIFY CATALOG NO. AND SERIAL NO. WHEN ORDERING PARTS		REVISED BULLETIN	DATE
ADJUSTABLE TORQUE SCREWDRIVER			Apr. 2002
CATALOG NO. 6580-50	STARTING SERIAL NO. 098A	WIRING INSTRUCTION 58-03-1805	

EXAMPLE:
Component Parts (Small #)
Are Included When Ordering
The Assembly (Large #).

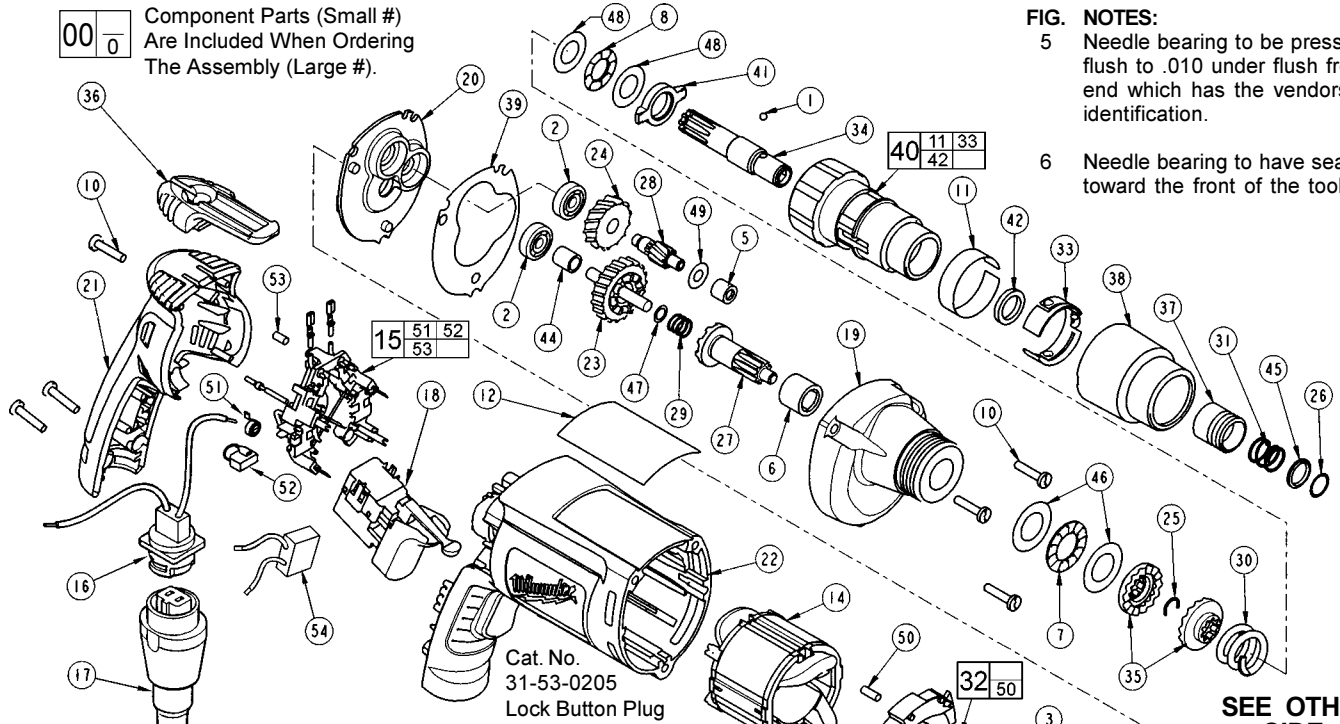


FIG. NOTES:
5 Needle bearing to be pressed flush to .010 under flush from end which has the vendors identification.
6 Needle bearing to have seal toward the front of the tool.

SEE OTHER SIDE OF BULLETIN

Before assembly, lightly coat all press fit areas with lightweight spindle oil.

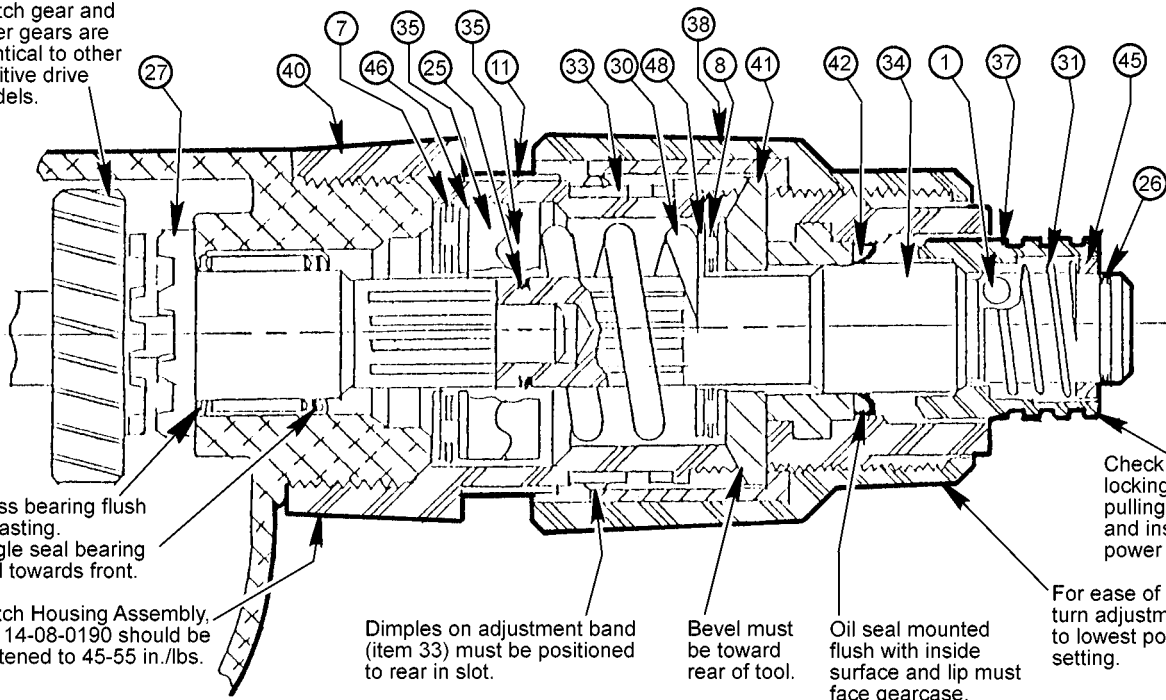
FIG.	PART NO.	DESCRIPTION OF PART	NO. REQ.
1	02-02-0130	Steel Ball	(1)
2	02-04-0640	Ball Bearing	(2)
3	02-04-0645	Ball Bearing	(1)
4	02-04-0852	Ball Bearing	(1)
5	02-50-2400	Needle Bearing	(1)
6	02-50-3245	Needle Roller Bearing	(1)
7	02-80-1200	Thrust Needle Bearing	(1)
8	02-80-6020	Thrust Bearing	(1)
9	22-84-0845	Fan Assembly	(1)
10	06-82-7275	7-18 x 3/4 Slotted Plastite Torx T-20	(6)
11	10-79-3100	Torque Setting Label	(1)
12	12-99-2695	Service Nameplate	(1)
13	16-14-2205	Armature	(1)
14	18-04-2200	Field	(1)
15	22-18-1220	Brush Card Assembly	(1)
16	22-56-1015	Blade Housing Assembly	(1)
17	48-76-5012	Quik-Lok Cord Set	(1)
17	22-64-0684	Quik-Lok Cord Set (Australia)	(1)
18	23-66-2135	Switch	(1)
19	28-14-2405	Gearcase	(1)
20	28-28-2315	Diaphragm	(1)
21	31-15-2030	Handle Halve	(1)
22	31-50-2030	Motor Housing	(1)
23	32-10-4055	Clutch Gear Assembly	(1)
24	32-40-0100	Intermediate Gear	(1)
25	34-60-0545	Retaining Ring	(1)
26	34-60-2390	Retaining Ring	(1)
27	36-14-0665	Clutch Shaft Assembly	(1)
28	36-66-0105	Intermediate Shaft	(1)
29	40-50-6600	Separator Spring	(1)
30	40-50-8000	Clutch Spring	(1)
31	40-50-8005	Compression Spring	(1)
32	42-14-0460	Baffle Assembly	(1)
33	42-16-0140	Adjustment Band	(1)
34	42-66-0676	Chuck Shaft	(1)
35	42-70-5016	Drive Clutch	(2)
36	42-70-5280	Belt Clip	(1)
37	42-76-0390	Locking Collar	(1)
38	42-76-0460	Adjustment Collar	(1)
39	43-44-0985	Gasket	(1)
40	14-08-0190	Clutch Housing Assembly	(1)
41	44-90-4280	Adjustment Ring	(1)

FIG.	PART NO.	DESCRIPTION OF PART	NO. REQ.
42	45-06-0106	Oil Seal	(1)
44	45-36-1280	Spacer	(1)
45	45-36-1300	Spacer	(1)
46	45-88-0510	Thrust Bearing Washer	(2)
47	45-88-0712	Thrust Washer	(1)
48	45-88-7150	Thrust Washer	(2)
49	45-88-7990	Thrust Washer	(1)
50	45-30-0030	Slug	(2)
51	23-52-1610	Brush Spring	(2)
52	22-18-1320	Brush Assembly	(2)
53	45-30-0035	Slug	(1)
54	22-33-0550	Suppressor	(1)

FIG. LUBRICATION:
7,8, 41,42 Apply a small amount of "L" Grease, No. 49-08-4170 on the thrust bearings, oil seal and tabs of the adjustment ring.
27 Apply a light film of "L" Grease to the lead chamfer of clutch chuck prior to assembly.
35 Place .07 oz. (1.8 grams) of Type "L" Grease on the clutch faces.
5 Place .12 oz. (3 grams) of Type "Y" Grease, No. 49-08-5270 on top of the inserted intermediate bearing.
19 Place .54 oz. (13.6 grams) of Type "Y" Grease at the armature pinion centerline in the gearcase and fill to slightly above the intermediate gear.

MILWAUKEE ELECTRIC TOOL CORPORATION
13135 W. LISBON RD., BROOKFIELD, WI 53005
Drwg. 2

Clutch gear and other gears are identical to other positive drive models.



Lubrication

Drive clutches must slide back and forth freely on shaft splines. Defective splines that stick will not function properly.

Apply 1/16 oz. Type "L" grease, No. 49-08-4170, on clutch faces of drive clutch (#35). Apply a small amount of "L" grease on thrust bearings (#7 and #8), oil seal lip (#42) and tabs of adjustment ring (#41).

ORDER OF ASSEMBLY	ITEM NUMBER	PART NUMBER	DESCRIPTION
Clutch Housing Assembly No. 14-08-0190	1	40	14-08-0190
	2	42	45-06-0106
	3	33	42-16-0140
	4	11	10-79-3100
	5	41	44-90-4280
	6	34	42-66-0676
Sub-Assembly	7	1	02-02-0130
	8	37	42-76-0390
	9	31	40-50-8005
	10	45	45-36-1300
	11	26	34-60-2390
	12	48	45-88-7150
	13	8	02-80-6020
	14	30	40-50-8000
	15	35	42-70-5016
	16	25	34-60-0545
	38	42-76-0460	Adjustment Collar (Includes insert No. 43-84-0740)
	27	36-14-0665	Clutch Shaft Assembly
	46	45-88-0510	Thrust Bearing Washers (2 each) (Place on each side of Item #7, Thrust Bearing)
	7	02-80-1200	Thrust Bearing
	35	42-70-5016	Drive Clutch

Clutch Sub-Assembly

Not In Order Of Assembly