



# SERVICE PARTS LIST

BUL. 54-42-2013

## SCREWDRIVER

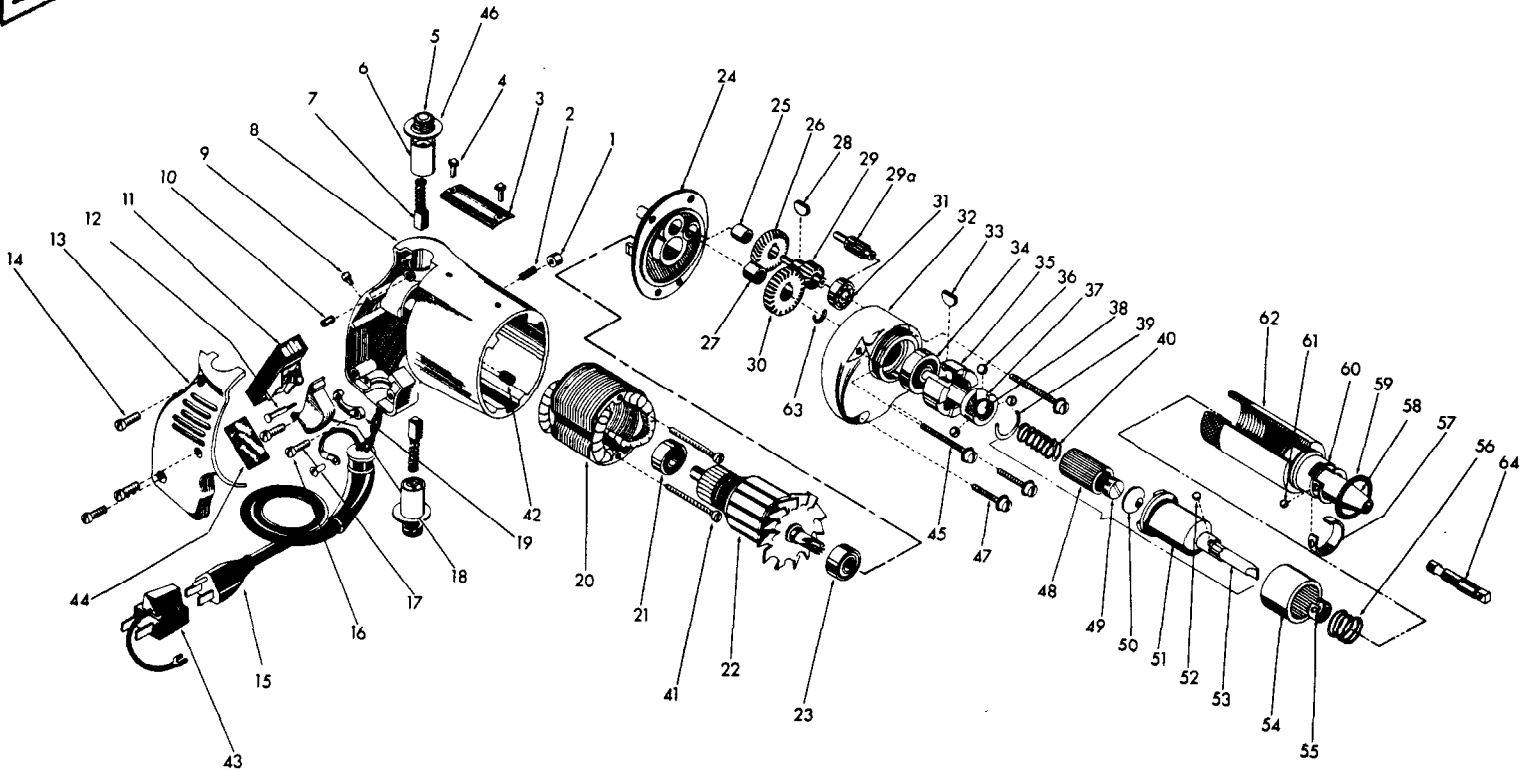
REVISED BUL. 697-4 DATE Feb. '68

Catalog No. **6580**

Starting Serial No. **97-3712**

WIRING INSTR.

Both Model and Serial No. must be furnished to obtain correct parts.



ILLUSTRATED PARTS

FIG.	PART NO.	DESCRIPTION OF PARTS
1	42-42-0061	Trigger Lock Button
2	40-50-1200	Trigger Lock Spring
3	12-98-0600	Name Plate
4	06-81-4300	3-48x3/16 Rd. Hd. Name Plate Scr. (2)
5	23-44-0020	Brush Retaining Cap (2)
6	22-22-0050	Brush Holder Assy. (2)
7	22-18-0090	Carbon Brush Assy. (2)
8	28-50-4447	Motor Housing
9	06-81-5800	6-32x5/16 Fil.Hd. Sems Switch Mtg. Scr.
10	06-83-0100	10-32x1/4 Hd'less slotted Br.Hd. Scr. (2)
11	23-66-0280	Switch
12	44-70-0071	Trigger Lock Shaft
13	28-20-3002	Handle Cover
14	06-81-6150	8-32x1/2 Fil.Hd.Sems Handle Cover Scr. (3)
15	22-64-0170	Cord Set
16	06-81-6150	8-32x1/2 Fil.Hd. Sems Cord Clamp Scr. (2)
17	06-81-8625	6-32x1/4 (Brass) Rd.Hd. Ground Scr.
18	31-92-0101	Switch Trigger
19	28-17-0400	Cord Clamp
*20	18-22-1030	Field
21	02-04-0740	Armature Ball Bearing (Comm. End)
22	16-22-1110	Armature Assy.
23	02-04-0740	Armature Ball Bearing (Pinion End)
24	28-28-0221	Diaphragm
25	02-50-1210	Needle Bearing
26	32-40-1121	Intermediate Gear
27	02-50-1640	Needle Bearing
28	06-42-0400	Woodruff Key
29		Not Used on This Tool
29a	36-66-0851	Intermediate Pinion Shaft
30	32-75-1121	Spindle Gear
31	02-04-0640	Ball Bearing
32	28-14-0361	Gear Case
33	06-42-0800	Woodruff Key
34	02-04-1020	Ball Bearing
35	42-76-0100	Clutch Collar
36	02-02-0310	5/16" Dia. Driving Balls (3)

FIG.	PART NO.	DESCRIPTION OF PARTS
37	38-50-2251	Spindle
38	02-02-0560	9/16" Dia. Ball
39	34-60-1700	Retaining Ring
40	40-50-1500	Torque Limiting Spring (heavy-red)
40a	40-50-1600	Torque Limiting Spring (med-plain)
40b	40-50-1700	Torque Limiting Spring (light-blue)
41	06-81-5950	6-32x1-7/8 Fil.Hd. Sems Field Scr. (2)
42	45-30-0060	Ball Bearing Retaining Slug
43	48-03-0010	Attachment Plug Adaptor
44	23-16-0265	Switch Insulator
45	06-81-6550	8-32x1/2 Fil.Hd. Sems Gear Case Scr. (2)
46	23-86-0070	Insulating Washer
47	06-81-6300	8-32x7/8 Fil.Hd. Sems Gear Case Scr. (2)
48	43-84-0060	Threaded Insert
49	45-04-0090	Adjusting Screw
50	45-88-0200	Bit Backing Washer
51	42-66-0230	Chuck
52	02-02-0150	5/32" Dia. Ball
53	48-30-0500	Hex Bit
53a	48-30-0505	Hex Bit
53b	48-30-0510	Hex Bit
54	02-50-6440	Needle Bearing
55	40-50-1400	Bit Retaining Spring
56	40-50-1900	Finder Spring
57	40-50-1800	Finder Retaining Spring
58	48-30-2025	Finder
58a	48-30-2050	Finder
58b	48-30-2075	Finder
59	34-60-2060	Retaining Ring
60	43-56-0060	Finder Guide
61	02-02-0150	5/32" Dia. Finder Retaining Ball
62	45-22-0090	Sleeve
63	34-60-0600	Spindle Snap Ring
64	48-32-2050	Square Drive