



SERVICE PARTS LIST

BUL. 54-42-2010

SCREWDRIVER

REVISED BUL 697-1 DATE Feb. '68

MODEL NO. 615B

Starting Serial No. **97-1001**

WIRING INSTR.

Both Model and Serial No. must be furnished to obtain correct parts.

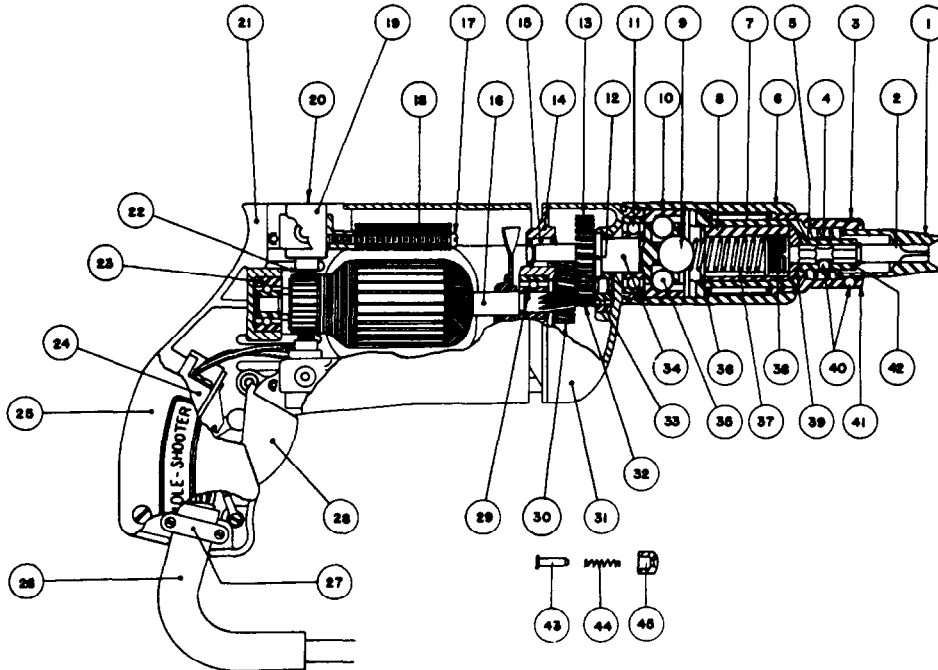


FIG. PART NO.		DESCRIPTION OF PART		NO.REQ.		FIG. PART NO.		DESCRIPTION OF PART		NO.REQ.	
1	Specify Size	Finder Sleeves				24	8909K	Switch			
2	Specify Size	Hexagonal Bits				25	3B1-1	Handle Cover			
3	6A22-1	Finder Retaining Spring				26	8B-28	Cord Protector Tube			
4	6A21-1	Bit Retaining Spring				27	8B1-3	Cord Clamp			
5	6A22-2	Finder Spring				28	3B1-2	Switch Trigger			
6	6A-20	Sleeve				29	WC87037	Armature Ball Bearing (Pinion End)			
7	B-1616	Clutch Assembly Needle Bearing				30	6A-14	Intermediate Gear			
8	6A21-2A	Threaded Insert				31	3A-3C	Gear Case			
9	9/16" Dia.	Master Ball				32	1A-13	Intermediate Pinion Shaft			
10	6A8-1	Clutch Collar				33	ND36	Pinion Shaft Ball Bearing			
11	773L00	Spindle Ball Bearing				34	6A-8A	Spindle			
12	XSO-219	Spindle Snap Ring				35	5/16" Dia.	Driving Balls each			
13	1A-111	Spindle Gear				36	XRO-432	Retaining Ring			
14	3A-2C	Diaphragm				37	6A21-4	Torque Limiting Spring (Normal)			
15	M-471	Spindle Needle Bearing				37a	6A21-5	Torque Limiting Spring (Light)			
16	7B-600	Armature Assembly				38	6A21-3	Adjusting Screw			
17	6-32x1-3/4"	Fil. Hd. Field Screws	(2)			39	6A21-6	Bit Backing Washer			
18	8B-700	Field Assembly				40	5/32" Dia.	Bit and Finder Retaining Balls each			
19	8B-320	Brush Holder Assembly				41	6A-22	Finder Guide			
20	8B-33	Brush Holder Bushing				42	6A-21A	Chuck			
21	3B-1	Motor Housing				43	3B15-1	Trigger Lock Shaft			
22	8B-370	Carbon Brush Assemblies	(2)			44	3A15-4	Trigger Lock Spring			
23	WC87037	Ball Bearing				45	3A15-2	Trigger Lock Button			

MISCELLANEOUS PARTS NOT SHOWN		NO.REQ.		MISCELLANEOUS PARTS NOT SHOWN		NO.REQ.	
Size or Part No.	DESCRIPTION OF PART			Size or Part No.	DESCRIPTION OF PART		
M-361	Int. Pinion Needle Ball Bearing	(1)		6-32x1/4" (Brass)	Rd. Hd.	(1)	
Two Prong	Attachment Plug			8-32x1-3/8"	Fil. Hd. Gear Case Screws	(2)	
SJ16-3	Cord (3-Wire) per foot			8-32x7/8"	Fil. Hd. Gear Case Screws	(2)	
3A-40	Brush Retaining Cap	(2)		4 x 1/4"	Drive In Name Plate Screws	(2)	
6-32x5/16"	Fil. Hd. Sem. Switch Mounting Screws	(1)		614B	Name Plate	(1)	
8-32x3/4"	Fil. Hd. Handle Cover Screws	(3)		No. 201	Woodruff Key	(1)	
10-32x1/4"	Hd'less Slotted Brush Holder Screws	(2)		No. 207	Woodruff Key	(1)	
8-32x1/2"	Fil. Hd. Cord Clamp Screws	(2)					

REVERSING TOOL PARTS NOT SHOWN		NO.REQ.		REVERSING TOOL PARTS NOT SHOWN		NO.REQ.	
Size or Part No.	DESCRIPTION OF PART			Size or Part No.	DESCRIPTION OF PART		
3B1-4	Reversing Switch Housing Cover			8-32 x 5/8"	Fil.Hd.Rev. Switch Housing Mtg. Screws	(2)	
3B1-3	Reversing Switch Housing			8-32 x 1/2"	Fil.Hd.Rev. Switch Housing Cover Screws	(3)	
8374K6	Reversing Switch						