



SERVICE PARTS LIST

BUL. 54-42-0951

POSITIVE DRIVE SCREWDRIVER

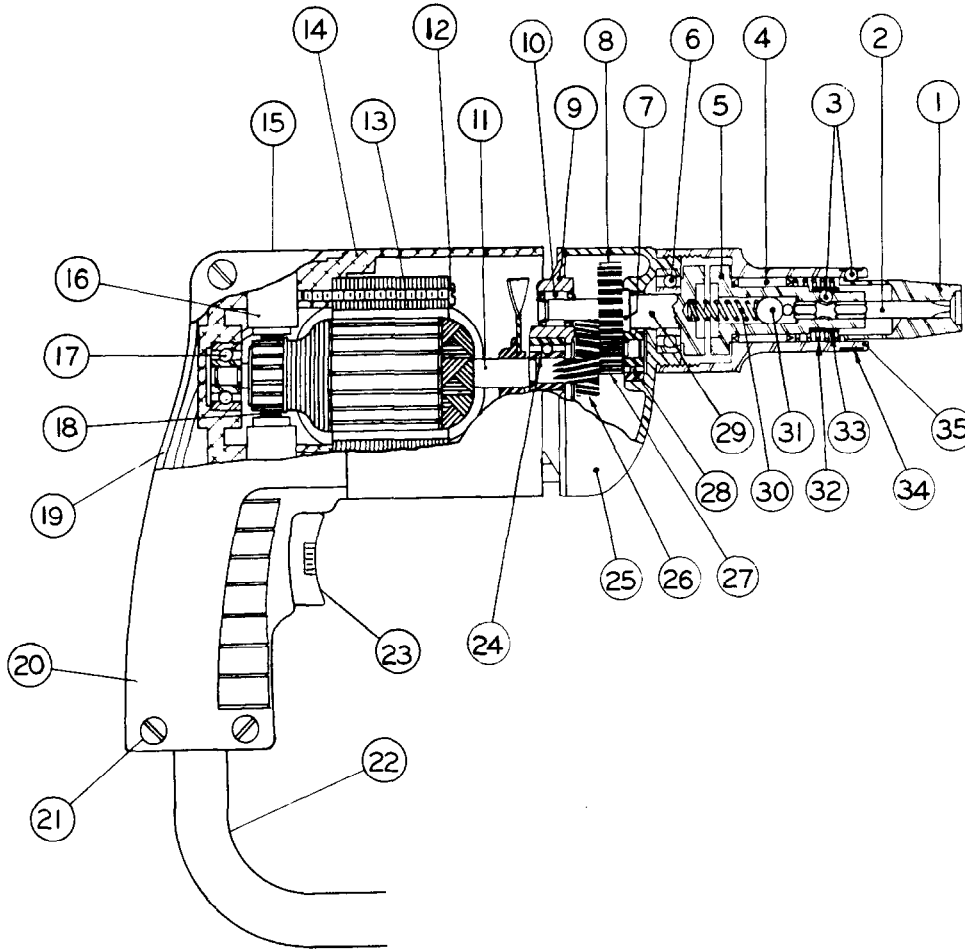
REVISED BUL. 54-42-0950 DATE Aug. '68

Catalog No. 6571-1

Starting Serial No. 426-1062

WIRING INSTR. 58-01-0060

Both Model and Serial No. must be furnished to obtain correct parts.



ILLUSTRATED PARTS

FIG.	PART NO.	DESCRIPTION OF PART	FIG.	PART NO.	DESCRIPTION OF PART
1		Finder Sleeves	★ 19	31-44-0211	Left Hand Handle Half Assy.
2		Hexagonal Bits	★ 20	31-44-0200	Right Hand Handle Half
3	02-02-0150	5/32 Steel Ball (2)	★ 21	06-81-0400	8-32x3/4 Pan Hd. Handle Mtg. Scr. (4)
4	02-50-3640	Needle Bearing	22	22-64-0450	Cord Set
5	42-66-0240	Chuck	23	23-66-0520	Switch
6	02-04-1020	Ball Bearing	24	02-04-0880	Ball Bearing
7	34-60-0600	Spindle Snap Ring	25	28-14-0361	Gear Case
8	32-75-2441	Spindle Gear	26	32-40-1041	Intermediate Gear
9	28-28-0221	Diaphragm	27	36-66-3701	Intermediate Shaft
10	02-50-1640	Needle Bearing	28	02-04-0640	Ball Bearing
11	16-22-1231	Armature	29	38-50-2301	Spindle
12	06-81-5950	6-32x1-7/8 Fil.Hd. Field Scr. (2)	30	40-50-2000	Separating Spring
13	18-22-1121	Field	31	02-02-0310	5/16 Steel Ball
14	28-50-6091	Motor Housing	32	40-50-1900	Finder Spring
15	23-44-0020	Brush Retaining Screw (2)	33	40-50-1400	Bit Retaining Spring
16	22-22-0251	Brush Holder Assy. (2)	34	40-50-1800	Finder Retaining Spring
17	02-04-0740	Ball Bearing	35	45-22-0100	Sleeve
18	22-18-0360	Carbon Brush Assy. (2)			

MISCELLANEOUS PARTS NOT SHOWN

PART NO.	DESCRIPTION OF PART	PART NO.	DESCRIPTION OF PART
02-50-1210	Needle Bearing	12-98-0600	Name Plate
06-81-8625	6-32x1/4 Rd.Hd. Brass Ground Screw	06-42-0400	Woodruff Key
48-03-0010	Plug Adaptor	06-42-0800	Woodruff Key
06-81-6550	8-32x1 1/2 Fil.Hd. Gear Case Screw (2)	45-30-0120	Ball Bearing Ret. Slug
06-81-6300	8-32x7/8 Fil.Hd. Gear Case Screw (2)	06-81-4300	3-48x3/16 Rd.Hd. Name Plate Screw (2)
★ 06-81-0450	8-32x3/8 Pan Hd. Handle Mtg. Scr. (4)	06-83-0100	10-32x1/4 Brush Holder Set Screw (2)