



SERVICE PARTS LIST

BUL.54-42-0851

SCREWDRIVER

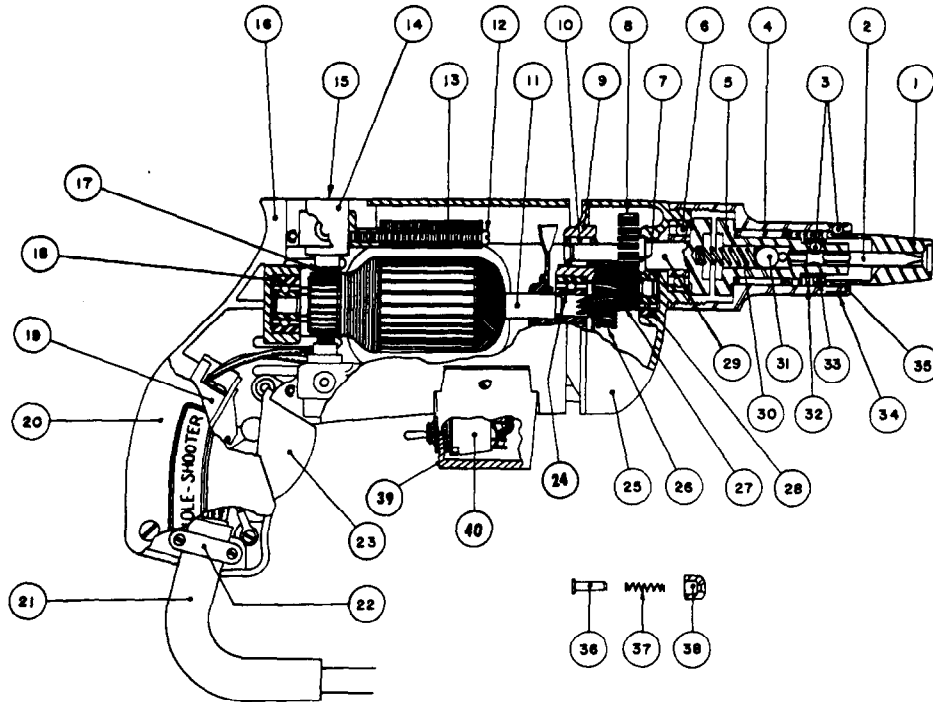
REVISED BUL 6137-2 DATE April '68

Catalog No. 6560-1

Starting Serial No. **137-1058**

WIRING INSTR. **58-01-0080**

Both Model and Serial No. must be furnished to obtain correct parts.



ILLUSTRATED PARTS

FIG.	PART NO.	DESCRIPTION OF PART	NO.REQ.	FIG.	PART NO.	DESCRIPTION OF PART
1	Specify Size	Finder Sleeves		21	22-64-0170	Cord Set
2	Specify Size	Hexagonal Bits		22	28-17-0400	Cord Clamp
3	02-02-0150	Bit and Finder Retaining Balls	(2)	23	31-92-0101	Switch Trigger
4	02-50-3640	Needle Bearing		24	02-04-0740	Ball Bearing (Pinion End)
5	42-66-0240	Chuck		25	28-14-0361	Gear Case
6	02-04-1020	Ball Bearing		26	32-40-1121	Intermediate Gear
7	34-60-0600	Spindle Snap Ring		27	36-66-1551	Intermediate Pinion Shaft
8	32-75-1381	Spindle Gear		28	02-04-0640	Int. Pinion Shaft Ball Brg.
9	28-28-0221	Diaphragm		29	38-50-2301	Spindle
10	02-50-1640	Needle Bearing		30	40-50-2000	Separating Spring
★11	16-22-1241	Armature with Fan		31	02-02-0310	5/16 Dia. Ball
12	06-81-5950	6-32x1-7/8 Fil.Hd. Field Screw Sem	(2)	32	40-50-1900	Finder Spring
★13	18-22-1121	Field Assembly		33	40-50-1400	Bit Retaining Spring
14	22-22-0050	Brush Holder Assembly	(2)	34	40-50-1800	Finder Retaining Spring
15	23-44-0020	Brush Retaining Cap	(2)	35	45-22-0100	Sleeve
16	28-50-4523	Motor Housing		36	44-70-0071	Trigger Lock Plunger
17	22-18-0090	Carbon Brush Assembly	(2)	37	40-50-1200	Trigger Lock Spring
18	02-04-0740	Ball Bearing		38	42-42-0061	Trigger Lock Button
19	23-66-0280	Switch		39	28-50-7041	Reverse Switch Housing
20	28-20-3002	Handle Cover		40	23-66-0220	Reverse Switch

MISCELLANEOUS PARTS NOT SHOWN

PART NO.	DESCRIPTION OF PART	NO.REQ.	PART NO.	DESCRIPTION OF PART	NO.REQ.
02-50-1210	Int. Pinion Needle Bearing		06-81-6550	8-32x1½ Fil.Hd.Gear Case Screws Sem	(2)
06-81-5800	6-32x5/16 Fil. Hd. Sem Switch Mounting Screws	(3)	06-81-4300	3-48x3/16 Rd.Hd. Name Plate Screws	(2)
06-81-6150	8-32x½ Fil.Hd. Sems Handle Cover Screws	(3)	★ 12-98-0600	Name Plate	
06-83-0100	10-32x¼ Hd'less Slotted Brush Holder Scrs.	(2)	06-42-0400	Woodruff Key	
06-81-6150	8-32x½ Fil. Hd. Cord Clamp Screws Sem	(2)	06-42-0800	Woodruff Key	
06-81-8625	6-32x¼ (Brass) Rd. Hd. Ground Screw Sem		48-03-0010	Attachment Plug Adaptor	
23-16-0265	Switch Insulator		42-14-0060	Baffle	
06-81-6300	8-32x7/8 Fil. Hd. Sem Gear Case Screw	(2)	45-30-0060	Ball Bearing Ret. Slug	
★ 06-97-1800	Lock Washer	(4)	★ 23-48-7327	Insulating Tubing	
★ 22-75-0055	Switch Dial				