



# SERVICE PARTS LIST

BUL. 54-42-0801

## SCREWDRIVER

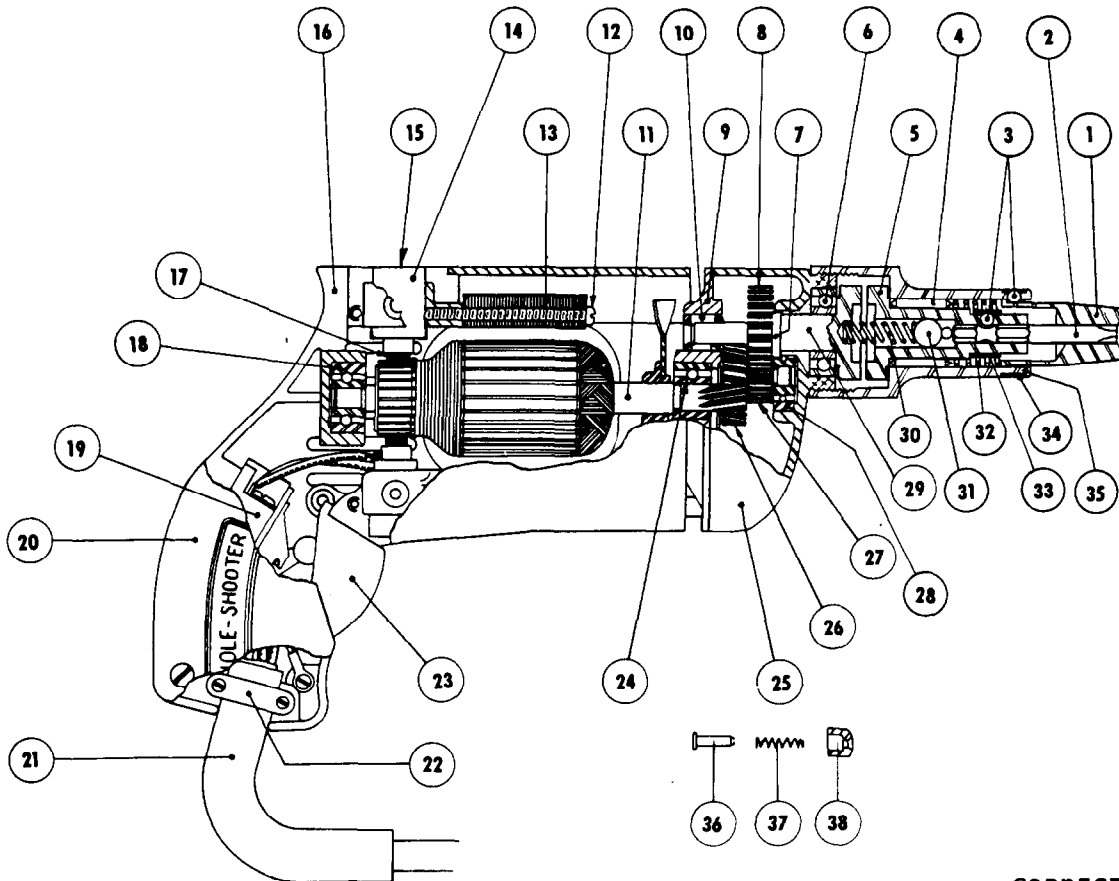
REVISED BUL 6136-2 DATE Feb. '68

Catalog No. 6560

Starting Serial No. 136-1036

WIRING INSTR.

Both Model and Serial No. must be furnished to obtain correct parts.



CORRECTS AND SUPERSEDES SERVICE BULLETIN 6136-2 DATED 9/30/65

FIG. PART NO. DESCRIPTION OF PART

1	Specify Size Finder Sleeves
2	Specify Size Hexagonal Bits
3	02-02-0150 Bit and Finder Retaining Balls
4	02-50-3640 Needle Bearing
5	42-66-0240 Chuck
6	02-04-1020 Ball Bearing
7	34-60-0600 Spindle Snap Ring
8	32-75-1381 Spindle Gear
9	28-28-0221 Diaphragm
10	02-50-1640 Needle Bearing
11	16-22-1110 Armature with Fan
12	06-81-5950 6-32x1-7/8 Fil.Hd. Field Screws
13	18-22-1040 Field Assembly
14	22-22-0050 Brush Holder Assembly
15	23-44-0020 Brush Retaining Cap
16	28-50-4447 Motor Housing
17	22-18-0090 Carbon Brush Assembly
18	02-04-0740 Ball Bearing
19	23-66-0280 Switch

ILLUSTRATED PARTS

FIG. PART NO. DESCRIPTION OF PART	FIG. PART NO. DESCRIPTION OF PART
20	28-20-3002 Handle Cover
21	22-64-0170 Cord Set
22	28-17-0400 Cord Clamp
*23	31-92-0101 Switch Trigger
24	02-04-0740 Ball Bearing (Pinion End)
25	28-14-0361 Gear Case
26	32-40-1121 Intermediate Gear
27	36-66-1551 Intermediate Pinion Shaft
28	02-04-0640 Ball Bearing
29	38-50-2301 Spindle
30	40-50-2000 Separating Spring
(2) 31	02-02-0310 5/16 Dia. Ball
32	40-50-1900 Finder Spring
33	40-50-1400 Bit Retaining Spring
(2) 34	40-50-1800 Finder Retaining Spring
35	45-22-0100 Sleeve
(2) 36	44-70-0071 Trigger Lock Shaft
37	40-50-1200 Trigger Lock Spring
38	42-42-0061 Trigger Lock Button

MISCELLANEOUS PARTS NOT SHOWN

PART NO. DESCRIPTION OF PART	PART NO. DESCRIPTION OF PART
02-50-1210 Needle Bearing	06-81-6550 8-32x1-1/2 Fil.Hd. Gear Case Screws (2)
06-81-5800 6-32x5/16 Fil.Hd. Sem. Switch Mounting Screw	06-81-6300 8-32x7/8 Fil.Hd. Gear Case Screws (2)
06-81-6150 8-32x1/2 Fil.Hd. Sems Handle Cover Screws (3)	12-98-0600 Name Plate
06-83-0100 10-32x1/4 Hd'less Slotted Brush Holder Scs. (2)	06-42-0400 Woodruff Key
06-81-6150 8-32x1/2 Fil.Hd. Cord Clamp Screws (2)	06-42-0800 Woodruff Key
06-81-8625 6-32x1/4 (Brass) Rd.Hd. Ground Screw	48-03-0010 Attachment Plug Adaptor
06-81-4300 3-48x3/16 Rd.Hd. Sems Name Plate Screws (2)	45-30-0060 Ball Brg. Retaining Slug
23-16-0265 Insulator	