



SERVICE PARTS LIST

BUL. 54-42-0800

SCREWDRIVER

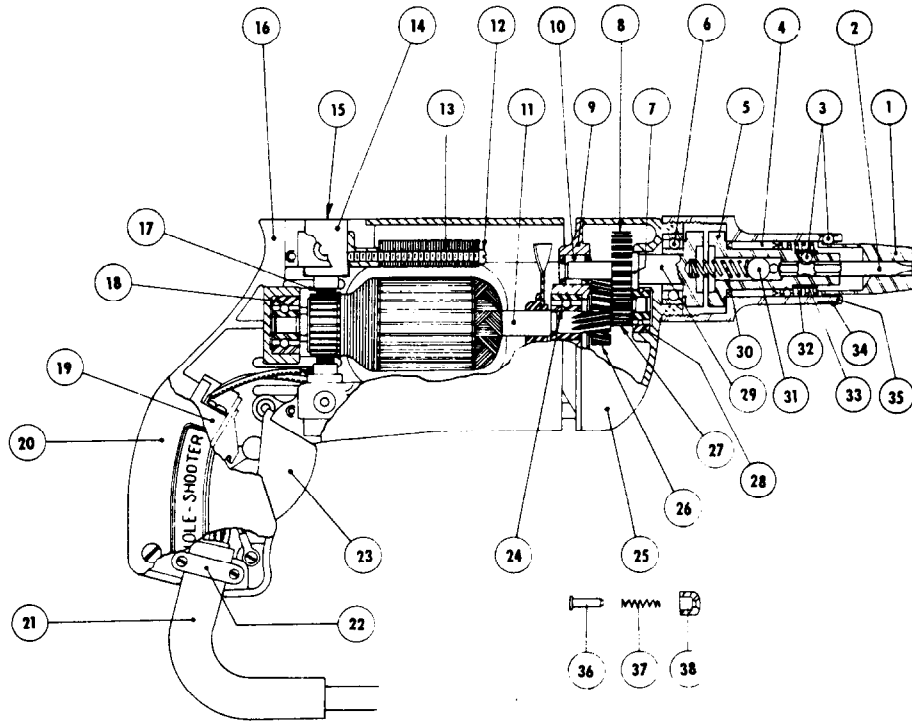
REVISED BUL 6136-1 DATE Feb. '68

MODEL NO. 614M

Starting Serial No. **136-1001**

WIRING INSTR.

Both Model and Serial No. must be furnished to obtain correct parts.



ILLUSTRATED PARTS

FIG.	PART NO.	DESCRIPTION OF PART	PRICE	FIG.	PART NO.	DESCRIPTION OF PART
1	Specify Size	Finder Sleeves	See Price List	20	3B1-1	Handle Cover
2	Specify Size	Hexagonal Bits	See Price List	21	18G-8SR2	Cord Set
3	5/32 Dia.	Bit and Finder Retaining Balls		22	8B1-3	Cord Clamp
4	B-912	Needle Bearing		23	3B1-2	Switch Trigger
5	6A24-2	Chuck		24	WC87037	Armature Ball Brg. (Pinion End)
6	93L00	Spindle Ball Bearing		25	3A-3C	Gear Case
7	XSO-219	Spindle Snap Ring		26	6A-14	Intermediate Gear
8	6A-111	Spindle Gear		27	6A-13	Intermediate Pinion Shaft
9	3A-2C	Diaphragm		28	ND36	Int. Pinion Shaft Ball Brg.
10	M-471	Spindle Needle Bearing		29	6A24-3	Spindle
11	7B-600	Armature with Fan		30	6A24-4	Separating Spring
12	#6-32x1 1/4 Fil.	Hd. Field Screws	(2)	31	5/16 Dia.	Ball
13	8B-704	Field Assembly		32	6A22-2	Finder Spring
14	7B-320	Brush Holder Assembly		33	6A21-1	Bit Retaining Spring
15	3A-40	Brush Retaining Cap	(2)	34	6A22-1	Finder Retaining Spring
16	3B-1A	Motor Housing		25	6A24-1	Sleeve
17	8B-370	Carbon Brush Assembly	(2)	36	3B15-1	Trigger Lock Shaft
18	WC87037	Ball Bearing		37	3A15-4	Trigger Lock Spring
19	8909K209	Switch		38	3A15-2	Trigger Lock Button

MISCELLANEOUS PARTS NOT SHOWN

SIZE OR PART NO.	DESCRIPTION OF PART	PRICE	SIZE OR PART NO.	DESCRIPTION OF PART	PRICE
M-361	Int. Pinion Shaft Needle Brg.		#8-32x1-3/8 Fil. Hd.	Gear Case Screws	(2)
#6-32x5/16 Fil. Hd.	Sem. Switch Mounting Screw		#8-32x7/8 Fil. Hd.	Gear Case Screws	(2)
#8-32x3/4 Fil. Hd.	Handle Cover Screws	(3)	614M	Name Plate	
#10-32x1/4 Hd'less	Slotted Brush Holder Screws	(2)	#201	Woodruff Key	
#8-32x1/2 Fil. Hd.	Cord Clamp Screws		#207	Woodruff Key	
#6-32x1/4 (Brass)	Rd. Hd. Ground Screw		3PA-1	Attachment Plug Adaptor	
#4x1/4 Driv-In	Name Plate Screws				