



SERVICE PARTS LIST

BULLETIN NO.
54-42-0308

SPECIFY CATALOG NO. AND SERIAL NO. WHEN ORDERING PARTS			REVISED BULLETIN	DATE
0-1000 R.P.M. REV. SCREWDRIVER			54-42-0307	May '94
CATALOG NO.	6543-1	STARTING SERIAL NO.	WIRING INSTRUCTION	
			58-01-0029	



EXAMPLE:
Component Parts (Small #)
Are Included When Ordering
The Assembly (Large #).

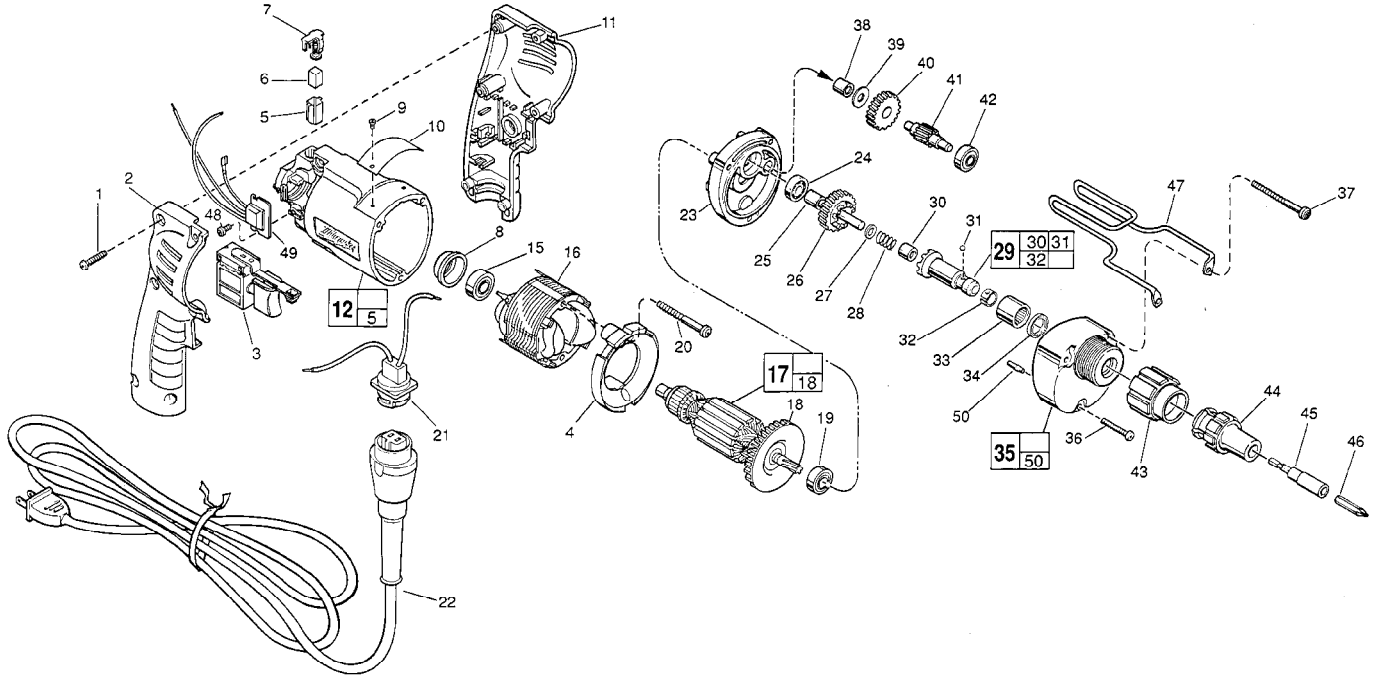


FIG. PART NO.	DESCRIPTION OF PART	NO. REQ.	FIG. PART NO.	DESCRIPTION OF PART	NO. REQ.
1	06-82-7284 8-16 x 3/4" Pan Hd. Slit. Plast. T-20	(6)	39	45-88-7990 Thrust Washer	(1)
★ 2	31-44-1845 Right Handle Half	(1)	40	32-40-1613 Intermediate Gear	(1)
3	23-66-2145 Speed Control Switch	(1)	41	36-66-4096 Intermediate Pinion Shaft	(1)
★ 4	42-14-0380 Baffle	(1)	42	02-04-0640 Ball Bearing	(1)
5	22-20-0830 Brush Tube	(2)	43	48-32-1000 Bit Housing	(1)
6	22-16-0275 Carbon Brush	(2)	44	48-32-0250 Bit Guide	(1)
7	23-52-1560 Brush Spring Assembly	(2)		48-32-0608 Long Bit Guide (Refer To Catalog)	(1)
8	22-72-0100 Bearing Cup	(1)		48-32-1012 Long Bit Guide (Refer To Catalog)	(1)
9	06-85-0200 Nameplate Screw	(2)	45	48-32-3050 Bit Holder - Non Magnetic	(1)
★ 10	12-99-0860 Service Nameplate	(1)		48-30-2600 Bit & Finder Combination (Refer To Catalog)	(1)
★ 11	31-44-1840 Left Handle Half	(1)		48-30-2650 Bit & Finder Combination (Refer To Catalog)	(1)
★ 12	14-38-0590 Motor Housing Assembly	(1)	46	48-32-1050 #2 Insert Bit	(1)
15	02-04-0645 Ball Bearing	(1)	47	42-70-5080 Belt Clip	(1)
16	18-11-0150 120 Volt Field	(1)	48	06-82-7212 4-20 x 1/4" Pan Hd. Slit. Plast. T-10	(1)
★ 17	16-10-0680 120 Volt Armature	(1)	49	14-20-0650 Remote Electronic Assembly	(1)
★ 18	22-84-0880 Fan Assembly	(1)	50	06-65-0825 1/8 x 1/2 Groove Pin 5	(1)
19	02-04-0848 Ball Bearing	(1)			
★ 20	06-82-7203 7-18 x 2-1/8" Pan Hd. Slit. Plast. T-20	(2)	FIG. LUBRICATION		
★ 21	22-56-0665 Blade Housing Assembly	(1)	35	1-1/2 Oz. Type "E" Grease, No. 49-08-4122. Place Near Intermediate Shaft Ball Bearing In Gear Case.	
★ 22	48-76-5010 Cord Set	(1)	FIG. NOTES		
23	28-28-1960 Diaphragm	(1)	1	Torque to 18-22 In./Lbs.	
24	02-04-0645 Ball Bearing	(1)	20,36, 37	Torque to 15-20 In./Lbs.	
25	45-36-1280 Spacer	(1)	48	Torque to 3-5 In./Lbs.	
26	32-10-4050 Clutch Gear Assembly	(1)	8	Place in motor housing before inserting armature.	
27	45-88-0712 Thrust Washer	(1)	30,33	Press only on end with manufacturer ID.	
28	40-50-6600 Separator Spring	(1)	30	Press 11/64" from clutch face.	
29	42-66-0766 Clutch Chuck Assembly	(1)	34	Lip towards front of gear case.	
30	02-50-2400 Needle Bearing	(1)	15,19,24	Seal towards armature.	
31	02-02-0130 Steel Ball	(1)	33,38	Press flush to casting surface.	
32	40-50-0510 Bit Retaining Spring	(1)			
33	02-50-4220 Needle Roller Bearing	(1)			
34	45-06-0106 Oil Seal	(1)			
35	14-30-0600 Gear Case Assembly	(1)			
36	06-82-7344 7-18 x 1-1/2" Pan Hd. Slit. Plast. T-20	(1)			
37	06-82-7464 7-18 x 2-3/4" Pan Hd. Slit. Plast. T-20	(2)			
38	02-50-2410 Needle Bearing	(1)			

MILWAUKEE ELECTRIC TOOL CORPORATION
13135 W. LISBON RD., BROOKFIELD, WI 53005