



SERVICE PARTS LIST

BUL. 54-42-0500

SCREWDRIVER

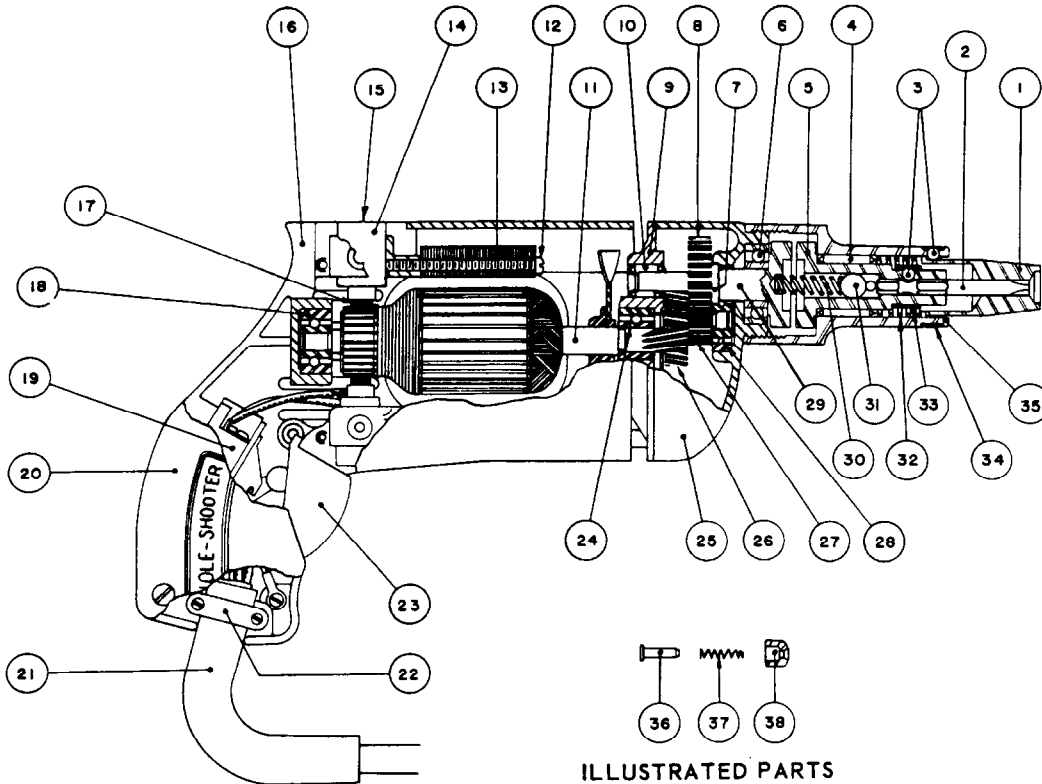
MODEL NO. 614B

Starting
Serial No. **41-1001**

REVISED BUL 641	DATE Feb. '68
--------------------	------------------

WIRING INSTR.

Both Model and Serial No. must be furnished to obtain correct parts.



ILLUSTRATED PARTS

FIG.	PART NO.	DESCRIPTION OF PART	SEE NOTE	FIG.	PART NO.	DESCRIPTION OF PART	SEE NOTE
1	Specify Size	Finder Sleeves		20	3B1-1	Handle Cover	H
2	Specify Size	Hexagonal Bits		21	8B-28	Cord Protector Tube	J
3	5/32 Dia.	Bit and Finder Retaining Ball		22	8B1-3	Cord Clamp	K
4	B-912	Needle Bearing		23	3B1-2	Switch Trigger	L
5	6A24-2	Chuck		24	87037	Armature Ball Brg. (Pinion End)	
6	773L00	Spindle Ball Bearing		25	3A-3C	Gear Case	
7	XSO-219	Spindle Snap Ring		26	6A-14	Intermediate Gear	
8	1A-111	Spindle Gear		27	1A-13	Intermediate Pinion Shaft	
9	3A-2C	Diaphragm		28	#36	Int. Pinion Shaft Ball Brg.	
10	M-471	Spindle Needle Bearing		29	6A24-3	Spindle	
11	7B-600	Armature Assembly	A	30	6A24-4	Separating Spring	
12	6-32x1½	Fil. Hd. Field Screw	B	31	5/16 Dia.	Ball	
13	8B-700	Field Assembly	S	32	6A22-2	Finder Spring	
14	7B-320	Brush Holder Assembly	C	33	6A21-1	Bit Retaining Spring	
15	3A-40	Brush Retaining Cap		34	6A22-1	Finder Retaining Spring	
16	3B-1A	Motor Housing	D	35	6A24-1	Sleeve	
17	8B-370	Carbon Brush Assembly	E	36	3B15-1	Trigger Lock Shaft	M
18	87037	Ball Bearing	F	37	3A15-4	Trigger Lock Spring	
19	8909K-209	Switch	G	38	3A15-2	Trigger Lock Button	
M-361		Int. Pinion Needle Brg.		614-1		Name Plate	
3P-1		Attachment Plug	N	3A25-1		Cord Clamp Retainer	T
S18-3		Cord (3-wire)	P	3A15-1		Trigger Pin	U
3PA-1		Attachment Plug Adaptor	R				

MISCELLANEOUS PARTS NOT SHOWN

REFERENCE NOTES

- A - Use Part 6A-600D below Serial No. 41-1001
- B - Use Part 6-32x1½ below Serial No. 41-1001
- C - Use Part 8B-320 for Serial No. 41-1001 to 41-1100
Use Part 3A-320 below Serial No. 41-1001
- D - Use Part 3B-1 for Serial No. 41-1001 to 41-1100
Use Part 3A-100B below Serial No. 41-1001
- E - Use Part 3A-370 below Serial No. 41-1001
- F - Use Part 7037 below Serial No. 41-1001
- G - Use Part 8634K2 below Serial No. 41-1001
- H - Use Part 3A1-1A below Serial No. 41-1001
- J - Use Part 48D-28 below Serial No. 41-1001
- K - Use Part 3A-25 below Serial No. 41-1001
- L - Use Part 3A-15A below Serial No. 41-1001
- M - Use Part 3A15-3 below Serial No. 41-1001
- N - Use Part 2P-1 below Serial No. 41-1100
- P - Use Part SJ16-3 for Serial No. 41-1001 to 41-1100 only
- R - Part not used below Serial No. 41-1100
- S - Use Part 3A-700 below Serial No. 41-1001
- T - Use Part 3A25-1 for Serial No. 41-1001 to 41-1100 only
Use Part 3A1-2 below Serial No. 41-1001
- U - Use Part below Serial No. 41-1001 only