

SERVICE PARTS LIST

BULLETIN NO.
55-40-0322

SPECIFY CATALOG NO. AND SERIAL NO. WHEN ORDERING PARTS		REVISED BULLETIN 55-40-0321	DATE Sept. 91
VARIABLE SPEED DOUBLE INSULATED SAWZALL®			
CATALOG NO. 6512-4	STARTING SERIAL NO. 600-9400	WIRING INSTRUCTION 58-03-1325	

EXAMPLE:

00 0 Component Parts (Small #) Are Included
When Ordering The Assembly (Large #).

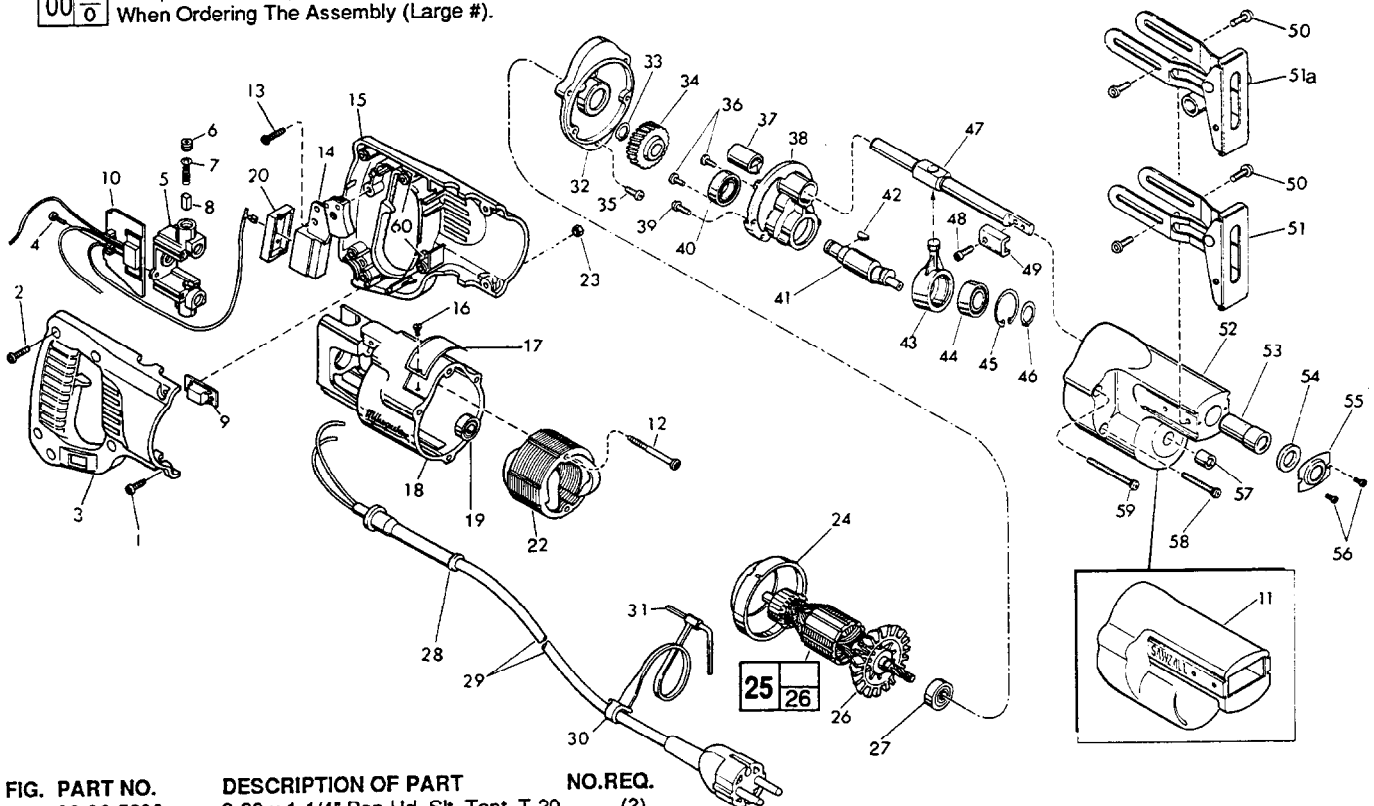


FIG.	PART NO.	DESCRIPTION OF PART	NO.REQ.
★	1	8-32 x 1-1/4" Pan Hd. Slit. Tapt. T-20	(2)
★	2	8-16 x 5/8" Pan Hd. Slit. Plast. T-20	(5)
★	3	Right Handle Half	(1)
★	4	6-19 x 1/2" Pan Hd. Slit. Plast. T-15	(2)
★	5	Brush Holder Assembly	(1)
★	6	Brush Retaining Cap	(2)
★	7	Brush Spring	(2)
★	8	Carbon Brush	(2)
★	9	Plug	(1)
★	10	Remote Switch Assembly	(1)
★	11	Gear Case Insulator	(1)
★	12	8-16 x 1-3/4" Pan Hd. Plast. T-20	(2)
★	13	8-16 x 5/8" Pan Hd. Slit. Plast. T-20	(1)
★	14	Switch	(1)
★	15	Handle Assembly	(1)
★	16	Nameplate Screw	(2)
★	17	Nameplate Blank	(1)
★	18	Motor Housing	(1)
★	19	Ball Bearing	(1)
★	20	Dust Shield	(1)
★	22	220 V. Field	(1)
★	23	8-32 Hex Nut	(2)
★	24	Baffle	(1)
★	25	220 V. Armature	(1)
★	26	Fan Assembly	(1)
★	27	Ball Bearing	(1)
★	28	Cord Protector	(1)
★	29	Cord Set	(1)
★	30	Key Holder	(1)
★	31	5/32" Socket Wrench	(1)
★	32	Diaphragm	(1)
★	33	External Retaining Ring	(1)
★	34	Intermediate Gear	(1)
★	35	8-16 x 5/8" Fil. Hd. Plast. T-20	(1)
★	36	6-32 x 3/8" Truss Hd. Taptite Screw	(2)
★	37	Rear Spindle Bearing	(1)
★	38	Bearing Plate	(1)
★	39	8-32 x 1/2" Fil. Hd. Taptite T-20	(2)
★	40	Ball Bearing	(1)

FIG.	PART NO.	DESCRIPTION OF PART	NO.REQ.
★	41	Wobble Shaft	(1)
★	42	Woodruff Key	(1)
★	43	Wobble Plate	(1)
★	44	Ball Bearing	(1)
★	45	Internal Retaining Ring	(1)
★	46	Retaining Ring	(1)
★	47	Reciprocating Spindle	(1)
★	48	10-32 x 1/2" Pan Hd. Taptite Sems	(1)
★	49	Blade Clamp	(1)
★	50	10-24 x 1/2" Pan Hd. Taptite Sems	(4)
★	51	Pivot Shoe Assembly	(1)
★	51a	Pivot Shoe Assembly-European	(1)
★	52	Gear Case	(1)
★	53	Spindle Bearing	(1)
★	54	Felt Seal	(1)
★	55	Seal Retainer	(1)
★	56	4-40 x 3/16" Pan Hd. Taptite Screw	(2)
★	57	Needle Bearing	(1)
★	58	8-32 x 1-3/8" Fil. Hd. Taptite T-20	(2)
★	59	8-16 x 1-15/16" Fil. Hd. Plast. T-20	(2)
★	60	Foam Slug Kit - 10 Slugs	(2)
★	22-33-0285	Capacitor	(1)

FIG. NOTES
 39 Apply type 242 blue loctite
 33,45,46 Burr side out
 37 V-notch press in from diaphragm side
 53 Press .02/.03 below surface (.51/.76mm)

FIG. LUBRICATION
 34,38 1/2 oz. type "A" grease, No. 49-08-0800.
 52 2-1/2 oz. type "B" grease, No. 49-08-0600.

MILWAUKEE ELECTRIC TOOL CORPORATION
 13135 W. LISBON RD., BROOKFIELD, WI 53005