



SERVICE PARTS LIST

BULLETIN NO.
54-40-6491

| SPECIFY CATALOG NO. AND SERIAL NO. WHEN ORDERING PARTS | | REVISED BULLETIN | DATE |
|--|------|--------------------|----------|
| 10" MAGNUM MITER SAW | | 54-40-6490 | Nov. '94 |
| CATALOG NO. | 6490 | WIRING INSTRUCTION | |
| STARTING SERIAL NO. | 799B | 58-01-1350 | |



EXAMPLE:
Component Parts (Small #) Are Included
When Ordering The Assembly (Large #).

| FIG. | PART NO. | DESCRIPTION OF PART | NO. REQ. |
|------|------------|---|----------|
| ★ 1 | 02-80-0130 | Needle Thrust Bearing | (1) |
| 2 | 02-02-2040 | 7/16" Steel Ball | (1) |
| 3 | 02-04-0845 | Ball Bearing | (2) |
| 4 | 02-04-1229 | Ball Bearing | (1) |
| 5 | 02-04-2040 | Ball Bearing | (1) |
| 6 | 06-42-2400 | Woodruff Key | (1) |
| 7 | 06-55-1525 | 1/4"-20 Hex Nut | (1) |
| 8 | 06-55-1985 | 5/16"-18 Hex Nut | (1) |
| 9 | 06-55-2710 | 7/16"-14 Hex Nut | (1) |
| ★ 10 | 45-88-0660 | Washer | (1) |
| ★ 11 | 40-50-8620 | Belleville Spring | (3) |
| 13 | 06-75-4000 | 5/16-18 x 1-3/8" Cap Screw | (7) |
| 14 | 06-82-5270 | 6-32 x 1/4" Pan Hd. Slit. Tapt. T-15 | (1) |
| 15 | 06-82-5314 | 10-24 x 1/2" Pan Hd. Slit. Tapt. T-25 | (2) |
| ★ 16 | 06-82-5338 | 1/4-20 x 1/2" Pan Hd. Slit. Tapt. T-30 | (3) |
| 17 | 06-82-5411 | 10-24 x 5/8" Pan Hd. Slit. Tapt. T-25 | (20) |
| 18 | 06-82-7212 | 4-20 x 1/4" Pan Hd. Plastite T-10 | (2) |
| 19 | 06-82-7226 | 6-19 x 5/16" Pan Hd. Slit. Plast. T-15 | (1) |
| 20 | 06-82-7270 | 8-16 x 5/8" Pan Hd. Slit. Plast. T-20 | (12) |
| 21 | 06-82-7453 | 8-16 x 2-1/4" Pan Hd. Slit. Plast. T-20 | (2) |
| 22 | 06-82-9024 | 10-24 x 1-3/4" Pan Hd. Slit. Tapt. T-25 | (4) |
| 23 | 06-83-3150 | 5/16-18 x 1/2" Hex Socket | (2) |
| 24 | 06-83-3200 | 5/16-18 x 1" Set Screw | (1) |
| 25 | 10-15-0230 | Warning Label | (2) |
| 26 | 12-20-0090 | Service Nameplate Kit | (1) |
| 27 | 16-70-0420 | Armature | (1) |
| 28 | 18-70-0420 | Field | (1) |
| 29 | 22-18-0387 | Carbon Brush | (2) |
| 30 | 22-20-0800 | Brush Tube | (2) |
| 30A | 22-20-0802 | Brush Tube Assembly | (2) |
| 31 | 22-64-3210 | Cord Set | (1) |
| 32 | 23-66-2037 | Switch Assembly | (1) |
| 33 | 25-20-1319 | Upper Guard Cover | (1) |
| ★ 34 | 28-06-1021 | Base | (1) |
| ★ 35 | 28-06-1036 | Table | (1) |
| ★ 36 | 28-14-2216 | Upper Guard Gear Case | (1) |
| 37 | 28-35-0010 | Fence | (1) |
| ★ 38 | 28-90-0212 | Pivot Support | (1) |
| 39 | 31-44-1725 | Handle Half | (1) |
| 40 | 31-50-1010 | Motor Housing | (1) |
| 41 | 32-75-3350 | Gear | (1) |
| 42 | 34-40-1375 | 1-1/4" O-Ring | (1) |
| 43 | 34-60-2560 | Retaining Ring | (1) |
| 44 | 38-50-5840 | Spindle | (1) |
| 45 | 40-50-8040 | Spring | (1) |
| 46 | 40-50-8160 | Coil Spring | (2) |
| 47 | 40-50-8170 | Locking Spring | (1) |
| 48 | 40-50-8180 | Spring | (1) |
| 49 | 40-50-8190 | Retaining Spring | (2) |
| ★ 50 | 40-50-8700 | Leaf Spring | (1) |
| 51 | 42-12-0160 | Axle | (1) |
| 52 | 42-14-0350 | Baffle | (1) |
| 53 | 42-14-0355 | Baffle | (1) |
| ★ 54 | 42-50-0270 | Cam | (1) |
| 55 | 42-92-0890 | End Cover | (1) |
| 57 | 42-96-0130 | Bearing Cup | (1) |
| 58 | 43-34-0720 | Blade Flange | (2) |
| 59 | 43-54-0695 | Lower Guard | (1) |
| 60 | 43-54-0700 | Blade Screw Guard | (1) |
| 61 | 43-62-1050 | Locking Handle | (1) |
| 62 | 43-72-0180 | Spring Holder | (2) |
| 64 | 44-10-0310 | Locking Lever | (1) |
| 67 | 44-20-0260 | Detent Lock | (1) |
| 69 | 44-60-1300 | Lock Pin | (1) |
| 70 | 44-66-5920 | Locking Plate | (1) |
| 71 | 44-66-5930 | Kerf Plate | (1) |

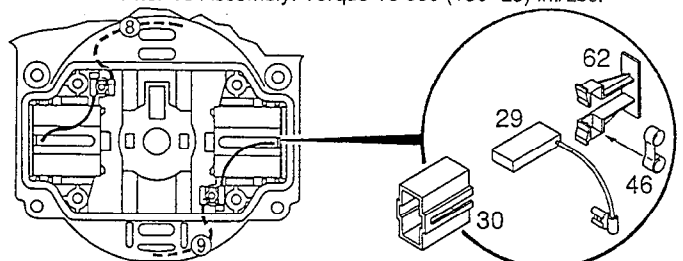
| FIG. | PART NO. | DESCRIPTION OF PART | NO. REQ. |
|------|------------|---------------------|----------|
| 72 | 44-66-5945 | Detent Lever Plate | (1) |
| 73 | 44-72-0010 | Pointer | (1) |
| 74 | 44-76-0210 | Cord Protector | (1) |
| 76 | 44-96-0130 | Roller | (1) |
| 77 | 45-04-0850 | Shoulder Screw | (2) |
| 78 | 45-04-0860 | Blade Screw | (1) |
| ★ 79 | 45-08-0330 | Table Shaft | (1) |
| 80 | 45-60-0530 | Spring Support | (1) |
| 81 | 45-76-0330 | Dust Tube | (1) |
| ★ 82 | 45-88-8540 | Washer | (2) |
| 84 | 22-84-0850 | Fan | (1) |
| 85 | 23-74-1150 | Terminal | (2) |
| | 49-96-6200 | Box Wrench | (1) |

FIG. LUBRICATION

- 82 Apply A Thin Coat Of "L" Grease, No. 49-08-4170 To Both Sides Of Washers.
- 34,79 Apply .12 Oz. Of "L" Grease, No.49-08-4170, Under The Head Of The Table Shaft. Apply A Thin Film Of "L" Grease To The O.D. Of The Table Shaft And To The I.D. Of The Center Bore Of The Base, Prior To Assembly.
- 36,51 Apply .06 Oz. Type "L" Grease, No. 49-08-4170, To The (2) .125 Wide Grooves Of Axle. Also Apply A Thin Film To The O.D. Of Axle (Not Between The (2) Locating Grooves), And To The I.D. Of The (2) Pivoting Hubs Of The Upper Guard / Gear Case Prior To Assembly.
- 33,51 Apply A Dab Of Type "L" Grease, No. 49-08-4170, To The Cover End Of Axle, Prior To Assembly Of Upper Guard Cover.
- 36 Place .50 Oz. Type "O" Grease, No. 49-08-4200, In The Pinion Pocket Of Upper Guard / Gear Case.

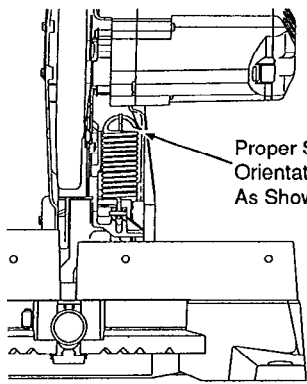
FIG. NOTES:

- 16,54 When Assembling Cam With Screws, Lightly Insert Lower Screw First And Then Pivot Cam Counterclockwise About Lower Screw Until It Bottoms Out On The Rib Of The Gear Case, Then Insert The Upper Screw And Tighten Both The Upper And Lower Screws To 60-75 In./Lbs.
- 23,33 Tighten 5/16" Set Screws Only After Assembly Of Upper Guard Cover. Loosen Set Screws before disassembly of Upper Guard Cover.
- 43 Assemble Retaining Ring With The Concave Bow Of The Ring Toward The Gear.
- 27,40,57 Place Bearing Cup Into Motor Housing Prior To Assembling Onto Armature.
- 49 Retaining Springs Relative Orientation To Be 180° Apart-Dimples To Engage Slots.
- 3 Ball Bearing (On The Commutator End Of Armature)-Seal Toward Commutator. Ball Bearing (On Fan End Of Armature)-Seal Toward Gear.
- 79 Apply Red Locking Sealant To Two Threads Of Table Shaft Prior To Assembly. Torque To 360 (+50 -25) In./Lbs.

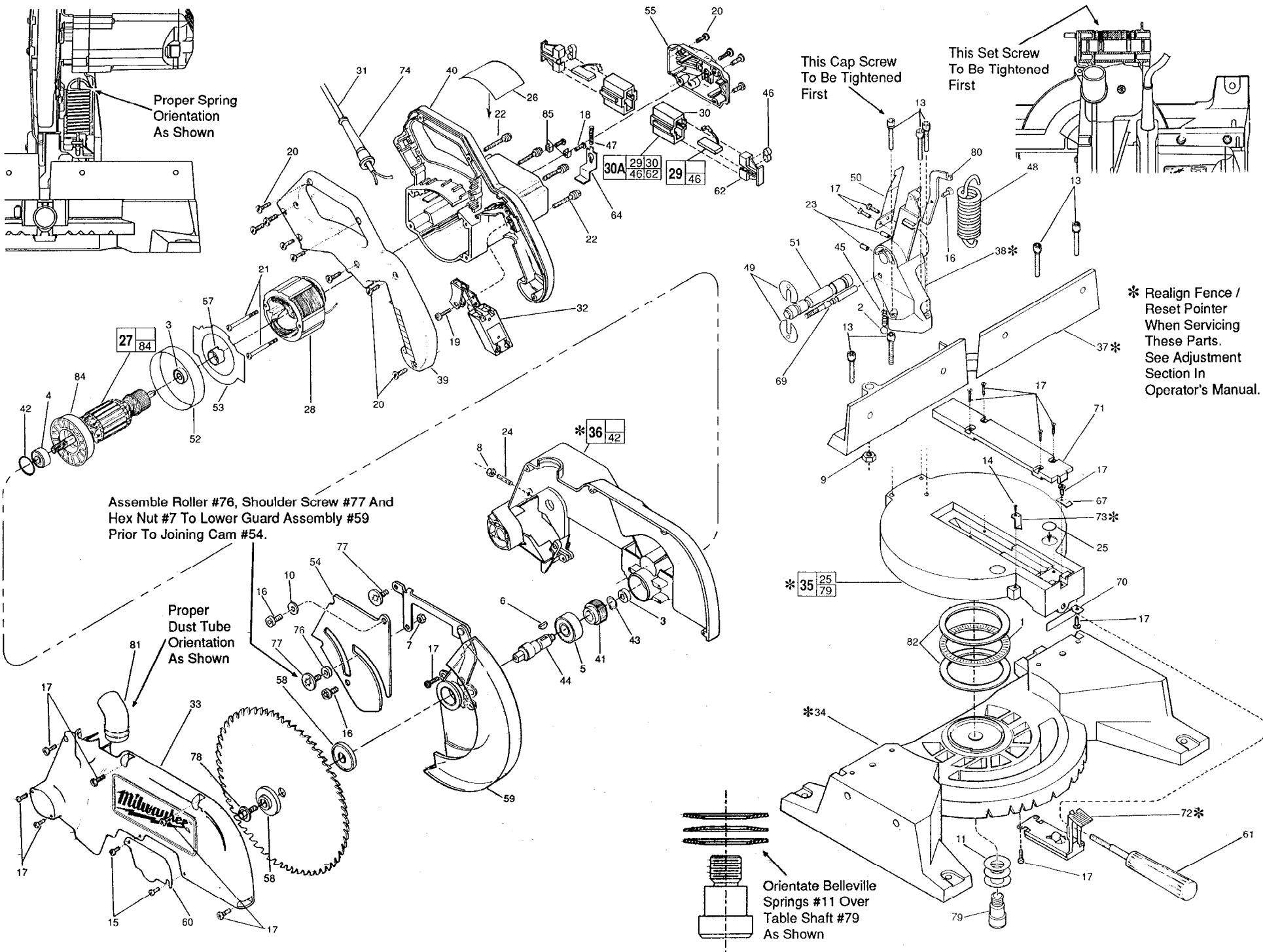


- 46,62 Coil Spring Must Be Oriented In Spring Holder Such That The Saddle Of The Spring Is Facing The Open End Of The Spring Holder.
- 30,62 Spring Holder Must Be Oriented In Brush Tube Such That The Open End Of The Spring Cavity Is Facing The Shunt Slot In Brush Tube.

MILWAUKEE ELECTRIC TOOL CORPORATION
13135 W. LISBON RD., BROOKFIELD, WI 53005



Proper Spring Orientation As Shown



Assemble Roller #76, Shoulder Screw #77 And Hex Nut #7 To Lower Guard Assembly #59 Prior To Joining Cam #54.

Proper Dust Tube Orientation As Shown

This Cap Screw To Be Tightened First

This Set Screw To Be Tightened First

* Realign Fence / Reset Pointer When Servicing These Parts. See Adjustment Section In Operator's Manual.

Orientate Belleville Springs #11 Over Table Shaft #79 As Shown

27 84

*36 42

*35 25 79

30A 29 30 46 62 29 46

17

15

60

17

16

58

78

33

17

10

77

76

54

7

17

59

6

44

5

41

43

3

8

24

8

4

42

4

42

4

4

4

4

4

4

4

4

4

4

4

4

4

4

4

4

4

4

4

4

4

4

4

4

4

4

4

4

4

4

4

4

4

4

4

4

4

4

4

4

4

4

4

4

4

4

4

4

4

4

4

4

4

4

4

4

4

4

4

4

4

4

4

4

4

4

4

4

4

4

4

4

4

4

4

4

4

4

4

4

4

4

4

4

4

4

4

4

4

4

4

4

4

4

4

4

4

4

4

4

4

4

4

4

4

4

4

4

4

4

4

4

4

4

4

4

4

4

4

4

4

4

4

4

4

4

4

4

4

4

4

4

4

4

4

4

4

4

4

4

4

4

4

4

4

4

4

4

4

4

4