



# SERVICE PARTS LIST

**BULLETIN NO.**  
**54-40-6301**

SPECIFY CATALOG NO. AND SERIAL NO. WHEN ORDERING PARTS		REVISED BULLETIN 54-40-6300	DATE May 2006
<b>CORDLESS CIRCULAR SAW</b>		WIRING INSTRUCTION	
CATALOG NO. <b>6310-20</b>	STARTING SERIAL NO. <b>057B</b>	<b>58-01-1365</b>	

**EXAMPLE:**  
00 0 Component Parts (Small #) Are Included  
When Ordering The Assembly (Large #).

★ = Part number change from previous service parts list.

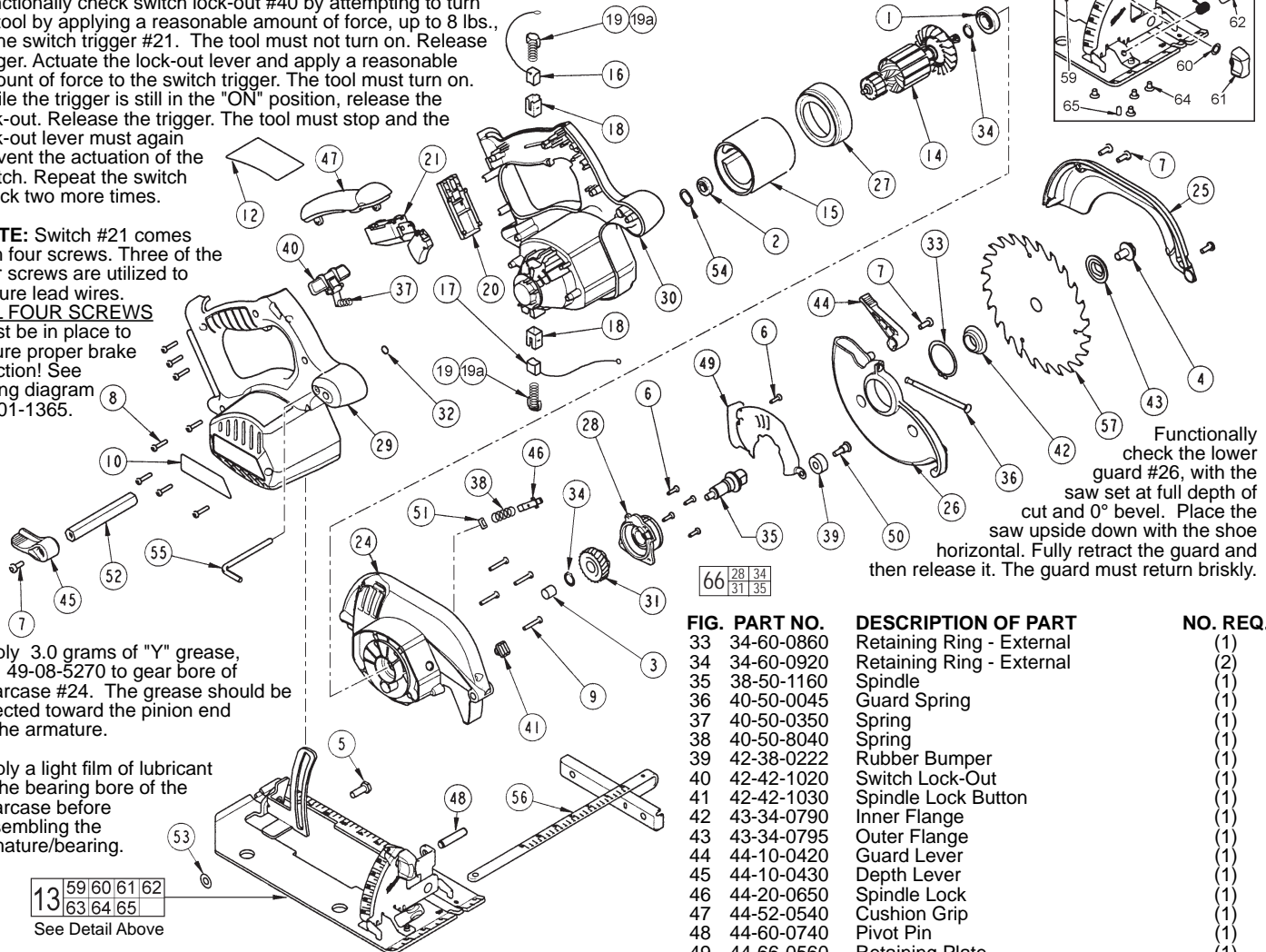
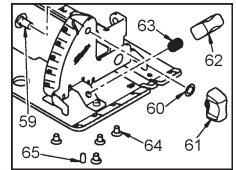
Functionally check switch lock-out #40 by attempting to turn on tool by applying a reasonable amount of force, up to 8 lbs., to the switch trigger #21. The tool must not turn on. Release trigger. Actuate the lock-out lever and apply a reasonable amount of force to the switch trigger. The tool must turn on. While the trigger is still in the "ON" position, release the lock-out. Release the trigger. The tool must stop and the lock-out lever must again prevent the actuation of the switch. Repeat the switch check two more times.

**NOTE:** Switch #21 comes with four screws. Three of the four screws are utilized to secure lead wires. **ALL FOUR SCREWS** must be in place to insure proper brake function! See wiring diagram 58-01-1365.

Apply 3.0 grams of "Y" grease, No. 49-08-5270 to gear bore of gearcase #24. The grease should be directed toward the pinion end of the armature.

Apply a light film of lubricant to the bearing bore of the gearcase before assembling the armature/bearing.

13 59 60 61 62  
63 64 65  
See Detail Above



Functionally check the lower guard #26, with the saw set at full depth of cut and 0° bevel. Place the saw upside down with the shoe horizontal. Fully retract the guard and then release it. The guard must return briskly.

FIG. PART NO.	DESCRIPTION OF PART	NO. REQ.
33	34-60-0860 Retaining Ring - External	(1)
34	34-60-0920 Retaining Ring - External	(2)
35	38-50-1160 Spindle	(1)
36	40-50-0045 Guard Spring	(1)
37	40-50-0350 Spring	(1)
38	40-50-8040 Spring	(1)
39	42-38-0222 Rubber Bumper	(1)
40	42-42-1020 Switch Lock-Out	(1)
41	42-42-1030 Spindle Lock Button	(1)
42	43-34-0790 Inner Flange	(1)
43	43-34-0795 Outer Flange	(1)
44	44-10-0420 Guard Lever	(1)
45	44-10-0430 Depth Lever	(1)
46	44-20-0650 Spindle Lock	(1)
47	44-52-0540 Cushion Grip	(1)
48	44-60-0740 Pivot Pin	(1)
49	44-66-0560 Retaining Plate	(1)
50	45-04-0485 Bumper Screw	(1)
51	45-06-0720 Felt Seal	(1)
52	45-08-0395 Depth Shaft	(1)
53	45-88-1515 Washer	(1)
54	45-88-5615 Wave Spring Washer	(1)
55	49-96-0080 3/16 Hex Key	(1)
56	49-22-1001 Rip Fence	(1)
57	6-1/2 Circular Saw Blade	(1)
59	06-10-0660 1/4-20 x 1/2 Short Neck Carriage Bolt	(1)
60	45-88-1560 Washer	(1)
61	43-98-0730 Bevel Adjustment Knob	(1)
62	43-98-0720 Rip Fence Knob	(1)
63	40-50-0650 Spring	(1)
64	06-82-9605 10-32 x 3/8 CSK Machine Screw T-25	(4)
65	06-83-1600 10-32 x 3/8 Set Screw	(1)
★ 66	14-46-2570 Gear Service Assembly	(1)
	23-94-4260 Red Leadwire Assembly	(1)
	23-94-4270 Black Leadwire Assembly	(1)

**FIG. NOTE:**  
1 Orient the ball bearing so that the seal faces the fan and the open side faces the gearcase.  
3 Press needle bearing flush to .015 sub-flush in gearcase. Position retaining ring with rounded edge facing lower guard.  
46 Functionally check spindle lock. Spindle lock must return briskly when released from engagement in gear.

FIG. PART NO.	DESCRIPTION OF PART	NO. REQ.
1	02-04-1212 Ball Bearing	(1)
2	02-04-5130 Ball Bearing	(1)
3	02-50-1640 Needle Bearing	(1)
4	06-75-1010 Left Hand Screw	(1)
5	06-75-5860 1/4-20 x 3/4 Screw	(1)
6	06-82-5285 6-32 x .5 Pan Hd. Taptite Screw T-15	(5)
7	06-82-5314 10-24 x .5 Pan Hd. Taptite Screw T-25	(5)
8	06-82-7470 Plastite Torx Screw T-15	(8)
9	06-82-7475 Plastite Torx Screw T-15	(4)
10	10-20-6310 Logo Label	(1)
12	12-20-1350 Service Nameplate	(1)
13	14-74-0310 Shoe Assembly	(1)
14	16-01-2111 Armature	(1)
15	18-01-2000 Field	(1)
16	22-18-1120 Brush Assembly - Red	(1)
17	22-18-1125 Brush Assembly - Black	(1)
18	22-20-0425 Brush Tube	(2)
19	22-32-0420 Brush Spring Clip	(2)
19a	40-50-8745 Brush Spring	(2)
20	22-56-0230 Connector Block	(1)
21	23-66-1000 Switch	(1)
24	28-14-0746 Gearcase	(1)
25	28-20-1160 Upper Guard Cover	(1)
26	28-41-0955 Lower Guard	(1)
27	31-05-0350 Baffle	(1)
28	31-15-0601 Gearcase Cover	(1)
29	31-44-1970 Right Handle Halve	(1)
30	31-44-1975 Left Handle Halve	(1)
31	32-75-1370 Spindle Gear	(1)
32	34-40-4480 O-Ring	(1)