

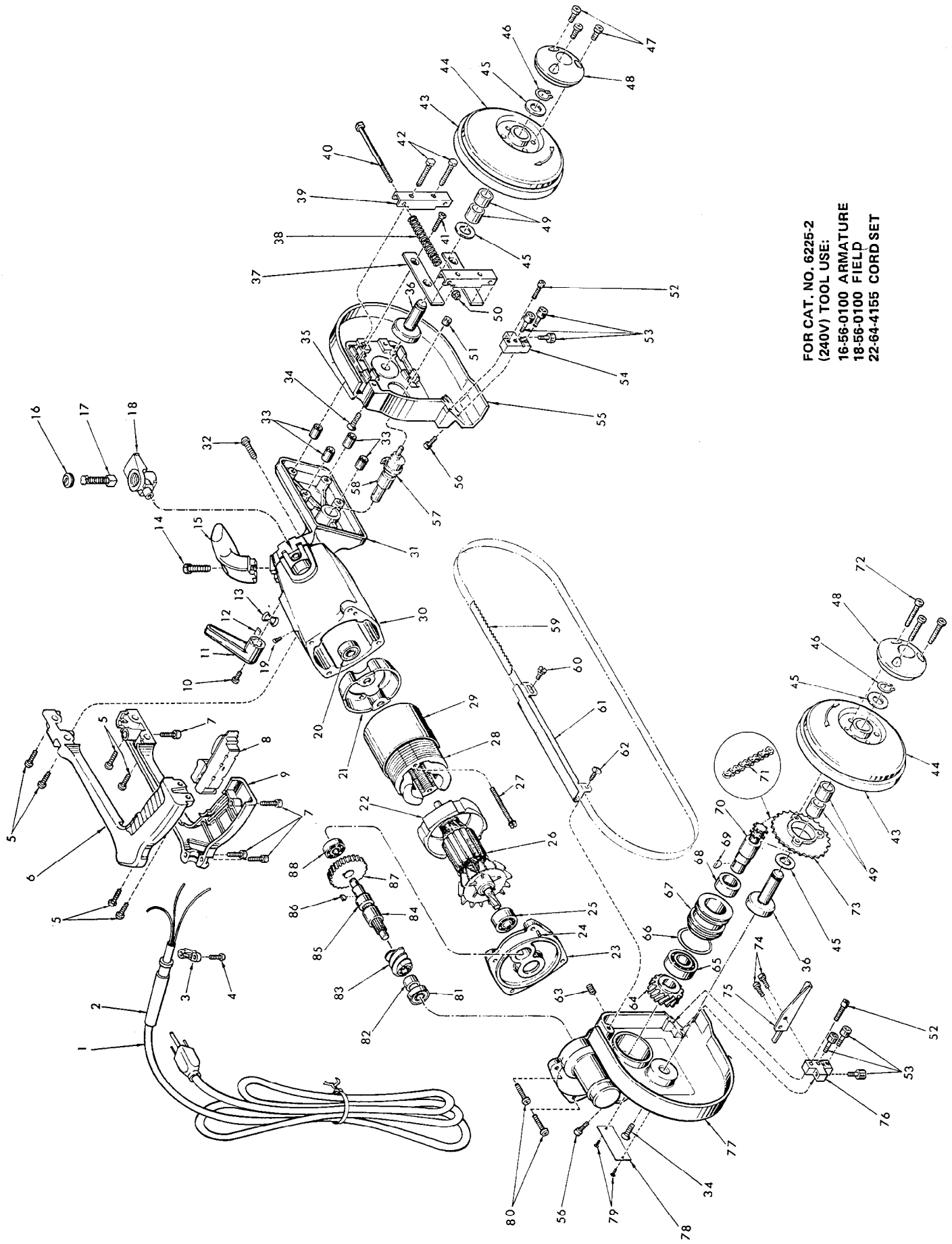


# SERVICE PARTS LIST

**BULLETIN NO.**  
54-40-1204

SPECIFY CATALOG NO. AND SERIAL NO. WHEN ORDERING PARTS		REVISED BULLETIN 54-40-1203	DATE Aug '82
<b>TWO SPEED BANDSAW</b>			
<b>CATALOG NO. 6225</b>		<b>STARTING SERIAL NO. 457-112000</b>	
<b>CAT. NO. 6225-6</b>		<b>START SER. NO. 457-0112000</b>	<b>BILINGUAL LABEL 10-98-6120</b>
<b>WIRING INSTRUCTION 58-01-0721</b>			

FIG.	PART NO.	DESCRIPTION OF PART	NO. REQ.	FIG.	PART NO.	DESCRIPTION OF PART	NO. REQ.
1	22-64-0155	Cord Set	(1)	45	45-88-7165	Pulley Hub Washer	(4)
2	44-76-0120	Cord Protector	(1)	46	34-60-1400	Snap Ring	(2)
★ 3	31-17-0155	Cord Clamp	(1)	47	06-95-0335	1/4-20 x 1/2" Fil. Hd. Taptite Screw	(3)
4	06-95-0216	8-16 x 5/8" Plastite Pan Hd. Screw	(2)	48	28-20-1221	Blade Pulley Cover	(2)
★ 5	06-95-0575	1/4-20 x 7/8" Pan Hd. Screw	(6)	49	42-40-0580	Sleeve Bearing	(4)
6	31-44-0505	Right Handle Half	(1)	50	06-57-5000	1/4-20 Lock Nut	(2)
7	06-95-0216	8-16 x 5/8" Plastite Pan Hd. Screw	(4)	51	02-50-1630	Needle Bearing	(1)
8	23-66-1040	Switch	(1)	52	06-75-2110	10-24 x 7/8" Skt. Hd. Screw	(2)
9	31-44-0515	Left Handle Half	(1)	53	02-25-0260	Cam Follower	(6)
★ 10	06-81-5502	8-32 x 3/8" Binder Hd. Sem.	(1)	54	42-28-0205	Front Blade Guide Block	(1)
★ 11	28-62-0031	Blade Release Lever	(1)	55	28-41-0500	Front Pulley Guard	(1)
★ 12	06-42-2200	Woodruff Key	(1)	56	06-75-2405	10-32 x 5/8" Socket Hd. Screw	(2)
★ 13	45-88-7105	Wave Washer	(1)	★ 57	14-73-0160	Blade Release Shaft Assembly	(1)
14	06-75-4675	3/8-16 x 1" Socket Hd. Screw	(1)	★ 58	02-50-3230	Needle Bearing	(1)
15	31-44-0330	Front Handle	(1)	59	48-39-0360	Bandsaw Blade	(1)
16	23-44-0130	Brush Retaining Screw	(2)	60	45-04-0450	Shoulder Screw	(1)
17	22-18-0450	Carbon Brush Assembly	(2)	61	43-54-0250	Blade Guard	(1)
18	22-22-0285	Brush Holder Assembly	(2)	62	06-81-5692	10-24 x 1/2" Pan Hd. Sem.	(1)
★ 19	06-95-5200	Ground Screw	(1)	63	06-83-2686	1/4-20 x 3/4" Set Screw	(1)
20	02-04-0911	Ball Bearing	(1)	64	32-90-0101	Worm Gear	(1)
★ 21	31-55-0140	Coil Shield	(1)	65	02-04-2000	Ball Bearing	(1)
★ 22	31-05-0170	Fan Baffle	(1)	66	34-40-3115	O-Ring	(1)
23	28-28-1480	Diaphragm	(1)	67	43-76-0360	Worm Gear Shaft Housing	(1)
24	06-65-1206	3/16 x 3/4" Groove Pin	(1)	68	02-50-6400	Needle Bearing	(1)
25	02-04-1040	Ball Bearing	(1)	69	06-42-2200	Woodruff Key	(1)
★ 26	16-50-0100	120V Armature	(1)	70	36-66-0510	Worm Gear Shaft	(1)
★ 27	06-95-3290	8-16 x 1-7/8" Plastite Screw	(2)	★ 71	42-60-0140	Roller Chain	(1)
★ 28	18-50-0100	120V Field	(1)	72	06-81-7875	1/4-20 x 1-1/4" Fil. Hd. Screw	(3)
29	23-16-0425	Field Insulator	(1)	★ 73	31-88-0020	Sprocket	(1)
★ 30	28-50-6240	Motor Housing	(1)	74	06-81-5140	10-24 x 1/2" Button Skt. Hd. Screw	(2)
★ 31	28-90-0190	Pulley Support	(1)	75	42-38-0030	Bumper	(1)
★ 32	06-95-0600	1/4-20 x 1" Pan Hd. Taptite Screw	(4)	76	42-28-0210	Rear Blade Guide Block	(1)
33	45-36-0720	Retaining Plate Spacer	(4)	77	28-14-1380	Gear Case	(1)
34	06-81-3105	5/16-18 x 1" Phil Flat Hd. Screw	(2)	78	12-99-0250	Nameplate Blank	(1)
35	44-52-0120	Blade Backing Pad	(1)	79	06-85-0200	Nameplate Screw	(2)
36	42-12-0070	Blade Pulley Axle	(2)	★ 80	06-95-1800	1/4-20 x 1-5/16" Phil. Drive Screw	(4)
37	44-66-0550	Pulley Guard Retaining Plate	(2)	81	02-04-1030	Ball Bearing	(1)
38	40-50-0710	Blade Tension Spring	(2)	★ 82	45-36-1005	Spacer	(1)
39	42-18-0190	Blade Tension Bar	(2)	83	32-91-0111	Worm	(1)
40	06-75-0255	1/4-20 x 4" Hex. Hd. Screw	(2)	84	45-36-1000	Spacer	(1)
★ 41	06-95-3800	1/4-20 x 1-1/4" Flat Hd. Taptite Screw	(4)	★ 85	36-18-0040	Worm Drive Shaft	(1)
42	06-75-0150	1/4-20 x 1" Hex. Hd. Screw	(2)	86	06-42-1200	Woodruff Key	(1)
43	45-69-0010	Blade Pulley Tire	(2)	87	32-40-1680	Intermediate Gear	(1)
44	28-95-0120	Blade Pulley	(2)	88	02-04-1020	Ball Bearing	(1)



FOR CAT. NO. 6225-2  
 (240V) TOOL USE:  
 16-56-0100 ARMATURE  
 18-56-0100 FIELD  
 22-64-4155 CORD SET