



SERVICE PARTS LIST

BULLETIN NO.
54-40-0310

SPECIFY CATALOG NO. AND SERIAL NO. WHEN ORDERING PARTS		REVISED BULLETIN	DATE
16" CHAIN SAW			Jan. 2000
CATALOG NO. 6215	STARTING SERIAL NUMBER 746-1001	WIRING INSTRUCTION 58-01-0955	

00/0

EXAMPLE:
Component Parts (Small #) Are Included
When Ordering The Assembly (Large #).

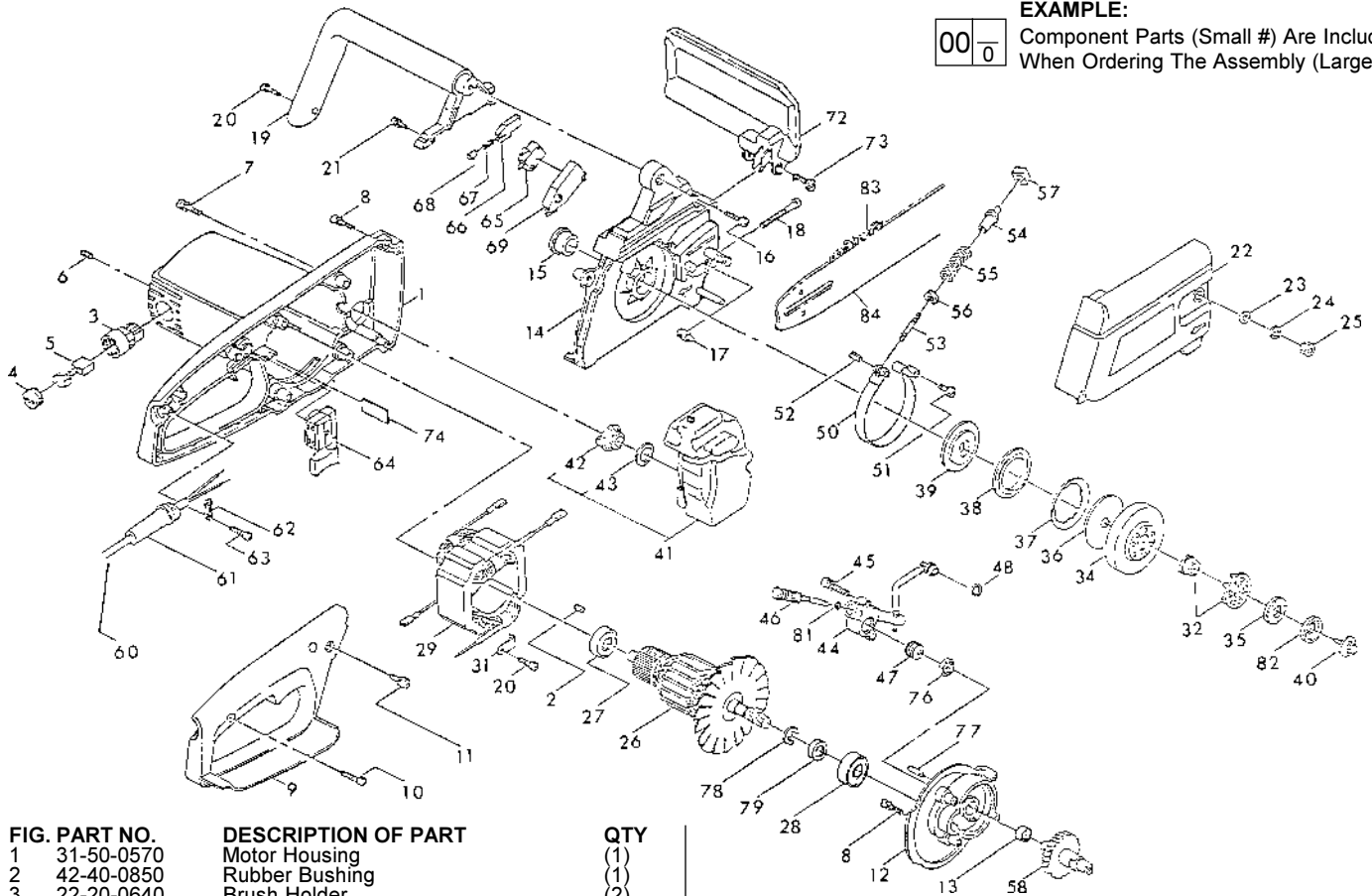


FIG. PART NO.	DESCRIPTION OF PART	QTY
1	31-50-0570 Motor Housing	(1)
2	42-40-0850 Rubber Bushing	(1)
3	22-20-0640 Brush Holder	(2)
4	22-32-0340 Brush Cap	(2)
5	22-16-0320 Brush	(2)
6	05-86-0420 Headless Set Scr 4mm x 10mm x 2mm	(2)
7	05-81-0520 Phillips Pan Hd. Sems 5mm x 20mm	(4)
8	05-81-0421 Phillips Pan Hd. Sems 4mm x 20mm	(6)
9	42-92-0570 Handle Cover	(1)
10	05-78-0420 Phillips Pan Hd. Self Tap. 4mm x 20mm	(4)
11	05-81-0508 Phillips Pan Hd. Sems 5mm x 8mm	(1)
12	28-14-1950 Gear Case	(1)
13	02-04-0699 Ball Bearing 7mm x 19mm x 6mm	(1)
14	28-20-1140 Gear Case Cover	(1)
15	42-24-0340 Sleeve Bearing	(1)
16	05-78-0520 Phillips Pan Hd. Self Tap. 5mm x 20mm	(1)
17	44-60-0710 Slide Pin	(1)
18	05-81-0540 Chain Adjustment Screw 5mm x 40mm	(1)
19	43-62-0950 Top Handle	(1)
20	05-81-0416 Phillips Pan Hd. Self Tap. 4mm x 16mm	(3)
21	05-81-0414 Phillips Pan Hd. Sems 4mm x 14mm	(1)
22	43-72-0160 Bar Holder	(1)
23	45-88-7960 Flat Washer 8mm	(1)
24	45-88-7965 Lock Washer 8mm	(1)
25	05-55-0910 Hex Nut 8mm	(1)
26	16-82-1860 Armature 120 Volt	(1)
27	02-04-1050 Ball Bearing 10mm x 30mm x 9mm	(1)
28	02-04-1240 Ball Bearing 10mm x 32mm x 10mm	(1)
29	18-82-1250 Field 120 Volt	(1)
31	44-86-0470 Field Retainer - (Pkg. of 2)	(1)
32	45-44-0090 Sprocket	(1)
34	43-11-0040 Brake Drum	(1)
35	45-88-7970 Washer	(1)
36	44-66-5370 Clutch Plate	(1)
37	44-66-5375 Disc Spring	(1)
38	42-40-0860 Clutch Disc	(1)
39	43-34-0340 Drive Plate	(1)
40	05-77-1300 Clutch Adj. Bolt Hex Hd. 5mm x 14mm	(1)
41	45-66-0090 Oil Tank (Includes Figs. No. 42 & 43)	(1)
42	42-52-0320 Oil Tank Cap	(1)
43	43-44-0760 Oil Tank Cap Gasket	(1)
44	42-54-0160 Oil Pump Case Assembly	(1)
45	05-81-0420 Phillips Pan Hd. 4mm x 20mm	(2)
46	44-70-0200 Pump Plunger	(1)
47	32-30-0090 Oil Pump Gear	(1)

FIG. PART NO.	DESCRIPTION OF PART	QTY
48	43-44-0770 Oil Pump Gasket	(1)
50	42-16-0130 Brake Band	(1)
51	05-77-1100 Brake Band Bolt Slot Hd. 5mm x 12mm	(1)
52	44-60-0730 Brake Band Pin	(1)
53	44-94-0330 Brake Adjusting Rod	(1)
54	05-89-0035 Brake Adjusting Screw Assembly	(1)
55	40-50-7980 Brake Spring	(1)
56	45-88-7985 Brake Washer	(1)
57	42-28-0260 Brake Block	(1)
58	32-30-0100 Gear Assembly	(1)
60	22-64-2825 Cord Set	(1)
61	44-76-0180 Cord Strain Relief	(1)
62	31-17-0220 Cord Clamp	(1)
63	05-78-0413 Phillips Pan Hd. Self Tap. 4mm x 13mm	(2)
64	23-66-1435 Switch	(1)
65	23-66-1440 Micro Switch	(1)
66	44-10-0220 Switch Lever	(1)
67	40-50-7985 Switch Spring	(1)
68	44-94-0340 Switch Rod	(1)
69	43-76-0460 Switch Housing	(1)
72	42-18-0270 Brake Bar	(1)
73	05-89-0040 Brake Bar Scr Slit Shd Hd 5mmx16mm	(2)
74	44-66-5376 Plate	(1)
76	42-40-0870 Oil Pump Bushing	(1)
77	44-60-0720 Pin	(1)
78	34-60-1000 Snap Ring	(1)
79	42-52-0330 Ring Cap	(1)
81	34-40-4080 O-Ring	(1)
82	45-88-7975 Clutch Screw Washer	(1)
83	48-58-0030 3/8" Pitch Chain	(1)
84	48-09-5050 16" Bar	(1)

NOT SHOWN		
★	49-96-7630 Wrench 13mm	(1)
	49-80-2000 Screwdriver	(1)
	49-62-0150 Scabbard	(1)

MILWAUKEE ELECTRIC TOOL CORPORATION
13135 W. Lisbon Road, Brookfield, WI 53005
Drwg. 3