



SERVICE PARTS LIST

BULLETIN NO.

54-40-0926

SPECIFY CATALOG NO. AND SERIAL NO. WHEN ORDERING PARTS		REVISED BULLETIN	DATE
14" DRY CUT MACHINE		54-40-0925	May 2014
CATALOG NO. 6190-20	STARTING SERIAL NO. 892B	WIRING INSTRUCTION 58-01-0575	



EXAMPLE:
Component Parts (Small #) Are Included
When Ordering The Assembly (Large #).

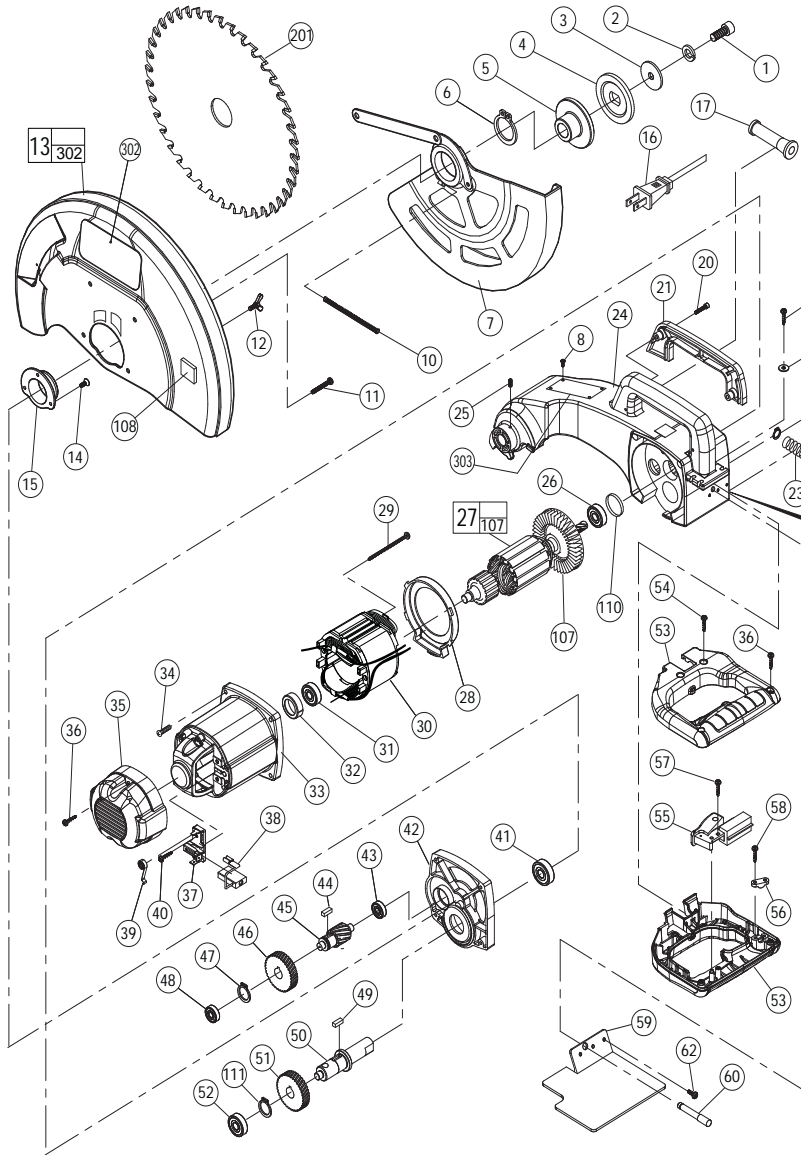


FIG.	PART NO.	DESCRIPTION OF PART	NO REQ.
1	05-74-0040	M10 x 35 Socket Hd. Hex Screw	(1)
2	45-88-1370	Split Washer	(1)
3	45-88-1365	Flat Washer	(1)
4	43-34-0425	Outer Flange	(1)
5	43-34-0430	Inner Flange	(1)
6	05-92-0085	Retaining Ring	(1)
7	43-54-0405	Safety Cover Set	(1)
8	06-72-1720	Service Rivet	(4)
10	40-50-0045	Safety Cover Tension Spring	(1)
11	05-81-0755	M5 x 35 Pan Hd. Screw	(4)
12	05-89-0060	M5 x 6 Thumb Screw	(1)
13	43-54-0385	Blade Cover	(1)
14	05-80-0445	M4 x 10 Counter Sunk Hd. Screw	(3)
15	43-56-0745	Safety Cover Guide	(1)
16	22-64-0800	Cord	(1)
17	44-76-0040	Cord Protector	(1)
18	05-78-0030	TS5 x 20 Tapping Screw	(2)
19	45-88-1025	Flat Washer	(2)
20	05-74-0030	M4 x 16 Socket Hd. Hex Screw	(2)
21	31-44-0170	Handle Cover	(1)
22	05-92-0090	Retaining Ring	(1)
23	40-50-0275	Spindle Lock Spring	(1)
24	31-40-0090	Gear Housing	(1)
25	05-86-0100	M4 x 10 Hex Socket Set Screw	(1)
26	02-04-0060	Ball Bearing	(1)
27	16-70-0530	Service Armature	(1)
28	42-14-0420	Fan Guide	(1)
29	05-78-0035	TS5 x 75 Tapping Screw	(2)
30	18-70-0530	Service Field	(1)
31	02-04-0065	Ball Bearing	(1)
32	42-96-0020	Rubber Cup	(1)
33	28-50-0040	Motor Housing	(1)
34	05-81-0775	M5 x 30 Pan Hd. Screw	(4)
35	42-92-0090	Motor Cover	(1)
36	05-78-0040	TS4 x 18 Tapping Screw	(2)
37	22-20-0025	Carbon Brush Holder	(2)
38	22-16-0045	Carbon Brush	(2)
39	40-50-0280	Brush Spring	(2)
40	05-78-0045	TS4 x 12 Tapping Screw	(4)
41	02-04-0085	Ball Bearing	(1)
42	28-20-0210	Front Cover	(1)
43	02-04-0075	Ball Bearing	(1)
44	43-96-0050	Square Key	(1)
45	36-14-0800	Gear Shaft	(1)
46	32-75-0030	Gear	(1)
47	05-92-0095	Retaining Ring	(1)
48	02-04-1090	Ball Bearing	(1)
49	43-96-0055	Square Key	(1)
50	38-50-0095	Spindle Shaft	(1)
51	32-75-0035	Gear	(1)
52	02-04-0080	Ball Bearing	(1)
53	31-44-0175	D-Handle Halves	(1)
54	05-78-0055	TS4 x 28 Tapping Screw	(2)
55	23-66-1035	Switch (Incl. 4 Screws & Star Washers)	(1)
56	44-76-0045	Strain Relief	(1)
57	05-78-0050	TS4 x 10 Tapping Screw	(1)
58	05-78-0020	TS4 x 14 Tapping Screw	(2)
59	43-54-0395	Chip Shield	(1)
60	44-60-0170	Spindle Lock Pin	(1)
62	05-81-0835	M4 x 12 Pan Hd. Screw	(3)
107	22-84-0090	Fan with Bushing	(1)
108	42-38-0125	Guard Bumper	(1)
110	34-40-6180	O-Ring	(1)
111	34-60-0335	Retaining Ring	(1)
201	-----	14" Dry-Cut Blade	(1)
302	10-15-2560	Logo Label	(2)
303	12-99-6190	Service Nameplate	(1)

NOTE:
If bushing is not present in the replacement Gear Housing (Fig. 24), bushing from the old Housing must be removed and pressed into the new Housing.

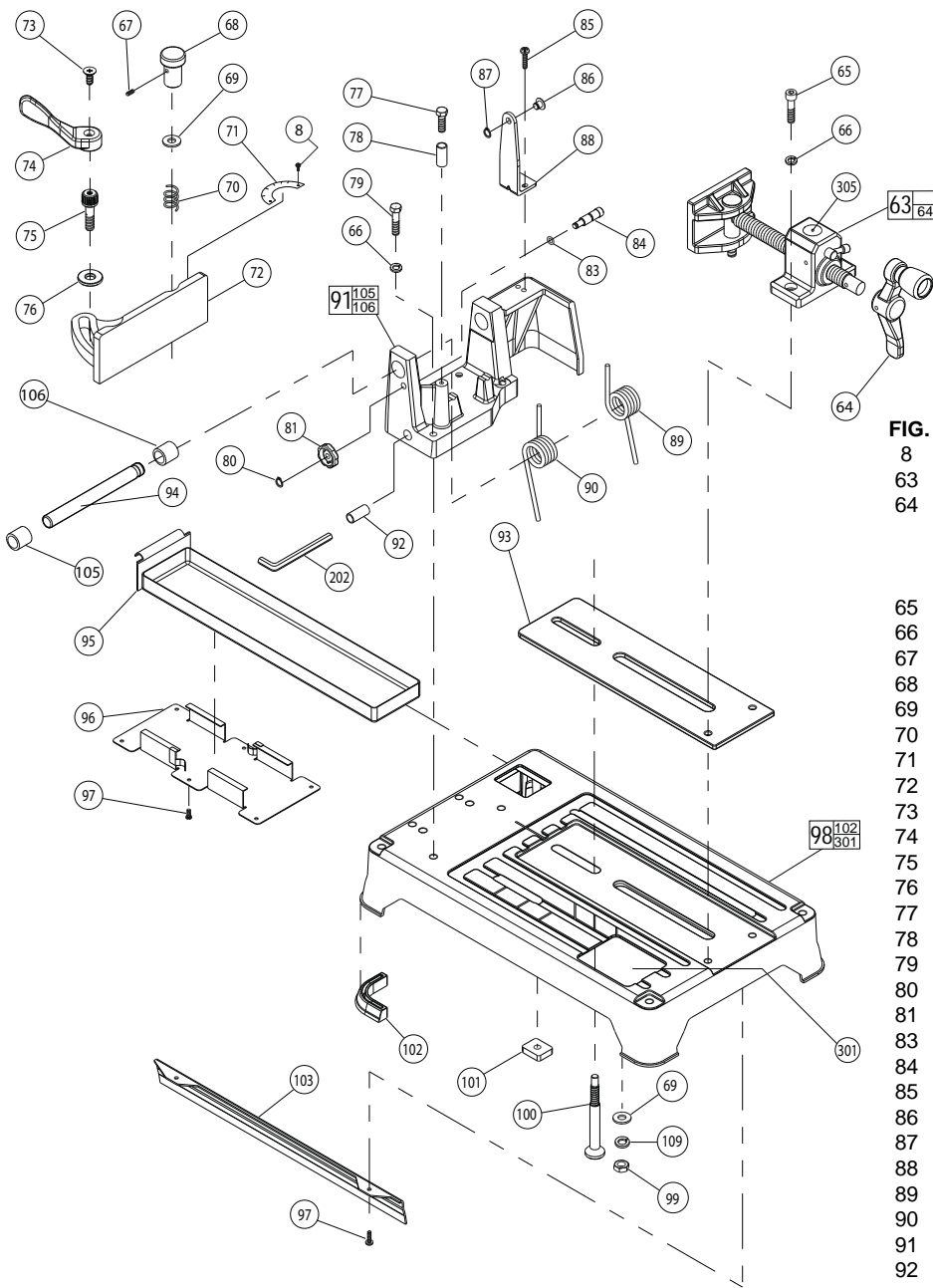
View shown is with the Spindle Lock Pin (Fig. 60), Spring (Fig. 23) and Retaining Ring (Fig. 22) removed for clarity of bushing spacing inside bore.

★ = Part number change from previous service parts list.

FIG. LUBRICATION:
24 Place 3 to 3.25 ounces (85 - 92 grams) of Type 'Y' Grease, No. 49-08-5270, in the gear cavity of the gear housing.

FIG. NOTES:
26 Seal to face spindle gear.
31 Seal to face armature.
32 Place in motor housing prior to inserting armature.

SERVICE TOOLS:
61-10-1025 3/8" Slide Hammer Attachment (1)
61-10-1050 1/2" Slide Hammer Attachment (1)
61-10-1075 1/4" Slide Hammer Attachment (1)



★ = Part number change from previous service parts list.

FIG.	PART NO.	DESCRIPTION OF PART	NO REQ.
8	06-72-1720	Service Rivet	(2)
63	45-84-0120	Service Vise Assembly	(1)
64	45-84-0125	Vise Handle Set (Includes two 1/4-20 Cup Point Set Screws, No. 06-83-6035, threaded into handle collar)	(1)
65	05-74-0035	M8 x 35 Socket Hd. Hex Screw	(2)
66	05-90-0030	Split Washer	(6)
67	05-86-0105	M5 x 6 Hex Socket Set Screw	(1)
68	43-98-0020	Fence Guide Knob	(1)
69	45-88-1355	Flat Washer	(2)
70	40-50-0285	Spring	(1)
71	43-82-0140	Scale Indicator	(1)
72	42-68-0715	Fence Guide	(1)
73	05-80-0440	M6 x 12 Counter Sunk Hd. Screw	(1)
74	44-10-0325	Fence Guide Lever	(1)
75	42-32-0310	Fence Bolt	(1)
76	45-88-1360	Flat Washer	(1)
77	05-75-0010	M8 x 45 Hex Hd. Screw	(1)
78	45-36-0630	Spacer	(1)
79	05-75-0020	M8 x 50 Hex Hd. Screw	(4)
80	05-92-0080	Retaining Ring	(1)
81	31-01-0055	Transportation Lock Handle	(1)
83	34-40-0030	O-Ring	(1)
84	44-50-0100	Transportation Lock Pin	(1)
85	05-81-0735	M5 x 20 Pan Hd. Screw	(2)
86	44-60-1005	Guard Pin	(1)
87	05-92-0100	Retaining Ring	(1)
88	42-36-1765	Guard Linkage Bracket	(1)
89	40-50-0320	Torsion Spring - Right	(1)
90	40-50-0325	Torsion Spring - Left	(1)
91	42-36-1745	Pivot Block with Bushings	(1)
92	22-90-0205	Wrench Holder	(1)
93	44-66-0210	Vise Guide Plate	(1)
94	06-65-3745	Pivot Shaft	(1)
95	44-54-0020	Chip Box	(1)
96	44-66-0215	Chip Box Support Plate	(1)
★ 97	05-78-0410	M4 x 12 Pan Hd. Screw	(8)
98	28-06-1120	Base	(1)
99	05-55-0120	M10 Hex Nut	(1)
100	42-32-0315	Fence Guide Bolt	(1)
101	05-59-0110	Fence Guide Nut	(1)
102	44-34-0210	Rubber Foot	(4)
103	43-54-0350	Base Side Shield	(1)
105	-----	Bushing (20mm) Incl. with Pivot Block	(1)
106	-----	Bushing (22mm) Incl. with Pivot Block	(1)
109	45-88-1370	Split Washer	(1)
202	49-96-0110	8mm Wrench	(1)
301	10-15-0425	Warning Label	(1)
305	10-15-9460	Warning Label	(1)

FIG. NOTES:

- 63,64 Vise handle set includes two (2) 1/4-20 cup point set screws threaded into handle collar.
- 98,102 If replacing the rubber feet, 3M Scotch-Grip® Rubber Cement, No. 44-22-0060, must be used to hold onto the base.