



SERVICE PARTS LIST

BULLETIN NO.
54-40-0654

SPECIFY CATALOG NO. AND SERIAL NO. WHEN ORDERING PARTS		REVISED BULLETIN	DATE
14" Abrasive Cut-Off Machine		54-40-0653	Sept. 2013
CATALOG NO. 6176-20	STARTING SERIAL NO. 968F	WIRING INSTRUCTION	
		58-01-0551	

EXAMPLE:
00 0 Component Parts (Small #) Are Included
When Ordering The Assembly (Large #).

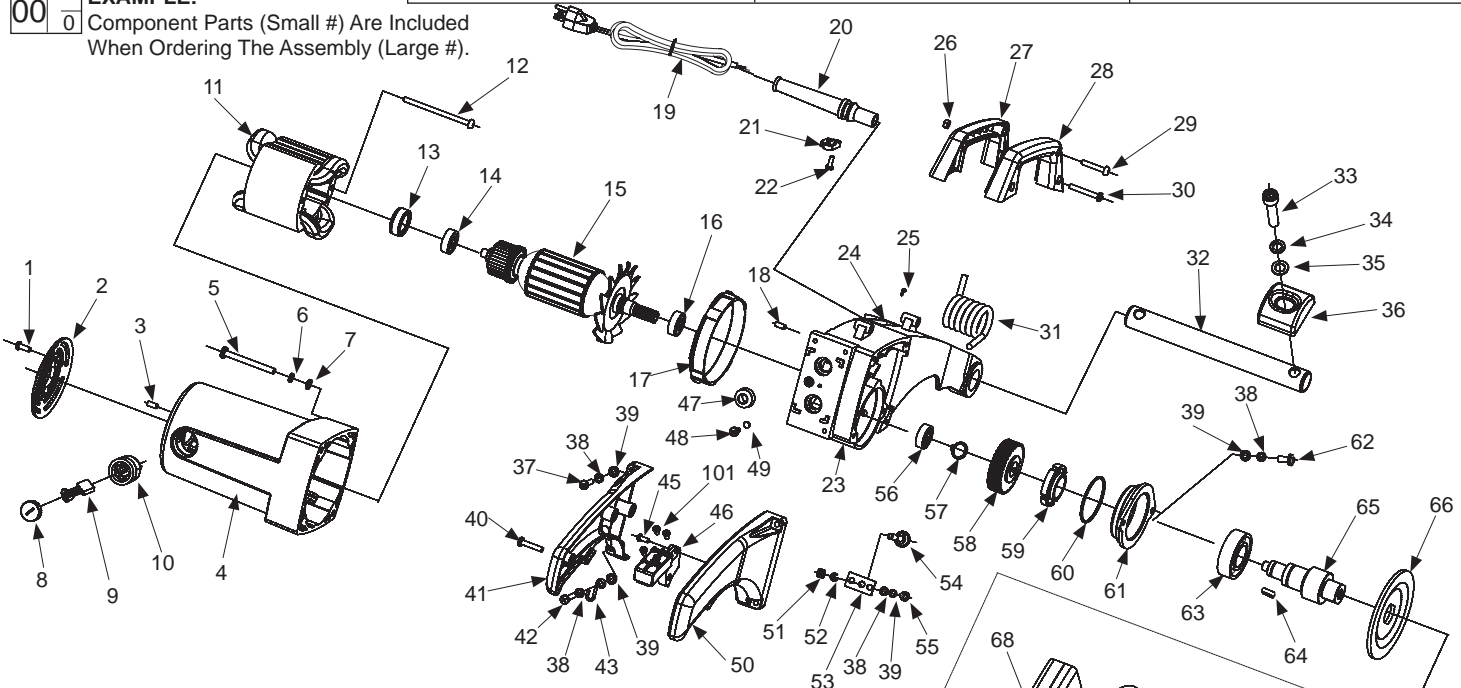


FIG. PART NO.	DESCRIPTION OF PART	NO REQ.
★ 1	05-81-0476 ST5 X 13 ST Screw	2
★ 2	31-15-0515 Rear Cover	1
★ 3	05-81-0495 M5X10 Clamp Screw	2
★ 4	31-50-0025 Motor Housing	1
★ 5	05-81-0521 M6 X 60 Pan Head Screw	4
★ 6	05-90-0185 M6 Spring Washer	8
★ 7	45-88-8495 M6 Washer	8
★ 8	22-24-0027 Brush Holder Cap	2
★ 9	22-16-0036 Carbon Brush	2
★ 10	22-20-0017 Brush Holder	2
★ 11	18-82-0100 Field	1
★ 12	05-81-0681 ST5 X 80 ST Screw	2
13	45-22-0725 Rubber Sleeve	1
★ 14	02-04-0016 Bearing	1
★ 15	16-82-0200 Armature	1
★ 16	02-04-0026 Bearing	1
★ 17	31-05-0016 Fan Baffle	1
★ 18	44-60-1900 Rubber Pin	1
★ 19	22-64-1432 Cord Set	1
★ 20	44-76-0061 Cord Protector	1
21	44-76-0065 Cord Clamp	1
22	05-78-0015 M4X12 Screw	2
★ 23	28-50-0020 Gear Case	1
★ 24	12-99-3355 Nameplate	1
25	06-72-1720 Nameplate Rivet	4
26	05-55-0030 Hex Nut 5MM	2
★ 27	31-44-0016 Carrying Handle - Left	1
★ 28	31-44-0026 Carrying Handle - Right	1
★ 29	05-81-0776 ST4 X 22 ST Screw	2
★ 30	05-81-0811 M5 X 31 Pan Head Screw	2
31	40-50-0115 Torsion Spring	1
32	06-65-0015 Hinge Core	1
33	05-75-0045 M10X45 Socket Head Bolt	2
34	05-90-0175 M10 Spring Lockwasher	4
★ 35	45-88-8421 M10 Washer	5
36	42-36-0035 Hinge Core Cover	2
★ 37	05-81-0522 M5 X 20 Pan Head Screw	3
★ 38	05-90-0190 M5 Spring Washer	10
★ 39	45-88-8485 M5 Washer	10
★ 40	05-81-0791 ST5 X 20 ST Screw	3
★ 41	31-44-0038 Operating Handle - Left	1
42	05-81-0790 Pan Head Screw M5X25	1
★ 43	43-74-0015 Chain Hook	1
★ 45	05-78-0426 ST4 X 10 ST Screw	2
★ 46	23-66-1060 Switch	1
★ 47	44-76-0104 Rubber Protector	2
★ 48	05-81-0805 Pan Head Screw M4X10	1
49	05-90-0010 Star Washer M4	1
★ 50	31-44-0032 Operating Handle - Right	1

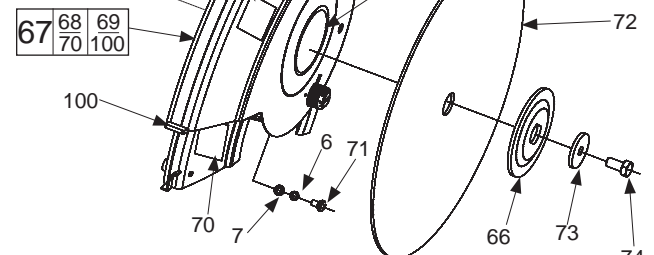


FIG. PART NO.	DESCRIPTION OF PART	NO REQ.
67	40-50-0135 Spring	1
68	34-60-0015 M5X0.8 E Clamp	1
69	42-36-0056 Locker Plate	1
70	44-60-0061 Locking Pin	1
★ 53	05-81-0431 M5 X 10 Pan Head Screw	4
★ 54	02-04-0036 Bearing	1
★ 55	05-92-0056 M17 Retainer	1
★ 56	32-75-0016 Gear	1
★ 57	42-74-0063 Locking Cog	1
★ 58	34-40-0090 O Ring	1
★ 59	43-34-0900 Flange	1
★ 60	05-81-0120 M5 x 16 Pan Head Screw	2
★ 61	02-04-0046 Bearing	1
★ 62	05-42-0016 4 x 4 x 12 Key	1
★ 63	38-50-0056 Spindle	1
★ 64	43-34-0905 Flange	2
★ 65	43-54-0015 Safety Cover Assembly	1
★ 66	10-20-3055 Warning Label	1
★ 67	10-15-6176 Rotation Label	1
★ 68	Logo Label	1
★ 69	05-81-0441 M6 X 10 Pan Head Screw	4
70	----- Abrasive Wheel	1
71	----- Flat Washer	1
72	45-88-0015 M10X20 Hex Head Screw	3
73	----- Rubber Bumper	1
74	05-78-0305 Switch Screw	4
★ 100	23-74-2430 Terminal	1
★ 101	23-74-0840 Terminal	1

SEE BACK PAGE FOR SERVICE AND LUBRICATION NOTES

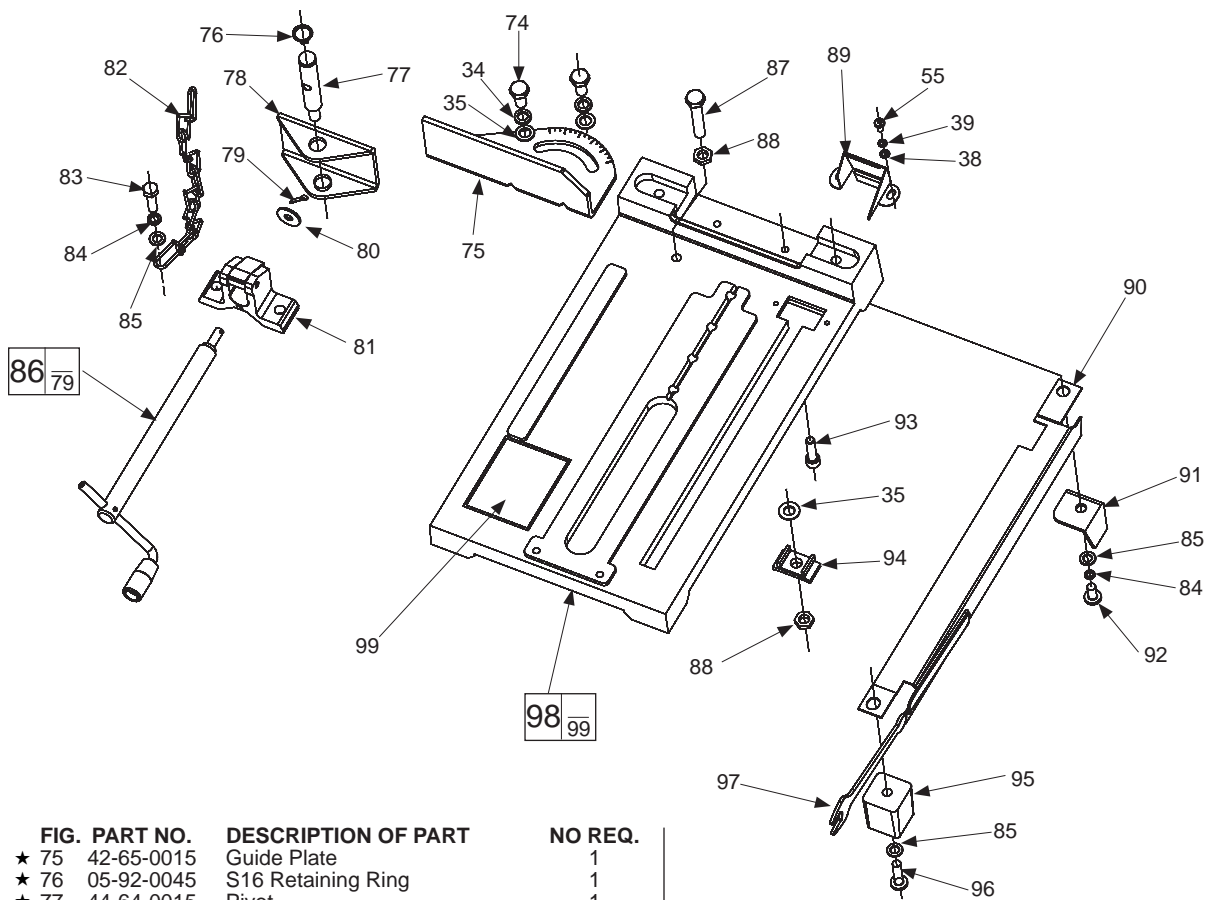


FIG.	PART NO.	DESCRIPTION OF PART	NO REQ.
★	75	42-65-0015 Guide Plate	1
★	76	05-92-0045 S16 Retaining Ring	1
★	77	44-64-0015 Pivot	1
★	78	44-66-0015 Vise Plate	1
★	79	06-65-0017 3.2 X 18 Opening Clip	1
★	80	45-88-0745 8X16X0.6 Washer	1
★	81	44-40-0015 Vise	1
★	82	42-60-0025 Chain	1
★	83	05-75-0026 M8 X 30 Hex Head Bolt	2
★	84	05-90-0030 Spring Washer M8	3
★	85	45-88-0025 8X16X1 Washer	6
★	86	45-84-0017 Turning Handle Set	1
★	87	05-75-0035 M10X55 Hex Head Bolt	1
★	88	05-55-0015 M10 X 17 Nut	2
★	89	43-54-0045 Chip Protector	1
★	90	43-77-0020 Wrench Holder	1
★	91	44-04-0015 Iron Foot	1
★	92	05-81-0905 M8X16 Pan Head Screw	1
★	93	05-75-0030 M 8x30 Bolt	2
★	94	42-68-0025 Vise Guide	1
★	95	44-34-0015 Rubber Foot	3
★	96	05-81-0900 M8 X 30 Pan Head Screw	3
★	97	51-96-6176 Bulk Spanner Wrench	1
★	98	31-06-0015 Base	1
★	99	10-15-0425 Warning Label	1

FIG. LUBRICATION:

23 Place 1 to 1.25 ounces (28 - 35 grams) of Type "Y" Grease, No. 49-08-5270, in the gear cavity of the gear case.

NOTES:

16 Seal to face spindle gear.

14 Seal to face armature.

13 Place in motor housing prior to inserting armature.