



# SERVICE PARTS LIST

**BULLETIN NO.**  
54-38-0477

SPECIFY CATALOG NO. AND SERIAL NO. WHEN ORDERING PARTS		REVISED BULLETIN 54-38-0476	DATE Aug. '98
<b>4-1/2" ANGLE GRINDER</b>			
CATALOG NO. 6151	STARTING SERIAL NUMBER	868D	
WIRING INSTRUCTION			

**EXAMPLE:**



Component Parts (Small #) Are Included When Ordering The Assembly (Large #).

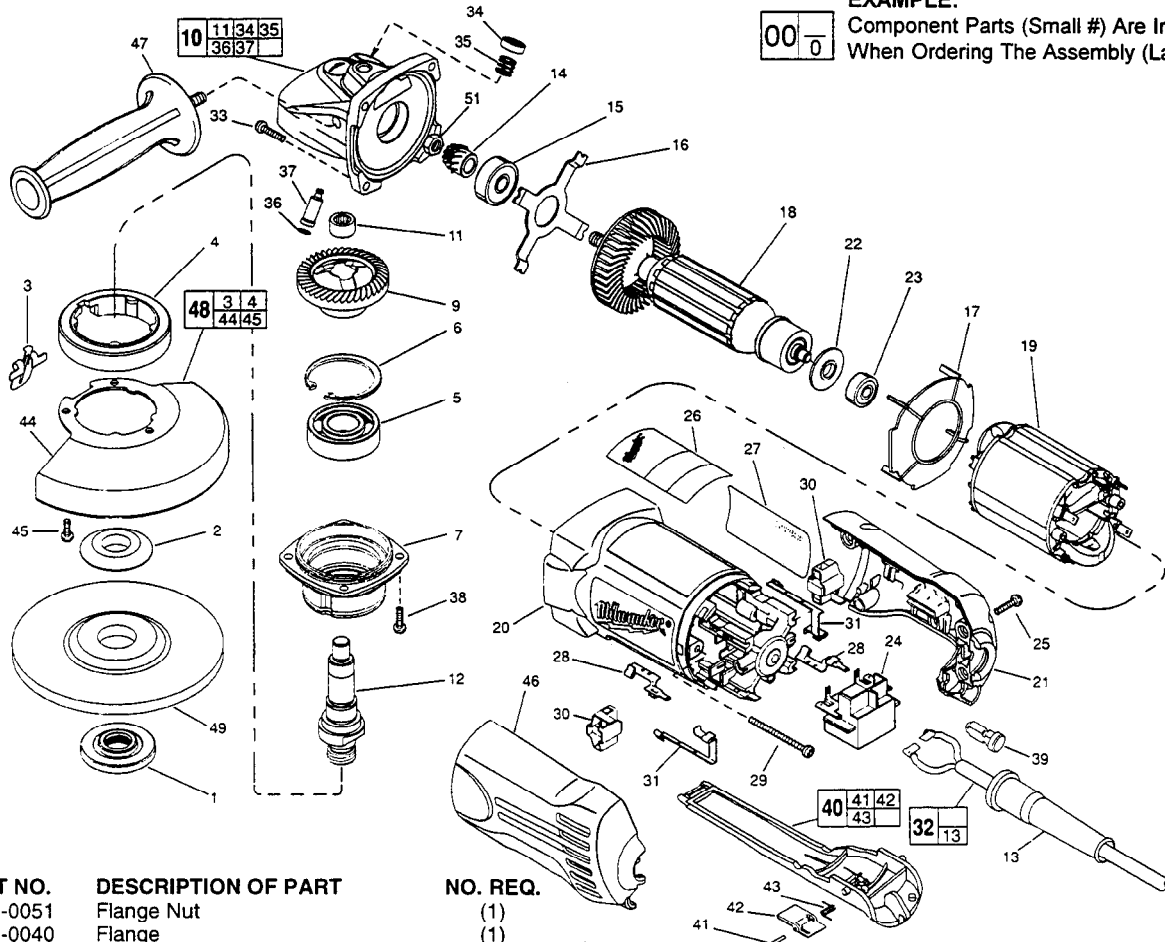


FIG.	PART NO.	DESCRIPTION OF PART	NO. REQ.
	1	49-05-0051 Flange Nut	(1)
	2	49-05-0040 Flange	(1)
	3	44-20-0325 Lock Lever	(1)
	4	45-36-1551 Spacer	(1)
★	5	02-04-1745 Ball Bearing	(1)
	6	34-80-2960 Retaining Ring - Internal	(1)
★	7	28-52-0222 Spindle Hub	(1)
	9	32-05-1310 P.M. Gear	(1)
	10	25-14-2350 Gear Case Assembly	(1)
	11	02-50-2423 Needle Bearing	(1)
	12	38-50-5202 Spindle	(1)
	13	44-76-0210 Cord Protector	(1)
	14	32-60-1310 Pinion Gear	(1)
	15	02-04-2075 Ball Bearing	(1)
	16	44-66-5345 Bearing Retainer Plate	(1)
	17	42-14-0400 Baffle	(1)
	18	16-07-0126 Armature	(1)
	19	18-07-0125 Field	(1)
	20	31-50-1100 Motor Housing	(1)
	21	31-15-0450 Right Cover	(1)
	22	23-16-0916 Commutator Insulator	(1)
	23	02-04-2080 Ball Bearing	(1)
	24	23-66-2401 Switch	(1)
	25	06-82-7271 6-19 x 7/8" Pan Hd. Plastite T-15	(4)
	26	12-20-1100 Service Nameplate Kit	(1)
	27	10-98-7090 Warning Label	(1)
	28	23-74-1206 Brush Terminal	(2)
	29	06-82-7420 6-19 x 2-3/4" Pan Hd. Slit. Plast. T-15	(2)
	30	22-20-0555 Brush Holder Assy. (incl. Carbon Brush)	(2)
	31	23-74-1201 Switch Terminal	(2)
	32	22-64-0840 Cord Set Assembly	(1)
	33	06-82-7326 8-16 x 1" Pan Hd. Slit. Plast. T-20	(4)
	34	31-12-0205 Cap	(1)
	35	40-50-8650 Compression Spring	(1)
	36	34-40-4300 O-Ring	(1)

FIG.	PART NO.	DESCRIPTION OF PART	NO. REQ.
	37	44-60-0845 Lock Pin	(1)
	38	06-82-5316 8-32 x 1/2" Pan Hd. Slit. Tapt. T-20	(4)
	39	31-53-0112 Plug	(1)
	40	31-92-0320 Paddle Assembly	(1)
	41	06-65-1915 Pin	(1)
	42	42-42-0390 Lock-Off Button	(1)
	43	40-50-8750 Torsion Spring	(1)
★	44	28-41-1020 Hood	(1)
	45	06-82-7251 8-16 x 3/8" Pan Hd. Slit. Plast. T-20	(3)
	46	31-15-0455 Left Cover	(1)
	47	49-15-0310 Side Handle	(1)
★	48	49-12-0365 Guard Assembly	(1)
	49	----- 4-1/2" Disc - Select From Catalog	(1)
	51	06-55-3850 10-32 Hex Nut	(1)
★	49-96-7205	Spanner Wrench	(1)

**FIG. LUBRICATION:**  
9,14 Type "O" Grease, No. 49-08-4200, Must Be Applied To All Gear Teeth.  
10 18-21 Grams Type "O" Grease, No. 49-08-4200.

**FIG. NOTES:**  
7 Position The Spindle Hub With The Side That Has The Word "Back" Orientated Toward The Rear Of The Tool. Press .09" Below Casting Surface.  
11 Tuck All Cord Leads Away From Vent Openings.  
51 Torque To 25-35 In./Lbs.