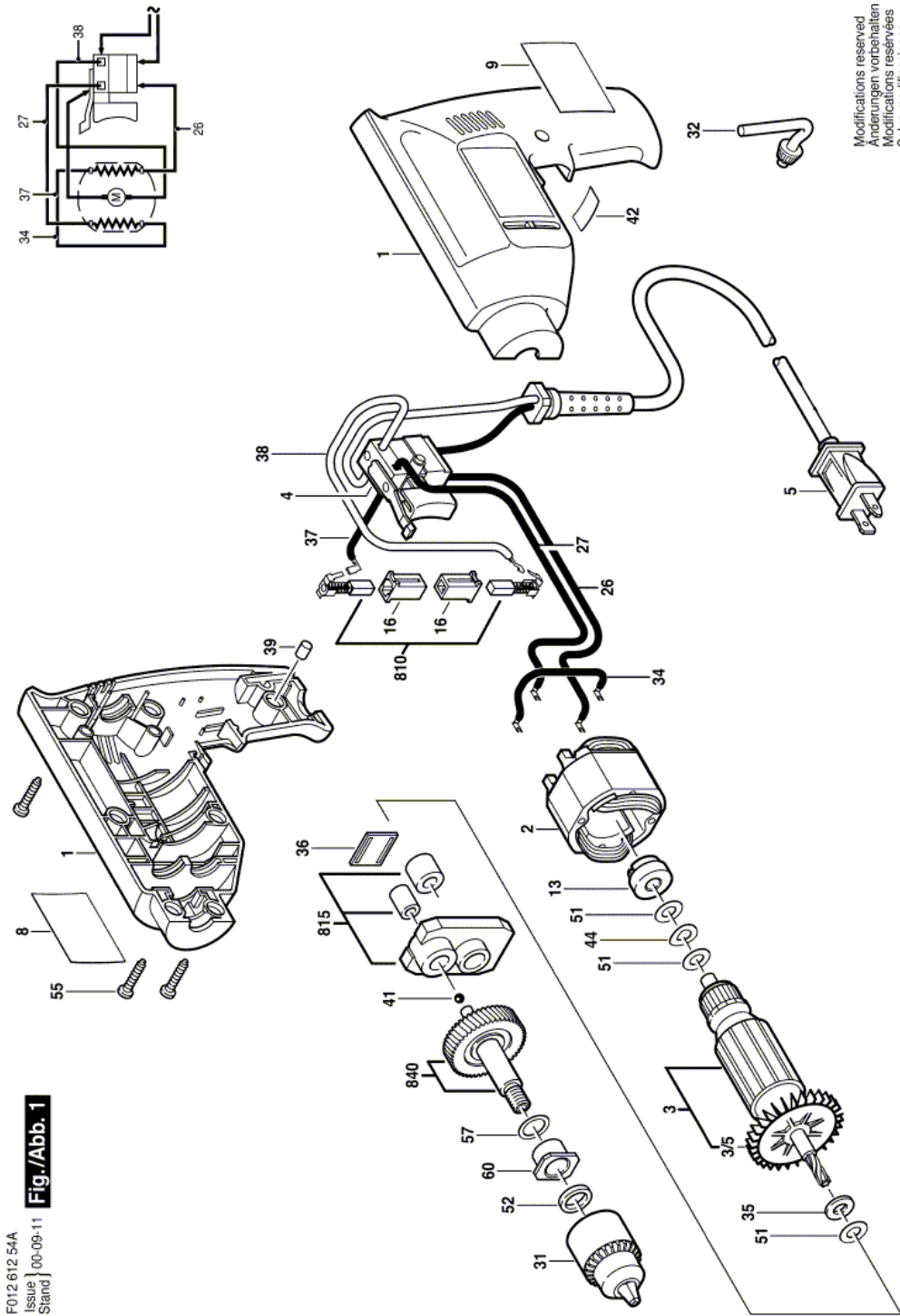


Drill - F 012 612 54A - 6125

| Item | Part Number | Description | Illustration | Price | Quantity | Price Group |
|------|---------------|------------------------------|--------------|-------|----------|-------------|
| 1 | 2 610 910 187 | Housing Set | 1 | -,- | 1 | - |
| 2 | 2 610 315 863 | Field 120V | 1 | -,- | 1 | 28 |
| 3 | 2 610 350 131 | Armature 120V | 1 | -,- | 1 | 33 |
| 3/5 | 2 610 346 332 | Fan | 1 | -,- | 1 | - |
| 4 | 2 610 346 603 | On-Off Switch | 1 | -,- | 1 | 26 |
| 5 | 1 619 X00 506 | Power supply cord | 1 | -,- | 1 | - |
| 8 | 2 610 990 571 | Nameplate | 1 | -,- | 1 | - |
| 9 | 2 610 991 962 | Reference Plate | 1 | -,- | 1 | 15 |
| 13 | 2 610 351 348 | Bushing | 1 | -,- | 1 | 13 |
| 16 | 2 610 320 548 | Brush Holder | 1 | -,- | 2 | 13 |
| 26 | 2 610 038 675 | Connecting Cable | 1 | -,- | 1 | - |
| 27 | 2 610 038 922 | Connecting Cable BROWN | 1 | -,- | 1 | - |
| 31 | 2 610 907 640 | Chuck | 1 | -,- | 1 | 30 |
| 32 | 2 610 315 835 | Key | 1 | -,- | 1 | 19 |
| 34 | 2 610 038 609 | Connecting Wire BLACK | 1 | -,- | 1 | 11 |
| 35 | 2 610 346 380 | Washer | 1 | -,- | 1 | 11 |
| 36 | 2 610 347 349 | Reference Plate | 1 | -,- | 1 | 15 |
| 37 | 2 610 039 904 | Connecting Wire 130 MM BLACK | 1 | -,- | 1 | 11 |
| 38 | 2 610 320 494 | Connecting Wire 50 MM | 1 | -,- | 1 | 11 |
| 39 | 2 610 028 780 | Plug | 1 | -,- | 1 | 11 |
| 41 | 2 610 002 144 | Ball | 1 | -,- | 1 | 11 |
| 42 | 2 610 902 145 | Reference Plate | 1 | -,- | 1 | 15 |
| 44 | 2 610 026 126 | Washer | 1 | -,- | 1 | 11 |
| 51 | 2 610 027 396 | Washer | 1 | -,- | 3 | 11 |
| 52 | 2 610 017 642 | Washer | 1 | -,- | 1 | 10 |
| 55 | 1 619 X00 504 | Screw | 1 | -,- | 7 | 10 |
| 57 | 2 610 347 358 | Washer | 1 | -,- | 1 | 11 |
| 60 | 2 610 352 019 | Flanged Bearing | 1 | -,- | 1 | 11 |
| 810 | 2 610 321 617 | Carbon-Brush Set | 1 | -,- | 1 | 24 |
| 815 | 2 610 347 363 | Bearing Housing | 1 | -,- | 1 | 21 |
| 840 | 2 610 993 502 | Spindle | 1 | -,- | 1 | 21 |

Illustration - Type E



F012 612 54A
Issue | 00-09-11
Stand | **Fig./Abb. 1**

Modifications reserved
Änderungen vorbehalten
Modificaciones reservadas
Salvo modificaciones

Information subject to change without further notice.