



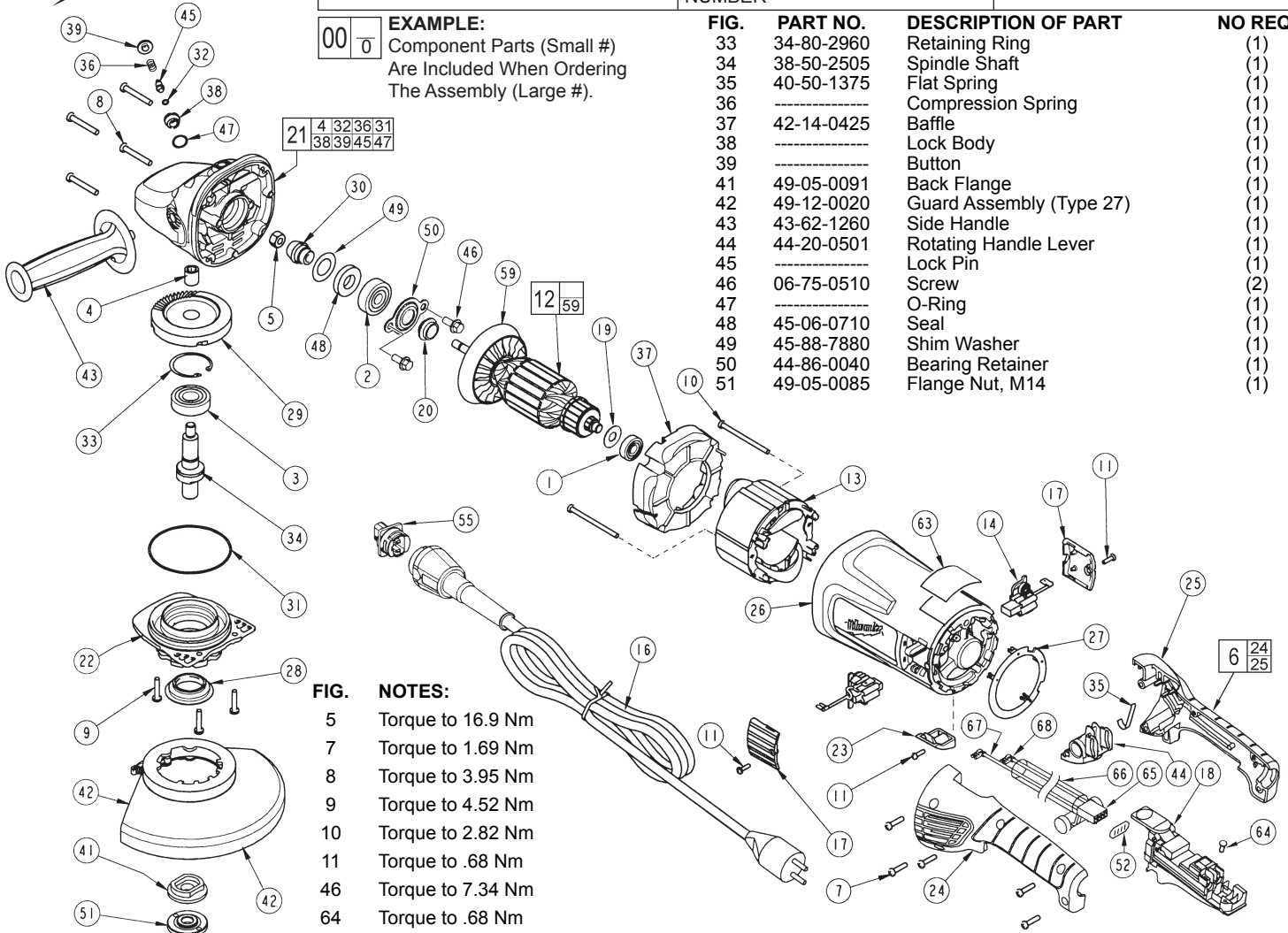
# SERVICE PARTS LIST

**BULLETIN NO.**  
**55-38-1826**

SPECIFY CATALOG NO. AND SERIAL NO. WHEN ORDERING PARTS			REVISED BULLETIN	DATE
<b>9" GRINDER</b>			55-38-1825	Aug. 2005
<b>CATALOG NO.</b>	<b>6090-50</b>	<b>SERIAL NUMBER</b>	<b>WIRING INSTRUCTION</b> <b>58-03-1376</b>	
			<b>A14B</b>	

**EXAMPLE:**  
Component Parts (Small #)  
Are Included When Ordering  
The Assembly (Large #).

FIG.	PART NO.	DESCRIPTION OF PART	NO REQ.
33	34-80-2960	Retaining Ring	(1)
34	38-50-2505	Spindle Shaft	(1)
35	40-50-1375	Flat Spring	(1)
36	-----	Compression Spring	(1)
37	42-14-0425	Baffle	(1)
38	-----	Lock Body	(1)
39	-----	Button	(1)
41	49-05-0091	Back Flange	(1)
42	49-12-0020	Guard Assembly (Type 27)	(1)
43	43-62-1260	Side Handle	(1)
44	44-20-0501	Rotating Handle Lever	(1)
45	-----	Lock Pin	(1)
46	06-75-0510	Screw	(2)
47	-----	O-Ring	(1)
48	45-06-0710	Seal	(1)
49	45-88-7880	Shim Washer	(1)
50	44-86-0040	Bearing Retainer	(1)
51	49-05-0085	Flange Nut, M14	(1)



- FIG. NOTES:**
- 5 Torque to 16.9 Nm
  - 7 Torque to 1.69 Nm
  - 8 Torque to 3.95 Nm
  - 9 Torque to 4.52 Nm
  - 10 Torque to 2.82 Nm
  - 11 Torque to .68 Nm
  - 46 Torque to 7.34 Nm
  - 64 Torque to .68 Nm

FIG.	PART NO.	DESCRIPTION OF PART	NO REQ.
1	02-04-1675	Ball Bearing	(1)
2	02-04-1680	Ball Bearing	(1)
3	02-04-1745	Ball Bearing	(1)
4	02-50-2429	Needle Bearing	(1)
5	06-55-2455	Hex Nut	(1)
6	14-34-0580	Handle Kit	(1)
7	06-82-0055	8-16 Torx Plastite Screw T-20	(5)
8	06-82-0060	10-14 Torx Plastite Screw T-25	(4)
9	06-82-0065	10-32 x 1 Pan Hd. Taptite T-25 Screw	(3)
10	06-82-0070	8-16 Torx Plastite Screw T-15	(2)
11	06-82-7240	6-19 x 1/2 Sit. Pan Hd. Plast. T-15	(3)
12	16-74-0120	Armature Assembly	(1)
13	18-74-1125	Field	(1)
14	22-20-2230	Brush Holder Assembly	(2)
16	22-64-3610	Quik-Lok Cord Set	(1)
17	23-44-0255	Brush Cover	(2)
18	23-66-2671	Switch	(1)
19	45-06-0830	Bearing Seal	(1)
20	31-55-0290	Dust Shield	(1)
21	28-14-1146	Gearcase Assembly	(1)
22	28-53-0151	Spindle Hub Kit	(1)
23	31-15-0166	Cover	(1)
24	-----	Left Hand Handle Halve	(1)
25	-----	Right Hand Handle Halve	(1)
26	31-50-1785	Motor Housing Assembly	(1)
27	31-53-0160	Plug	(1)
28	31-55-0150	Bearing Shield	(1)
29	32-05-1505	Gear	(1)
30	32-60-1505	Pinion Gear	(1)
31	34-40-0505	O-Ring	(1)
32	-----	O-Ring	(1)

FIG.	PART NO.	DESCRIPTION OF PART	NO REQ.
52	45-06-0700	Foam Contamination Pad	(1)
55	22-56-1055	Blade Housing Assembly	(1)
59	22-84-0540	Fan Assembly	(1)
63	12-99-9090	Nameplate Blank	(1)
64	05-78-0250	Switch Screw	(2)
65	23-94-2626	Harness and Resistor Assembly	(1)
66	23-48-0160	Sleeve	(1)
67	23-94-9311	Wire (See 58-03-1376)	(1)
68	23-94-9316	Wire (See 58-03-1376)	(1)
	23-94-9301	Wire (Not Shown - See 58-03-1376)	(1)
	23-94-9306	Wire (Not Shown - See 58-03-1376)	(1)
	49-96-7210	Spanner Wrench (Not Shown)	(1)

**FIG. LUBRICATION:**  
21 1.25 oz. (35 grams) of Type "Y" grease, No. 49-08-5270 in main gear cavity of gearcase.

29,30 "Y" grease must be applied to all gear teeth.  
31,32 Lightly coat o-rings with "Y" grease prior to installation.

**FIG. NOTES:**  
4,21 Press needle bearing flush ±.02 to gearcase boss face.  
33 Bevel side of retaining ring away from bearing face.  
52 Foam pad has an adhesive backing, place over switch terminals and press onto switch.

**MILWAUKEE ELECTRIC TOOL CORPORATION**  
13135 W. LISBON RD., BROOKFIELD, WI 53005