



# SERVICE PARTS LIST

**BUL. 54-38-3200**

**6000 R.P.M. 7" SANDER-GRINDER**

REVISED BUL  DATE  
Feb. '72

**Catalog No. 6085**

Starting  
Serial No. **461-1001**

WIRING INSTR.  
**58-01-0311**

Both Model and Serial No. must be furnished to obtain correct parts.

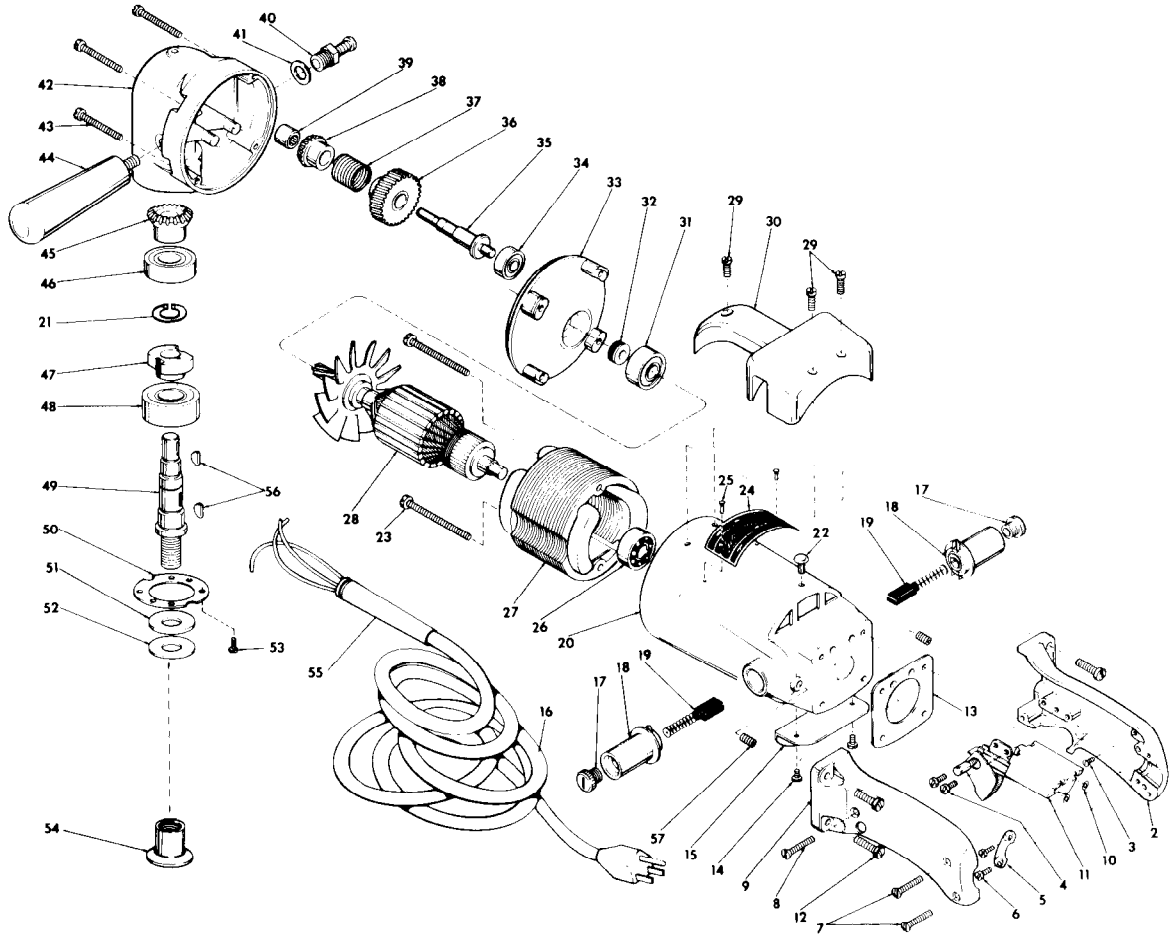


FIG.	PART NO.	DESCRIPTION OF PART	NO.REQ.	FIG.	PART NO.	DESCRIPTION OF PART	NO.REQ.
★ 1	28-44-1043	Switch Handle Assembly (includes Fig. Nos. 2, 7, 8 and 9)		28	16-82-1715	115 Volt Armature	
2	—	Handle (Switch Mount Side)		29	06-81-6950	10-24x1/2 Fil.Hd. Sem	(3)
3	06-81-8625	6-32x1/4 Ground Screw		30	31-70-0100	Tool Rest	
4	06-81-5400	8-32x5/16 Binder Sem	(2)	31	02-04-1340	Ball Bearing	
5	28-17-0200	Clamp Strap		32	45-28-0080	Grease Slinger	
6	06-81-6150	8-32x1/2 Fil.Hd. Sem	(2)	33	28-28-0381	Diaphragm	
7	06-81-3700	8-32x7/8 Oval Hd. Screw	(2)	34	02-04-0910	Ball Bearing	
8	06-81-3750	8-32x1 Oval Hd. Screw		35	36-66-3301	Intermediate Shaft	
9	—	Handle (Switch Cover Side)		36	32-40-1481	Intermediate Gear	
10	06-97-1800	Lockwasher	(4)	37	40-50-3200	Clutch Spring	
11	23-66-0250	Switch		38	32-50-1261	Miter Gear (Sold with fig.45 as a set)	
12	06-81-7620	12-28x3/4 Fil.Hd. Sem	(4)	39	02-50-2130	Needle Bearing	
13	43-86-0050	Handle Insulator		40	44-20-0060	Spindle Lock Assembly	
14	06-81-8650	6-32x1/4 Rd.Hd. Sem	(2)	41	45-88-5320	Flat Washer	
15	44-66-0100	Cover Plate		42	28-14-0610	Gear Case	
16	22-64-0072	Cord Set		43	06-81-7300	10-24x1-3/4 Fil.Hd. Sem	(4)
17	23-44-0030	Brush Retaining Screw	(2)	44	43-62-0141	Side Handle	
18	22-22-0015	Brush Holder Ass'y. (with 23-86-0060 washer)	(2)	45	32-50-1241	Miter Gear (Refer to fig.38)	
19	22-18-0055	Carbon Brush Assembly	(2)	46	02-04-1710	Ball Bearing	
20	28-50-4564	Motor Housing		47	42-74-0065	Spindle Lock Cog	
21	34-60-1290	Retaining Ring		48	02-04-2060	Ball Bearing	
22	06-77-1400	14x5/16 Driv-In Screw		49	38-50-1751	Spindle	
23	06-81-9225	10-24x2-3/4 Round Sem	(2)	50	45-88-0220	Retaining Washer	
24	12-99-0034	Nameplate		51	45-88-0141	Thrust Washer	
25	06-85-0200	6x1/4 Rd. Hd. T type Z Screw	(2)	52	45-88-0160	Rubber Washer	
26	02-04-1070	Ball Bearing		53	06-81-6050	8-32x5/16 Fil.Hd. Sem	(6)
27	18-82-1185	115 Volt Field		54	49-40-0350	Disc Nut	
				55	23-82-0040	Cord Protector	
				56	06-42-1600	Woodruff Key	(2)
				57	06-83-2725	1/4-28x3/8 Hdls. Set Screw	(2)