



SERVICE PARTS LIST

BUL.54-22-0070

1 H.P. BENCH GRINDER

REVISED BUL
6415-1

DATE
May '68

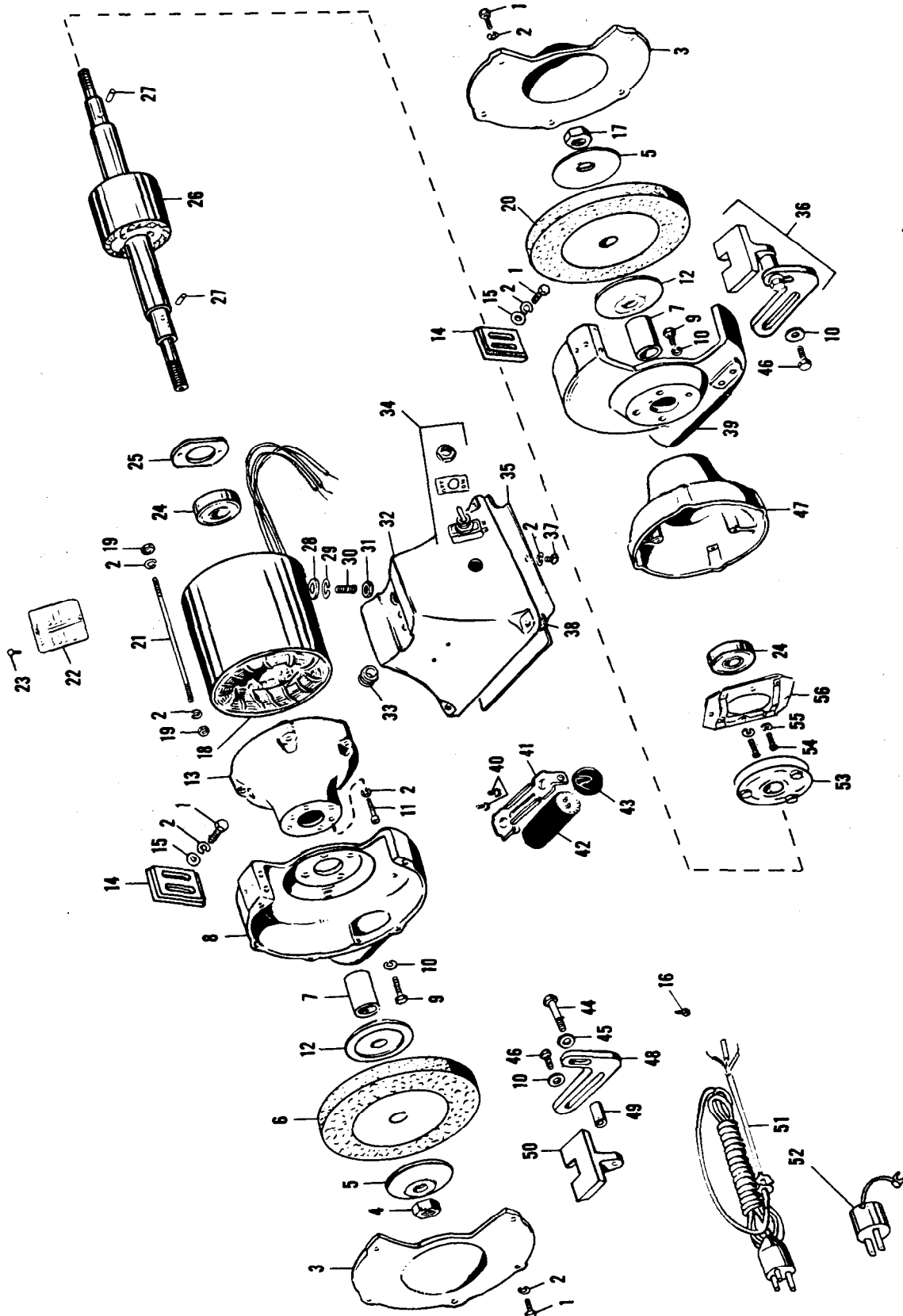
Catalog No. 5080

Starting
Serial No. 63923

WIRING INSTR.

Both Model and Serial No. must be furnished to obtain correct parts.

115/230 VOLT SINGLE PHASE





SERVICE PARTS LIST

BENCH GRINDER

When ordering replacement parts, please give complete motor identification number off name plate of tool.

ILLUSTRATED PARTS

FIG.	PART. NO.	DESCRIPTION OF PART	FIG.	PART. NO.	DESCRIPTION OF PART
1	06-75-0125	1/4-20x7/8 Hex Hd. Screw (14)	29	06-97-4200	1/2 Lockwasher Stud, (Not furnished separately)
2	06-97-4000	1/4 Lockwasher (20)	30		
3	42-92-0025	Wheel Guard Cover (2)	31	06-55-3150	1/2-20 Hex Nut
4	06-55-3725	3/4-16 L.H. Nut	32	42-20-0340	Base
5	43-34-0150	Wheel Flange (2)	33	22-56-0170	Connector
6	49-92-7200	Grinding Wheel, 24 Grit	34	23-66-0660	On-Off Switch
7	45-36-0570	Spacer (2)	35	42-92-0030	Base Cover
8	43-54-0200	Wheel Guard, L.H.	36	44-85-0160	Tool Rest Assy. (2)
9	06-75-0500	3/8-16x1 Hex. Hd. Screw (8)	37	06-81-4650	10-32x3/8 Rd. Hd. Screw (2)
10	06-97-4125	3/8 Lockwasher (12)	38	42-38-0020	Rubber Bumper (4)
11	06-81-1840	1/4-20x1-1/2 Fil. Hd. Screw (2)	39	43-54-0210	Wheel Guard, R.H.
12	43-34-0150	Wheel Flange (2)	40	06-81-2810	10-32x1/2 Flat Hd. Screw (2)
13	45-12-0230	Endshield, L.H.	41	22-40-0010	Capacitor Mounting Clip
14	43-54-0061	Spark Guard (2)	42	22-33-0050	Capacitor
15	45-88-5220	1/4 Washer (4)	43	22-32-0010	End Cap
16	06-81-4651	10-32x3/8 Brass Screw (2)	44	06-75-0492	3/8-24x2-3/4 Hex. Hd. Screw (2)
17	06-55-3700	3/4-16 Nut R.H.	45	45-88-5261	3/8 Washer (2)
18	23-58-0360	Wound Stator, Single Phase	46	06-75-0487	3/8-24x1-1/4 Hex. Hd. Screw (4)
19	06-55-1100	10-32 Hex. Nut (8)	47	45-12-0240	Endshield R.H.
20	49-92-7240	Grinding Wheel, 60 Grit	48	42-09-0050	Tool Rest Arm (2)
21	06-92-0350	10-32x11-1/8 Thru-Bolt (4)	49	45-36-0540	Spacer (2)
★ 22	12-98-0400	Blank Name Plate (Incl. item 23)	50	44-85-0100	Tool Rest (2)
23	44-60-0290	Name Plate Pin (2)	51	22-64-0610	Cord & Plug
24	02-04-5060	Ball Bearing (2)	52	48-03-0010	Adaptor Plug
25	44-66-0135	Bearing Retainer Lockplate	53	23-66-0720	Rotating Switch
26	23-40-0330	Rotor & Shaft Assy.	54	06-81-4566	8-32x3/8 Rd. Hd. Screw (2)
27	06-65-1528	1/8x3/8 Roll Pin (2)	55	06-97-3200	#8 Lockwasher (2)
28	45-88-5340	1/2 Washer	56	23-66-0710	Stationary Switch

PARTS NOT SHOWN

06-97-3400	#10 Lockwasher (This takes the place of Item 2 indicated for use with Item 21 Thru-Bolt)	(8)
★ 40-50-7655	Brg. Loading Spring	
★ 23-16 0410	Switch Insulator	