

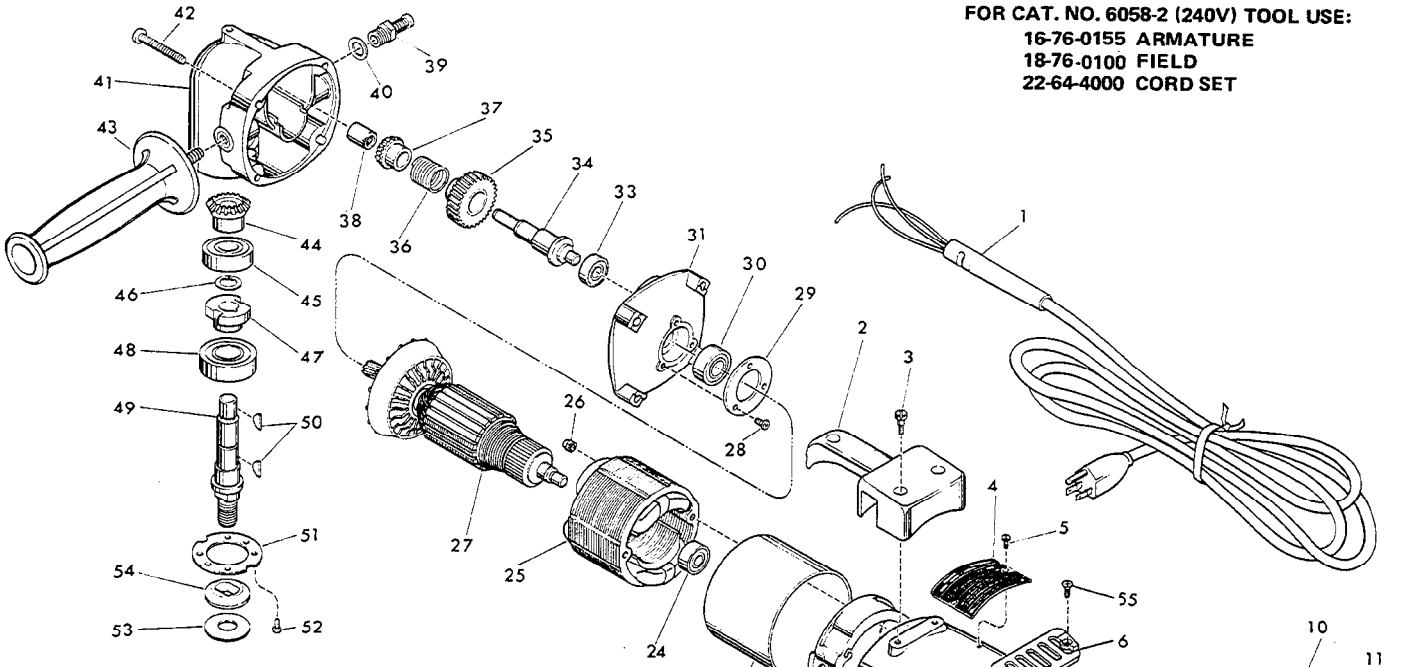


SERVICE PARTS LIST

BULLETIN NO.
54-38-1351

| | | | |
|--|---------------------------------|--------------------------------------|------------------|
| SPECIFY CATALOG NO. AND SERIAL NO. WHEN ORDERING PARTS | | REVISED BULLETIN 54-28-1350 | DATE Jan. '85 |
| 7" SANDER-GRINDER | | | |
| CATALOG NO. 6058 | | STARTING SERIAL NO. 610-19001 | |
| CAT. NO. 6058-6 | START SER. NO. 610-19001 | BILINGUAL LABEL 10-98-6090 | |

FOR CAT. NO. 6058-2 (240V) TOOL USE:
16-76-0155 ARMATURE
18-76-0100 FIELD
22-64-4000 CORD SET



| FIG. | PART NO. | DESCRIPTION OF PART | NO. REQ. |
|------|----------|---|----------|
| | 1 | 22-64-0076 Cord Set | (1) |
| | 2 | 31-70-0105 Tool Rest | (1) |
| | 3 | 45-04-0530 Shoulder Screw | (3) |
| | 4 | 12-99-0405 Nameplate Blank | (1) |
| | 5 | 06-85-0200 Nameplate Screw | (2) |
| | 6 | 31-15-0310 Cover Plate | (1) |
| ★ | 7 | 28-50-6351 Motor Housing Assy. (Includes 45-30-0120 B.B. Rtnng. Slug) | (1) |
| ★ | 8 | 06-95-5200 Ground Screw | (1) |
| | 9 | 06-95-0209 8-32x 3/8 Pan Hd. Taptite Screw | (2) |
| | 10 | 31-86-0160 Insulating Bushing | (2) |
| | 11 | 06-81-1170 10-32x3" Flat Fil. Hd. Screw | (2) |
| | 12 | 06-81-5650 10-24x7/8 Pan Hd. Taptite Screw | (4) |
| | 13 | 06-81-4207 10-24x7/8 Phil. Pan. Hd. Screw | (3) |
| | 14 | 31-44-0580 Right Handle Half | (1) |
| | 15 | 06-95-0215 8-18x1/2 Pan Hd. Thread Form Screw | (1) |
| | 16 | 23-66-0255 Switch (Use (4) 06-97-1800 Lockwashers) | (1) |
| ★ | 17 | 31-44-0605 Left Handle Half | (1) |
| | 18 | 06-55-1000 10-24 Hex Nut | (3) |
| ★ | 19 | 22-22-0400 Brush Holder Assy. (Includes 22-20-0360 Brush Tube) | (2) |
| | 20 | 22-18-0145 Carbon Brush Assembly | (2) |
| | 21 | 23-44-0140 Brush Retaining Screw | (2) |
| | 22 | 31-55-0110 Coil Shield | (1) |
| | 23 | 23-16-0950 Insulating Sleeve | (1) |
| | 24 | 02-04-0911 Ball Bearing | (1) |
| | 25 | 18-70-0100 120 Volt Field | (1) |
| | 26 | 06-57-3005 10-32 Locking Hex Nut | (2) |
| ★ | 27 | 16-70-0155 120 Volt Armature (W/34-60-1315 Rtnng. Ring) | (1) |
| | 28 | 06-95-0209 8-32x 3/8 Taptite Screw | (3) |
| | 29 | 44-86-0320 Ball Bearing Retainer | (1) |
| | 30 | 02-04-1516 Ball Bearing | (1) |
| | 31 | 28-28-0391 Diaphragm Assy. (Includes 45-30-0120 B.B. Rtnng. Slug) | (1) |
| | 33 | 02-04-0910 Ball Bearing | (1) |
| | 34 | 36-66-3310 Intermediate Shaft | (1) |
| ★ | 35 | 32-40-1930 Intermediate Gear | (1) |

| FIG. | PART NO. | DESCRIPTION OF PART | NO. REQ. |
|------|----------|---|----------|
| | 36 | 40-50-3200 Clutch Spring | (1) |
| | 37 | 32-50-1261 Miter Gear | (1) |
| | 38 | 02-50-2441 Needle Bearing | (1) |
| | 39 | 44-20-0235 Spindle Lock Assembly | (1) |
| | 40 | 45-88-5320 Flat Washer | (1) |
| | 41 | 28-14-0615 Gear Case Assembly | (1) |
| | 42 | 06-95-5655 1/4-20x1-3/4 Taptite Screw | (4) |
| | 43 | 43-62-0880 Side Handle Assembly | (1) |
| | 44 | 32-50-1241 Miter Gear | (1) |
| | 45 | 02-04-1746 Ball Bearing | (1) |
| | 46 | 34-60-1290 Retaining Ring | (1) |
| | 47 | 42-74-0070 Spindle Locking Cog | (1) |
| | 48 | 02-04-2031 Ball Bearing | (1) |
| | 49 | 38-50-5205 Spindle Shaft | (1) |
| | 50 | 06-42-1600 Woodruff Key | (2) |
| | 51 | 45-88-0220 Spindle Retaining Washer | (2) |
| | 52 | 06-95-3226 8-32x3/8 Fil. Hd. Taptite Screw | (3) |
| | 53 | 45-88-0160 Spindle Rubber Washer | (1) |
| | 54 | 49-05-0060 Rubber Washer Flange | (1) |
| | 55 | 06-95-3601 8-32x3/8" Oval Hd. Taptite Screw | (2) |
| | 56 | 49-12-0080 7" Guard Assy. - (Not Shown) | (1) |

Supplied with Canadian Tools

MILWAUKEE ELECTRIC TOOL CORPORATION
13135 W. LISBON RD., BROOKFIELD, WIS. 53005