



# SERVICE PARTS LIST

## LIGHTWEIGHT SANDER

**BUL. 54-38-2526**

REVISED BUL.  
54-38-2525

DATE  
Dec. '78

**Catalog No. 6036**

Starting  
Serial No. 569-7000

WIRING INSTRUCTIONS  
58-01-0506

Specify Catalog and Serial No. when ordering parts

5000 R.P.M.  
9.5 AMPS

FOR CAT. NO. 6036-2

(240V) TOOL USE:

18-56-0010 FIELD

16-56-0010 ARMATURE

22-64-4000 CORD SET

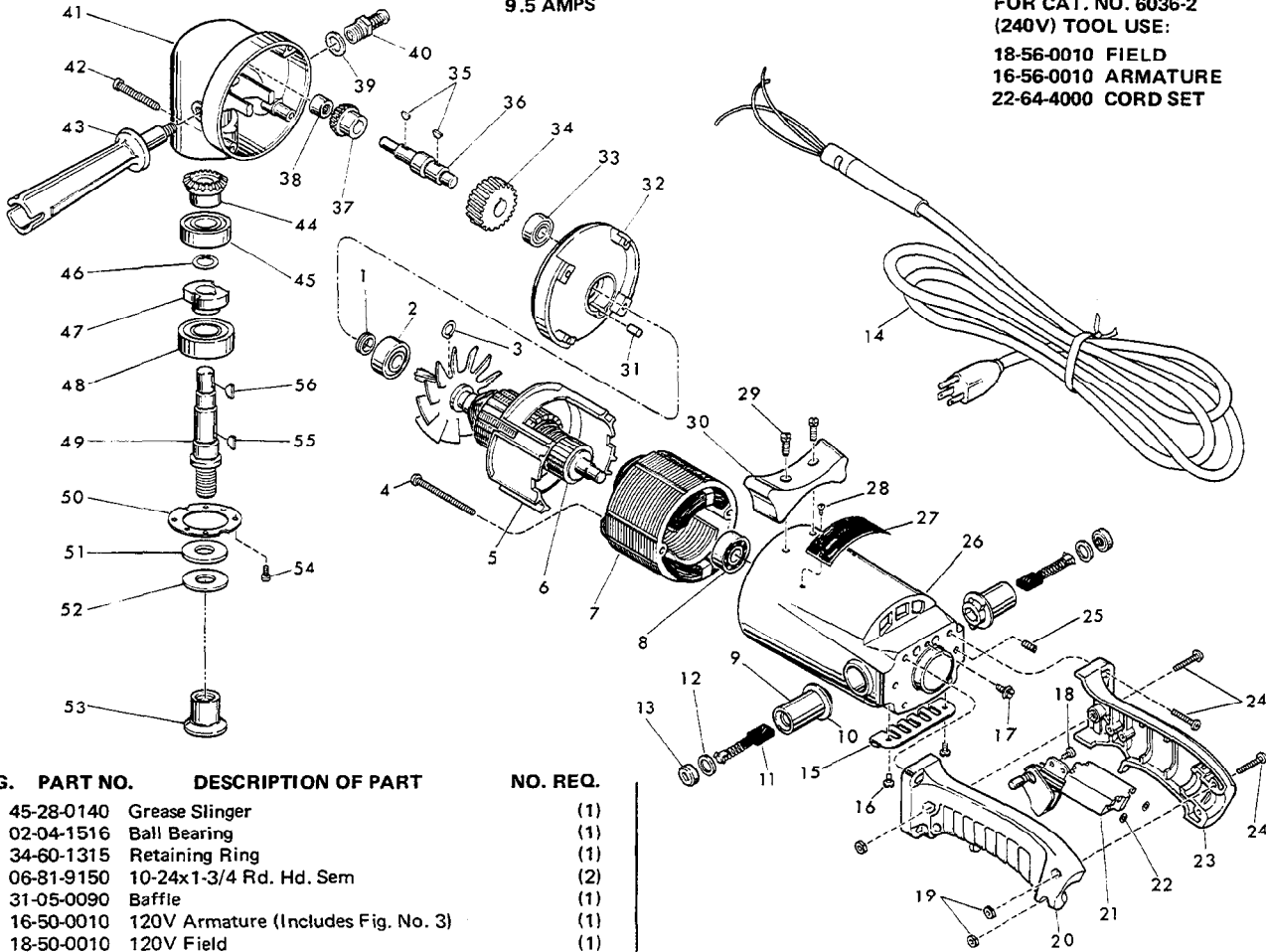


FIG. PART NO.	DESCRIPTION OF PART	NO. REQ.
1	45-28-0140 Grease Slinger	(1)
2	02-04-1516 Ball Bearing	(1)
3	34-60-1315 Retaining Ring	(1)
4	06-81-9150 10-24x1-3/4 Rd. Hd. Sem	(2)
5	31-05-0090 Baffle	(1)
6	16-50-0010 120V Armature (Includes Fig. No. 3)	(1)
7	18-50-0010 120V Field	(1)
8	02-04-1070 Ball Bearing	(1)
9	22-22-1231 Brush Holder	(2)
10	23-86-0075 Insulating Washer	(2)
11	22-18-0175 Carbon Brush Assembly	(2)
12	43-44-0180 Brush Cap Gasket	(2)
13	23-44-0100 Brush Retaining Screw	(2)
14	22-64-0080 Cord Set	(1)
15	44-66-0230 Commutator Cover Plate	(1)
16	06-81-8650 6-32x1/4 Rd. Hd. Sem	(2)
★17	06-81-8800 8-32x1/4" Rd. Hd. Sem	(1)
18	06-95-0215 8-18x1/2 Pan Hd. Thread Form Screw	(1)
19	06-55-1000 10-24 Hex Nut	(3)
20	31-44-0590 Left Handle Half	(1)
21	23-66-0255 Switch	(1)
22	06-97-1800 Lock Washer	(4)
23	31-44-0580 Right Handle Half	(1)
24	06-81-4207 10-24x7/8 Phil. Pan Hd. Screw	(7)
25	06-83-2000 10-24x1/4 Lg. Set Screw	(2)
★26	28-50-5106 Motor Housing	(1)
27	12-99-0032 Nameplate Blank	(1)
28	06-85-0200 Nameplate Screw	(2)
29	06-81-6950 10-24x1/2 Fil. Hd. Sem	(2)
30	28-79-0321 Tool Rest	(1)
31	45-30-0110 Ball Bearing Retaining Slug	(1)
32	28-28-1510 Diaphragm (Includes Fig. No. 31)	(1)
33	02-04-0910 Ball Bearing	(1)
34	32-40-1760 Intermediate Gear	(1)

FIG. PART NO.	DESCRIPTION OF PART	NO. REQ.
35	06-42-0800 Woodruff Key	(2)
36	36-66-4170 Intermediate Shaft	(1)
37	32-05-1140 Bevel Gear	(1)
38	02-50-1630 Needle Bearing	(1)
39	45-88-5320 Flat Washer	(1)
40	44-20-0060 Spindle Lock Assembly	(1)
41	28-14-1410 Gear Case	(1)
42	06-81-7300 10-24x1-3/4 Fil. Hd. Sem	(4)
43	43-62-0570 Side Handle	(1)
44	32-05-1150 Bevel Gear	(1)
45	02-04-1710 Ball Bearing	(1)
46	34-60-1290 Retaining Ring	(1)
47	42-74-0065 Spindle Locking Cog	(1)
48	02-04-2065 Ball Bearing	(1)
49	38-50-3751 Spindle	(1)
50	45-88-0220 Spindle Retaining Washer	(1)
51	45-88-0141 Hub Thrust Washer	(1)
52	45-88-0160 Rubber Spindle Washer	(1)
53	49-40-0350 Disc. Retaining Nut	(1)
54	06-81-6050 8-32x5/16 Fil. Hd. Sem	(6)
55	06-42-1600 Woodruff Key	(1)
56	06-42-1200 Woodruff Key	(1)
57	12-98-7068 Caution Plate (Not Shown)	(1)