



SERVICE PARTS LIST

BUL. 54-38-9501

3000 R.P.M. SANDER

REVISED BUL
54-38-9500

DATE
Jan. '70

Catalog No. 6020-9

Starting
Serial No. 99-49-923

WIRING INSTR.

58-01-0310

Both Model and Serial No. must be furnished to obtain correct parts.

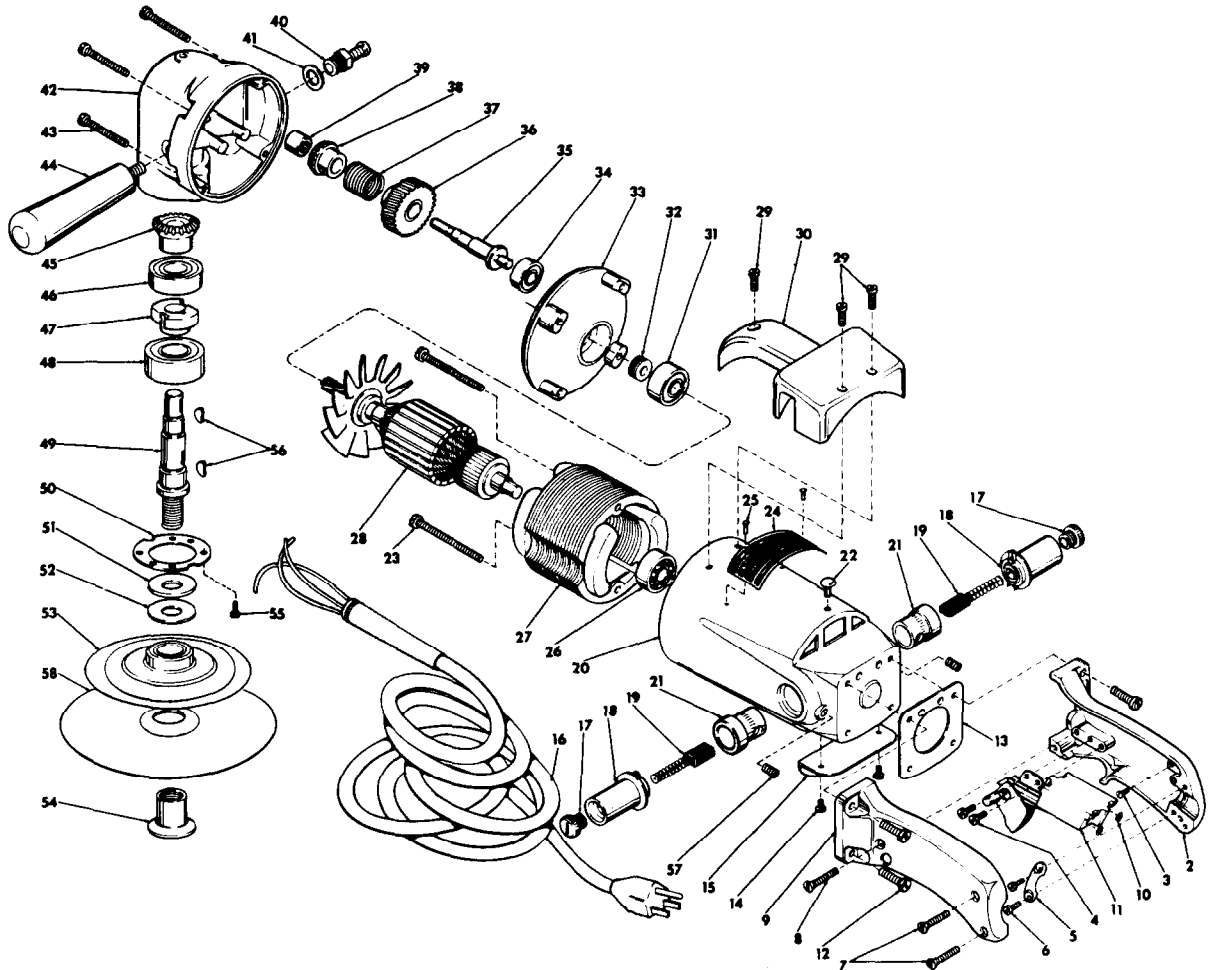


FIG.	PART NO.	DESCRIPTION OF PART	NO.REQ.	FIG.	PART NO.	DESCRIPTION OF PART	NO.REQ.
1	14-78-0100	Switch Handle Assembly (includes Fig. Nos. 2 thru 9)		29	06-81-6950	10-24x1/2 Fil.Hd. Sem	(3)
2	28-44-1041	Handle (Switch Mount Side)		★ 30	31-70-0100	Tool Rest	
3	06-81-8625	6-32x1/4 Rd.Hd. Bronze		31	02-04-1340	Ball Bearing	
4	06-81-5400	8-32x5/16 Binder Sem	(2)	32	45-28-0101	Grease Slinger	
5	28-17-0200	Clamp Strap		33	28-28-0381	Diaphragm	
6	06-81-6150	8-32x1/2 Fil.Hd. Sem	(2)	34	02-04-0910	Ball Bearing	
7	06-81-3700	8-32x7/8 Oval Hd. Screw	(2)	35	36-66-3301	Intermediate Shaft	
8	06-81-3750	8-32x1 Oval Hd. Screw		36	32-40-1541	Intermediate Gear	
9	28-44-9081	Handle (Switch Cover Side)		37	40-50-3200	Clutch Spring	
10	06-97-1800	Lockwasher	(4)	38	32-50-1261	Miter Gear (Sold with fig.45 as a set)	
11	23-66-0250	Switch		39	02-50-2130	Needle Bearing	
★ 12	06-81-7620	12-28x3/4 Fil.Hd. Sem	(4)	40	44-20-0060	Spindle Lock Assembly	
13	43-86-0050	Handle Insulator		41	45-88-5320	Flat Washer	
14	06-81-8650	6-32x1/4 Rd.Hd. Sem	(2)	42	28-14-0610	Gear Case	
15	44-66-0100	Cover Plate		43	06-81-7300	10-24x1-3/4 Fil.Hd. Sem	(4)
16	22-64-0090	Cord Set		44	43-62-0141	Side Handle	
17	23-44-0065	Brush Retaining Screw	(2)	45	32-50-1241	Miter Gear (Refer to fig.38)	
18	22-22-0130	Brush Holder Assy.	(2)	46	02-04-1710	Ball Bearing	
19	22-18-0260	Carbon Brush Assy.	(2)	47	42-74-0061	Spindle Lock Cog	
★ 20	28-50-4563	Motorhousing Assembly (includes Fig. Nos. 21 thru 23)		48	02-04-2060	Ball Bearing	
21	22-24-0100	Bushing	(2)	49	38-50-1751	Spindle	
22	06-77-1400	14x5/16 Driv-In Screw		50	45-88-0220	Retaining Washer	
23	06-81-9225	10-24x2-3/4 Round Sem	(2)	51	45-88-0141	Thrust Washer	
24	12-98-3500	Nameplate		52	45-88-0160	Rubber Washer	
★ 25	06-77-0625	6x1/4 Rd. Driv-In Screw	(2)	53	48-80-0750	5" Flat Disc Hub Assembly	
26	02-04-1070	Ball Bearing		54	44-40-0120	Disc Nut	
27	18-82-1180	115 Volt Field		55	06-81-6050	8-32x5/16 Fil.Hd. Sem	(6)
28	16-82-1730	115 Volt Armature		56	06-42-1600	Woodruff Key	(2)
				★ 57	06-83-2725	1/4-28x3/8 Hdls. Set Screw	(2)
				58	48-80-0900	7" Flat Backing Disc	