



SERVICE PARTS LIST

BUL. 54-38-2019

7" DISC SANDER

REVISED BUL. 54-38-2018 DATE Dec. '74

Catalog No. 6020

Starting Serial No. **49-51010**

WIRING INSTRUCTIONS **58-01-0310**

Specify Catalog and Serial No. when ordering parts

5000 R.P.M.

FOR 230V TOOL USE:
18-86-1180 FIELD
16-86-1580 ARMATURE
22-64-2090 CORD SET

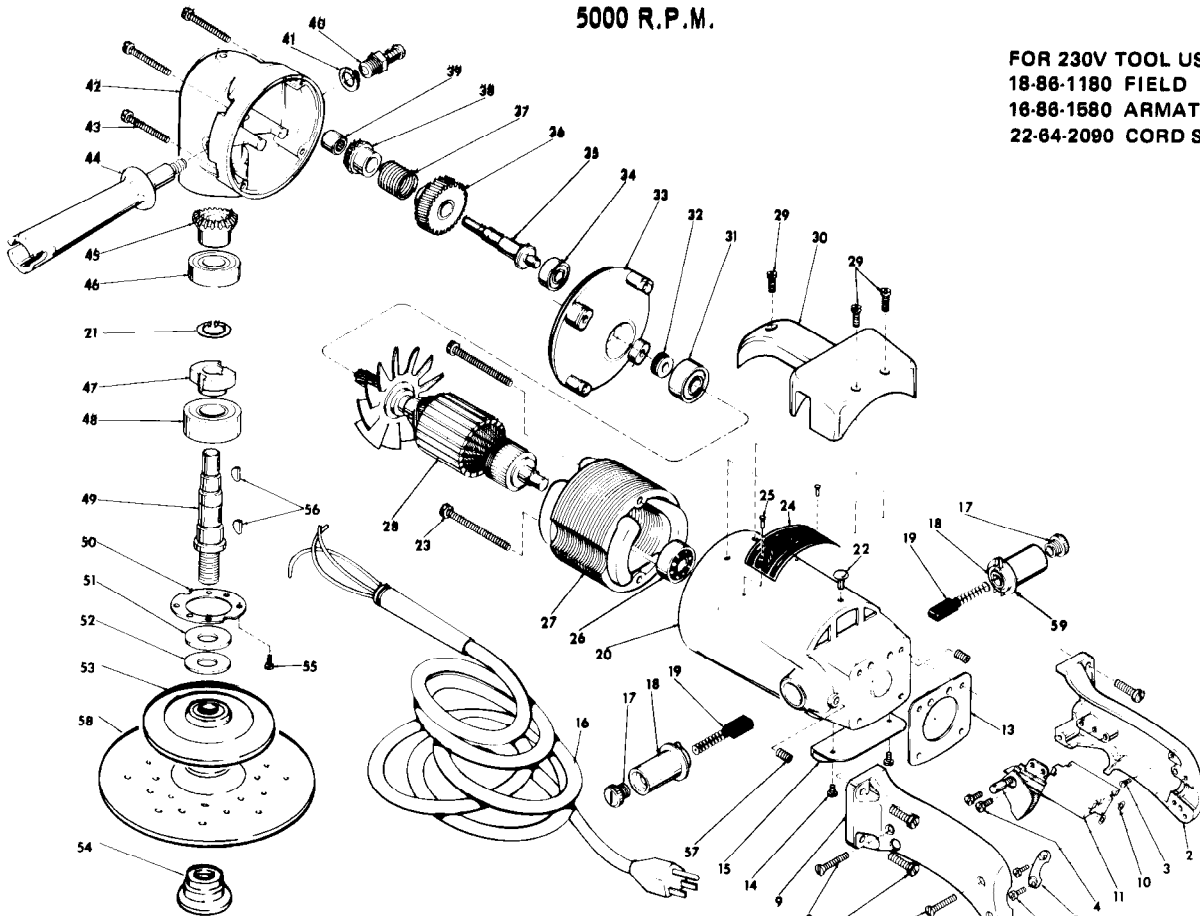


FIG.	PART NO.	DESCRIPTION OF PART	NO. REQ.
1	28-44-1042	Switch Handle Assembly (Includes Fig. Nos. 2, 7, 8 and 9)	(1)
2	—	Handle (Switch Mount Side)	(1)
3	06-81-8625	6-32x1/4 Ground Screw	(1)
4	06-81-5400	8-32x5/16 Binder Sem	(2)
5	28-17-0200	Clamp Strap	(1)
6	06-81-6150	8-32x1/2 Fil. Hd. Sem	(2)
7	06-81-3700	8-32x7/8 Oval Hd. Screw	(2)
8	06-81-3750	8-32x1 Oval Hd. Screw	(1)
9	—	Handle (Switch Cover Side)	(1)
10	06-97-1800	Lockwasher	(4)
11	23-66-0250	Switch	(1)
12	06-81-7620	12-28x3/4 Fil. Hd. Sem	(4)
13	43-86-0050	Handle Insulator	(1)
14	06-81-8650	6-32x1/4 Rd. Hd. Sem	(2)
15	44-66-0100	Cover Plate	(1)
16	22-64-0090	Cord Set	(1)
17	23-44-0035	Brush Retaining Screw	(2)
★ 18	22-22-0106	Brush Holder Assy.	(2)
19	22-18-0125	Carbon Brush Assembly	(2)
★ 20	28-50-4564	Motor Housing	(1)
21	34-60-1290	Retaining Ring	(1)
22	06-77-1400	14x5/16 Driv-In Screw	(1)
23	06-81-9225	10-24x2-3/4 Round Sem	(2)
24	12-99-0034	Nameplate	(1)
★ 25	06-85-0200	6x1/4 Rd. Hd. Type Z Screw	(2)
26	02-04-1070	Ball Bearing	(1)
27	18-82-1180	115 Volt Field	(1)
28	16-82-1711	115 Volt Armature	(1)
29	06-81-6950	10-24x1/2 Fil. Hd. Sem	(3)
30	31-70-0100	Tool Rest	(1)

FIG.	PART NO.	DESCRIPTION OF PART	NO. REQ.
31	02-04-1340	Ball Bearing	(1)
32	45-28-0080	Grease Slinger	(1)
33	28-28-0381	Diaphragm	(1)
34	02-04-0910	Ball Bearing	(1)
35	36-66-3301	Intermediate Shaft	(1)
36	32-40-1481	Intermediate Gear	(1)
37	40-50-3200	Clutch Spring	(1)
38	32-50-1261	Miter Gear (Sold w/fig. 45 as a set)	(1)
39	02-50-2130	Needle Bearing	(1)
40	44-20-0060	Spindle Lock Assembly	(1)
41	45-88-5320	Flat Washer	(1)
42	28-14-0610	Gear Case	(1)
43	06-81-7300	10-24x1-3/4 Fil. Hd. Sem	(4)
★ 44	43-62-0570	Side Handle	(1)
45	32-50-1241	Miter Gear (Refer to fig. 38)	(1)
46	02-04-1710	Ball Bearing	(1)
★ 47	42-74-0065	Spindle Lock Cog	(1)
48	02-04-2060	Ball Bearing	(1)
49	38-50-1751	Spindle	(1)
50	45-88-0220	Retaining Washer	(1)
51	45-88-0141	Thrust Washer	(1)
52	45-88-0160	Rubber Washer	(1)
★ 53	49-36-3500	Rubber Pad	(1)
★ 54	49-40-0350	Disc Nut	(1)
55	06-81-6050	8-32x5/16 Fil. Hd. Sem	(6)
56	06-42-1600	Woodruff Key	(2)
57	06-83-2725	1/4-28x3/8 Hdls. Set Screw	(2)
★ 58	48-80-6000	7 inch Phenolic Plate	(1)
59	23-86-0060	Washer	(2)
★ 60	12-98-7081	Caution Plate (Not Shown)	(1)