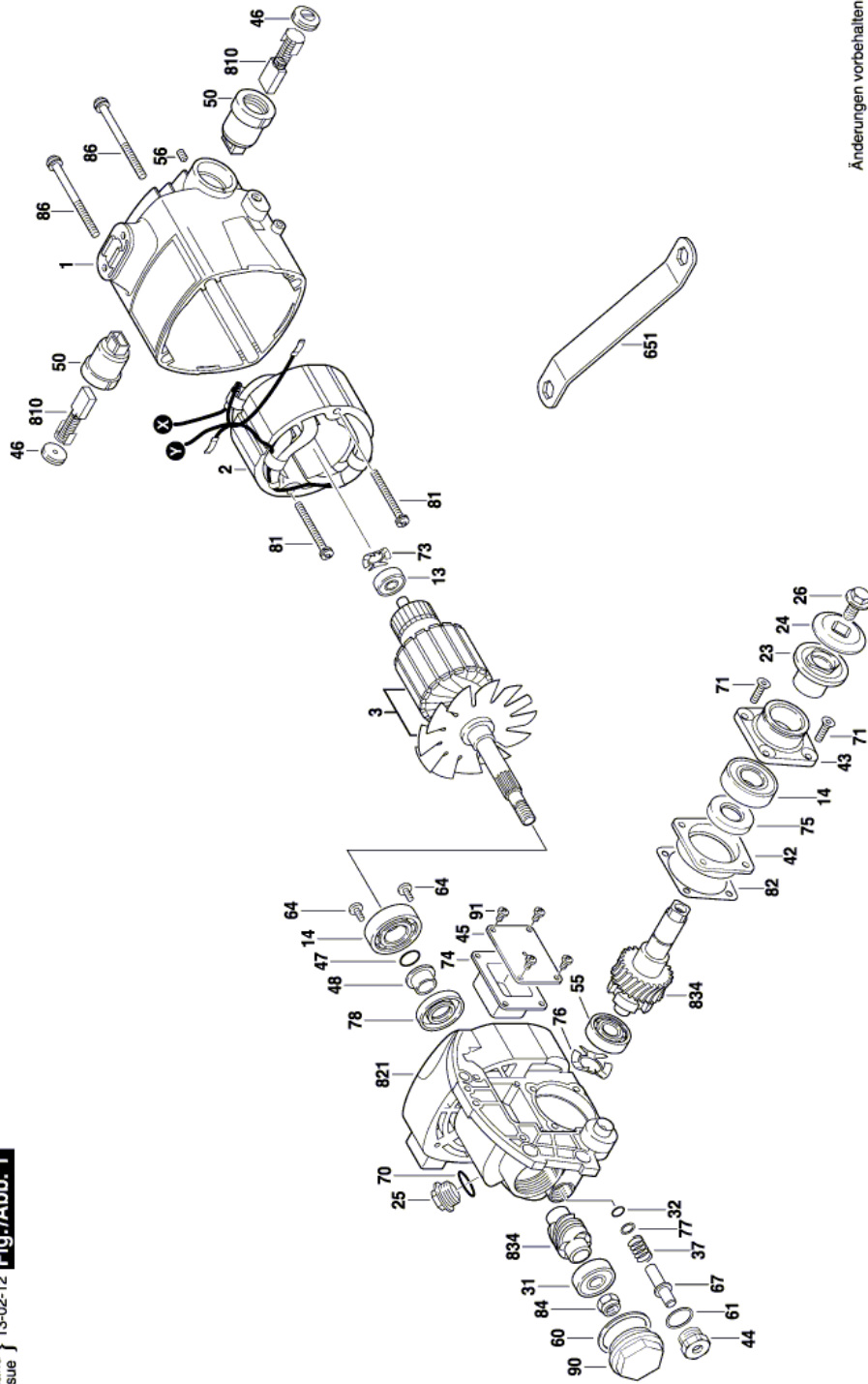


Item	Part Number	Description	Illustration	Price	Quantity
1	1 619 X01 159	Motor Housing		-,-	1
2	1 619 X03 960	Field 120V		-,-	1
3	2 610 931 895	Armature 120V		-,-	1
13	2 610 017 348	Deep-Groove Ball Bearing		-,-	1
14	2 610 024 748	Ball Bearing		-,-	2
23	2 610 932 562	Washer		-,-	1
24	2 610 932 561	Washer		-,-	1
25	1 619 X06 474	Oil Drain Plug		-,-	1
26	2 610 932 181	Collar bolt		-,-	1
31	2 610 017 875	Ball Bearing		-,-	1
32	1 619 X03 779	O-Ring		-,-	1
37	2 610 023 394	Spring		-,-	1
42	1 619 X01 253	Bearing Plate		-,-	1
43	1 619 X01 255	Guard Plate		-,-	1
44	1 619 X01 271	Bushing		-,-	1
45	1 619 X01 228	Cover		-,-	1
46	1 619 X01 268	Device cap		-,-	2
47	2 610 044 638	O-Ring		-,-	1
48	1 619 X01 272	Collar		-,-	1
50	1 619 X04 708	Brush Holder		-,-	2
55	2 610 000 166	Ball Bearing		-,-	1
56	2 610 027 039	Set screw		-,-	2
60	2 610 023 331	Washer		-,-	1
61	2 610 025 067	Washer		-,-	1
64	1 619 X01 786	Contact Screw		-,-	3
67	1 619 X01 298	Bearing bolt		-,-	1
70	1 616 B10 364	O-Ring		-,-	1
71	2 610 027 002	Screw		-,-	4
73	2 610 004 459	Spring Washer		-,-	1
74	1 619 X01 257	Rubber Gasket		-,-	1
75	2 610 025 245	Seal		-,-	1
76	2 610 931 237	Spring Washer		-,-	1
77	2 610 017 016	Washer		-,-	1

Item	Part Number	Description	Illustration	Price	Quantity
78	2 610 329 927	Seal		1	-,- 1
81	2 610 329 952	Screw		1	-,- 2
82	1 619 X01 258	Gasket		1	-,- 1
84	2 610 318 324	Nut		1	-,- 1
86	2 610 329 954	Screw		1	-,- 4
90	1 619 X01 260	Bearing Cover		1	-,- 1
91	1 619 X06 749	Screw		1	-,- 4
651	1 619 X01 144	Socket wrench		1	-,- 1
810	1 619 X01 351	Carbon-Brush Set		1	-,- 1
821	2 610 352 057	Gear Housing		1	-,- 1
834	1 619 X02 374	Set Of Gears		1	-,- 1

F 012 X86 09C

Stand } 13-02-12
Issue } **Fig./Abb. 1**



Änderungen vorbehalten
Modifications reserved
Modificacions reserveses
Salvo modificaciones