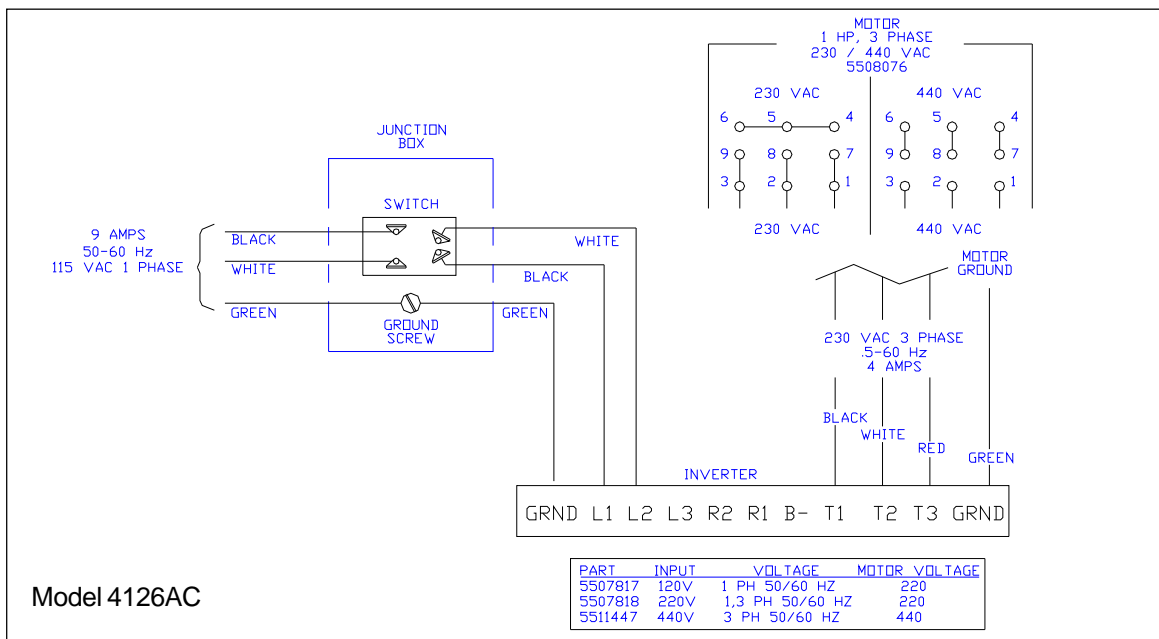
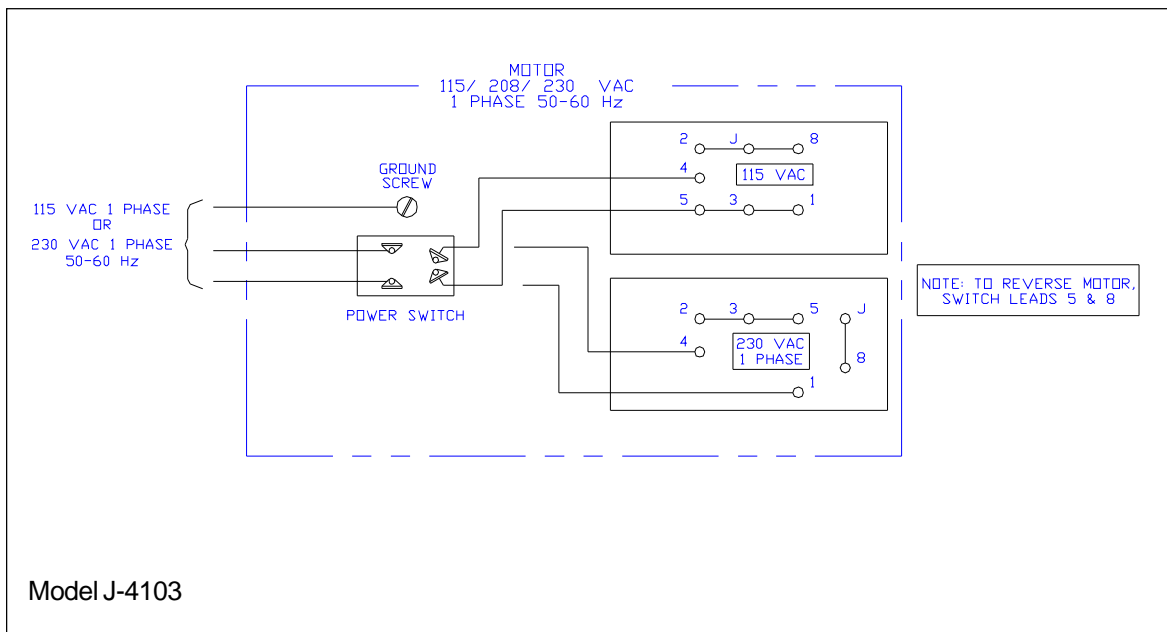
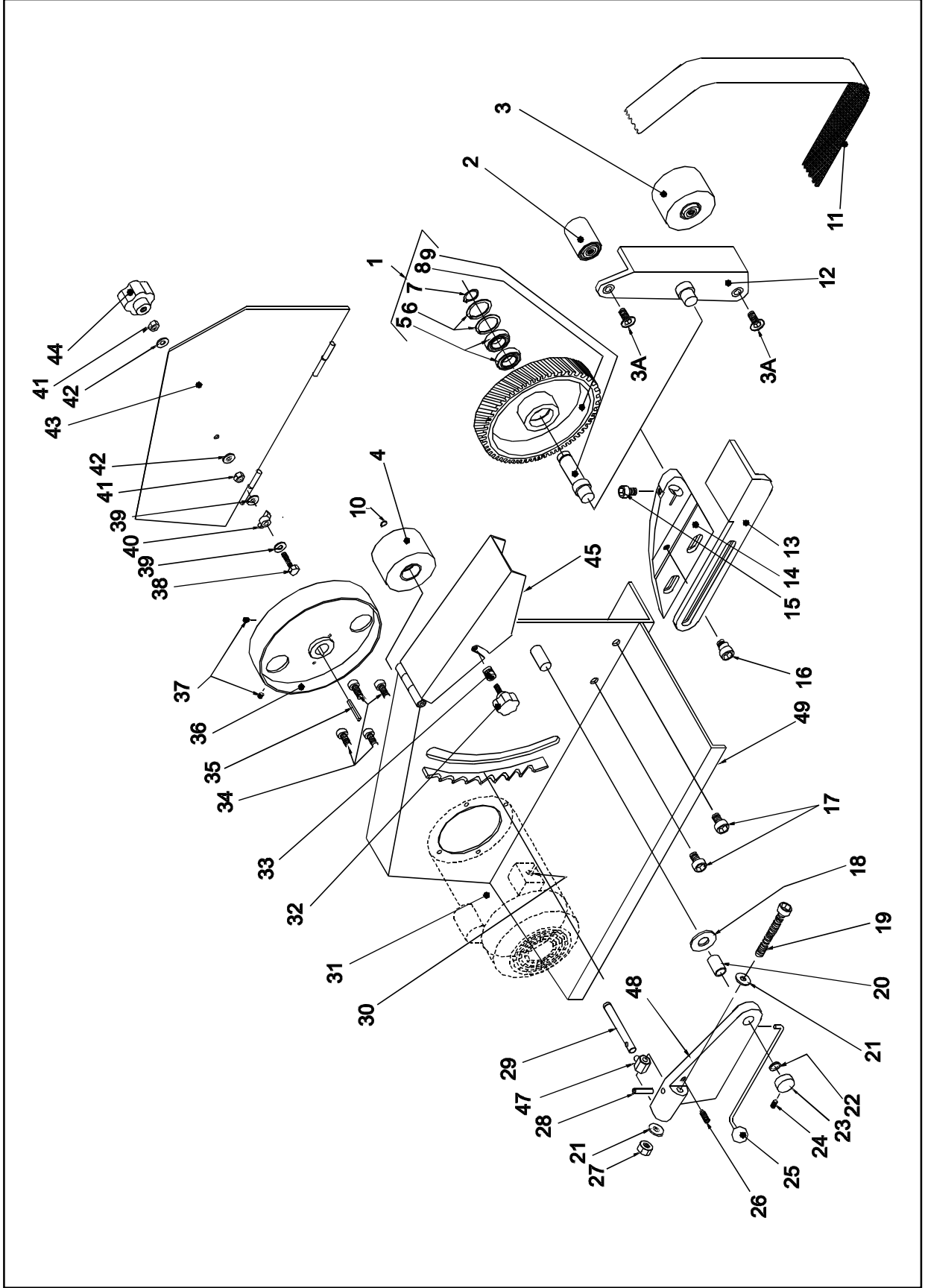


Wiring Diagrams



Exploded View - Square Wheel Belt Grinder

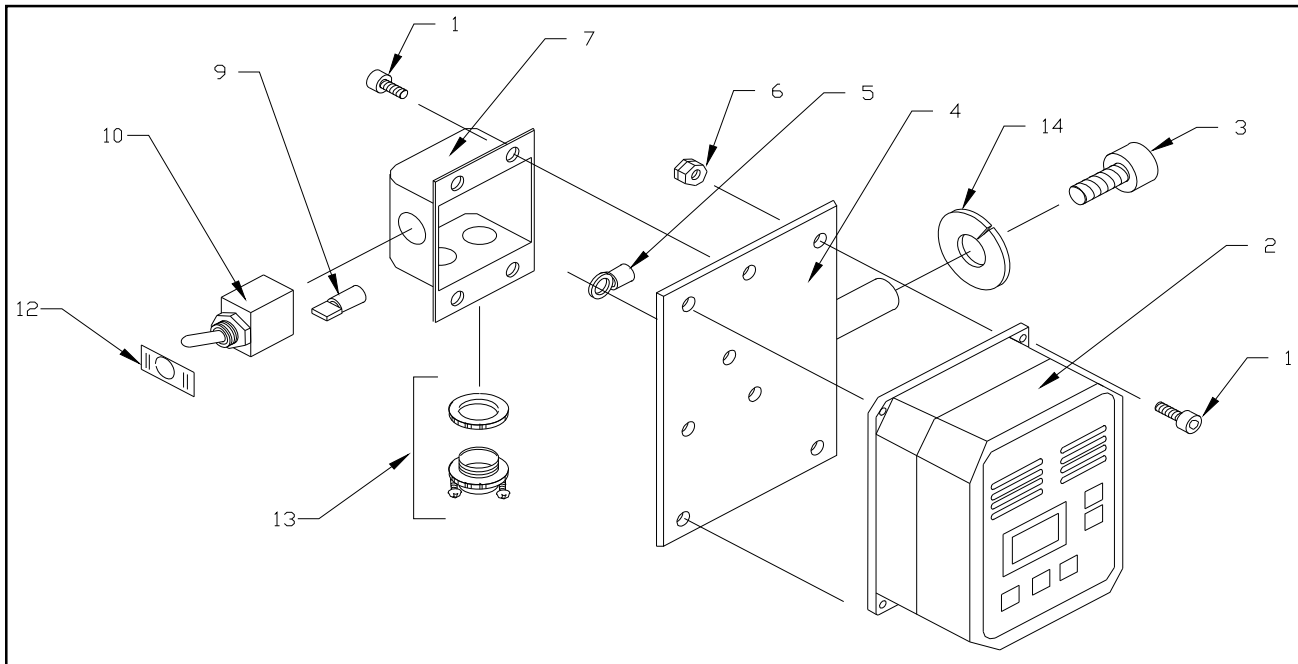


Parts List - Square Wheel Belt Grinder

Ref. No.	Part Number	Description	Qty.
1	5510944	Contact Wheel Assy, 10 x 2 Serrat, 90 Duro	1
	5510943	Contact Wheel Assy, 8 x 2 Smooth, 50 Duro	1
	5510942	Contact Wheel Assy, 8 x 2 Serrated, 50 Duro	1
2	5044590	Contact Wheel Assy, 1-1/2 x 2	1
3	5044610	Contact Wheel Assy, 3 x 2	1
3A	9049821	Screw, Flat Head Cap	2
4	5507582	Idler Wheel	1
5	9100331	Bearing	2
6	9074011	Retaining Ring, Internal	2
7	9074081	Retaining Ring, External	2
8	5510946	Contact Wheel, 8 x 2 Serrated, 50 Duro	1
	5510947	Contact Wheel, 8 x 2 Smooth, 50 Duro	1
	5510948	Contact Wheel, 10 x 2 Serrated, 90 Duro	1
9	5053231	Shaft, 8 x 10 Wheel	1
10	9074381	Retaining Ring, External	1
11	9112811	Abrasive Belt, 2 x 72, 50 Grit (Standard - optional grit below) (10 piece minimum order)	1
12	J-5044400	Platen Casting	1
13	J-5044410	Work Rest Casting	1
14	J-5044370	Head Casting	1
15	9128441	Screw, Socket Head Cap 3/8-16 x 1	1
16	5049990	Screw, Work Rest Machine	1
17	9129881	Screw, Socket Head Cap 3/8-16 x 5/8	2
18	9055361	Flat Washer, Nylon 1/2 I.D. x 1 O.D.	1
19	9129861	Scr, Socket Head Cap, Fill Thrd, 3/8-24 x 3	1
20	5046571	Bearing, Idler Housing	1
21	9055381	Flat Washer, Nylon, 3/8	2
22	9010271	O-Ring, 1/2	1
23	5044651	Cap, Idler Housing Pin	1
24	9133041	Set Screw, Socket Head 1/4-20 x 1/4	1
25	5046560	Lever, Tension	1
26	9133191	Set Screw, Nylon Tipped 5/16-18 x 3/4	1
27	9129561	Locknut, Hex, 3/8-24	1
28	9059811	Roll Pin, 3/16 x 1-1/2	1
29	5053301	Shaft, Idler Pulley	1

Ref. No.	Part Number	Description	Qty.
30	5541241	Switch (Model 4103 only)	1
31	9066821	Motor & Switch, 1 HP, 1-Phase (J-4103)	1
	5508076	Motor, 1 HP, 3-Phase (J-4126AC only)	1
32	9070361	Knob, Hand	1
33	9070781	Nut, Allen, 5/16-18	1
34	9128671	Bolt, Hex Head, w/Nylock 3/8-16 x 3/4	4
35	9114320	Key, 3/16 x 3/16 x 1-1/4	1
36	5044511	Pulley, Drive	1
37	9054541	Set Screw, Socket Head 5/16-18 x 1/2	2
38	5630451	Screw, Socket Head Hex 5/16-18 x 1-1/2	1
39	5077041	Lock Washer, 5/16	2
40	9070381	Latch, Cam	1
41	5630061	Nut, Hex, 5/16-18	1
42	5507583	Washer, Nylon 5/16	2
43	5055311	Door	1
44	9070371	Knob, Hand	1
45	J-5044630	Guard Flap Assembly	1
46	9057461	Washer, Flat 0.26 x 0.63 x 0.06	1
47	5046600	Tracking Leader Assembly	1
48	J-5046540	Casting, Idler Housing	1
49	J-5541030	Main Frame Assembly	1

Parts List - Inverter



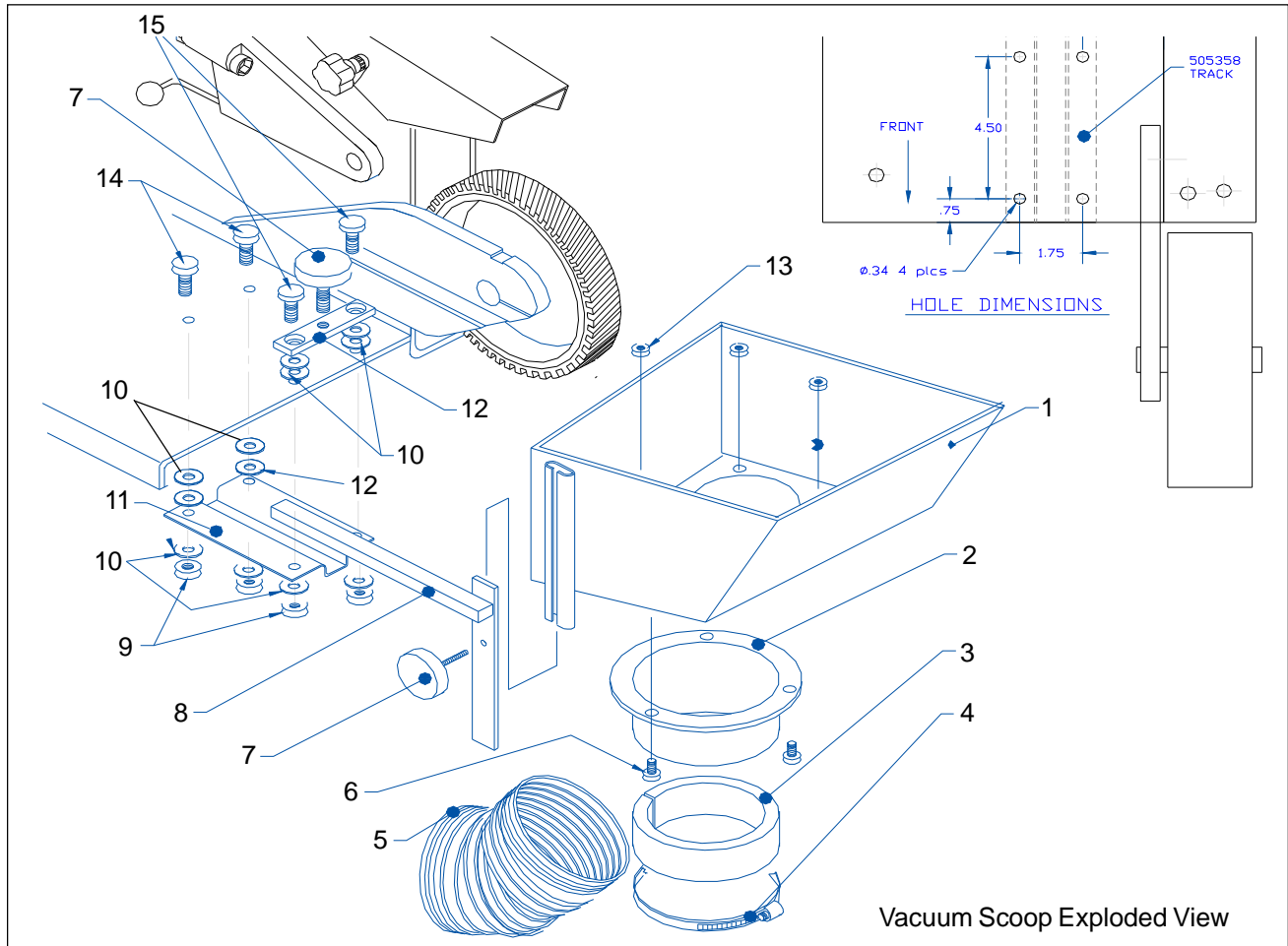
Ref. No.	Part Number	Description	Qty.
1	5550874	Screw, Socket head Cap, 10-32NF x 3/8	7
2	5507817	inverter (1ph, 120V, 50/60Hz)	1
	5507818	Inverter (3ph, 220V, 50/60Hz)	
	5511447	Inverter (3ph, 440V, 50/60Hz)	
3	9128571	Screw, Hex Head 1/2-13 x 1	1
4	5515215	Mount, Inverter	1
5	9119481	Terminal, Full Closed	1

Ref. No.	Part Number	Description	Qty.
6	5508073	Nut, Lock, 10-32 Nylock	4
7	5507934	Box, Switch	1
9	9119721	Spade, Female 16-14AWG	4
10	9117401	Switch, Toggle	1
12	9085061	Dial, ON-OFF	1
13	9119071	Grip, Cord	2
14	5628371	Lock Washer, 1/2	1

Accessories

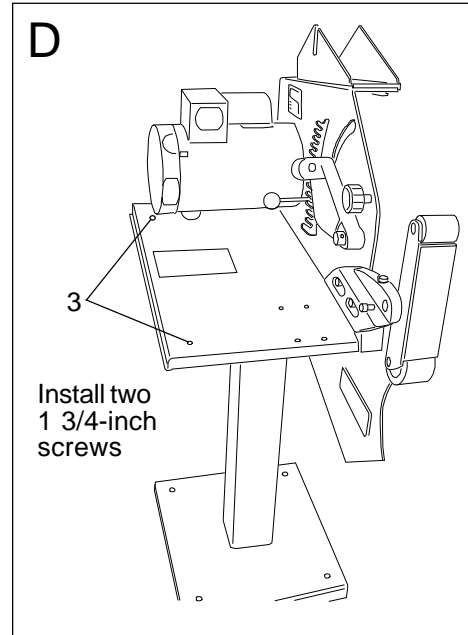
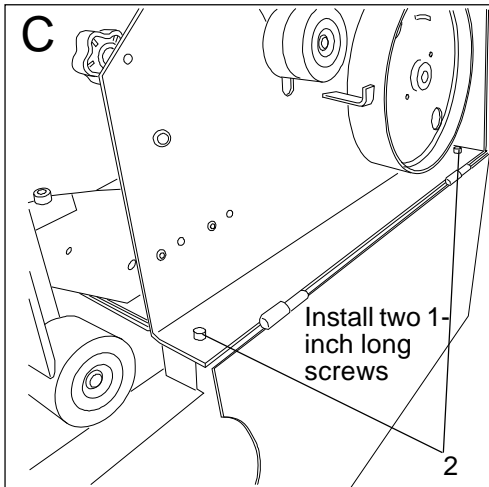
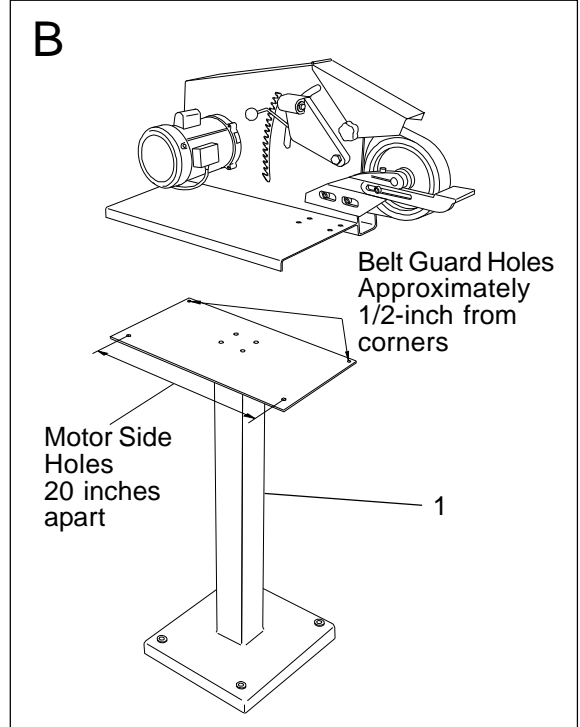
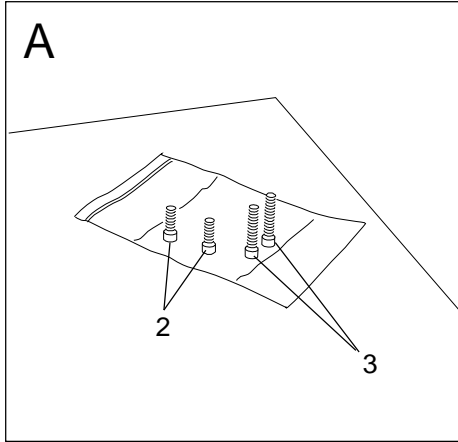
Exploded View - Vacuum Scoop

A vacuum scoop connects the machine to the vacuum system. The mounting provisions for the scoop are shown in the exploded view below.



Ref. No.	Part Number	Description	Qty.
1	5053531	Scoop Assembly	1
2	5052471	Adapter, Hose	1
3	5053601	Reducer, 4 x 3 in. (Woodworkers)	1
	5053611	Reducer, 4 x 3 in. (Metal Workers)	1
4	5507534	Clamp, Hose 3 in.	1
5	5507533	Hose, 3 x 5 in.	1
6	9128241	Screw, HH Cap	3
7	9070361	Knob	2

Ref. No.	Part Number	Description	Qty.
8	5053571	Rail	1
9	9032961	Lock Nut, Nylon Insert	4
10	9055411	Washer, Nylon	8
11	5053581	Channel	1
12	9057391	Washer, Flat	2
13	9056411	Nut, Hex Jam	3
14	9062111	Screw, SHCS (5/16-18 X 3/4)	2
15	9146801	Screw, SHCS Low Head (5/16-18 X 1 1/2)	2



Ref. No.	Part Number	Description	Qty.
1	5248081	Pedestal	1
2	9062121	Socket Head Cap Screw (5/16-18 x 1)	2
3	5511051	Socket Head Cap Screw (5/16-18 x 1 3/4)	2

Figure 16: Assembly of Grinding Machine and Pedestal