



SERVICE PARTS LIST

1 H.P. ROUTER

Catalog No. 5620

Starting Serial No. **451-9000**

Specify Catalog and Serial No. when ordering parts

BUL. 54-37-0102

REVISED BUL.
54-37-0101

DATE
Sept.'77

WIRING INSTRUCTIONS
58-01-0700

Catalog No. 5620 includes:

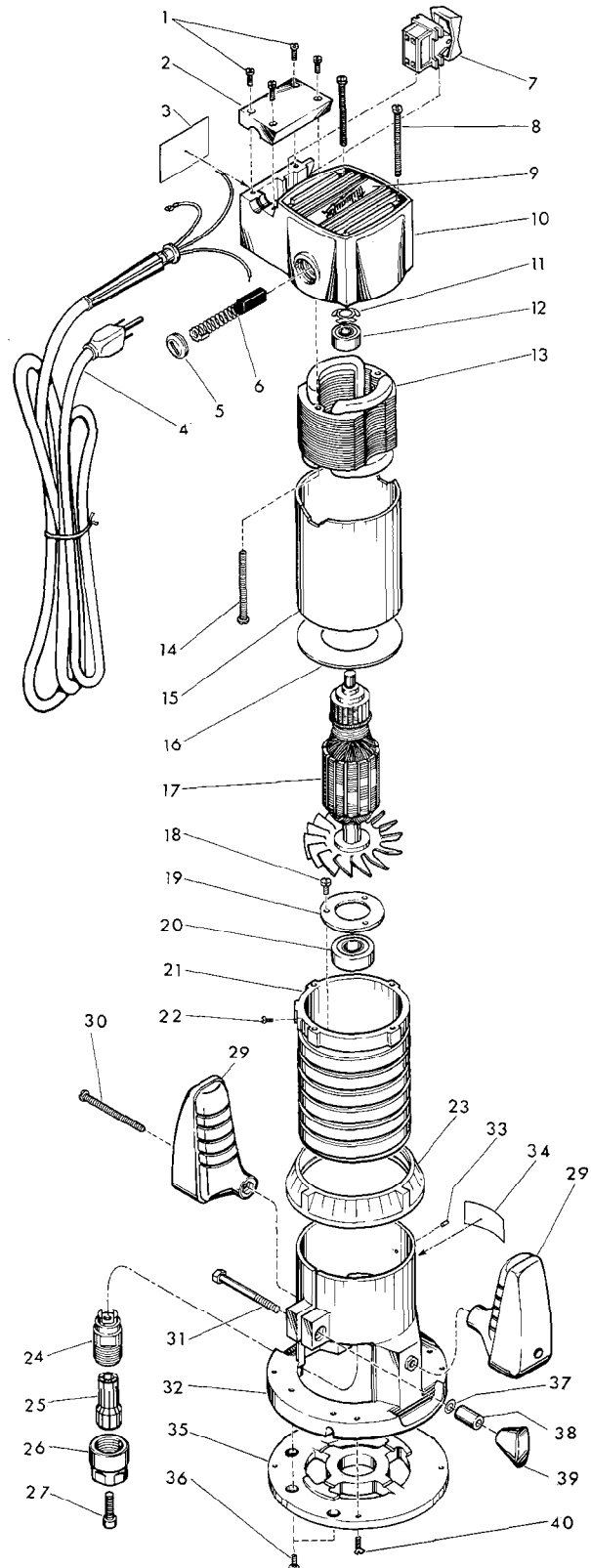
5610 Router Motor Assy. (figs. 1 thru 27) and
48-10-0070 Router Base Assy. (figs. 29 thru 40)

FIG.	PART NO.	DESCRIPTION OF PART	NO. REQ.
★ 1	06-95-0135	6-32x11/16 Comb. Hd. Mach. Screw	(4)
2	31-17-0050	Cord Clamp	(1)
3	12-98-0100	Nameplate	(1)
4	22-64-0386	Cord Set	(1)
5	23-44-0130	Brush Cap	(2)
6	22-18-0440	Carbon Brush Assembly	(2)
7	23-66-0860	Switch	(1)
★ 8	06-95-0265	8-32x1-7/8 Comb. Hd. Mach. Screw	(4)
9	12-98-6965	Identification Plate	(1)
★ 10	31-12-0120	Upper Bearing Cap Assembly	(1)
11	06-97-5700	Finger Washer	(1)
12	02-04-0895	Ball Bearing	(1)
13	18-62-1100	120V. Field	(1)
★ 14	06-95-0380	10-24x2-1/8 Comb. Hd. Mach. Screw	(2)
15	23-16-0675	Insulating Sleeve	(1)
16	23-50-0070	Insulating Spacer1	(1)
17	16-62-1180	120V. Armature	(1)
★ 18	06-95-0210	8-32x3/8 Comb. Hd. Mach. Screw	(3)
19	44-66-5300	Bearing Retainer	(1)
20	02-04-1655	Ball Bearing	(1)
★ 21	26-50-6170	Motor Housing	(1)
22	06-81-8625	6-32x1/4 Ground Screw	(1)
23	31-58-0010	Adjusting Ring	(1)
24	45-10-0040	Chuck Shank	(1)
25	48-66-0930	1/4" Collet	(1)
26	44-40-0340	Collet Nut	(1)
27	06-75-3005	1/4-20x5/8 Socket Hd. Screw	(1)
★ 28	48-10-0070	Router Base (Includes Fig. Nos. 29 thru 40)	(1)
★ 29	31-44-0275	Handle	(2)
★ 30	06-95-0390	10-24x2-3/8 Comb. Hd. Mach. Screw	(2)
31	06-75-0230	1/4-20x1-3/4 Hex. Hd. Screw	(1)
★ 32	28-06-0825	Base Assembly (Includes Fig. Nos. 33 and 34)	(1)
33	06-65-0575	3/32x5/16 Long Pin	(1)
★ 34	12-98-7077	Router Base Nameplate	(1)
35	31-06-0070	Sub Base	(1)
★ 36	06-95-0310	10-32x3/8 Comb. Hd. Mach. Screw	(2)
37	06-97-5600	Lock Washer	(1)
38	45-36-0680	Locking Knob Spacer	(1)
39	43-98-0070	Locking Knob	(1)
★ 40	06-95-3241	8-32x1/2 Comb. Hd. Mach. Screw	(4)

49-96-4070 7/8 Open End Wrench
12-98-7081 Caution Plate

**FOR CAT. NO. 5620-2
(240V) TOOL USE:**

**18-66-1100 FIELD
16-66-1180 ARMATURE
22-64-4100 CORD SET**



Handle (Fig. No. 29) has been revised. Some tools covered by this parts list were made using the new handles.
If the handle is attached to the router base with a screw inserted from the outside of the tool, refer to the following sketch for assembly and correct selection of parts.

