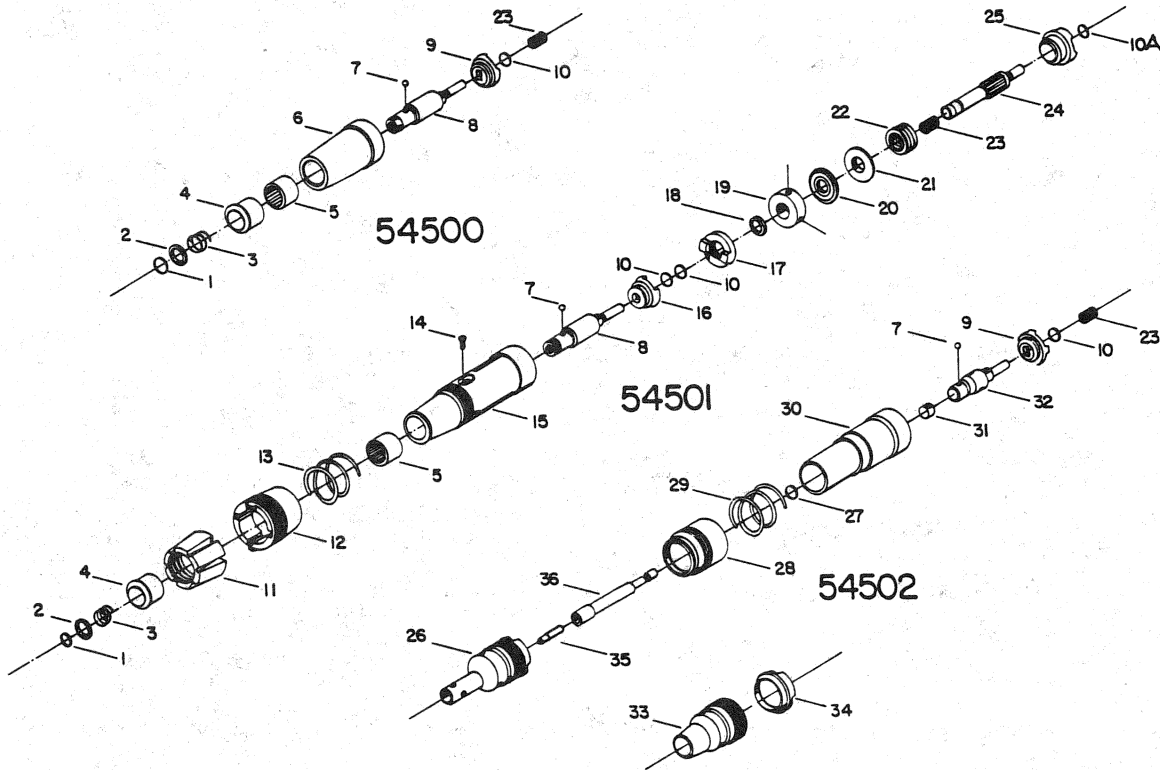


**PORTER-CABLE
SCREWDRIVER
CLUTCH KITS**

**54500
54501
54502**



| Ref. No. | Part No. | Description | Ref. No. | Part No. | Description |
|----------|----------|-----------------------------------|----------|-------------|-----------------------|
| 1 | 863028 | Retaining Ring | 25 | 863252 | Dog |
| 2 | 861791 | Retaining Washer | 26 | 54421 | Nose |
| 3 | 861790 | Spring | 27 | 854080 | "O" Ring |
| 4 | 861785 | Sleeve | 28 | 853481 | Collar |
| 5 | 865274** | Bearing | 29 | 853730 | Spring |
| 6 | 864308 | Housing Assembly, Incl: Ref. 5 | 30 | 853705 | Housing |
| 7 | 844318 | Ball | 31 | 854346 | Ball Retaining Spring |
| 8 | 861794 | Spindle | 32 | 853446 | Shaft |
| 9 | 697056 | Clutch Dog Set (54500, 54502) | 33 | 58441 | Nose |
| 10 | 853644 | Retaining Ring | 34 | 54426 | Nut |
| 10A n | 863253 | Retaining Ring | 35 | See Catalog | |
| 11 | 861921 | Adjusting Collar | 36 | 54422 | Bit Holder |
| 12 | 861917 | Lock Collar | | | |
| 13 | 861918 | Spring | | | |
| 14 | 861800 | Clutch Screw | | | |
| 15 | 861631 | Housing Assembly, Incl: Ref. 5 | | | |
| 16 | 861919 | Dog | | | |
| 17 | 861915 | Dog | | | |
| 18 | 802552 | Retaining Ring | | | |
| 19 | 861946 | Torque Collar | | | |
| 20 | 861920 | Thrust Bearing | | | |
| 21 | 861916 | Thrust Washer | | | |
| 22 | 844320 | Compression Spring | | | |
| 23 | 853731 | Spring | | | |
| 24 | 863251 | Spindle | | | |

**Service Specs

Ref. 5 Press Bearing to Depth of 1/2" into Ref. 15 and 3/8" into Ref. 6.