



# SERVICE PARTS LIST

## HAMMER DRILL

Catalog No. **5390**

Starting Serial No. **422-1001**

Specify Catalog and Serial No. when ordering parts

**BUL. 54-24-1500**

REVISED BUL. DATE  
Aug. '73

WIRING INSTRUCTIONS  
**58-01-0050**

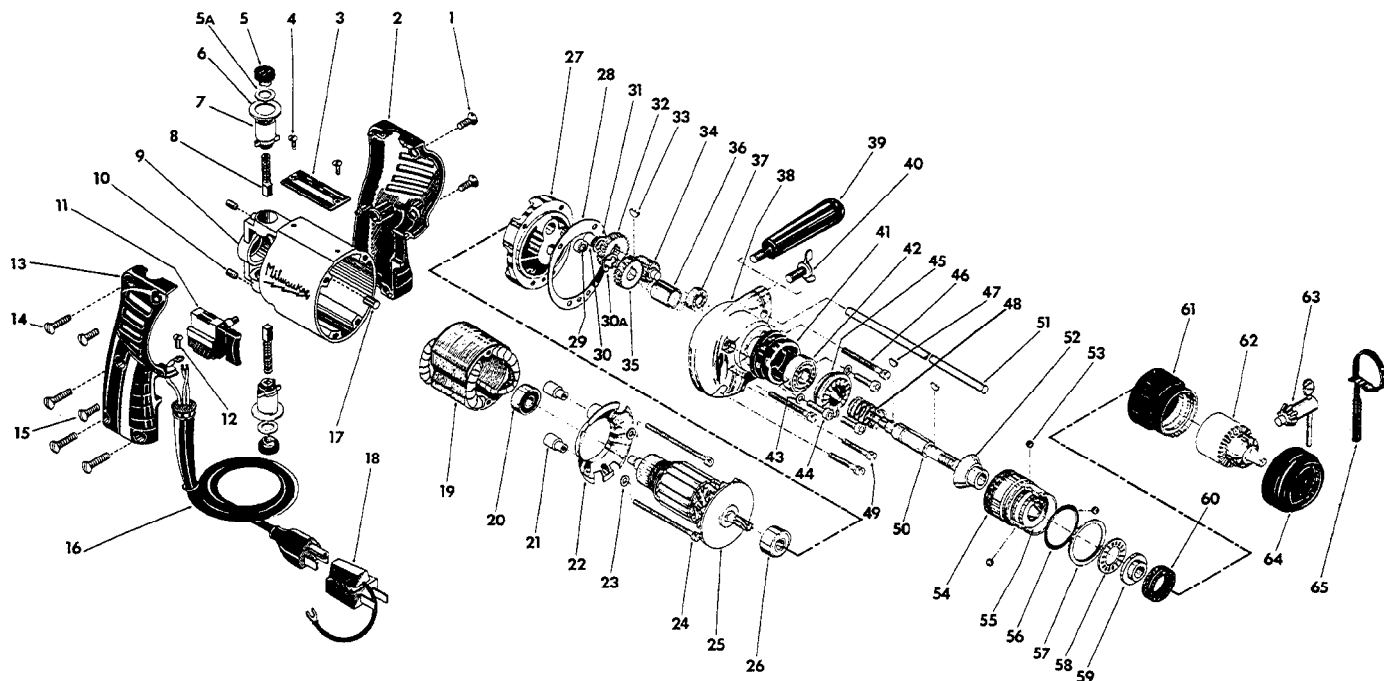


FIG.	PART NO.	DESCRIPTION OF PART	NO. REQ.	FIG.	PART NO.	DESCRIPTION OF PART	NO. REQ.
1	06-81-3600	8-32x3/8 Oval Hd. Handle Mtg. Scrs.	(2)	33	06-42-0400	Woodruff Key	(1)
2	31-44-0111	L.H. Handle Half	(1)	34	36-66-4091	Int. Pinion Shaft	(1)
3	12-98-0600	Nameplate	(1)	35	32-75-2711	Spindle Gear	(1)
4	06-81-4300	3-48x3/16 Rd. Hd. Nameplate Scrs.	(2)	36	45-36-0611	Spindle Spacer	(1)
5	23-44-0060	Brush Retaining Cap	(2)	37	02-04-0640	Int. Shaft Ball Bearing	(1)
5a	23-86-0050	Brush Retaining Cap Washer	(2)	38	28-14-1321	Gear Case Assembly	(1)
6	23-86-0070	Insulating Washer	(2)	39	43-62-0470	Side Handle	(1)
7	22-22-0271	Brush Holder Assy.	(2)	40	06-88-0100	(1/4-20) Wing Screw	(1)
8	22-18-0410	Carbon Brush Assy.	(2)	41	31-86-0111	Spacer	(1)
9	28-50-6091	Motor Housing Assy. (Incl. Item 17)	(1)	42	02-08-0510	Spindle Ball Bearing	(1)
10	06-83-2450	10-32x3/8 Soc. Hd. Set Scr.	(2)	43	06-97-3200	No. 8 Split Ring Lock Washer	(3)
11	23-66-0510	Switch	(1)	44	06-75-2060	8-32x5/8 Soc. Hd. Spacer Mtg. Scr.	(3)
12	06-81-8625	6-32x1/4 Brass Rd. Hd. Ground Scr.	(1)	45	44-84-0071	Fixed Ratchet	(1)
13	31-44-0100	R.H. Handle Half	(1)	46	06-81-6650	8-32x1-3/4 Fil. Hd. Sem	(2)
14	06-81-3650	8-32x3/4 Oval Hd. Handle Mtg. Scrs.	(4)	47	06-42-0800	Woodruff Key	(2)
15	06-81-3600	8-32x3/8 Oval Hd. Handle Mtg. Scrs.	(2)	48	40-50-7680	Ratchet Spring	(1)
16	22-64-0450	Cord Set	(1)	49	06-81-6400	8-32x1-1/8 Fil. Hd. Sem	(2)
17	45-30-0120	Ball Bearing Ret. Slug	(1)	50	38-50-5015	Spindle Assy. (Incl. Item 52)	(1)
18	48-03-0010	Attachment Plug Adaptor	(1)	51	44-94-0161	Depth Rod	(1)
19	18-22-1160	Field Assembly	(1)	52	--	Rotating Ratchet (See Item 50)	(1)
20	02-04-0740	Ball Bearing	(1)	53	02-02-0180	3/16 Steel Ball	(3)
21	45-36-0601	Baffle Spacer	(2)	54	45-22-0281	Sleeve	(1)
22	31-05-0010	Baffle	(1)	55	45-36-0591	Shift Spacer	(1)
23	45-88-7170	Washer	(2)	56	34-40-1500	"O" Ring	(1)
24	06-81-6010	6-32x2-5/8 Fil. Hd. Sem Field Scrs.	(2)	57	34-60-2125	Retaining Ring	(1)
25	16-22-1290	Armature Assembly	(1)	58	02-80-1200	Needle Thrust Bearing	(1)
26	02-04-0880	Ball Bearing	(1)	59	45-36-0621	Thrust Spacer	(1)
27	28-28-1441	Diaphragm	(1)	60	45-06-0160	Felt Seal	(1)
28	43-44-0280	Gasket	(1)	61	42-76-0181	Shift Collar	(1)
29	02-50-1610	Spindle Shaft Needle Bearing	(1)	62	48-66-0810	Chuck	(1)
30	02-50-1210	Int. Shaft Needle Bearing	(1)	63	48-66-3240	Chuck Key	(1)
30a	34-60-0800	"E" Ring	(1)	64	49-62-0090	Dust Shield	(1)
31	45-88-7160	Thrust Washer	(1)	65	48-66-4040	Key Holder	(1)
32	32-40-1041	Intermediate Gear	(1)				