



SERVICE PARTS LIST

BULLETIN NO.
55-24-1325

SPECIFY CATALOG NO. AND SERIAL NO. WHEN ORDERING PARTS		REVISED BULLETIN	DATE
D.I. "D" HANDLE HAMMER DRILL		55-24-1324	Nov. '96
CATALOG NO.	5389-2	WIRING INSTRUCTION 58-01-0200	
STARTING SERIAL NO.	609B		

EXAMPLE:
Component Parts (Small #) Are Included
When Ordering The Assembly (Large #).

00 0

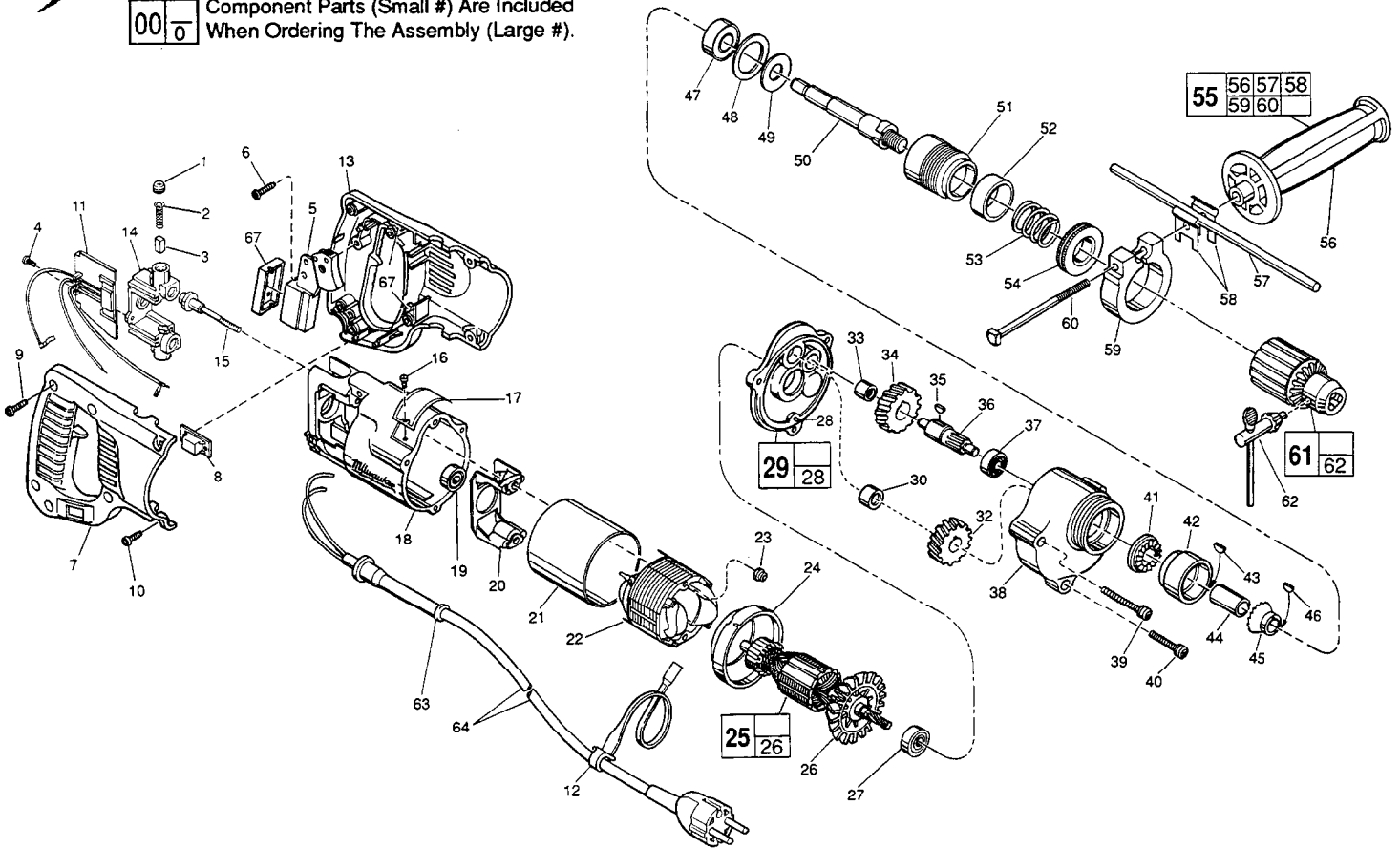


FIG.	PART NO.	DESCRIPTION OF PART	NO.	REQ.	FIG.	PART NO.	DESCRIPTION OF PART	NO.	REQ.
1	23-44-0190	Brush Retaining Screw	(2)		★ 40	06-82-5432	8-32 x 1-5/8" Pan Hd. Slit. Taptite T-20	(1)	
2	23-52-0160	Brush Spring	(2)		41	44-84-0100	Fixed Ratchet	(1)	
3	22-16-0375	Carbon Brush	(2)		42	42-52-0250	Bearing Housing	(1)	
4	06-95-0075	6-32 x 3/8" Truss Hd. Taptite Screw	(2)		★ 43	06-42-2000	Woodruff Key	(1)	
5	23-66-1975	Switch	(1)		44	45-36-0890	Spacer	(1)	
6	06-82-7270	8-16 x 5/8" Pan Hd. Slit. Plast. T-20	(1)		45	44-84-0110	Rotating Ratchet	(1)	
★ 7	31-44-1651	R.H. Half "D" Handle	(1)		46	06-42-0800	Woodruff Key	(1)	
8	31-53-0120	Plug	(1)		47	02-04-1536	Ball Bearing	(1)	
9	06-82-7270	8-16 x 5/8" Pan Hd. Slit. Plast. T-20	(5)		48	45-88-7350	Bearing Retaining Washer	(1)	
10	06-82-5316	8-32 x 1/2" Taptite T-20	(4)		49	45-88-7365	Spring Support Washer	(1)	
11	14-20-0435	Remote Electronic Assembly	(1)		★ 50	38-50-5151	Spindle	(1)	
12	48-66-4040	Key Holder	(1)		51	45-22-0405	Sleeve	(1)	
★ 13	14-34-0423	L.H. Half "D" Handle Assembly	(1)		52	45-88-7375	Felt Washer	(1)	
14	22-22-1380	Brush Holder Assembly	(1)		53	40-50-4950	Spring	(1)	
★ 15	06-81-1058	Insulated Field Bolt	(2)		54	42-76-0200	Locking Collar	(1)	
★ 16	06-72-1720	Service Rivet	(2)		55	14-34-0250	Side Handle Assembly	(1)	
★ 17	12-99-0065	Service Nameplate	(1)		56	43-62-0865	Side Handle	(1)	
★ 18	28-50-6220	Motor Housing	(1)		57	44-94-0161	Depth Gauge Rod	(1)	
19	02-04-0845	Ball Bearing	(1)		58	42-68-0390	Clamp	(2)	
20	31-55-0030	Coil Shield	(1)		★ 59	25-82-0140	Handle Ring	(1)	
21	23-16-0456	Field Insulator	(1)		★ 60	42-32-0161	Bolt	(1)	
22	18-36-0100	240 Volt Field	(1)		★ 61	48-66-1360	1/2" Chuck	(1)	
23	06-57-2975	8-32 Flexlock Hex Nut	(2)		62	48-66-3280	Chuck Key	(1)	
24	31-05-0050	Baffle	(1)		63	44-76-0210	Cord Protector	(1)	
★ 25	16-36-0226	240 Volt Armature	(1)		64	22-64-4480	Cord Set	(1)	
26	22-84-0531	Fan Assembly	(1)		65	14-46-1001	Foam Slug Kit - (10 Slugs)	(2)	
27	02-04-0911	Ball Bearing	(1)		67	45-12-0470	Dust Shield	(1)	
28	06-65-0825	Groove Pin	(1)						
29	28-28-0601	Diaphragm	(1)						
30	02-50-2110	Needle Bearing	(1)						
★ 32	32-75-2002	Spindle Gear	(1)						
33	02-50-1640	Needle Bearing	(1)						
★ 34	32-40-1251	Intermediate Gear	(1)						
35	06-42-0800	Woodruff Key	(1)						
★ 36	36-66-2711	Intermediate Shaft	(1)						
★ 37	02-04-0725	Ball Bearing	(1)						
★ 38	28-14-1916	Gear Case	(1)						
★ 39	06-82-5532	8-32 x 2-1/2" Pan Hd. Slit. Taptite T-20	(2)						

FIG. LUBRICATION
38 3-1/4 Oz. Type "E" Grease, No. 49-08-4122.
45 Place a dab of "U" Grease, No. 49-08-0150, on the face of the rotating ratchet. Face of the ratchet should have a .10" to .20" layer.

MILWAUKEE ELECTRIC TOOL CORPORATION
13135 W. LISBON RD., BROOKFIELD, WI 53005