



SERVICE PARTS LIST

SPECIFY CATALOG NO. AND SERIAL NO. WHEN ORDERING PARTS		REVISED BULLETIN	DATE
3/4" ROTARY HAMMER			Mar. 2008
CATALOG NO.	5383-21	SERIAL NUMBER	183A
		WIRING INSTRUCTION 58-01-1190	

EXAMPLE:

00	0
----	---

 Component Parts (Small #) Are Included
 When Ordering The Assembly (Large #).

FIG.	PART NO.	DESCRIPTION OF PART	NO. REQ.
4	22-64-0083	Cord	1
5	44-76-0083	Cord Protector	1
6	10-07-5383	Warning Label	1
100	31-44-0183	Handle Set	1
104	44-52-0283	Cushion Grip	1
105	18-07-0135	Field	1
107	22-84-0065	Fan	1
108	02-04-0055	Bearing	1
109	44-90-0340	External Snap Ring	1
117	23-94-1083	Leadwire Assembly	2
119	05-78-0783	Screw	5
120	05-78-0784	Screw	1
125	31-17-0183	Cord Clamp	1

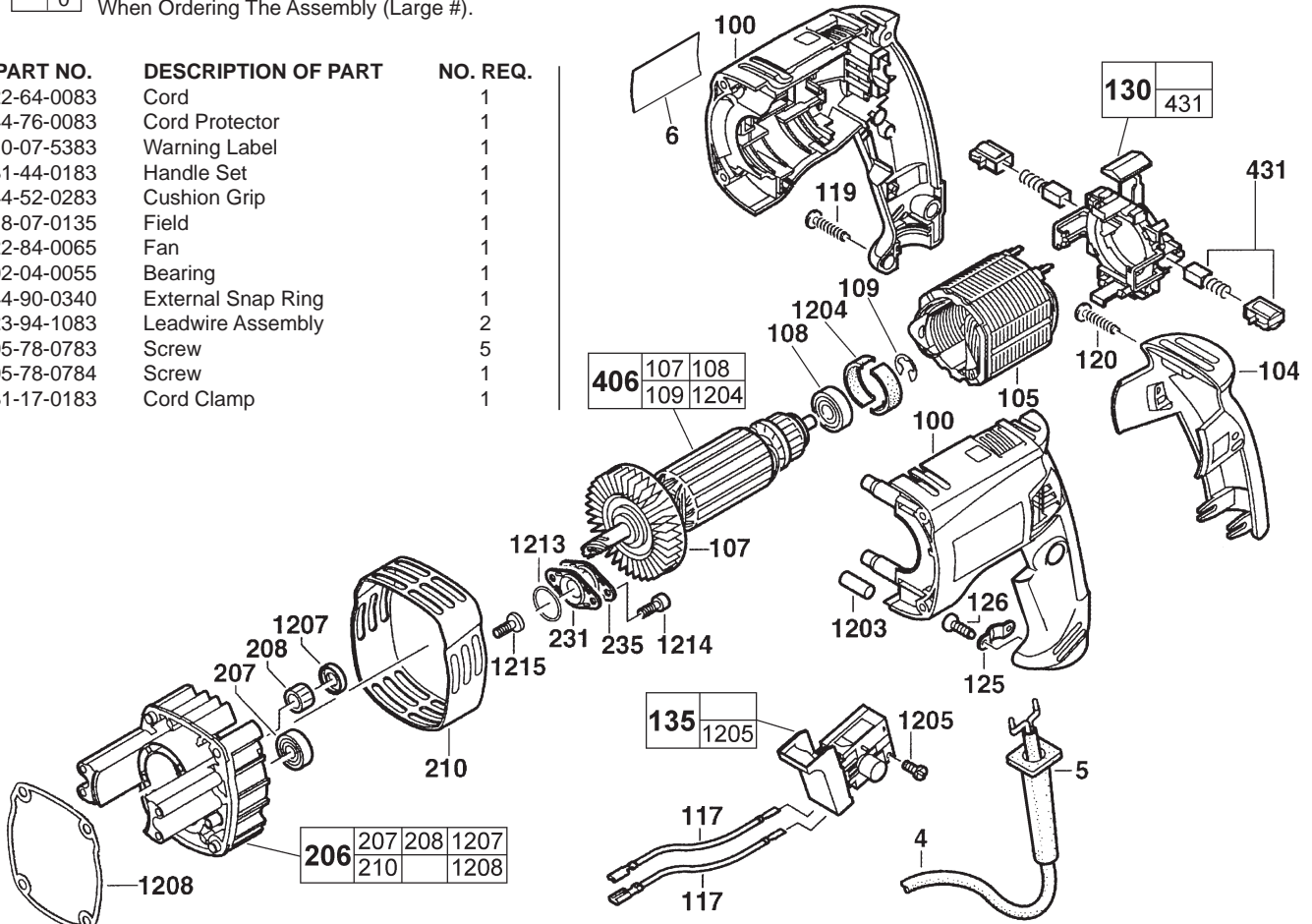


FIG.	PART NO.	DESCRIPTION OF PART	NO. REQ.
126	05-81-0930	Screw	2
130	22-22-0283	Brush Card	1
135	23-66-0583	Switch	1
206	28-28-0383	Diaphragm Assembly	1
207	02-04-0056	Ball Bearing	1
208	02-50-2185	Needle Bearing	1
210	31-44-0483	Diaphragm Cover	1
231	42-92-0783	Bearing Cover	1
235	42-92-0784	Bearing Cover	1
406	16-07-0183	Armature	1
431	22-18-0683	Carbon Brush (2) Set	1
600	43-46-0172	Depth Rod (Not Shown)	1
701	49-15-5300	Side Handle (Not Shown)	1
1203	45-30-0195	Retaining Slug	1
1204	42-92-0283	Bearing Cup	2
1205	05-81-0932	Screw	2
1207	44-90-0483	Seal Ring	1
1208	43-44-0183	Gasket	1
1213	34-40-1183	O-Ring	1
1214	05-74-0715	Screw	2
1215	05-74-0483	Screw	1

**SEE BACK PAGE OF THIS BULLETIN
 FOR ADDITIONAL SERVICE NOTES**

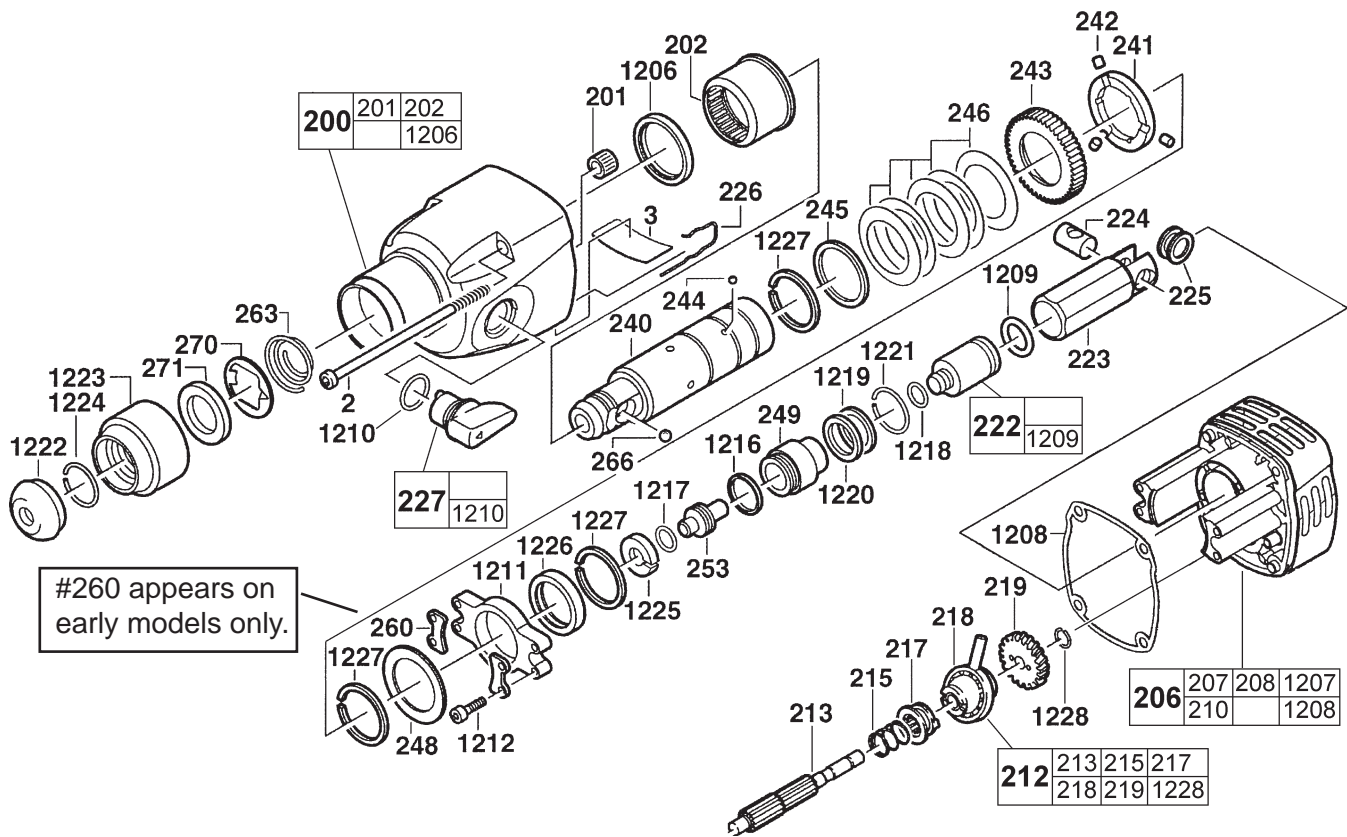


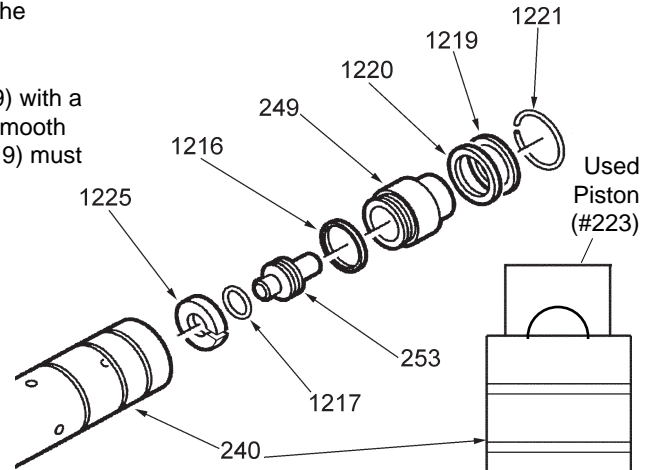
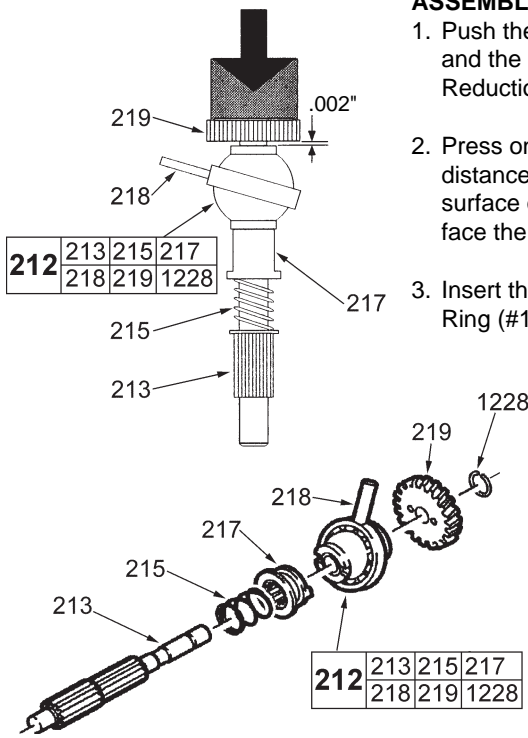
FIG.	PART NO.	DESCRIPTION OF PART	NO. REQ.
2	05-74-0710	Screw	4
3	12-20-0274	Service Nameplate Kit	1
200	31-40-0183	Gearcase	1
201	02-50-2183	Needle Bearing	1
202	02-50-2184	Needle Bearing	1
206	28-28-0383	Diaphragm Assembly	1
212	14-73-0283	Wobble Assembly	1
213	36-66-0183	Reduction Gear Shaft	1
215	40-50-0883	Spring	1
217	45-22-0483	Sleeve	1
218	36-92-0583	Wobble Plate	1
219	32-60-0783	Reduction Gear	1
222	44-82-0183	Ram	1
223	44-62-0083	Piston	1
224	44-60-0483	Wrist Pin	1
225	45-88-0283	Washer	2
226	42-70-0383	Retaining Clip	1
227	44-10-0483	Shift Lever Assembly	1
240	38-50-1183	Spindle	1
241	42-70-0384	Clutch Disc	1
242	44-96-0183	Clutch Roller	3
243	32-75-1283	Spindle Gear	1
244	02-04-0683	Ball	3
245	45-88-1275	Washer	1
★ 246	40-50-0983	Belleville Spring (Five Required)	5
248	45-88-1255	Washer	1
249	44-82-0184	Ram Catcher	1
253	45-56-2583	Striker	1
★ 260	44-66-0383	Retaining Plate (Optional)	2
263	40-50-8045	Spring	1
266	02-02-0275	Ball	1
270	42-36-1755	Support Plate	1
271	44-90-4285	Holding Ring	1
1206	44-90-0383	Seal Ring	1
1208	43-44-0183	Gasket	1
1209	44-90-0583	O-Ring	1
1210	34-40-0283	O-Ring	1

FIG.	PART NO.	DESCRIPTION OF PART	NO. REQ.
1211	44-66-0683	Spindle Guide Plate	1
1212	05-74-0183	Screw	4
1216	34-40-0083	O-Ring	1
1217	34-40-0183	O-Ring	1
1218	34-40-4451	O-Ring	1
1219	45-88-1230	Washer	1
1220	34-40-0140	O-Ring	1
1221	44-90-0183	Internal Snap Ring	1
1222	42-52-0065	Dust Cap	1
1223	42-76-0283	Collar	1
1224	44-90-0375	External Snap Ring	1
1225	45-88-0783	Stop Washer	1
1226	44-90-0347	Damping Ring	1
1227	44-90-0350	External Snap Ring	3
1228	44-90-0683	External Snap Ring	1

**SEE BACK PAGE OF THIS BULLETIN
FOR ADDITIONAL SERVICE NOTES**

ASSEMBLING THE WOBBLE ASSEMBLY

1. Push the Spring (#215) the Sleeve (#217) and the Wobble Plate (#218) over the Reduction Gear Shaft (#213).
2. Press on the Reduction Gear (#219) with a distance of .002", as shown. The smooth surface of the Reduction Gear (#219) must face the Wobble Plate (#218).
3. Insert the External Snap Ring (#1228).

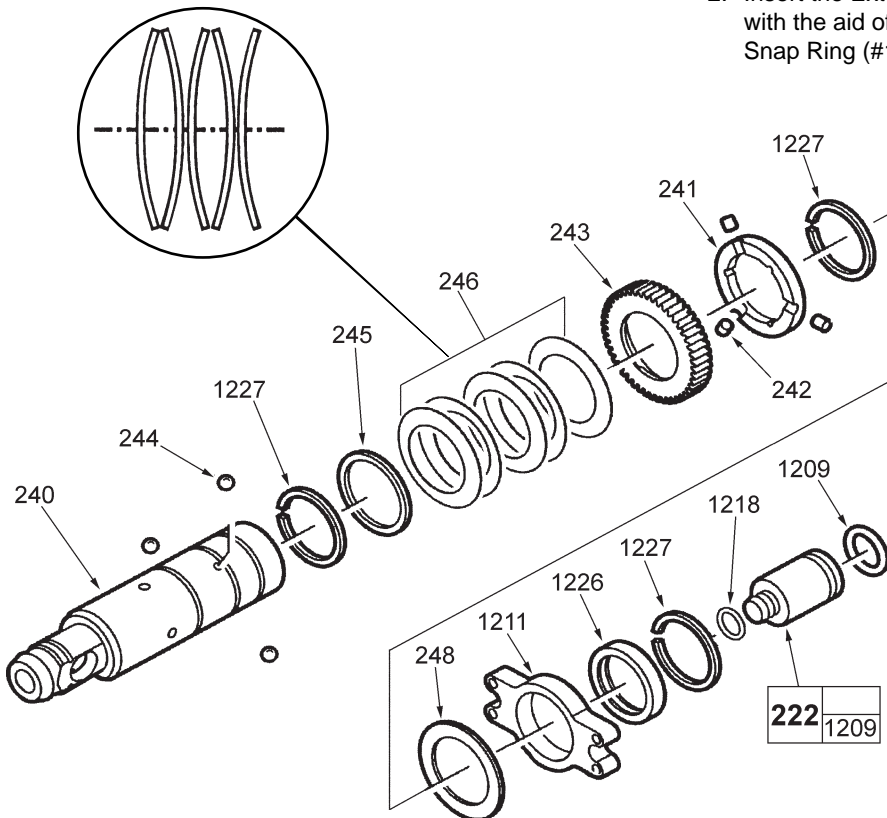


SPINDLE ASSEMBLY (Inner Parts)

1. Insert the following parts into the Spindle (#240):

Stop Washer	(#1225)
O-Ring	(#1217)
Striker	(#253)
O-Ring	(#1216)
Ram Catcher	(#249)
O-Ring	(#1220)
Washer	(#1219)

2. Insert the External Snap Ring (#1221) into the Spindle (#240) with the aid of a used piston (#223), as shown, until the External Snap Ring (#1219) engages.



SPINDLE ASSEMBLY (Outer Parts)

1. Assemble the following parts to the Spindle (#240):

External Snap Ring	(#1227)
Damping Ring	(#1226)
Spindle Guide Plate	(#1211)
<i>(With smooth side facing the Spindle)</i>	
Washer	(#248)
External Snap Ring	(#1227)

2. Assemble the clutch to the Spindle (#240):

Clutch Disc	(#241)
Clutch Rollers	(#242)
Spindle Gear	(#243)
Belleville Springs	(#246)
Washer	(#245)
<i>(Use a press to compress the belleville springs in order to assemble #1227).</i>	
External Snap Ring	(#1227)

3. With O-Rings (#1209 and #1218), insert the Ram (#222) into the Spindle (#240).

SCREW TORQUE SPECIFICATIONS:

Housing screws		
in plastic:	#119, #120 & #126	13.2 In/lbs. (1.5 Nm)
Screws in metal:	#1212, #1214 & #1215	22.1 In/lbs. (2.5 Nm)
Gearcase screws:	#2	17.7 In/lbs. (2.0 Nm)